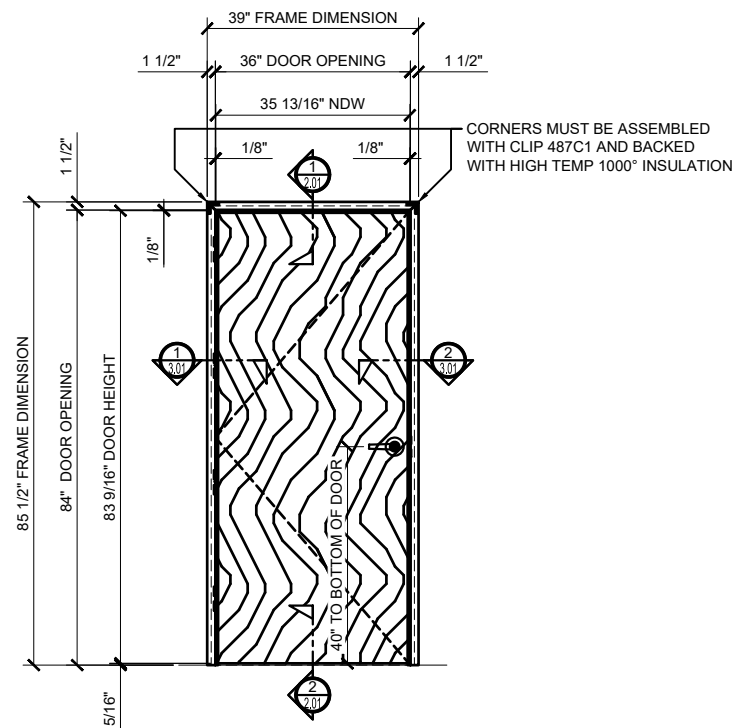


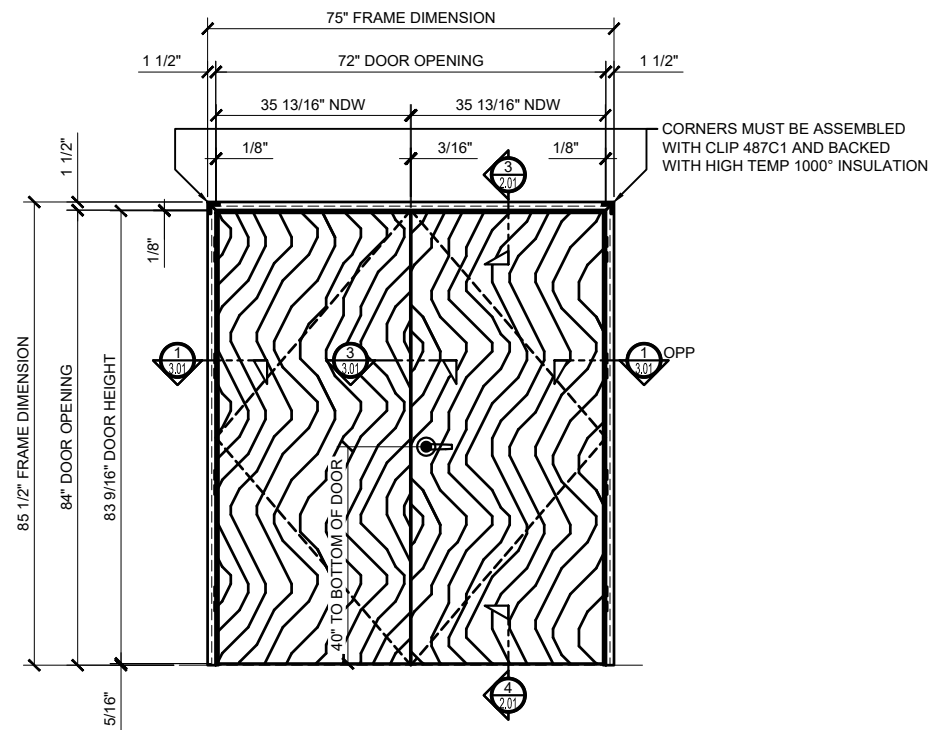


**SERIES 487 OFFICE PARTITION SYSTEM - FIRE RATED 20 MINUTES
SINGLE AND DOUBLE BUTT HINGE HUNG DOORS**



**① SINGLE BUTT HINGE HUNG DOOR
20 MINUTE FIRE RATED**

ARCH REF: NONE 3/4"=1'-0"



**② DOUBLE BUTT HINGE HUNG DOOR
20 MINUTE FIRE RATED**

ARCH REF: NONE 3/4"=1'-0"

- TESTING STANDARDS
NFA 252 (2012)
UL 1784 (2015)
UL 10 (c) (2015)
- SYSTEM DESIGNED TO WRAP 4-7/8" (124 MM) WALLS
- 1-1/2" (38.1 MM) FACE TRIM
- CLIP JOINERY
- STANDARD FINISHES
CLEAR, BRONZE AND BLACK ANODIZED
- COMPLETE SINGLE AND DOUBLE DOOR KITS
- FIRE RATED FLUSH WOOD DOORS (BY CRL OR OTHERS)
- OPTIONAL DOOR HARDWARE:
 - PANIC DEVICES
 - LEVER LOCKS
 - MORTISE LEVER LOCKS
 - SURFACE MOUNTED DOOR CLOSERS
 - ELECTRIC STRIKES
- CUSTOM FINISHES UPON REQUEST

CRL - US ALUMINUM OFFICE PARTITION SYSTEM
DOOR FRAME SIZE LIMITATIONS
NON-RATED
- SINGLE DOOR; 48" (1.22M) X 96"
(2.44M)
- DOUBLE DOOR; 96" (2.44M) X 96" (2.44M)

HINGE NOTE:
• DOOR OPENING HEIGHTS < 7'-0" RECEIVE 3 HINGES / JAMB
• DOOR OPENING HEIGHTS > 7'-0" RECEIVE 4 HINGES / JAMB

STANDARD ABBREVIATIONS
RO = ROUGH OPENING
FD = FRAME DIMENSION
DLO = DAYLITE OPENING
DO = DOOR OPENING
NDW = NET DOOR WIDTH

HARDWARE, FASTENERS, AND SEALS		
PART NUMBER	DESCRIPTION	SUPPLIED BY
BP502	BACK PLATE TO HINGE	INCLUDED WITH FRAME BY CRL
BP501B (SINGLE DOOR)	STRIKE BACKUP PLATE, CRL OFFICE PARTITION	INCLUDED WITH FRAME BY CRL
487C1	ANGLE CLIP .4 x 2 x 2	INCLUDED WITH FRAME BY CRL
NP600	FIRE DOOR GASKET 60 DURO FLAME	INCLUDED WITH FRAME BY CRL
BB10 (OR SIMILAR)	SATIN STAINLES STEEL 4.5 x 4.5 COMMERCIAL BEARING HINGES	BY CRL OR BY OTHERS
D50ENT	HEAVY-DUTY GRADE 1 LEVER LOCK SET (FUNCTION OPTIONAL)	BY CRL OR BY OTHERS
PLK1ASA	STRIKE, BRUSHED STAINLESS STEEL (INCLUDE SCW HARDWARE)	BY CRL OR BY OTHERS
94232D (FOR DOUBLE DOORS)	FLUSH BOLT	BY CRL OR BY OTHERS
	1 x 8 1/2, BRUSHED STAINLESS STEEL FACE PLATE	BY CRL OR BY OTHERS
	1 x 2 1/4, BRUSHED STAINLESS STEEL FRAME / SILL STRIKE	BY CRL OR BY OTHERS
355_S (FOR DOUBLE DOORS)	1 x 2 1/4, BRUSHED STAINLESS STEEL ACTIVE DOOR STRIKE	BY CRL OR BY OTHERS
	"T" ASTRAGAL W/ SILICONE BULB SEAL	BY CRL OR BY OTHERS
HSS2000	BLACK HOT SMOKE SEAL 3/64 x 7/16 x 24' FLEXIBLE INTUMESCENT STRIP	BY CRL OR BY OTHERS
	HI-TEMPERATURE SILICONE (UP TO 500°)	CUSTOMER SUPPLIED
	VERY HIGH-TEMP MINERAL WOOL INSULATION (UP TO 1000°F)	CUSTOMER SUPPLIED

Revisions By:

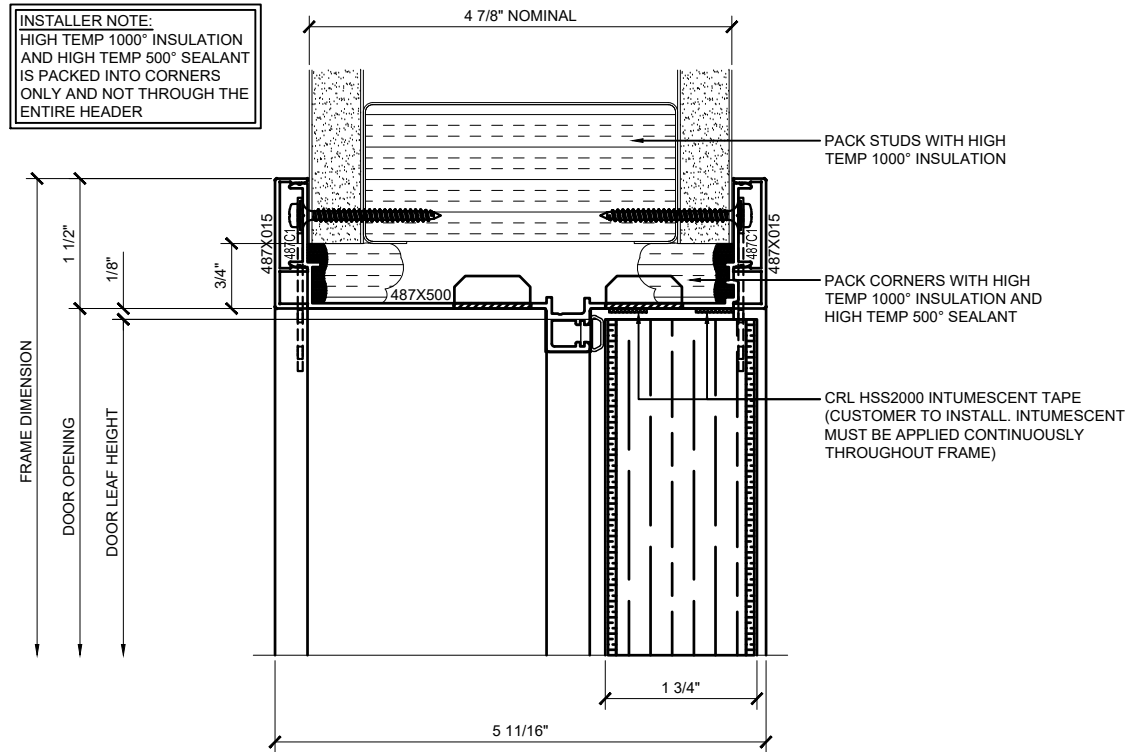


2503 E. Vernon Avenue, Los Angeles, CA 90058-1897
PH (800)-421-6144 FX: 800-587-7501 www.crlusa.com

Description:
CRL 487-1.5
OFFICE PARTITION SYSTEM
20 MINUTE FIRE RATED

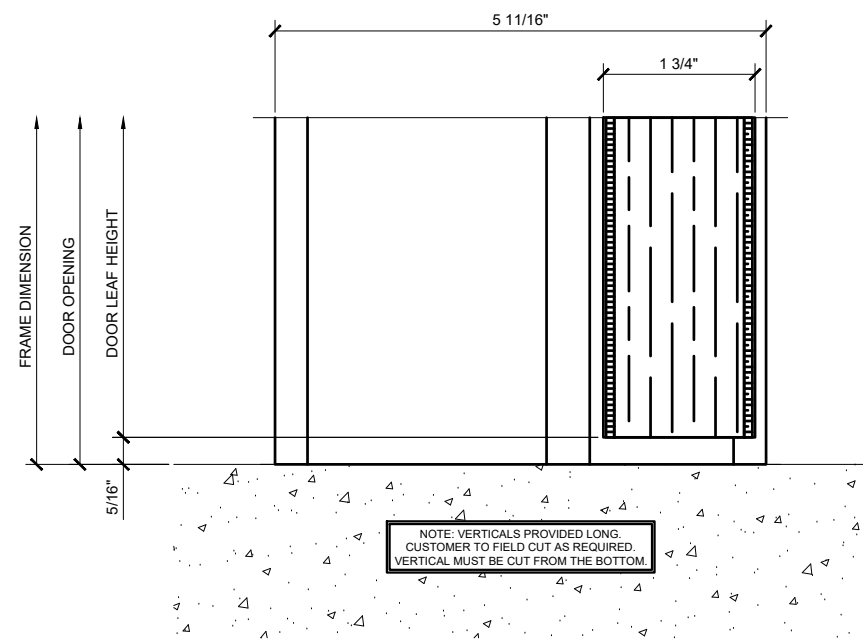
Drawn By: AAD
Date: 6/14/17
Scale: AS NOTED
File Name: CRL 487-1.5 Office Partition System 20 MIN.dwg

Sheet



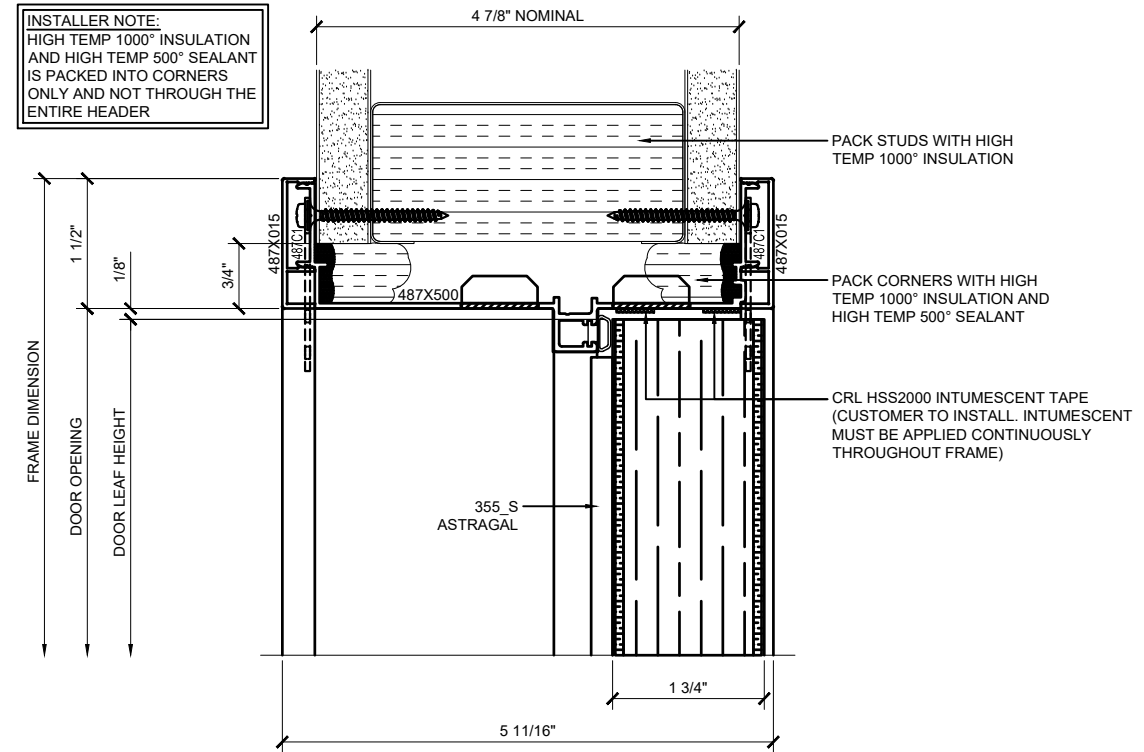
① SERIES 487 20 MIN OPS DOOR HEAD DETAIL

ARCH REF: 1'-0"=1'-0"



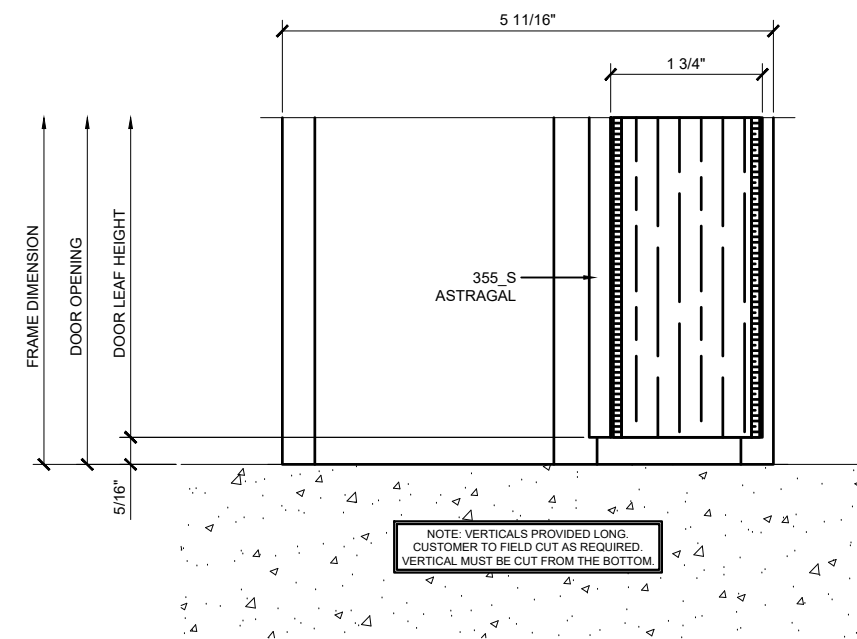
② SERIES 487 20 MIN OPS STD DOOR @ BOTTOM

ARCH REF: 1'-0"=1'-0"



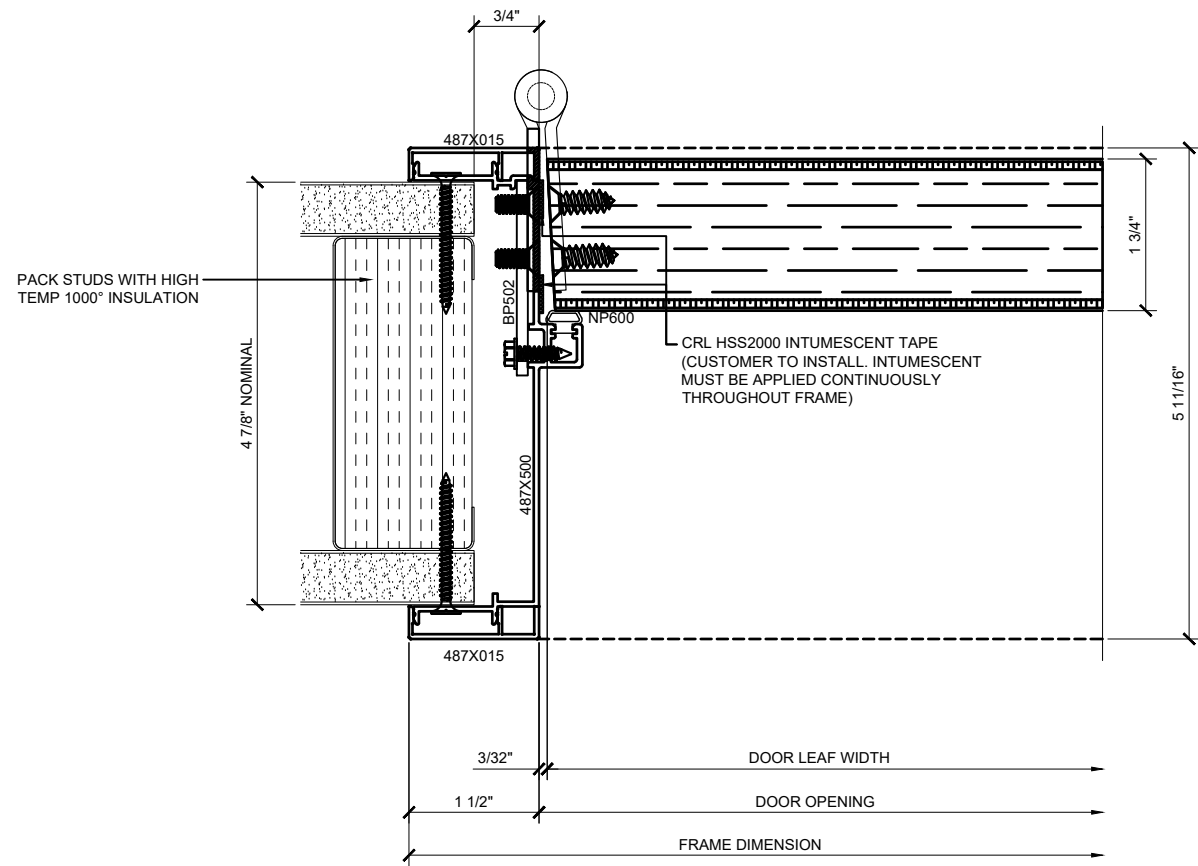
③ SERIES 487 20 MIN OPS DOOR HEAD DETAIL W/ ASTRAGAL

ARCH REF: 1'-0"=1'-0"



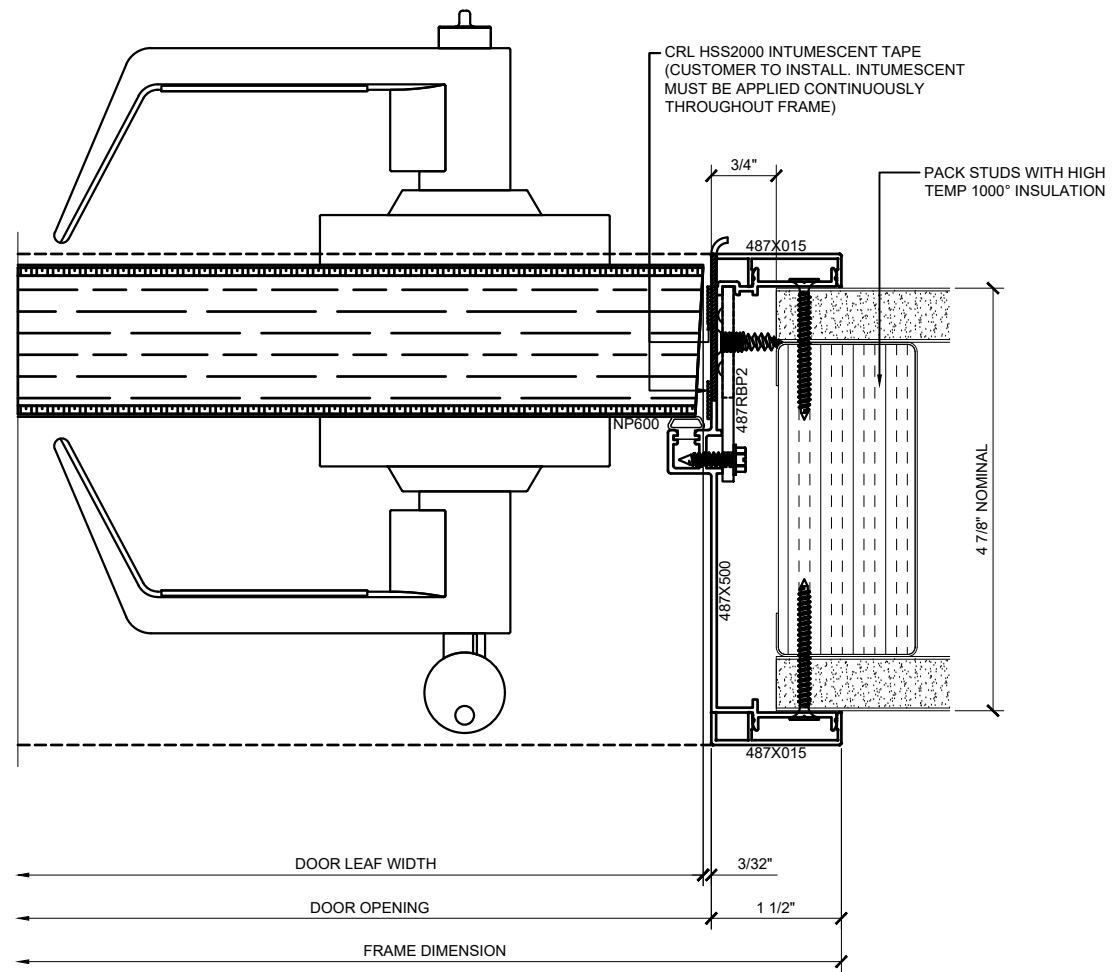
④ SERIES 487 20 MIN OPS STD DOOR @ BOTTOM W/ ASTRAGAL

ARCH REF: 1'-0"=1'-0"



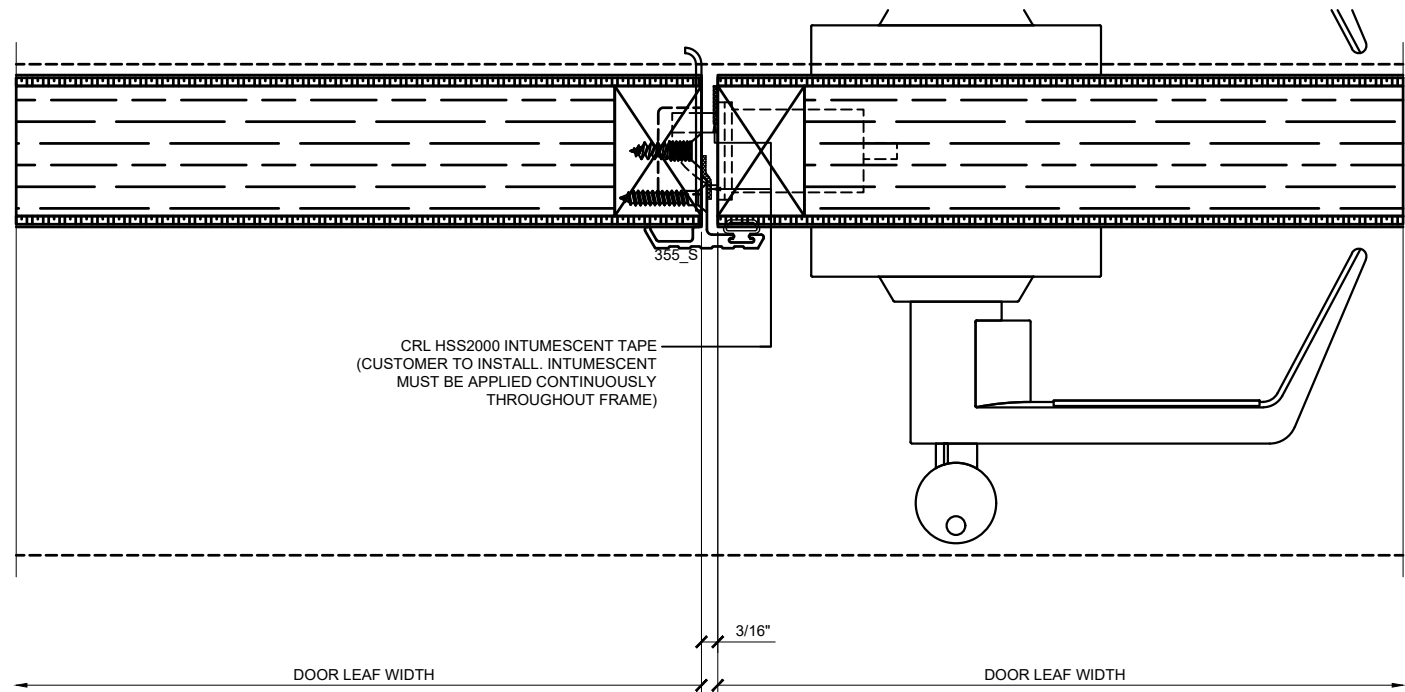
① SERIES 487 20 MIN OPS DOOR JAMB DETAIL AT HINGE SIDE

ARCH REF: 1'-0"=1'-0"



② SERIES 487 20 MIN OPS DOOR JAMB DETAIL AT STRIKE SIDE

ARCH REF: 1'-0"=1'-0"



③ SERIES 487 20 MIN OPS MEETING STILES DETAIL

ARCH REF: 1'-0"=1'-0"

Revisions By:

CRL

2503 E. Vernon Avenue, Los Angeles, CA 90058-1897
PH (800)-421-6144 FX: 800-587-7501 www.crlusa.com

Description:
CRL 487-1.5
OFFICE PARTITION SYSTEM
20 MINUTE FIRE RATED

Drawn By: AAD
Date: 6/14/17
Scale: AS NOTED
File Name: CRL 487-1.5 Office Partition System 20 MIN.dwg

Sheet

3.01