



CRL SRS STANDOFF RAILING SYSTEM

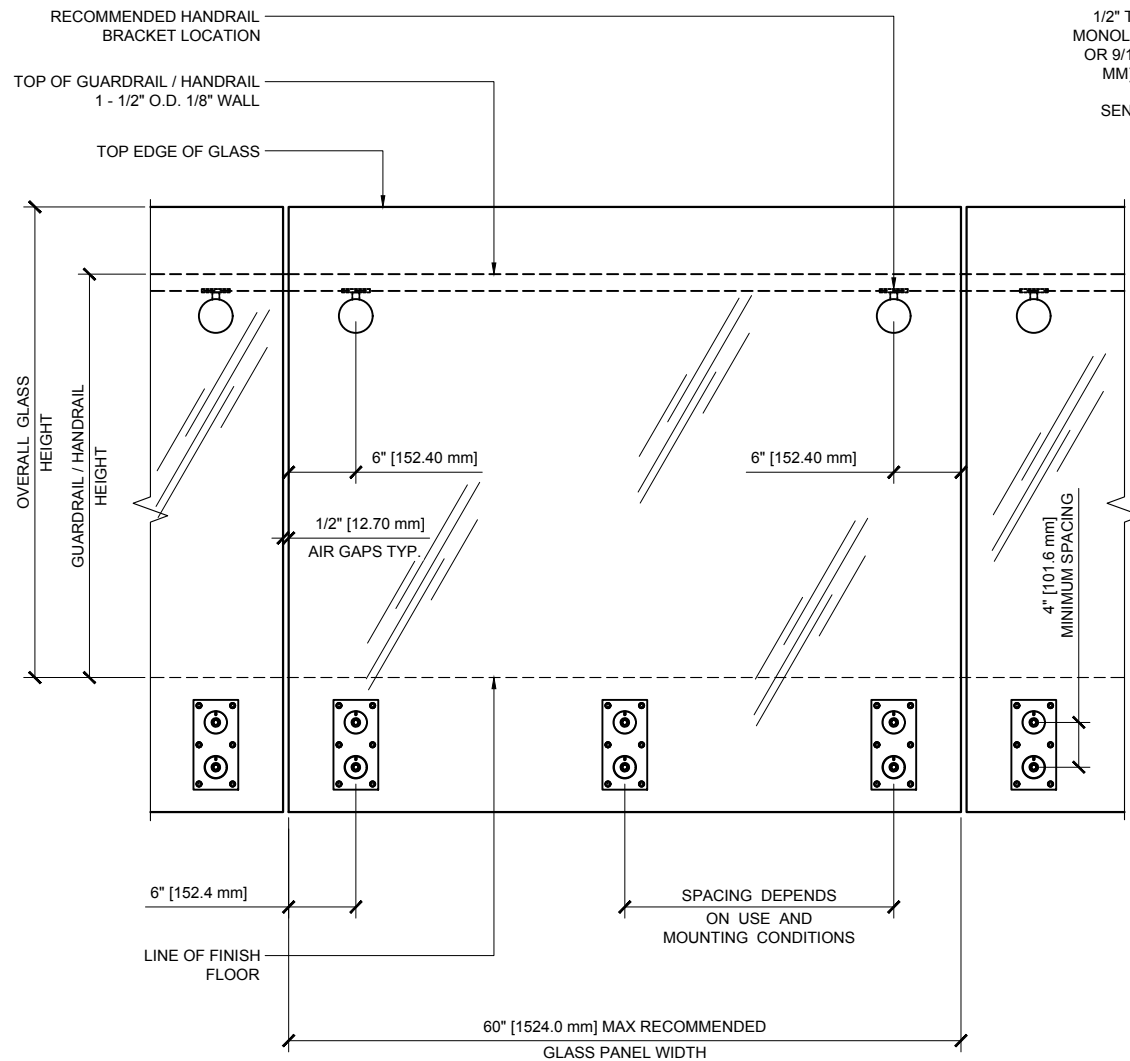
CRL GLASS RAIL STANDOFF FITTINGS RS0B20 w/ RECTANGULAR BACK PLATE

CRL'S GLASS RAIL STANDOFF FITTINGS CAN BE USED FOR MOUNTING GLASS PANELS UP TO 3/4" (19 MM) IN THICKNESS. THE 4" X 8" (102 X 203 MM) STAINLESS STEEL BACK PLATE GIVES THE INSTALLER MORE ADJUSTMENT AND SIX ANCHOR POINTS DURING THE INSTALLATION FOR THOSE TRICKY JOB SITE MOUNTING CONDITIONS. THIS BACK PLATE CAN BE FASTENED DIRECTLY TO STEEL, WOOD, OR CONCRETE SUBSTRATES AND SHIMMED AS REQUIRED WITH BLOCKING. THIS VERSATILE STANDOFF FITTING FEATURES TWO 2" (51 MM) DIAMETER CAPS WITH THREADED 3/8" - 16 THREADED STAINLESS STEEL RODS TO SECURE THE GLASS PANEL. THE 2" (51 MM) DIAMETER STANDOFFS ARE MECHANICALLY FASTENED TO A 3/8" (9.5 MM) THICK 316 GRADE STAINLESS STEEL BACK PLATE THAT IS PRE-DRILLED FOR MOUNTING. TWO POPULAR STAINLESS STEEL FINISHES ARE AVAILABLE - BRUSHED & POLISHED. CUSTOM STANDOFF DIAMETERS AND LENGTHS ARE ALSO AVAILABLE. ATTACHMENT ANCHORS FOR STEEL, WOOD, OR CONCRETE SUBSTRATES ARE SOLD SEPARATELY.

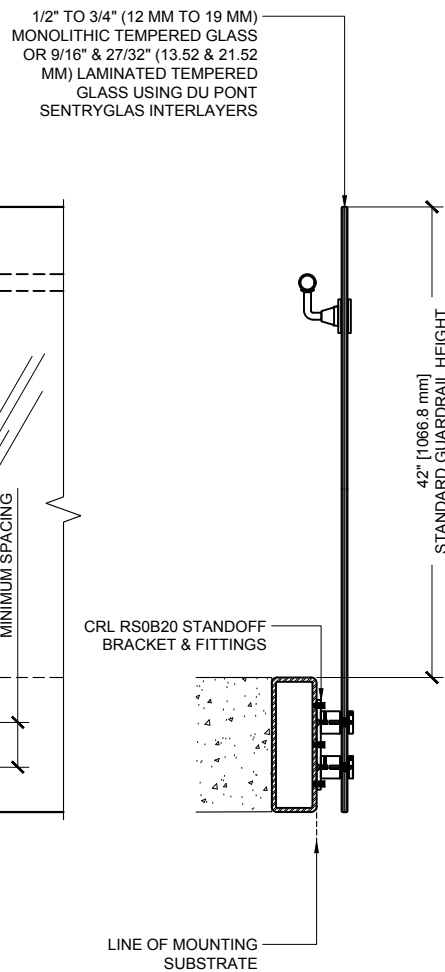
- * COMPACT DESIGN FOR MINIMAL OBSTRUCTION
- * COMPLETE WITH MOUNTING PLATE
- * FOR USE WITH 1/2" AND 3/4" (12 AND 19 mm) TEMPERED MONOLITHIC GLASS APPLICATIONS OR 9/16" & 27/32" (13.52 & 21.52 mm) LAMINATED GLASS USING DU PONT SENTRYGLAS INTERLAYERS
- * BRUSHED OR POLISHED 316 GRADE STAINLESS FINISHES AVAILABLE
- * DESIGNED FOR STEEL, WOOD, OR CONCRETE MOUNTING ATTACHMENT

Revisions By:

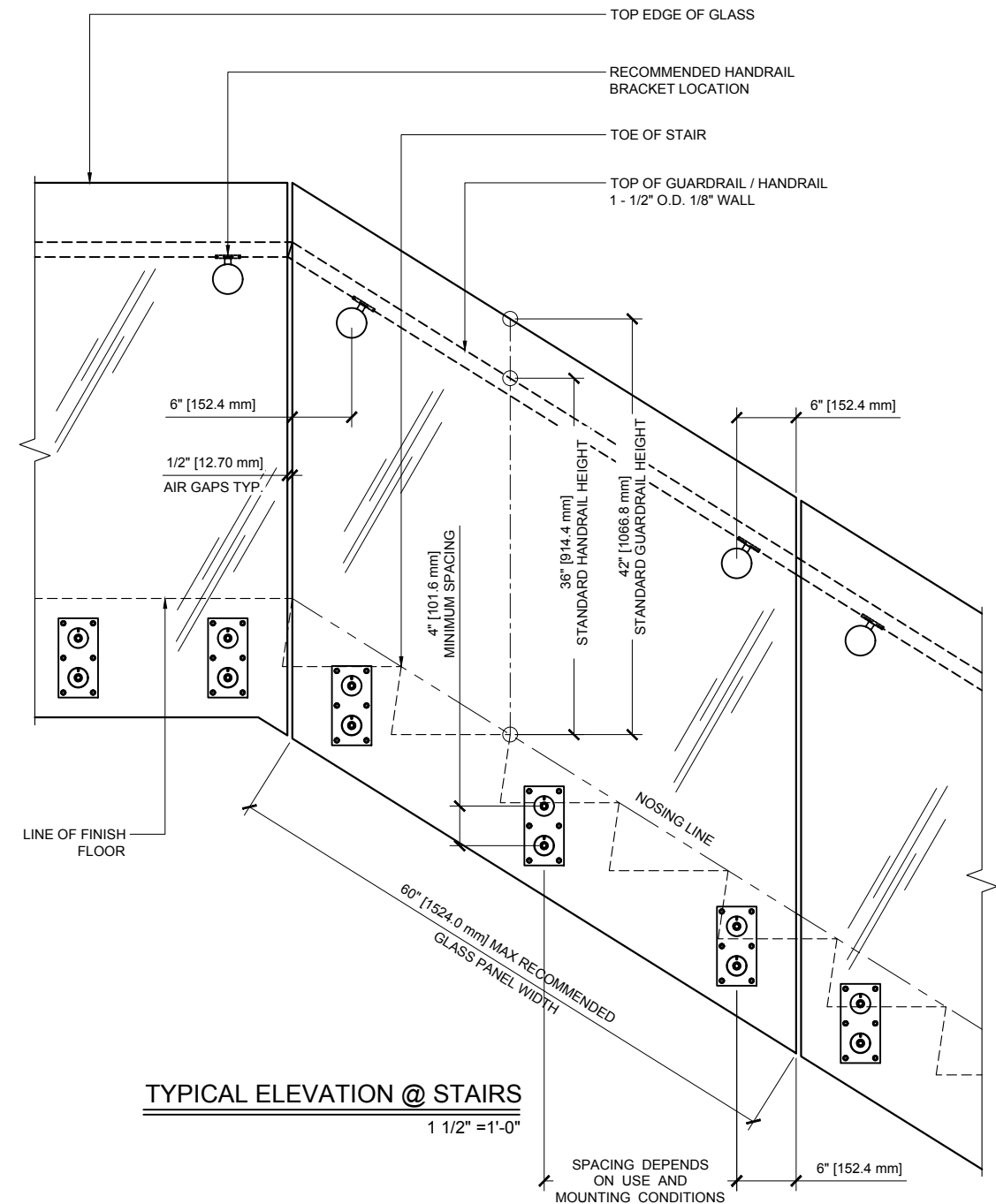
C.R. LAURENCE CO. ARCHITECTURAL PRODUCTS
2503 E. Vernon Avenue, Los Angeles, CA 90058-1897
PH (800)-421-6144 FX (800)-587-7501 www.crlaurence.com



TYPICAL STANDOFF GLASS RAIL ELEVATION
RS0B20 WITH RECTANGULAR BACK PLATE 1 1/2" = 1'-0"



TYPICAL SECTION
1 1/2" = 1'-0"



TYPICAL ELEVATION @ STAIRS
1 1/2" = 1'-0"

Description:
C. R. L.
SRS STANDOFF RAILING
SYSTEM DRAWINGS

Drawn By: RPD
Date: 11/10/16
Scale: AS NOTED
File Name: SRS.dwg

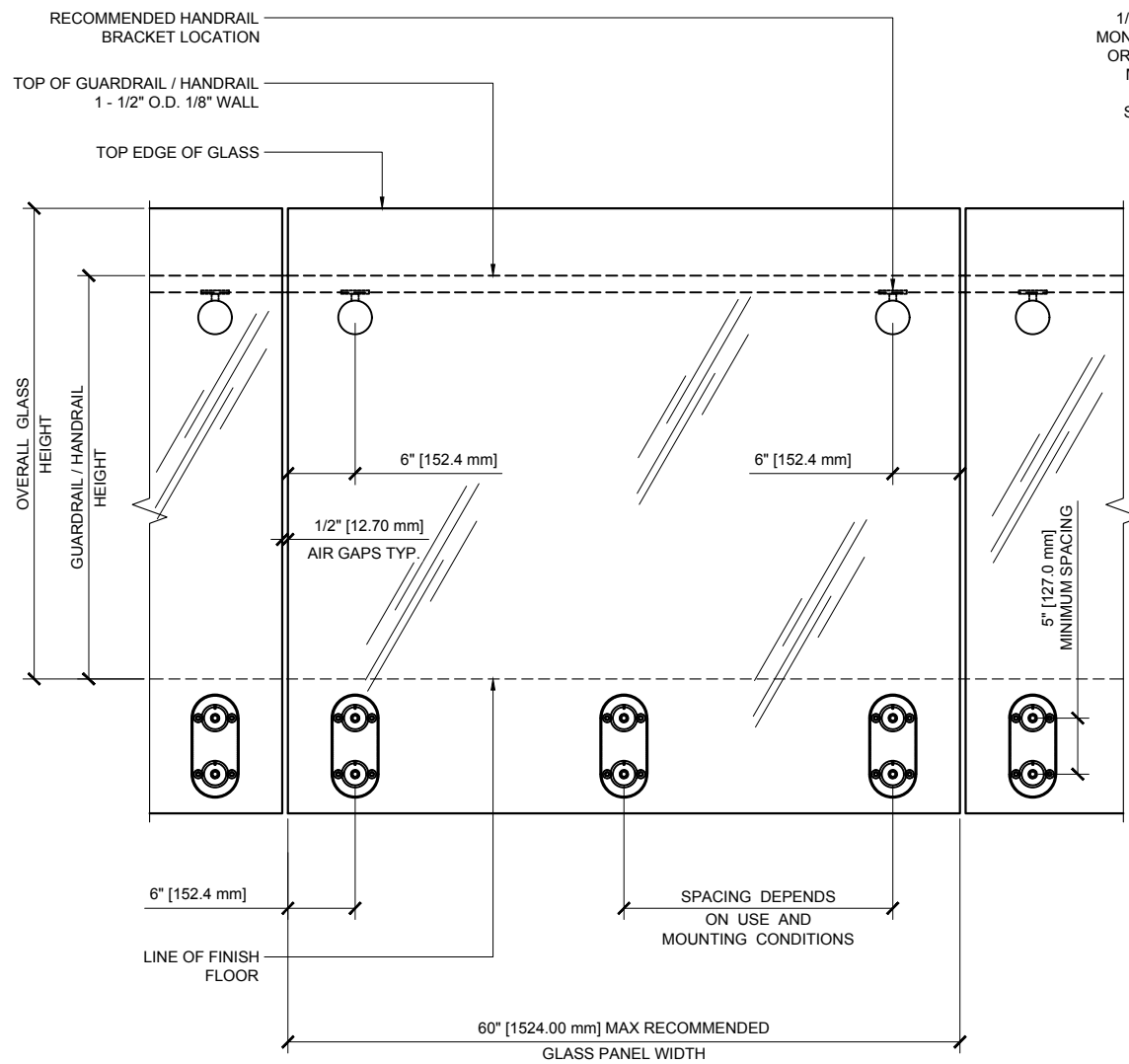


CRL SRS STANDOFF RAILING SYSTEM

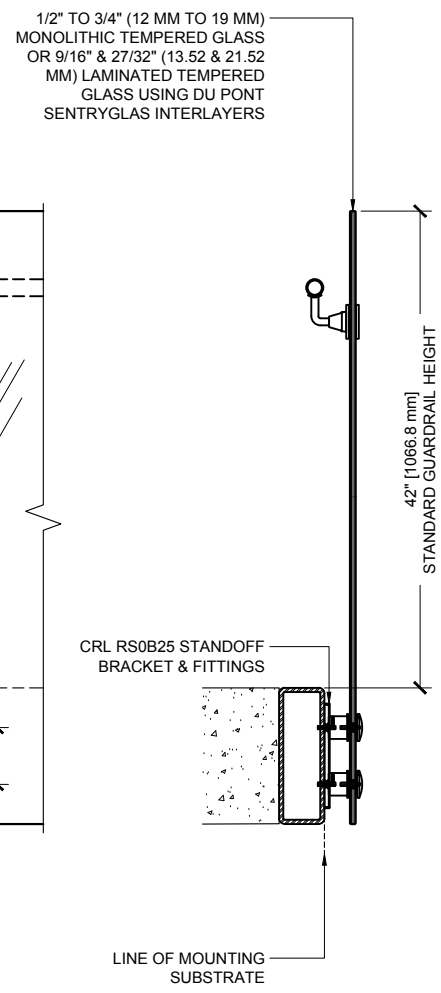
CRL GLASS RAIL STANDOFF FITTINGS RS0B25 w/ DOMED CAP & OVAL BACK PLATE

CRL'S GLASS RAIL STANDOFF FITTINGS CAN BE USED FOR MOUNTING GLASS PANELS UP TO 3/4" (19 MM) IN THICKNESS. OPTIONAL STANDOFFS WITH DOMED CAPS & OVAL-SHAPED BACK PLATES CAN ALSO BE USED. THE 4" X 9" (102 X 228 MM) STAINLESS STEEL BACK PLATE GIVES THE INSTALLER MORE ADJUSTMENT AND FOUR ANCHOR POINTS DURING THE INSTALLATION FOR THOSE TRICKY JOB SITE MOUNTING CONDITIONS. THIS BACK PLATE CAN BE FASTENED DIRECTLY TO STEEL, WOOD, OR CONCRETE SUBSTRATES AND SHIMMED AS REQUIRED WITH BLOCKING. MOUNTING FLAT HEAD ANCHORS MAY BE CONCEALED USING A STAINLESS STEEL PLATE COVER. THIS VERSATILE STANDOFF FITTING FEATURES TWO 2-3/8" (60.3 MM) DIAMETER DOMED CAPS WITH THREADED 3/8" - 16 THREADED STAINLESS STEEL RODS TO SECURE THE GLASS PANEL. THE 2" (51 MM) DIAMETER STANDOFFS ARE MECHANICALLY FASTENED TO A 3/8" (9.5 MM) THICK STAINLESS STEEL BACK PLATE THAT IS PRE-DRILLED FOR MOUNTING. TWO POPULAR FINISHES ON THE STAINLESS STEEL BACK PLATE OR COVER MATERIAL ARE AVAILABLE - BRUSHED & POLISHED. CUSTOM STANDOFF DIAMETERS AND LENGTHS ARE ALSO AVAILABLE. ATTACHMENT ANCHORS FOR STEEL, WOOD, OR CONCRETE SUBSTRATES ARE SOLD SEPARATELY.

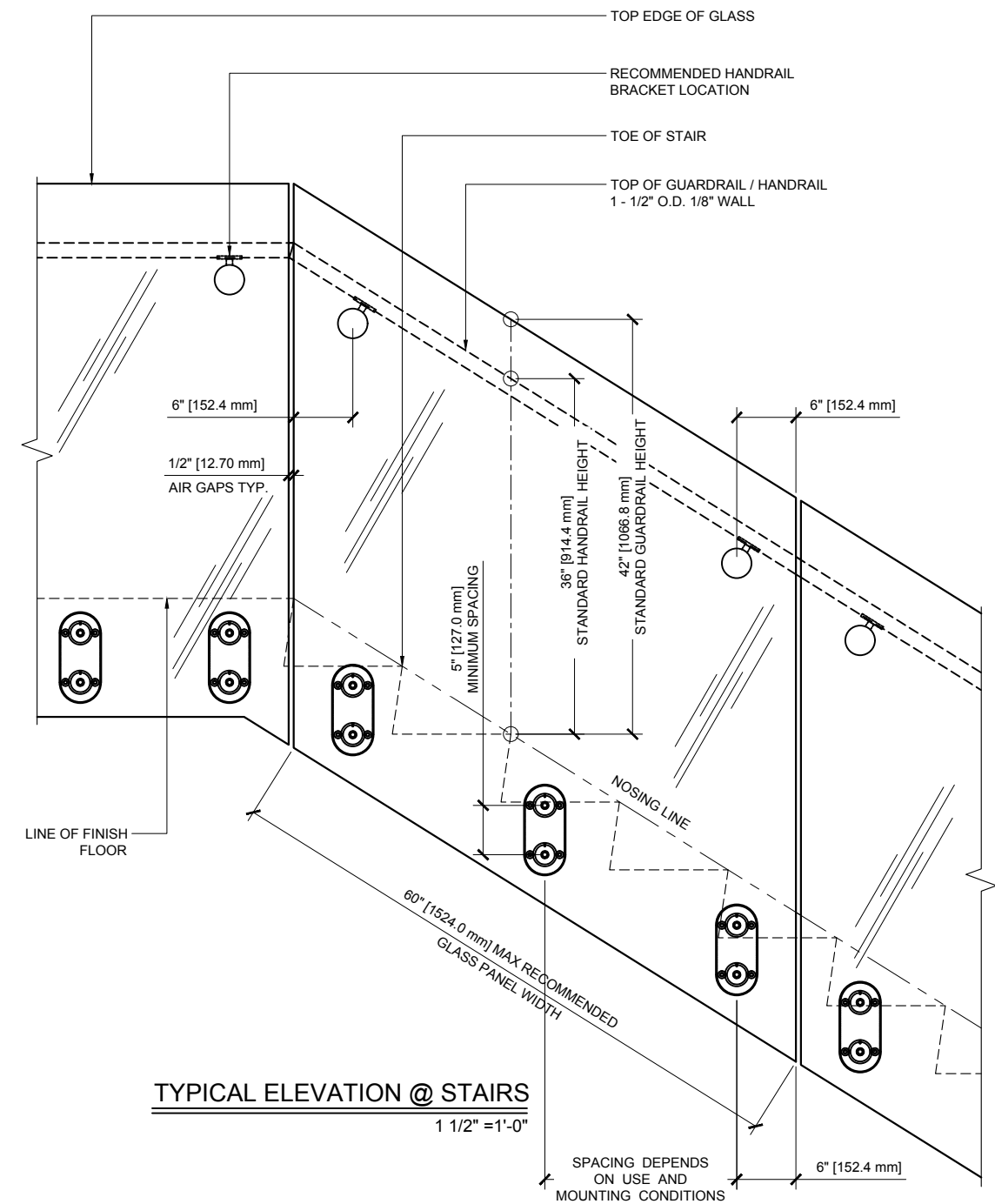
- * COMPACT DESIGN FOR MINIMAL OBSTRUCTION
- * COMPLETE WITH MOUNTING PLATE
- * FOR USE WITH 1/2" AND 3/4" (12 AND 19 mm) TEMPERED MONOLITHIC GLASS APPLICATIONS OR 9/16" & 27/32" (13.52 & 21.52 MM) LAMINATED GLASS USING DU PONT SENTRYGLAS INTERLAYERS
- * BRUSHED OR POLISHED 316 GRADE STAINLESS FINISHES AVAILABLE
- * DESIGNED FOR STEEL, WOOD, OR CONCRETE MOUNTING ATTACHMENT



TYPICAL STANDOFF GLASS RAIL ELEVATION
RS0B25 w/ DOMED CAP & OVAL BACK PLATE 1 1/2" = 1'-0"



TYPICAL SECTION
1 1/2" = 1'-0"



TYPICAL ELEVATION @ STAIRS
1 1/2" = 1'-0"

Revisions By:

C.R. LAURENCE CO. ARCHITECTURAL PRODUCTS
2503 E. Vernon Avenue, Los Angeles, CA 90058-1897
PH (800)-421-6144 FAX 800-587-7501 www.crlaurence.com

Description:
C. R. L.
SRS STANDOFF RAILING
SYSTEM DRAWINGS

Drawn By: RPD
Date: 11/10/16
Scale: AS NOTED
File Name: SRS.dwg

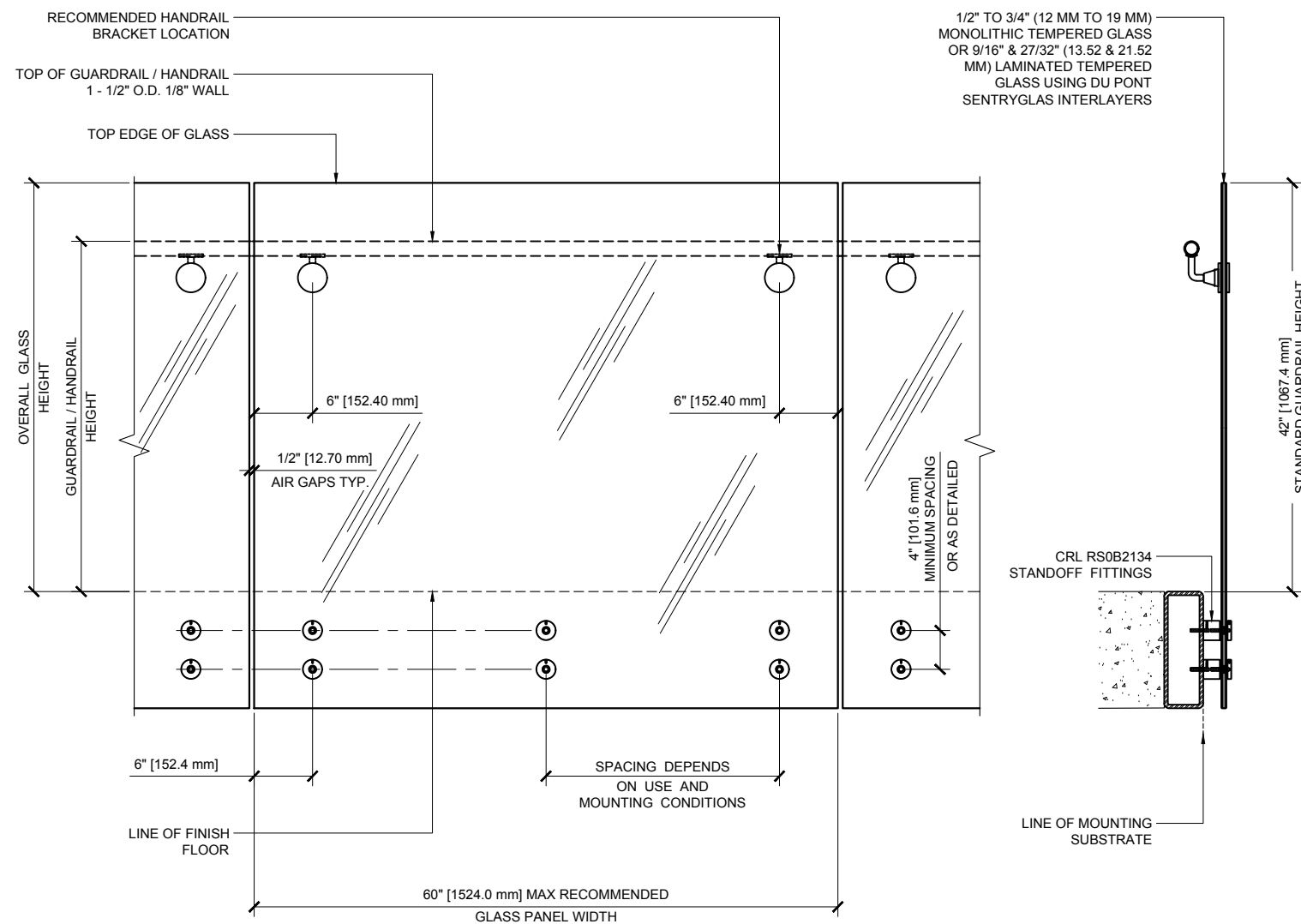


CRL SRS STANDOFF RAILING SYSTEM

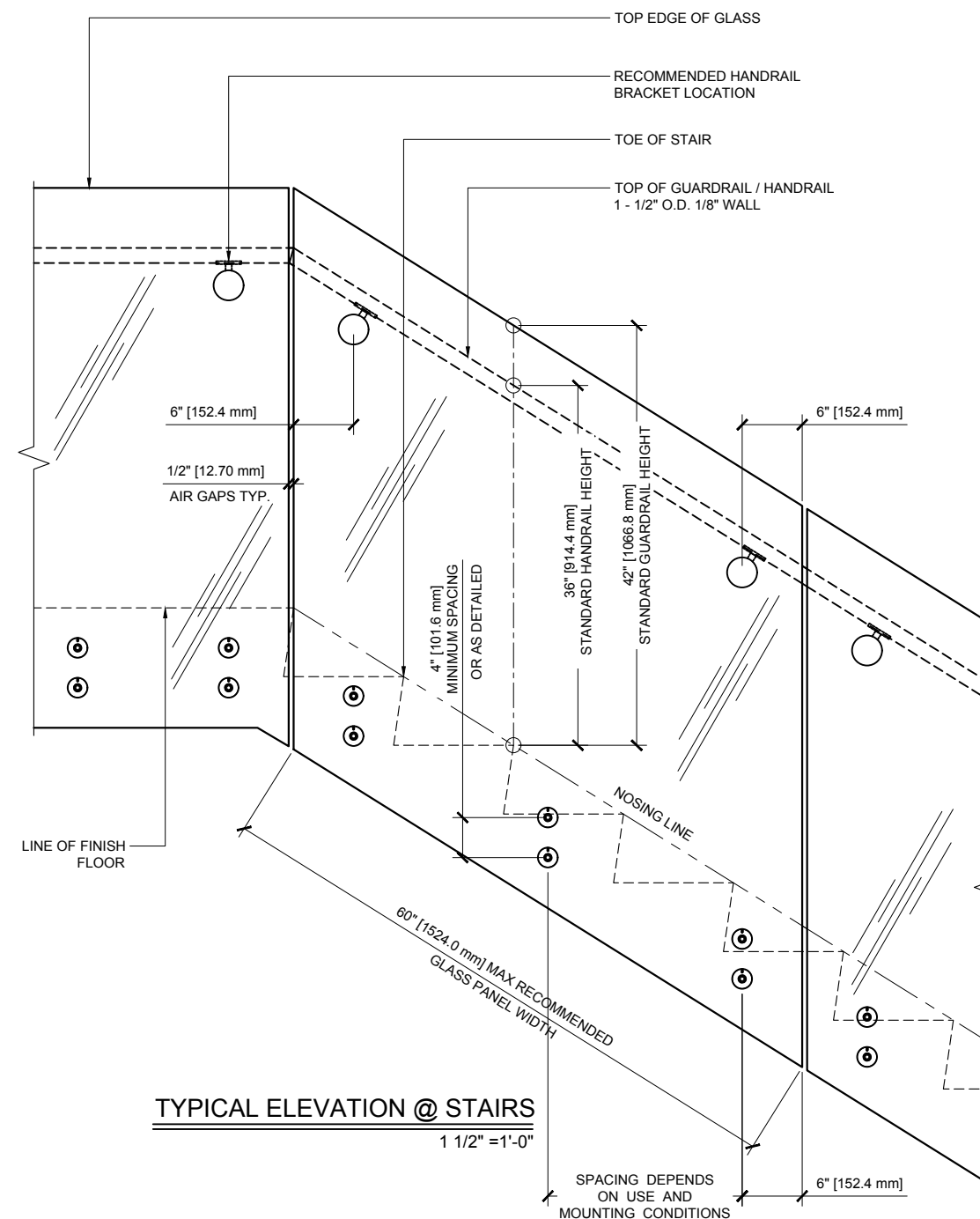
CRL GLASS RAIL STANDOFF FITTINGS RS0B2134

THESE HEAVY DUTY RAILING STANDOFFS ARE DESIGNED FOR GLASS HANDRAIL OR GUARDRAIL APPLICATION STANDARDS. THE SINGLE STANDOFF FITTING HAS A 2" (51 mm) DIAMETER x 1-3/4" (44 mm) STANDARD PROJECTION FROM THE INSTALLED ATTACHMENT POINT. CUSTOM LENGTHS AND DIAMETERS ARE ALSO AVAILABLE. IT COMES WITH A 3/8" - 16 x 2" (51 mm) ALLEN STUD FOR MOUNTING TO STEEL, ALONG WITH NECESSARY RUBBER WASHERS AND GROMMET. OTHER ATTACHMENT ANCHORS ARE ALSO AVAILABLE.

- * COMPACT DESIGN WITH BASE, CAP, AND MOUNTING STUD
- * FOR USE WITH 1/2" AND 3/4" (12 AND 19 mm) TEMPERED MONOLITHIC GLASS APPLICATIONS OR 9/16" & 27/32" (13.52 & 21.52 mm) LAMINATED GLASS USING DU PONT SENTRYGLAS INTERLAYERS. DO NOT USE WITH RAW OR ANNEALED GLASS
- * BRUSHED OR POLISHED 316 GRADE STAINLESS FINISHES AVAILABLE
- * DESIGNED FOR STEEL, ALUMINUM, AND CONCRETE SUBSTRATES



TYPICAL STANDOFF GLASS RAIL ELEVATION
STANDOFF FITTING RS0B2134 1 1/2" = 1'-0"



TYPICAL ELEVATION @ STAIRS
1 1/2" = 1'-0"

Revisions By:



Description:
C. R. L.
SRS STANDOFF RAILING
SYSTEM DRAWINGS

Drawn By: RPD
Date: 11/10/16
Scale: AS NOTED
File Name: SRS.dwg

Sheet

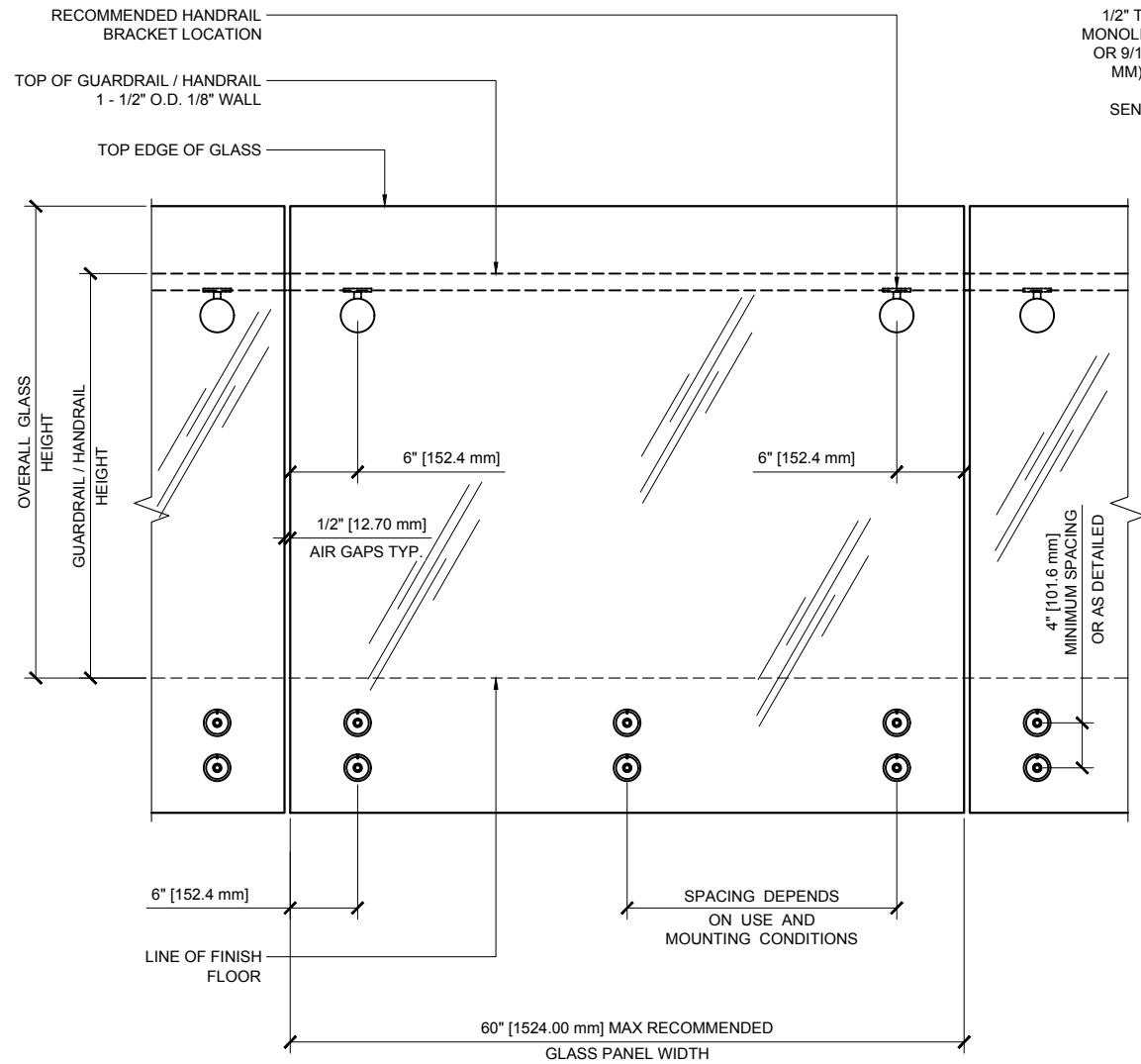


CRL SRS STANDOFF RAILING SYSTEM

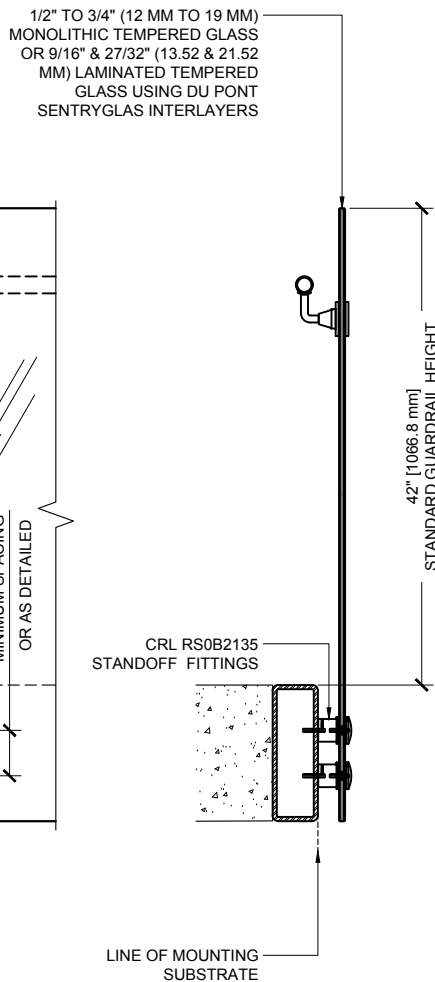
CRL GLASS RAIL STANDOFF FITTINGS RS0B2135 w/ DOMED CAP

THESE HEAVY DUTY RAILING STANDOFFS ARE DESIGNED FOR GLASS HANDRAIL OR GUARDRAIL APPLICATION STANDARDS. THE SINGLE VERSATILE STANDOFF FITTING FEATURES A 2-3/8" (60.3 MM) DIAMETER DOMED CAP WITH A THREADED 3/8" - 16 THREADED STAINLESS STEEL ROD TO SECURE THE GLASS PANEL. THE STANDOFF FITTING HAS A 2" (51 MM) DIAMETER x 1-3/4" (44 MM) STANDARD PROJECTION FROM THE INSTALLED ATTACHMENT POINT. CUSTOM LENGTHS AND DIAMETERS ARE ALSO AVAILABLE. IT COMES WITH A 3/8" - 16 x 2" (51 MM) ALLEN STUD FOR MOUNTING TO STEEL, ALONG WITH NECESSARY RUBBER WASHERS AND GROMMET. OTHER ATTACHMENT ANCHORS ARE ALSO AVAILABLE.

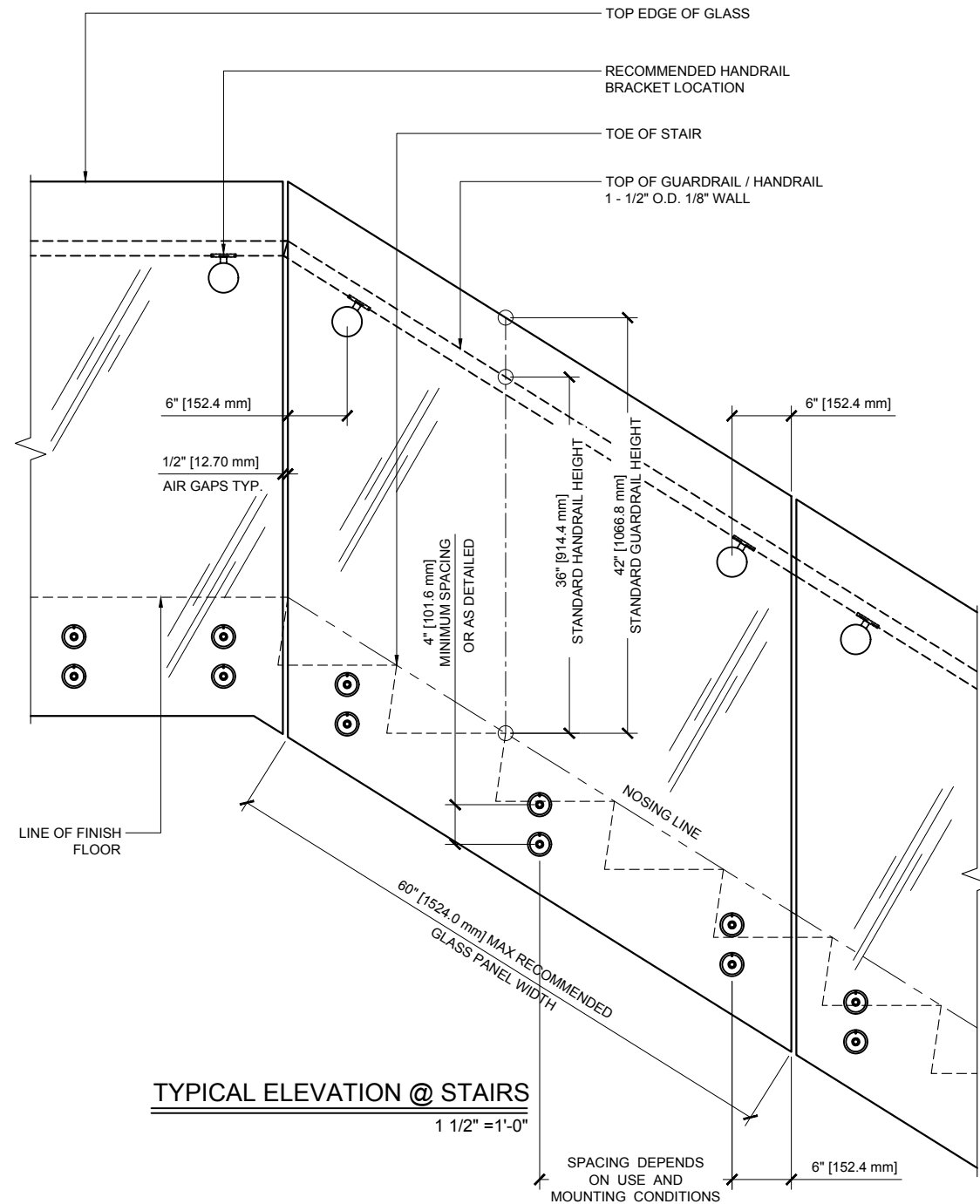
- * COMPACT DESIGN WITH BASE, CAP, AND MOUNTING STUD
- * FOR USE WITH 1/2" AND 3/4" (12 AND 19 mm) TEMPERED MONOLITHIC GLASS APPLICATIONS OR 9/16" & 27/32" (13.52 & 21.52 MM) LAMINATED GLASS USING DU PONT SENTRYGLAS INTERLAYERS. DO NOT USE WITH RAW OR ANNEALED GLASS
- * BRUSHED OR POLISHED 316 GRADE STAINLESS FINISHES AVAILABLE
- * DESIGNED FOR STEEL, ALUMINUM, AND CONCRETE SUBSTRATES



TYPICAL STANDOFF GLASS RAIL ELEVATION
STANDOFF FITTING RS0B2135 1 1/2" = 1'-0"



TYPICAL SECTION
1 1/2" = 1'-0"



TYPICAL ELEVATION @ STAIRS
1 1/2" = 1'-0"

Revisions By:

C.R. LAURENCE CO. ARCHITECTURAL PRODUCTS
2503 E. Vernon Avenue, Los Angeles, CA 90058-1897
PH: (800)-421-6144 FX: 800-587-7501 www.crlaurence.com

Description:
C. R. L.
SRS STANDOFF RAILING
SYSTEM DRAWINGS

Drawn By: RPD
Date: 11/10/16
Scale: AS NOTED
File Name: SRS.dwg
Sheet

SRS STANDOFF RAILING SYSTEM

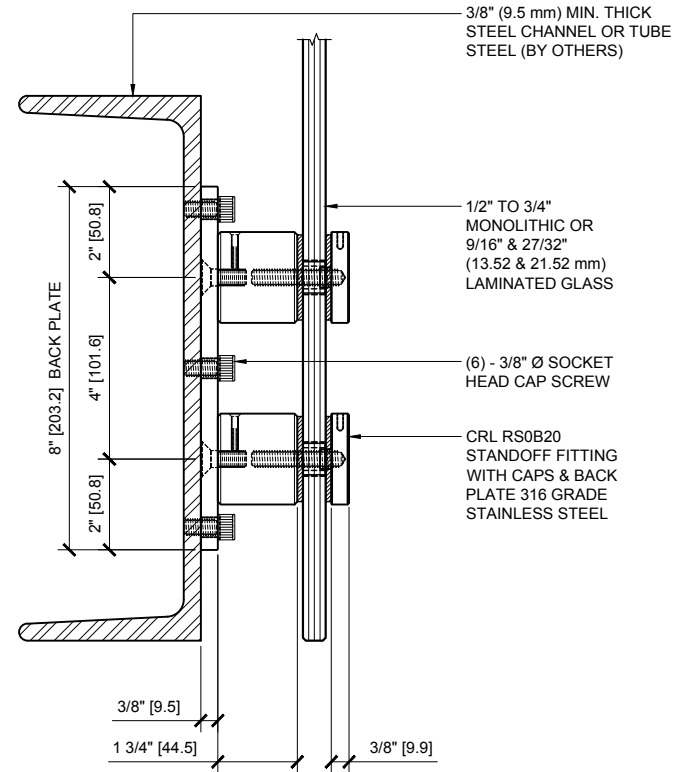
Revisions By:

CAL
ALUMINUM
C.R. LAURENCE CO. ARCHITECTURAL PRODUCTS
2503 E. Vernon Avenue, Los Angeles, CA 90058-1897
PH (800)-421-6144 FAX 800-587-7501 www.crlaurence.com

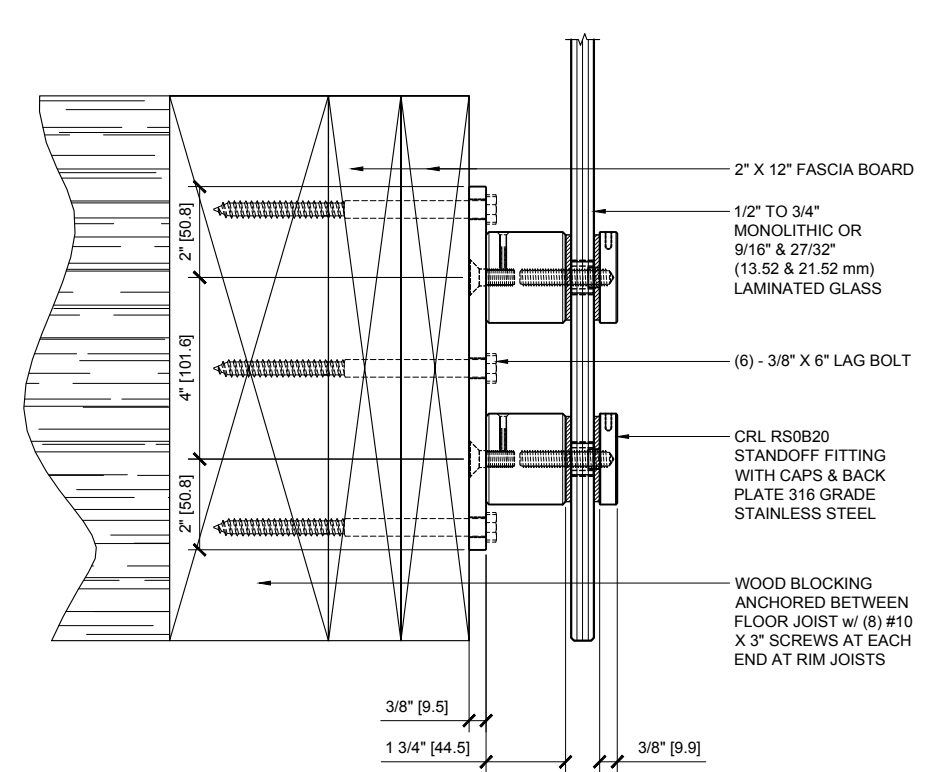
Description:
C. R. L.
SRS STANDOFF RAILING
SYSTEM DRAWINGS

Drawn By: RPD
Date: 11/10/16
Scale: AS NOTED
File Name: SRS.dwg

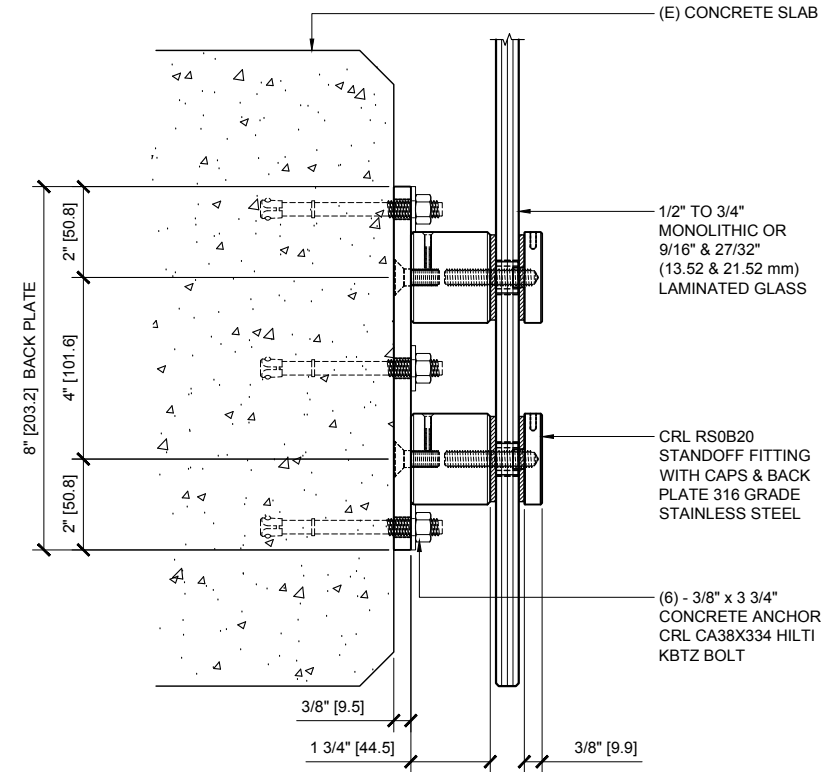
Sheet



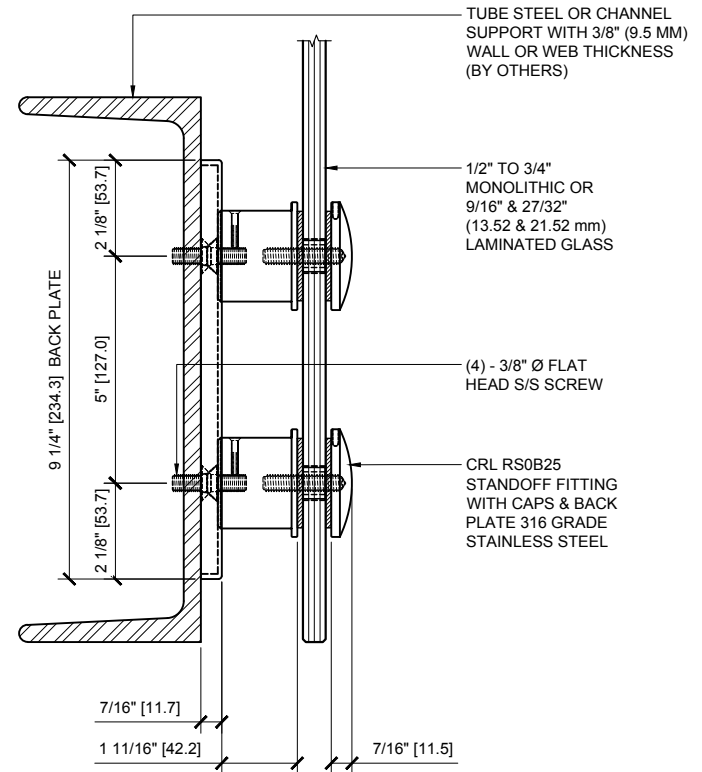
TYPICAL FASCIA MOUNT DETAIL
CRL RS0B20 ON STEEL SUBSTRATE 6" = 1'-0"



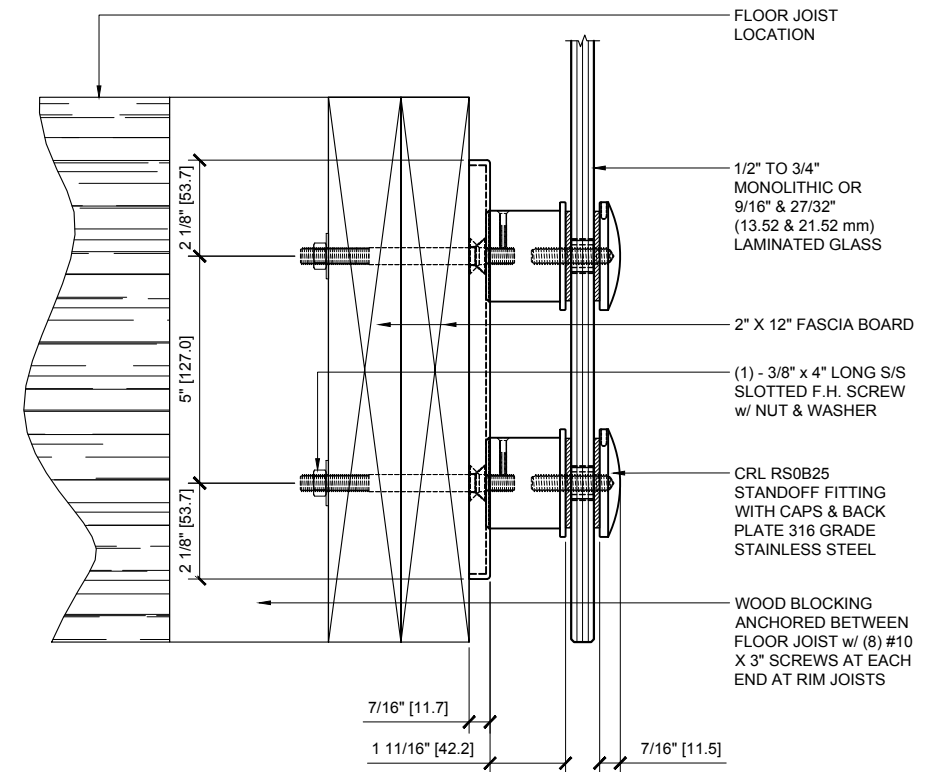
TYPICAL FASCIA MOUNT DETAIL
CRL RS0B20 ON WOOD SUBSTRATE 6" = 1'-0"



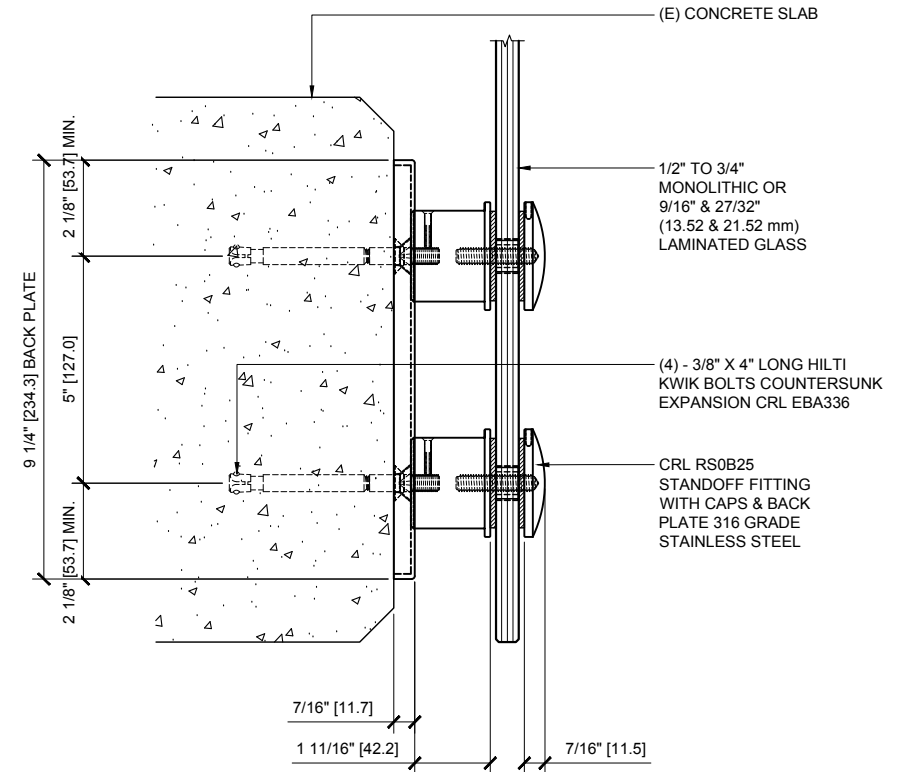
TYPICAL FASCIA MOUNT DETAIL
CRL RS0B20 ON CONCRETE SUBSTRATE 6" = 1'-0"



TYPICAL FASCIA MOUNT DETAIL
CRL RS0B25 ON STEEL SUBSTRATE 6" = 1'-0"



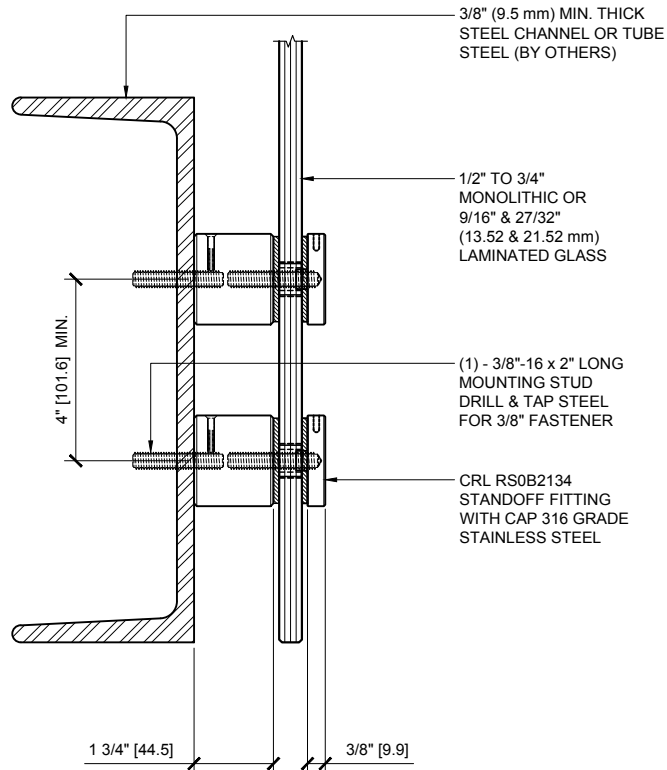
TYPICAL FASCIA MOUNT DETAIL
CRL RS0B25 ON WOOD SUBSTRATE 6" = 1'-0"



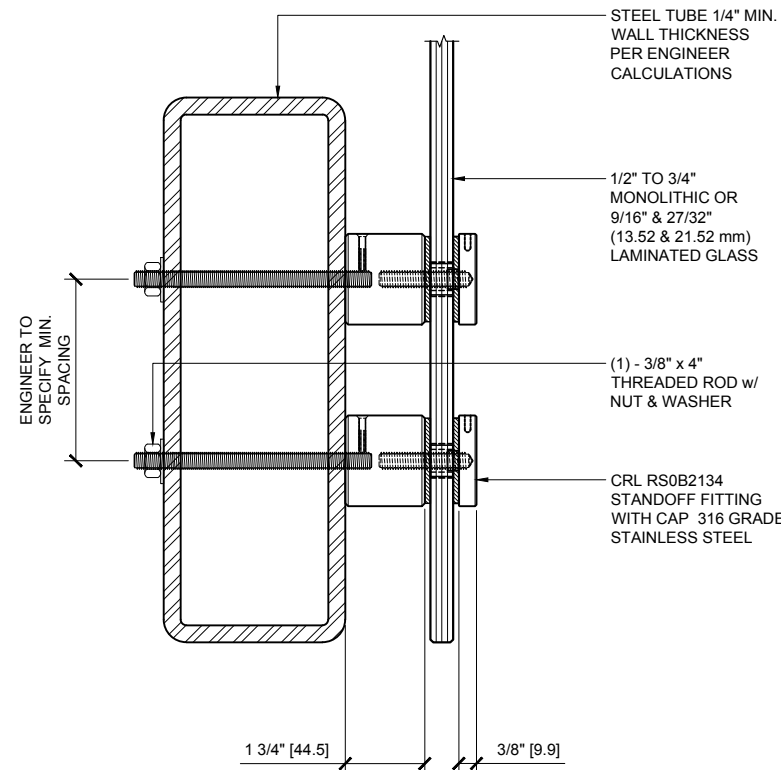
TYPICAL FASCIA MOUNT DETAIL
CRL RS0B25 ON CONCRETE SUBSTRATE 6" = 1'-0"

SRS STANDOFF RAILING SYSTEM

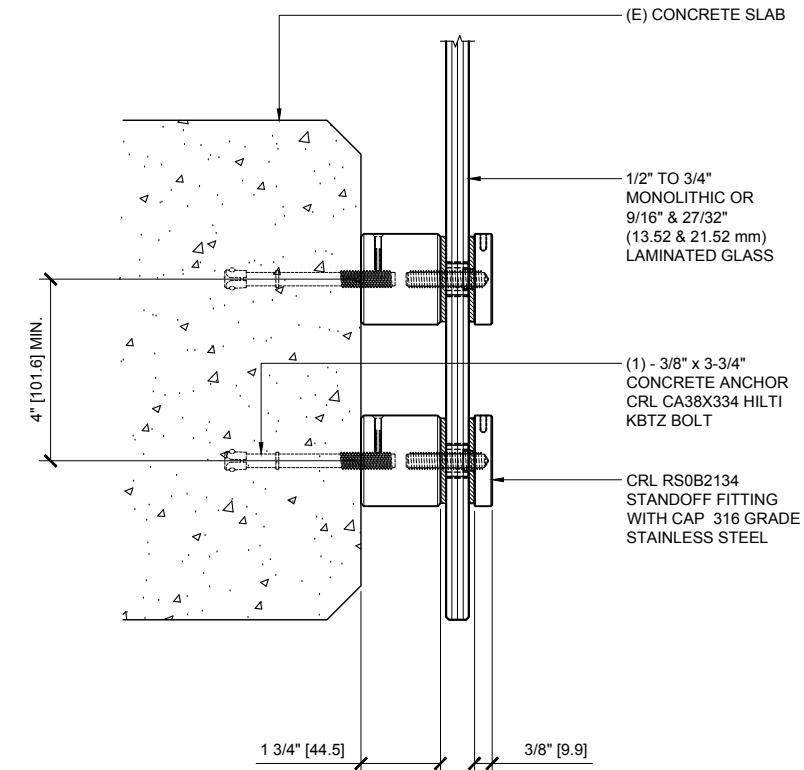
Revisions By:



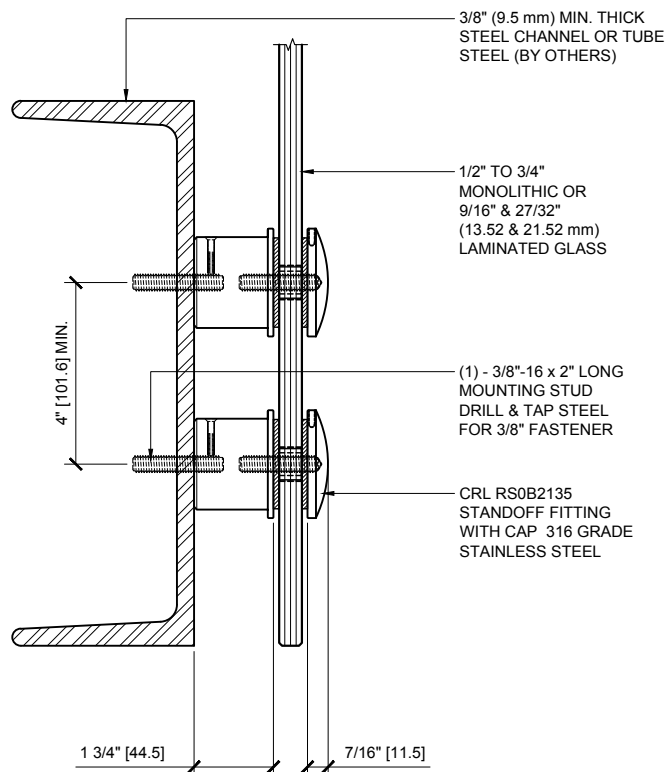
TYPICAL FASCIA MOUNT DETAIL
CRL RS0B2134 ON STEEL CHANNEL SUBSTRATE 6" = 1'-0"



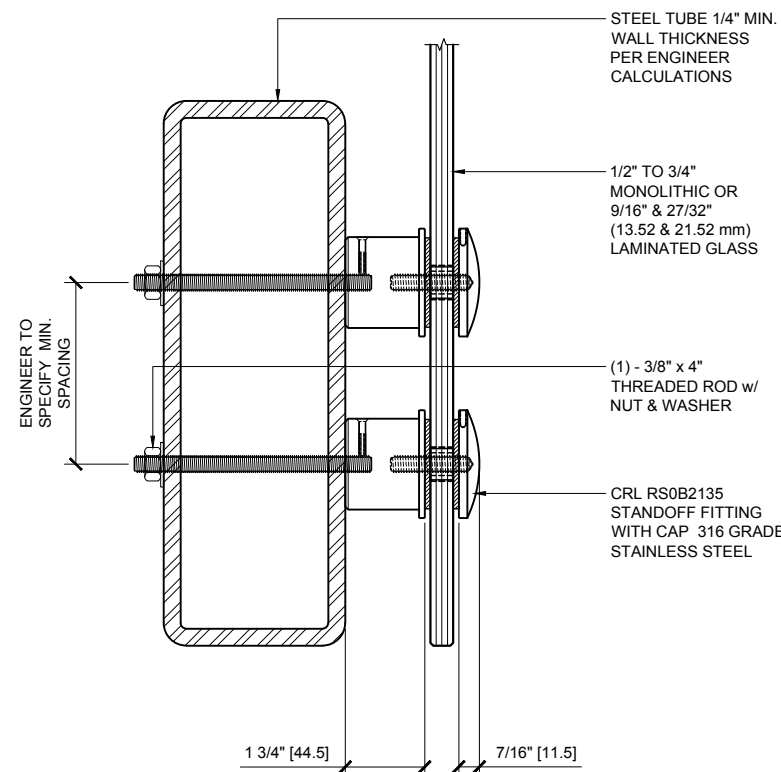
TYPICAL FASCIA MOUNT DETAIL
CRL RS0B2134 ON STEEL TUBE SUBSTRATE 6" = 1'-0"



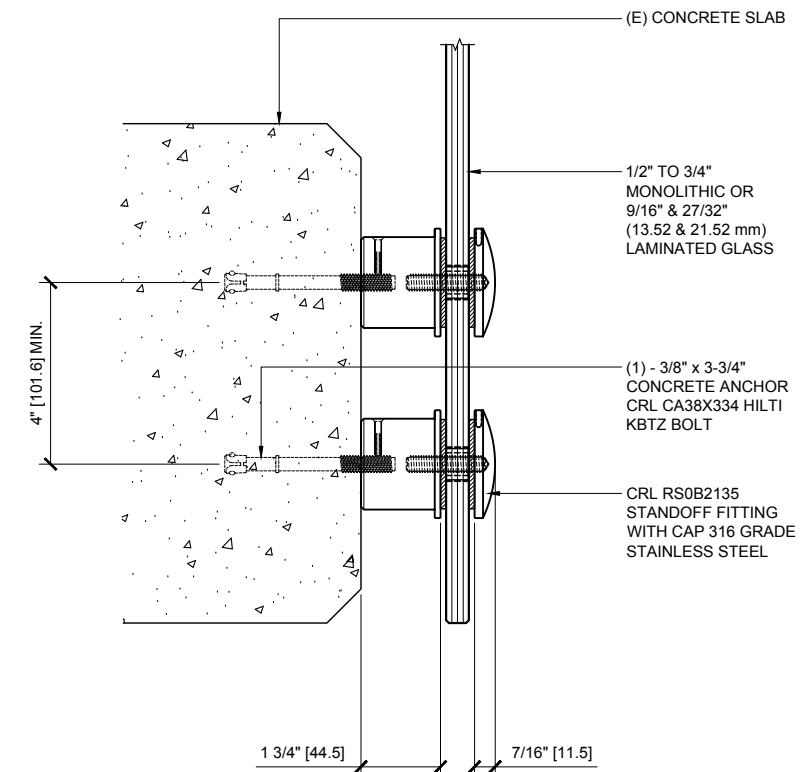
TYPICAL FASCIA MOUNT DETAIL
CRL RS0B2134 ON CONCRETE SUBSTRATE 6" = 1'-0"



TYPICAL FASCIA MOUNT DETAIL
CRL RS0B2135 ON STEEL CHANNEL SUBSTRATE 6" = 1'-0"



TYPICAL FASCIA MOUNT DETAIL
CRL RS0B2135 ON STEEL TUBE SUBSTRATE 6" = 1'-0"



TYPICAL FASCIA MOUNT DETAIL
CRL RS0B2135 ON CONCRETE SUBSTRATE 6" = 1'-0"

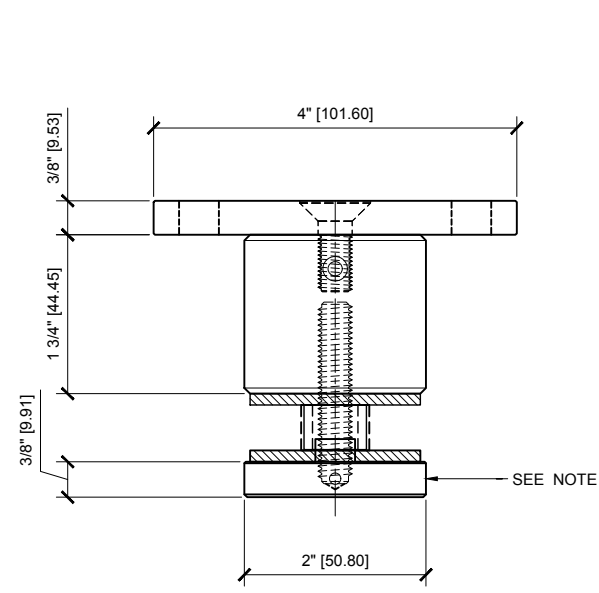


Description:
C. R. L.
SRS STANDOFF RAILING
SYSTEM DRAWINGS

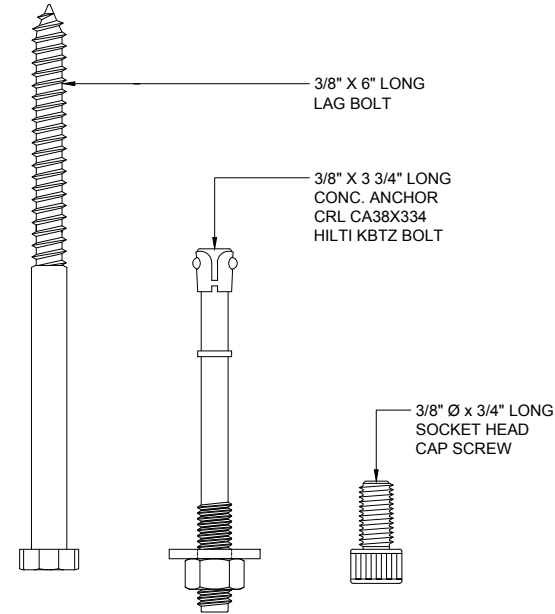
Drawn By: RPD
Date: 11/10/16
Scale: AS NOTED
File Name: SRS.dwg

Sheet

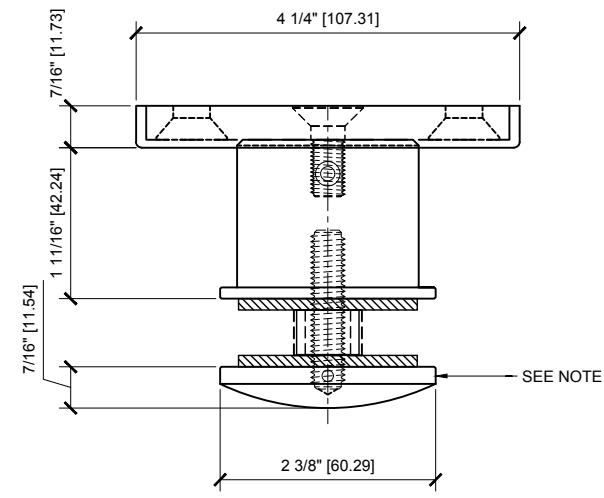
SRS STANDOFF RAILING SYSTEM



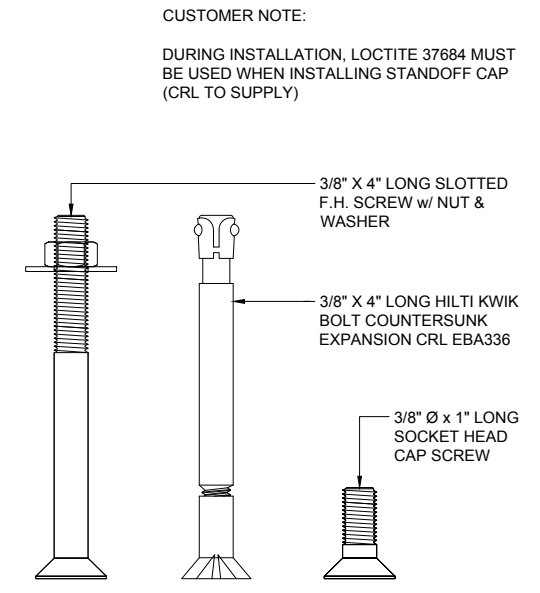
TOP VIEW



MOUNTING BOLT OPTIONS

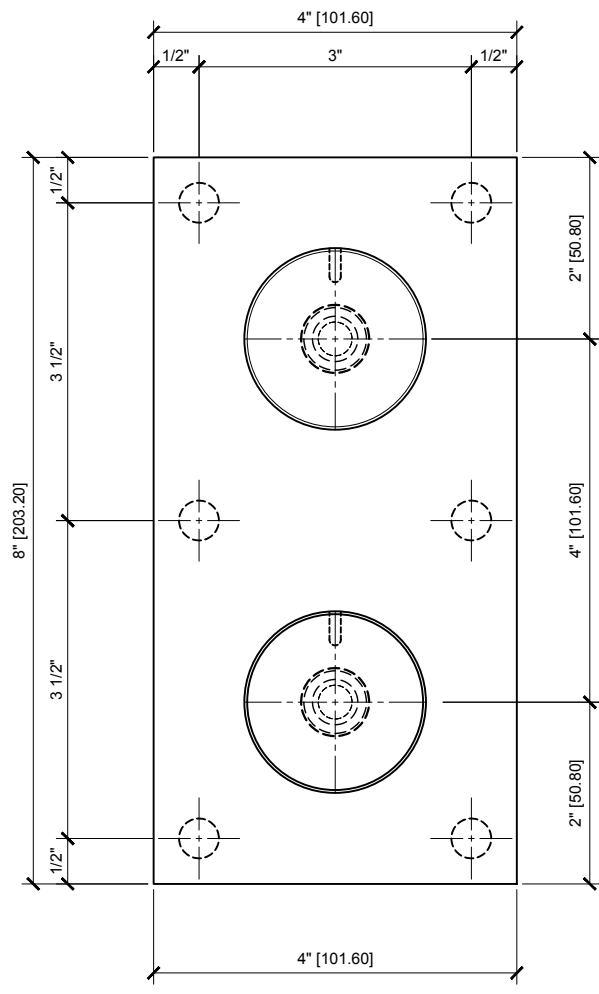


TOP VIEW

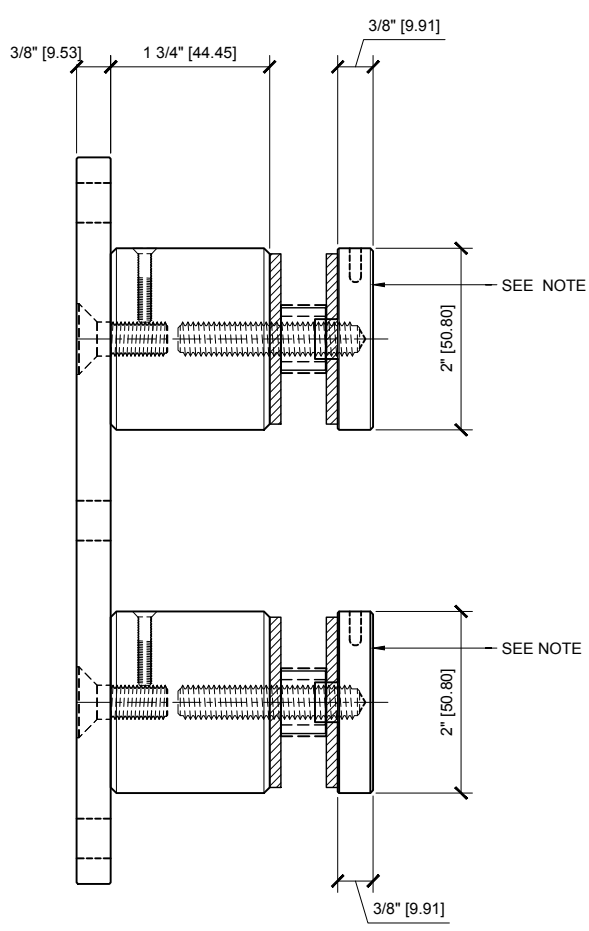


MOUNTING BOLT OPTIONS

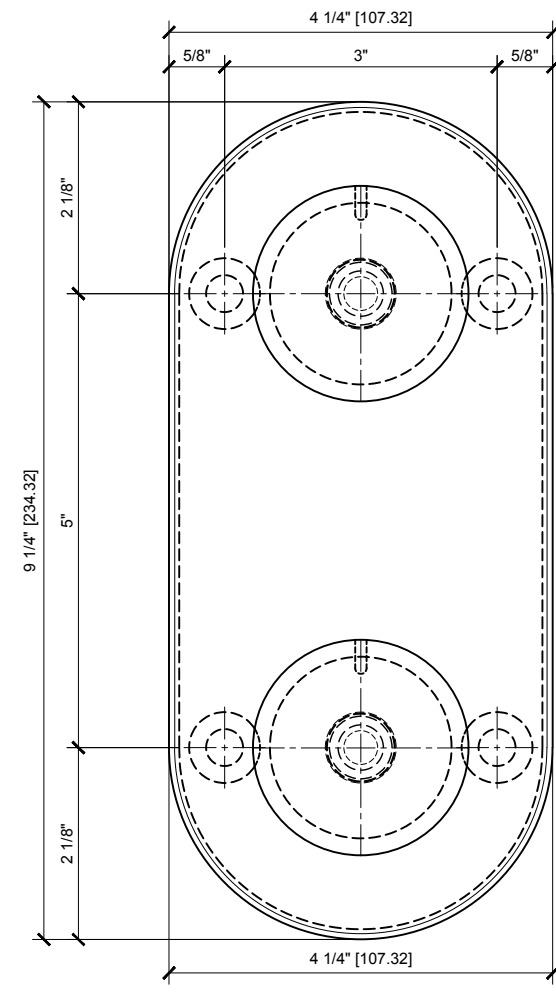
CUSTOMER NOTE:
DURING INSTALLATION, LOCTITE 37684 MUST BE USED WHEN INSTALLING STANDOFF CAP (CRL TO SUPPLY)



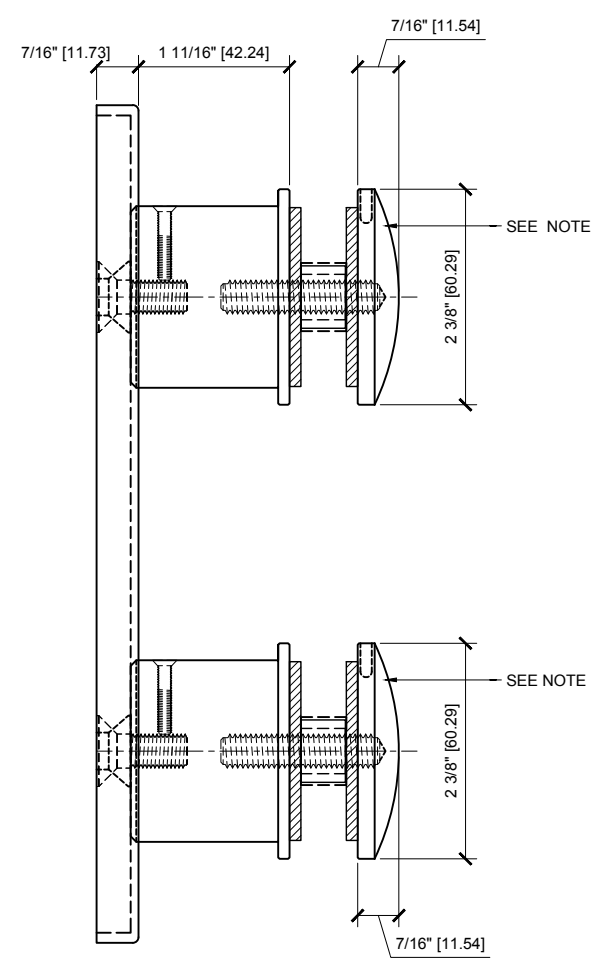
FRONT VIEW



SIDE VIEW



FRONT VIEW



SIDE VIEW

RS0B20 STANDOFF ASSEMBLY WITH RECTANGULAR BACK PLATE
316 GRADE STAINLESS STEEL

RS0B25 STANDOFF ASSEMBLY WITH DOMED CAP & OVAL BACK PLATE
316 GRADE STAINLESS STEEL

1'-0" = 1'-0"

1'-0" = 1'-0"

Revisions By:



Description:
C. R. L.
SRS STANDOFF RAILING
SYSTEM DRAWINGS

Drawn By: RPD
Date: 11/10/16
Scale: AS NOTED
File Name: SRS.dwg

Sheet

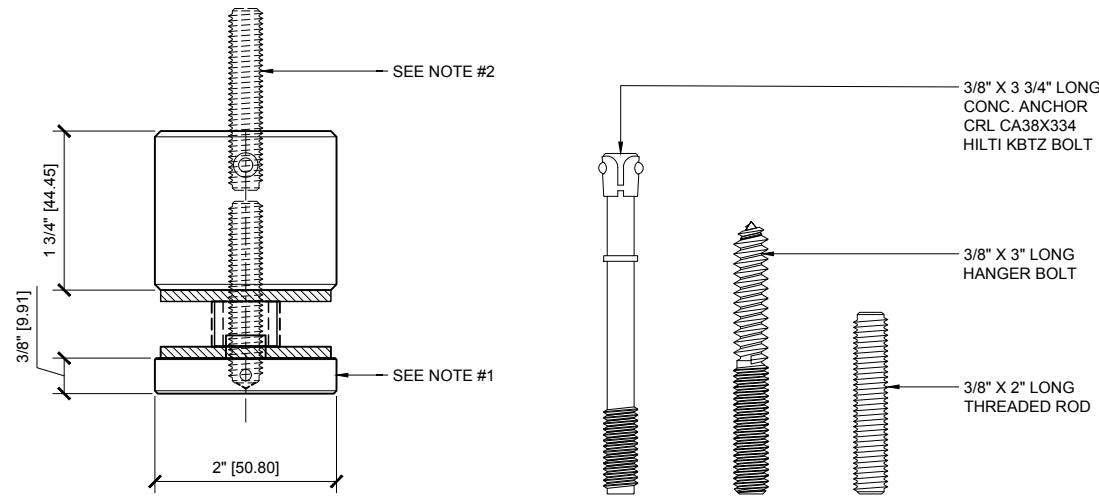
SRS STANDOFF RAILING SYSTEM

Revisions By:

CUSTOMER NOTES:

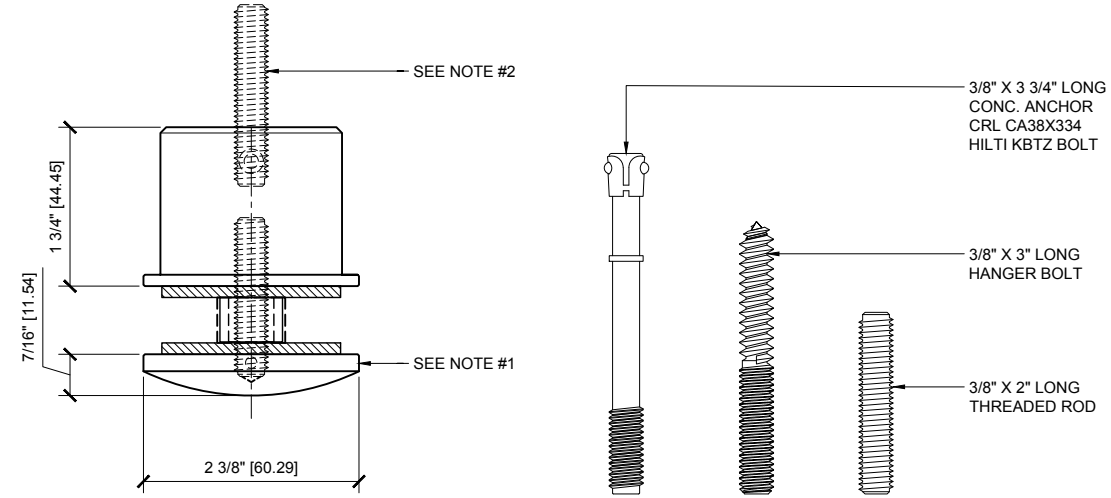
1. DURING INSTALLATION, LOCTITE 37684 MUST BE USED WHEN INSTALLING STANDOFF CAP (CRL TO SUPPLY)

2. NOT RECOMMENDED FOR WOOD FASCIA ATTACHMENT EXCEPT FOR CASES WITH ENGINEER'S APPROVAL. FOR WOOD OR ALUMINUM FASCIA APPLICATIONS, ENGINEER TO SPECIFY MINIMUM HORIZONTAL & VERTICAL SPACING BETWEEN STANDOFF FITTINGS AND TYPE OF MOUNTING FASTENERS TO BE USED.



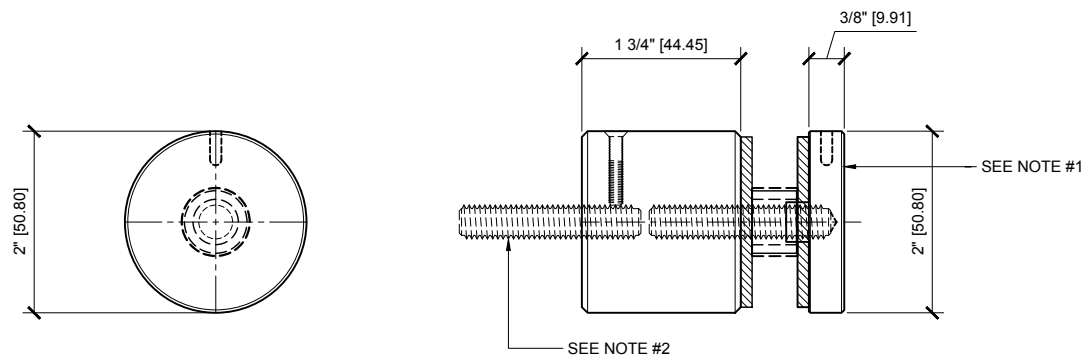
TOP VIEW

MOUNTING BOLT OPTIONS



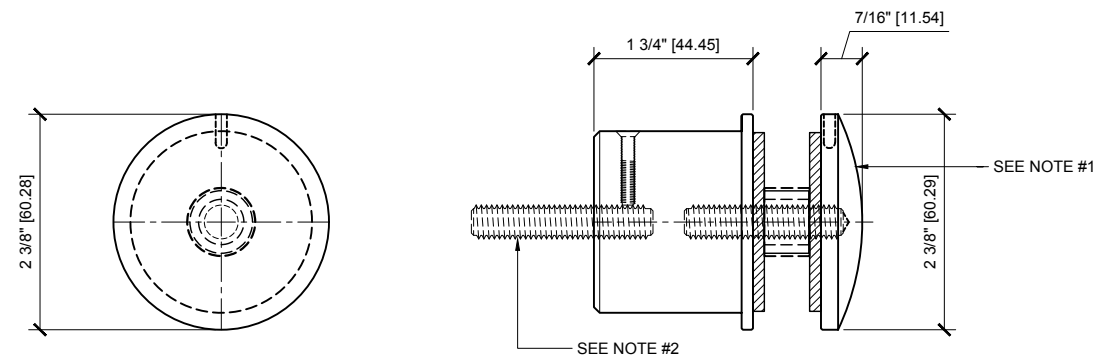
TOP VIEW

MOUNTING BOLT OPTIONS



FRONT VIEW

SIDE VIEW



FRONT VIEW

SIDE VIEW

RS0B2134 STANDOFF FITTING

316 GRADE STAINLESS STEEL 1'-0" = 1'-0"

RS0B2135 STANDOFF FITTING w/ DOMED CAP

316 GRADE STAINLESS STEEL 1'-0" = 1'-0"



Description:
C. R. L.
SRS STANDOFF RAILING
SYSTEM DRAWINGS

Drawn By: RPD
Date: 11/10/16
Scale: AS NOTED
File Name: SRS.dwg

Sheet