

- 1) WITH THE DOOR PREPPED FOR 1275 SURFACE VER. ROD  
PLEASE REVIEW: DOOR PREP.DWG. 10-1082-1  
INSTALL THE TOP BRACKET (LATCH HOLDER) FIRMLY SECURE  
THE BRACKET TO THE STILE WITH THE 1/4-20x1-7/32 COMBO  
SCREW THRU HOLE "A". INSTALL THE TOP LATCH ASSEMBLY  
ON THE BRACKET & STILE THRU HOLE "B" BY USING THE  
OTHER 1/4-20x1-7/32 COMBO SCREW. WITH THE SCREW FIRMLY TIGHTEN,  
INSERT THE BRACKET PIN SIDE-TOP HOLE OF OF THE BRACKET & LATCH  
ASSEMBLY. THE LATCH ASSEMBLY SHOULD HAVE SOME PLAY (FIT LOOSE).  
SECURE THE PIN WITH THE CRESCENT CLIP PROVIDED.

**NOTE-WHEN USING OUTSIDE TRIM REF. DWG'S 10-1090 & 10-997**

- 2) INSTALL BOTTOM BRACKET (LATCH HOLDER) TO STILE BOTTOM HOLE  
"E" FIRMLY SECURE A 1/4-20x1-7/32 COMBO SCREW, THEN  
INSTALL BOTTOM LATCH ASSEMBLY BRACKET AND SECURE WITH  
1/4-20x1-7/32 COMBO SCREW THROUGH HOLE "D"  
INSERT THE BRACKET PIN THRU THE SIDE TOP PIN HOLE AS  
PER VIEW #7, SECURE THE PIN WITH CRESCENT CLIP PROVIDED.
- 3) ATTACH THE ROD ADJUSTER ENDS TO THE TOP & BTM.  
LATCH ALL THREAD LINKAGE RODS. NOTE: THREAD THEM ON APPROX.  
"C"4" DOWN ON THE ROD.
- 4) INSTALL SNAP COVER BASE FOR THE TOP & BOTTOM SNAP COVERS  
PER VIEW'S #5,&#7

**PANIC ATTACHMENT:**

- 1) INSERT TOP AND BOTTOM ROD ADJUSTERS INTO THE LINKAGE ACCESS HOLES  
SECURE FIRMLY PANIC BAR (ACTIVE END) PER "C" HOLES IN VIEW #6  
WITH (2) 10-32x7/8 AND ONE 1/4-20 X 1/2 ROUND HD. WITH SEMS ON  
INACTIVE END.  
AS PER VIEW #6 PANIC BASE "LINKAGE ACCESS HOLES".

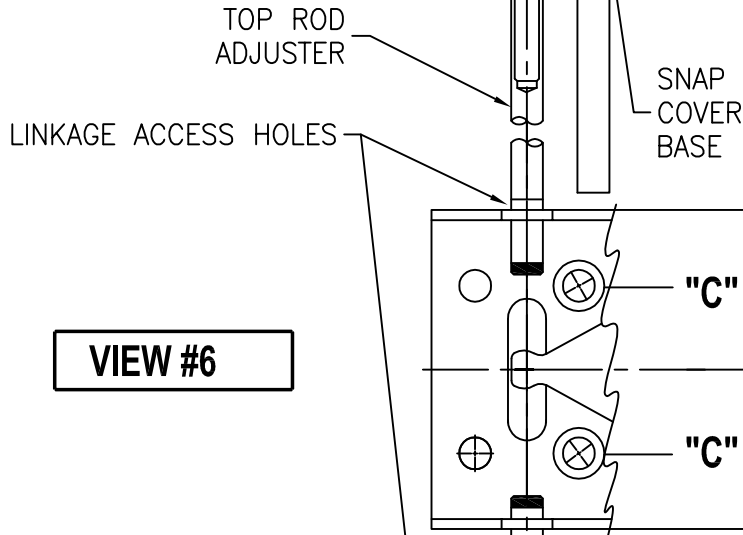
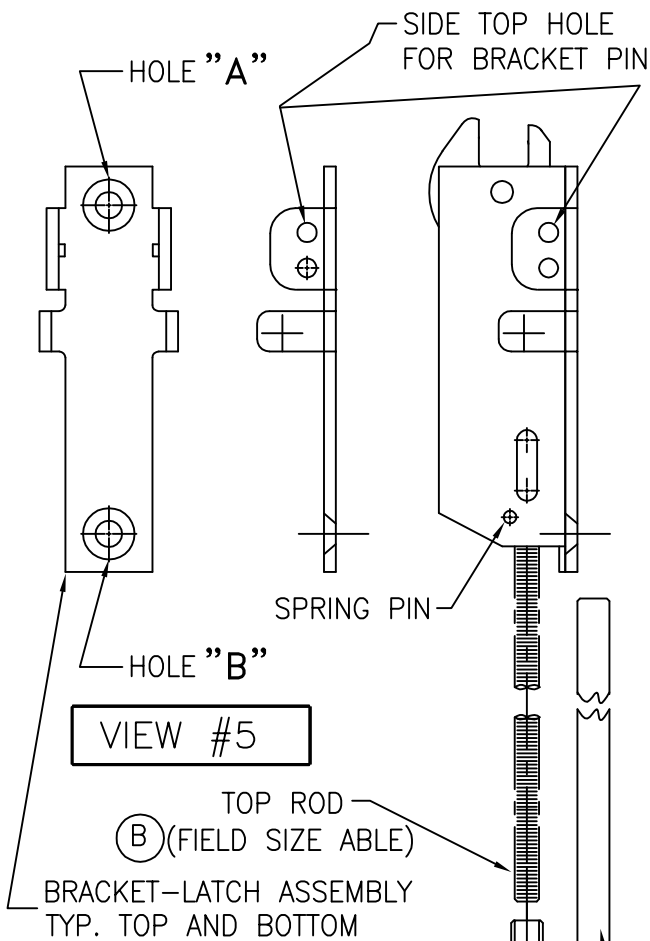
**TOP ROD:**

**ROD LINKAGE ADJUSTMENTS:**

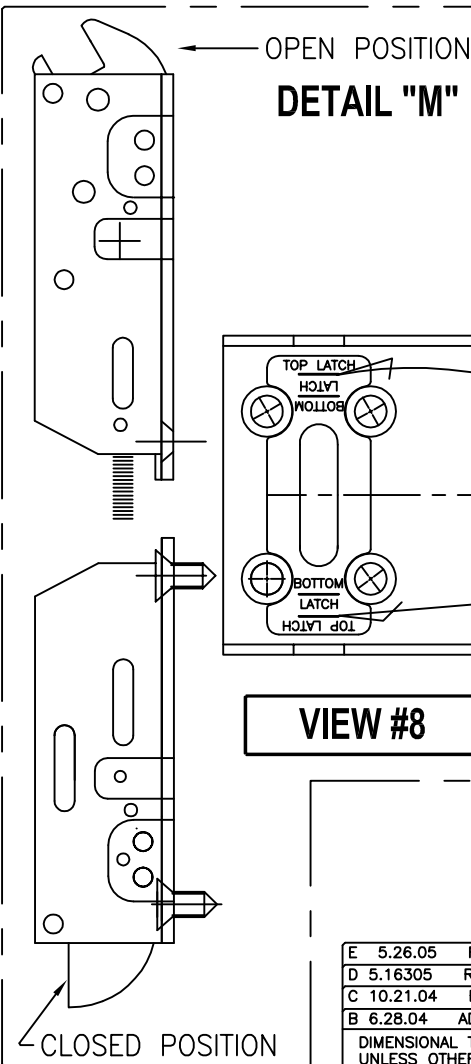
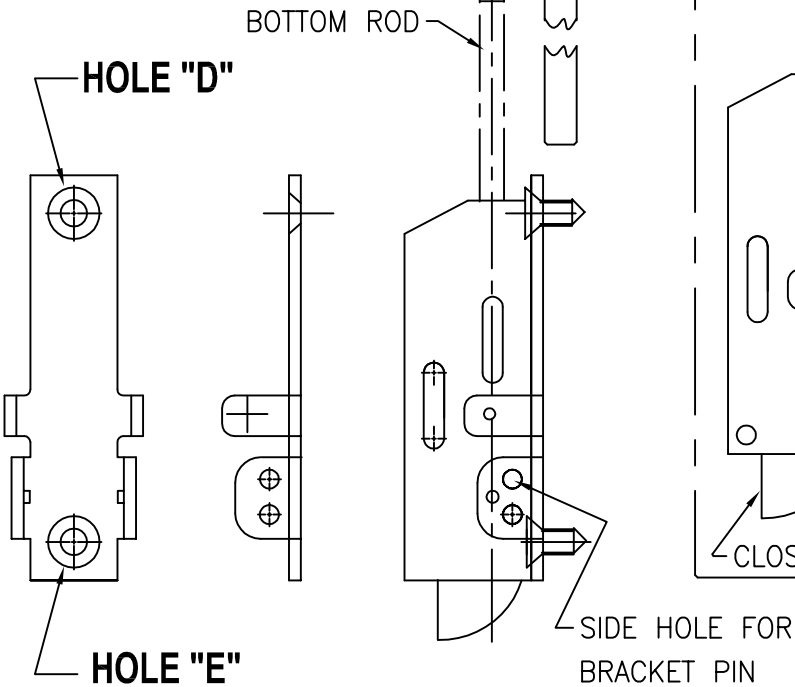
- 1) MAKE SURE TOP LATCH IS IN THE OPEN POSITION (PER DETAIL "M")  
2) TURN ADJUSTER ROD SO THAT THE END OF ADJUSTER ROD IS  
ALIGNED WITH THE TOP MOST LINE MARKING, JUST UNDER THE  
WORDS "TOP LATCH" AS PER THE PRINTED DECAL PER VIEW #8  
3) THE ADJUSTER ROD CUT-OUT MUST BE FACING YOU."FRONT VIEW"

**BOTTOM ROD:**

- 1) MAKE SURE THE BOTTOM LATCH IS IN THE CLOSED POSITION AS PER  
VIEW #8  
2) TURN ADJUSTER ROD SO THAT THE TOP EDGE OF THE ADJUSTER  
ROD CUT-OUT ALIGNS WITH THE LOWEST LINE MARKING JUST UNDER THE WORD  
"LATCH" ON THE PRINTED DECAL PER VIEW #8  
3) THE ADJUSTER ROD CUT-OUT MUST BE FACING YOU."FRONT VIEW"



**VIEW #7**



**VIEW #8**

E 5.26.05	REF. PG	3 OF 3	ECN1841	RM
D 5.16305	REF. PG.	1 OF 3	ECN1838	RM
C 10.21.04	REF. PG.	1 OF 3	ECN1815	RM
B 6.28.04	ADD "FIELD SIZE ABLE"	NOTE FOR TOP ROD	ECN1788	RM
DIMENSIONAL TOLERANCES UNLESS OTHERWISE SPECIFIED		APPROVALS	DATE	
DECIMAL DIMENSIONS .XX ± .010		APPROVED		
DECIMAL DIMENSIONS .XXX ± .005		CHECKED		
ANGULAR ± ° FRACTIONAL ± 1/64		DRAWN	R.M.	08.02.02
MATERIAL		SCALE	FULL	
FINISH		SEE NOTES		
HEAT TREAT				

FILE NO. 10-1082-2

NEXT ASSY. 31-1275

QTY. USED 1

3447 UNION PACIFIC AVE.  
LOS ANGELES, CALIF. 90023

**jackson** CORPORATION®

SHEET 2 OF 3 SHEETS

DWG. NO. 10-1082-2

REV. E

MOUNTING INSTRUCTIONS

TOP & BTM. LATCHES 1275