



Reliance™-TC SS Curtain Wall

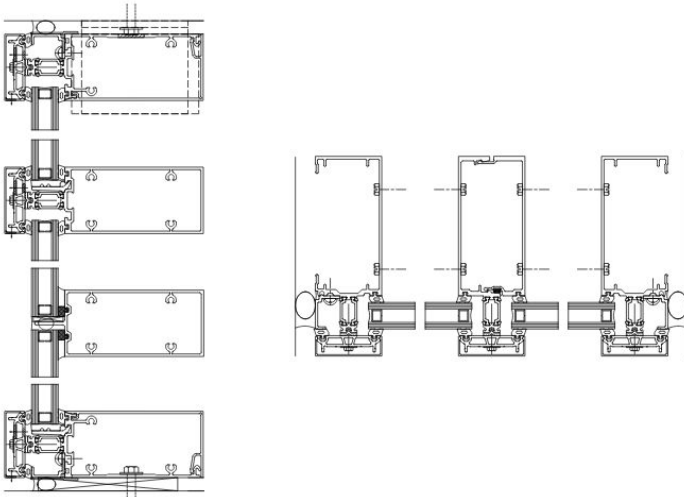
Build Faster. Perform Stronger.

Curtain wall projects are being pushed to do more - meet higher thermal expectations, respond to a broader range of façade conditions, and keep work moving from shop to site without losing momentum. Reliance™-TC SS is built for that reality.

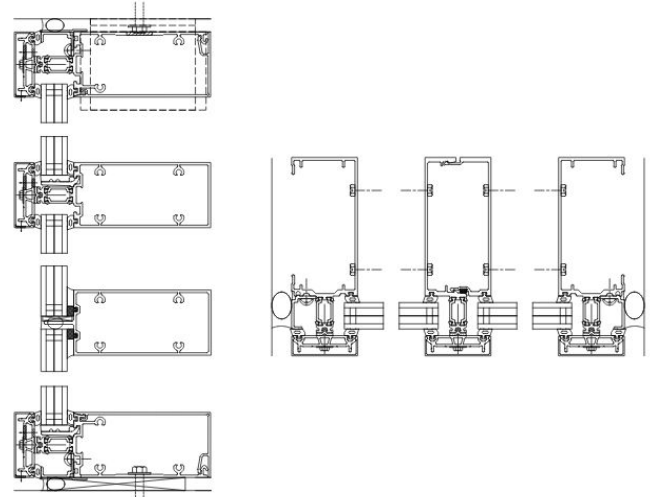
This **high-thermal-performing screw-spline curtain wall** brings together **efficient fabrication, multiple glazing configurations, and adaptable system depths** in one flexible system. **Choose advanced performance with a 1" IGU and an optional polyamide pressure plate to help reduce U-factors** and improve CRF, **or step up to a 1" thin triple IGU designed to support premium thermal performance with a U-factor of 0.19**. With **dual-finish capability and cohesive integration with entrances, operable vents, and sunshade systems**, Reliance™-TC SS supports smoother execution, greater façade flexibility, and thermal performance **designed to help meet IECC Climate Zones 4-8 and evolving stretch codes**.

Reliance™-TC SS Curtain Wall

Double Pane*



Thin Triple Pane*



* SSG Glazing Configuration with Polyamide Pressure Plate. Additional Glazing Configurations Available - See Website for Details

Features

Sightline: 2-1/2"

Overall system depths: 6", 7-1/4"

Accepts 1" insulating glass or 1" thin triple insulating glass unit

Polyamide and Aluminum Pressure Plate options

Thermally broken utilizing 27 mm and 30 mm thermal struts and an EPDM isolator

Available in inside-glazed and outside-glazed configurations

Captured and SSG (Structural Silicone Glazed) vertical or horizontal mullions

Dry Glazed

Zone Glazed

Screw Spline Assembly

Field Glazed

Twin Span with Splice Sleeve

Low Profile Corner Mullions

Accommodates standard and thermal doors, and Zero Sightline projected and casement vents

Integrated Solar Eclipse™ Sunshade

Performance

Thermal Performance per NFRC 100 when using 1" CoG insulating glass of 0.24 with Polyamide Pressure Plate: U-factor = 0.29

Thermal Performance per NFRC 100 when using 1" CoG thin triple insulating glass of 0.10: U-factor = 0.19

CRF: Frame 81 / Glass 73

Air Infiltration: <0.06 CFM/SQFT (6.24 PSF) per ASTM E283

Static Water: 20 PSF per ASTM E331

Dynamic Water: 20 PSF per AAMA 501.1

Seismic per AMMA 501.4 and 501.6

STC per ASTM E90: 32 with standard 1" IGU; 38 with laminated 1" IGU

OITC per ASTM E90: 26 with standard 1" IGU; 32 with laminated 1" IGU

NFRC Certified Products Directory and CMAST

Commercial Trendline Approach Directory (CTAD) - NFRC 715

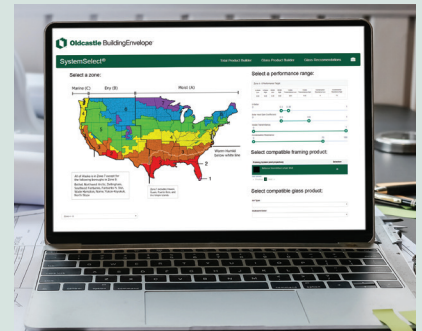
Supports Red List Free goals

Finishes

Factory painted Kynar 500/HYLAR 5000 finishes, meet all provisions of AMMA 2605

Factory-anodized finishing

Dual-finish capability



Simplify your search with SystemSelect™

Compare thermal and visual performance details for entire architectural glass and metal systems quickly with our free online tool.

www.systemselect.obe.com

For more info: Contact your Oldcastle BuildingEnvelope representative, visit us online at OBE.com, or call us at 1-866-OLDCASTLE (653-2278).