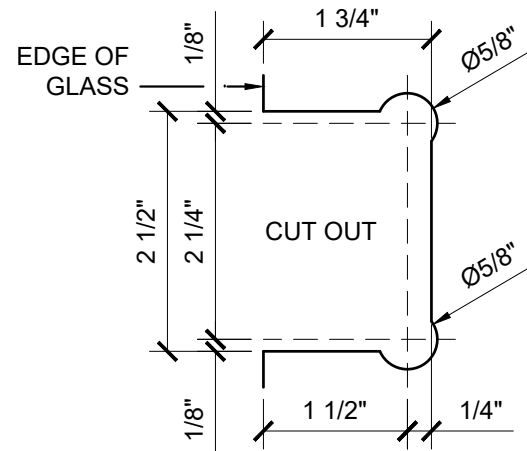
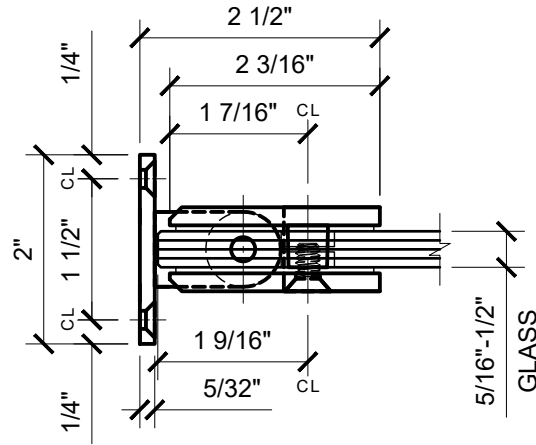


USE OF GASKETS

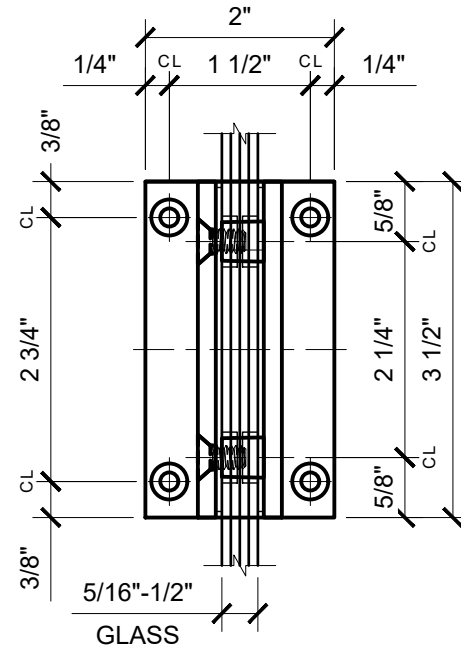
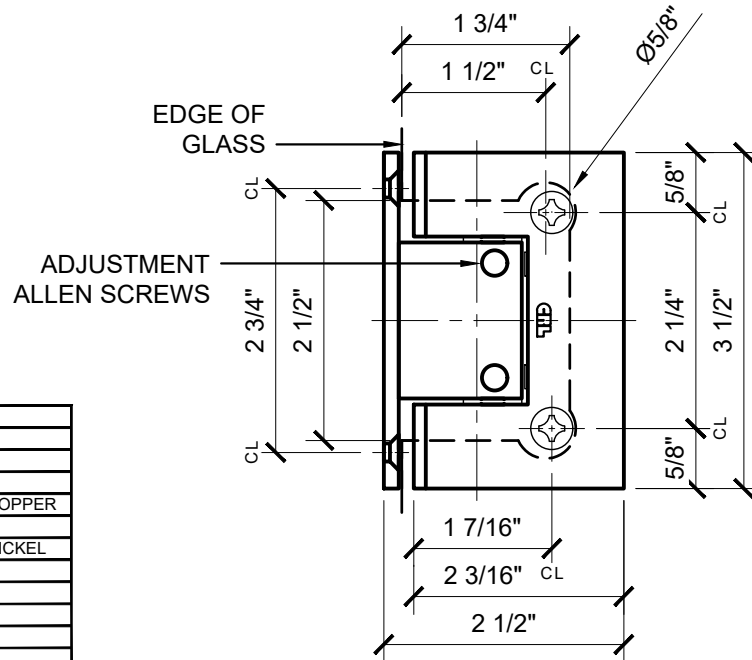
FOR 5/16" (8mm) GLASS: USE ONE THICK GASKET ON EACH SIDE

FOR 3/8" (10mm) GLASS: USE ONE THICK GASKET ON EACH SIDE

FOR 1/2" (12mm) GLASS: USE ONE THIN GASKET ON EACH SIDE



GLASS FABRICATION TEMPLATE



CATALOG NUMBER	FINISH
GEN337CH	CHROME
GEN337BR	BRASS
GEN337ORB	OIL RUBBED BRONZE
GEN337ABC0	ANTIQUÉ BRUSHED COPPER
GEN337ABL	ALL BLACK
GEN337ABN	ANTIQUÉ BRUSHED NICKEL
GEN337ABR	ANTIQUÉ BRASS
GEN337ABRZ	ANTIQUÉ BRONZE
GEN337AW	ALL WHITE
GEN337BC0	BRUSHED COPPER
GEN337BN	BRUSHED NICKEL
GEN337BSC	BRUSHED SATIN CHROME
GEN337CBA	CHROME W/ BRASS ACCENTS
GEN337GP	GOLD PLATED
GEN337PN	POLISHED NICKEL
GEN337SB	SATIN BRASS
GEN337SC	SATIN CHROME
GEN337SN	SATIN NICKEL

GEN337XX - CRL GENEVA SERIES ADJ. WALL MOUNT FULL BACK PLATE HINGE

DATE: 6/20/17  
SCALE: 6"=1'-0"  
DRAWN BY: VM

DESCRIPTION: CRL GEN337 —  
GENEVA 337 SERIES ADJUSTABLE WALL MOUNT  
FULL BACK PLATE HINGE

C.R. LAURENCE CO. ARCHITECTURAL PRODUCTS  
2503 E. Vernon Avenue, Los Angeles, C.A 90058-1897  
PH (800)-421-6144 FX: 800-587-7501 www.crlaurence.com

