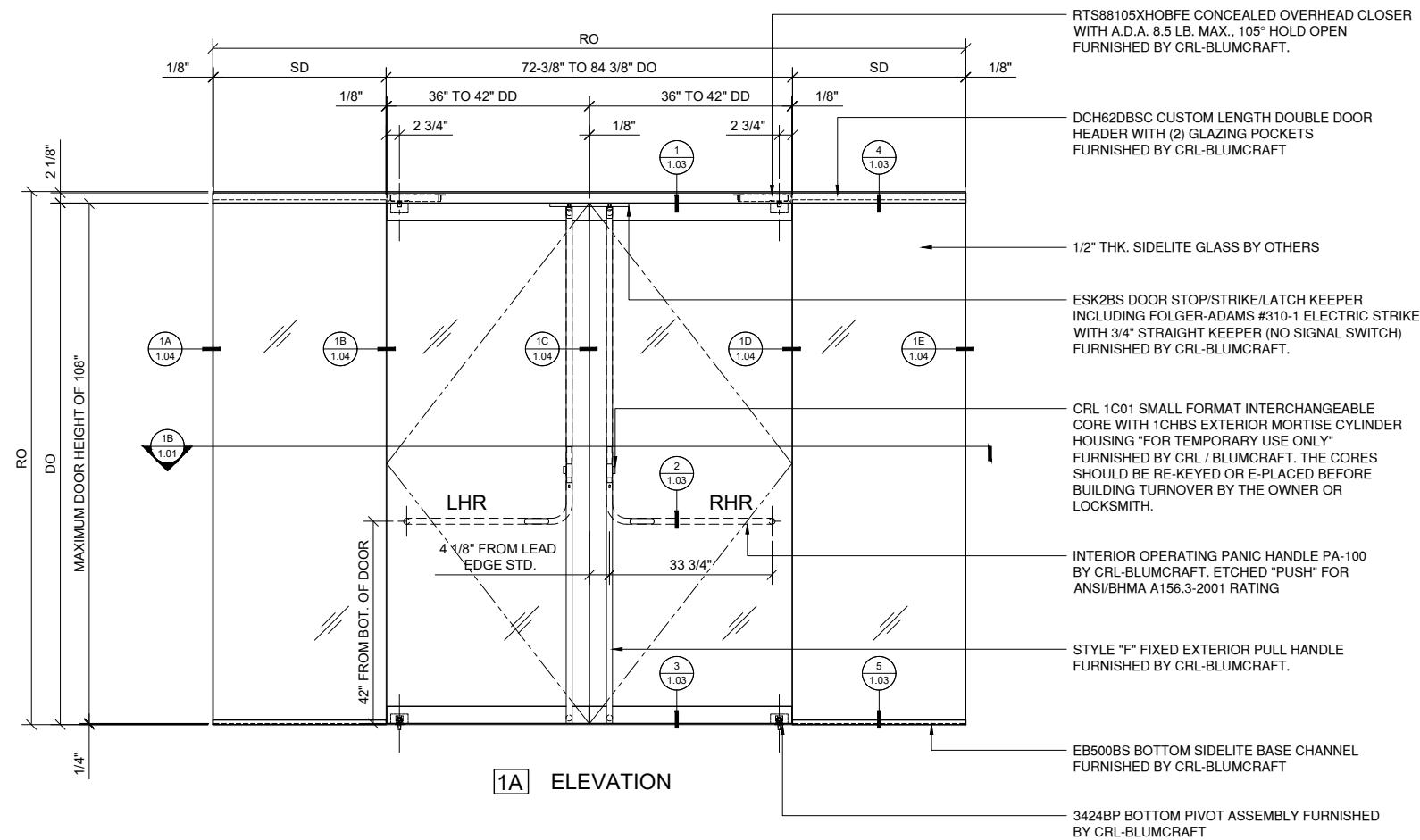


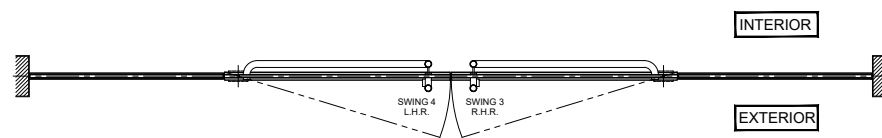


CRL BLUMCRAFT SERIES 150 ENTRANCE SYSTEMS
DOUBLE DOOR AND SIDELITES (WITH CLAD HEADERS & SILLS)



- * FULLY GLAZED WITH 1/2", 5/8" OR 3/4" (12,16 OR 19MM) TEMPERED GLASS IN CLEAR, TINTED OR LOW-IRON
- * COMPLETE WITH EGRESS HANDLE IF REQUIRED
- *150 AND 250 SERIES DOORS HAVE A SOLID ALUMINUM NARROW PROFILE RAIL DESIGN WHICH CAN BE USED TOP OR BOTTOM.
- * SATIN ANODIZED, BLACK BRONZE ANODIZED, BLACK POWDER COAT, BRUSHED AND POLISHED STAINLESS STEEL, AND POLISHED BRASS FINISHES AVAILABLE
- * CUSTOM FINISHES AVAILABLE
- * HEADERS COMPATIBLE WITH OVERHEAD CONCEALED CLOSER AND CUSTOM BOTTOM PIVOT
- * FULLY GLAZED SIDELITES TO MATCH SERIES 150 AND 250 SERIES DOORS ARE AVAILABLE
- *HERCULITE + STYLE DOORS

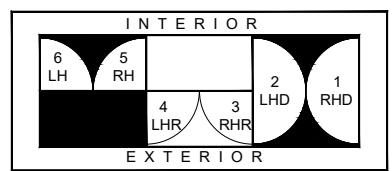
- RTS88105XHOBFE CONCEALED OVERHEAD CLOSER WITH A.D.A. 8.5 LB. MAX., 105° HOLD OPEN FURNISHED BY CRL-BLUMCRAFT.
- DCH62DBSC CUSTOM LENGTH DOUBLE DOOR HEADER WITH (2) GLAZING POCKETS FURNISHED BY CRL-BLUMCRAFT
- 1/2" THK. SIDELITE GLASS BY OTHERS
- ESK2BS DOOR STOP/STRIKE/LATCH KEEPER INCLUDING FOLGER-ADAMS #310-1 ELECTRIC STRIKE WITH 3/4" STRAIGHT KEEPER (NO SIGNAL SWITCH) FURNISHED BY CRL-BLUMCRAFT.
- CRL 1C01 SMALL FORMAT INTERCHANGEABLE CORE WITH 1CHBS EXTERIOR MORTISE CYLINDER HOUSING "FOR TEMPORARY USE ONLY" FURNISHED BY CRL / BLUMCRAFT. THE CORES SHOULD BE RE-KEYED OR E-PLACED BEFORE BUILDING TURNOVER BY THE OWNER OR LOCKSMITH.
- INTERIOR OPERATING PANIC HANDLE PA-100 BY CRL-BLUMCRAFT. ETCHED "PUSH" FOR ANSI/BHMA A156.3-2001 RATING
- STYLE "F" FIXED EXTERIOR PULL HANDLE FURNISHED BY CRL-BLUMCRAFT.
- EB500BS BOTTOM SIDELITE BASE CHANNEL FURNISHED BY CRL-BLUMCRAFT
- 3424BP BOTTOM PIVOT ASSEMBLY FURNISHED BY CRL-BLUMCRAFT



1B PLAN VIEW

STRUCTURAL DISCLAIMER:
ALL CUSTOMERS WHO IN ANY WAY UTILIZE THIS PRODUCT ARE SOLELY RESPONSIBLE TO CONSULT A STRUCTURAL ENGINEER TO DETERMINE THE SUITABILITY OF THE PRODUCT FOR THE INTENDED USE AND SITE CONDITIONS. ALL INSTALLERS MUST BE QUALIFIED AND HAVE PROFESSIONAL KNOWLEDGE ABOUT COMPLIANCE WITH LOCAL, STATE AND FEDERAL REGULATIONS, SAFETY FACTORS, AND THE APPROPRIATE CHOICE OF FIXING MATERIAL AND PROCEDURES.

1 DOUBLE DOOR W/ SIDELITE: PA100F PANIC HANDLES
3/4" = 1'-0"



STANDARD ABBREVIATIONS	
RO	ROUGH OPENING
FD	FRAME DIMENSION
DLO	DAYLIGHT OPENING
DO	DOOR OPENING
DD	DOOR DIMENSION
TD	TRANSOM DIMENSION
SD	SIDELITE DIMENSION
SMC	SURFACE MOUNTED CLOSER
OHCC	OVERHEAD CONCEALED CLOSER
FIBO	FURNISHED & INSTALLED BY OTHERS

Revisions By:

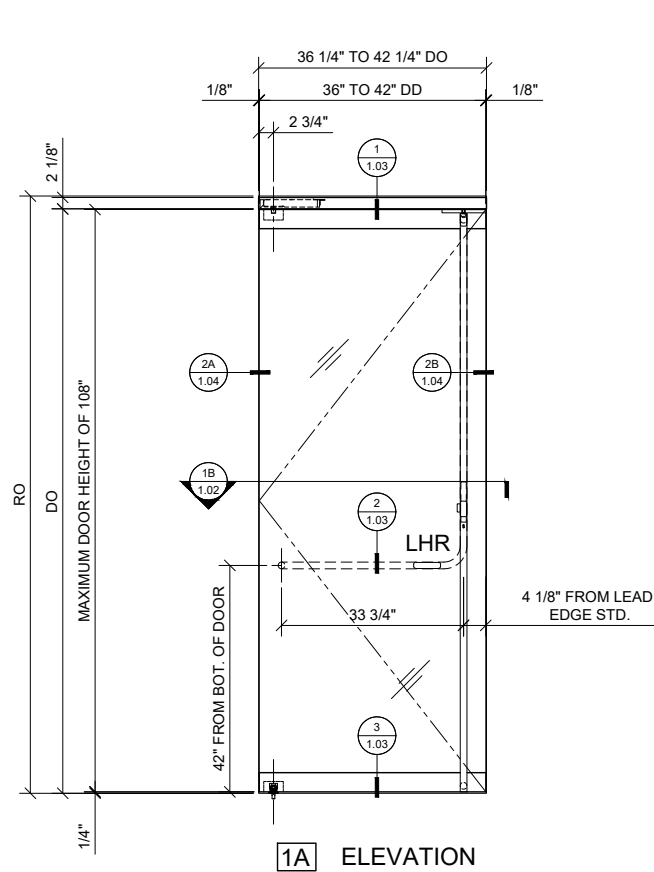
C.R. LAURENCE CO. ARCHITECTURAL PRODUCTS
2503 E. Vernon Avenue, Los Angeles, CA 90058-1897
PH (800)-421-6144 FX: 800-587-7501 www.crlaurence.com

Description:
CRL / BLUMCRAFT 150
SRS ENTRANCE SYSTEM
WITH 1/2", 5/8" & 3/4"
GLASS

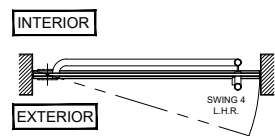
Drawn By: RPD
Date: 04/23/19
Scale: AS NOTED
File Name: BC_150_SRS_Entrance_Sys.dwg
Sheet
1.01



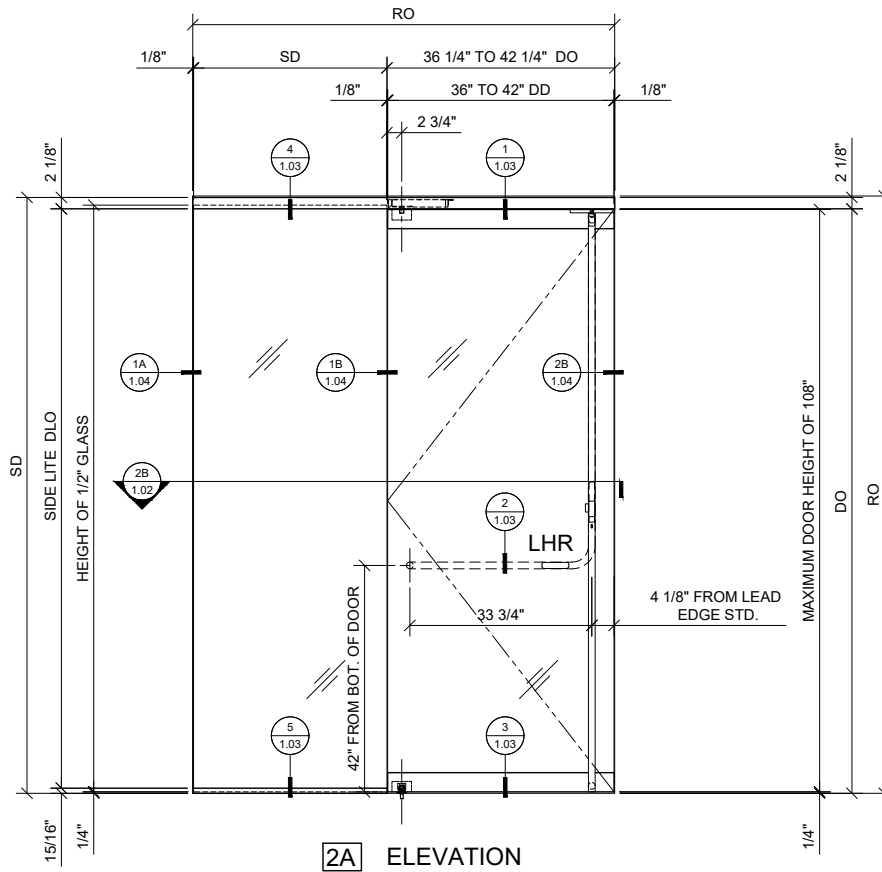
CRL BLUMCRAFT SERIES 150 ENTRANCE SYSTEMS
SINGLE DOOR AND SIDELITES (WITH CLAD HEADERS & SILLS)



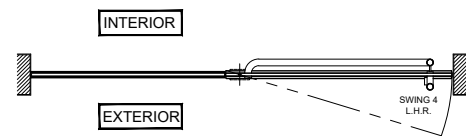
1A ELEVATION



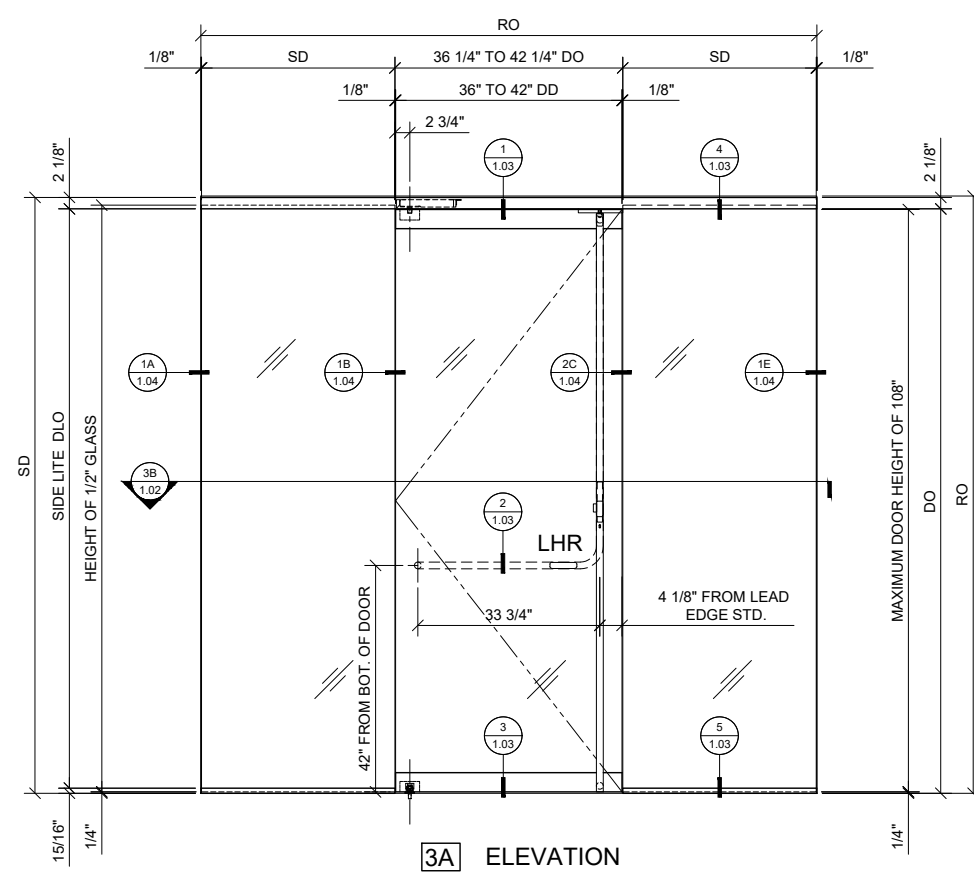
1B PLAN VIEW



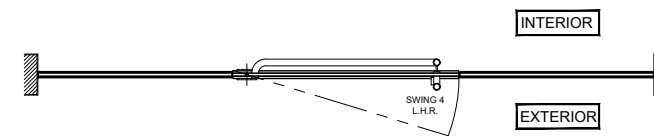
2A ELEVATION



2B PLAN VIEW



3A ELEVATION



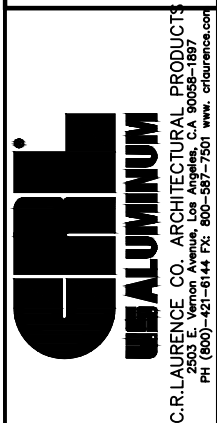
3B PLAN VIEW

1 SINGLE DOOR - NO SIDELITE:
 PA100F PANIC HANDLE
 3/4" = 1'-0" ARCH. REF.: N/A

2 SINGLE DOOR W/ SIDELITE:
 PA100F PANIC HANDLE
 3/4" = 1'-0"

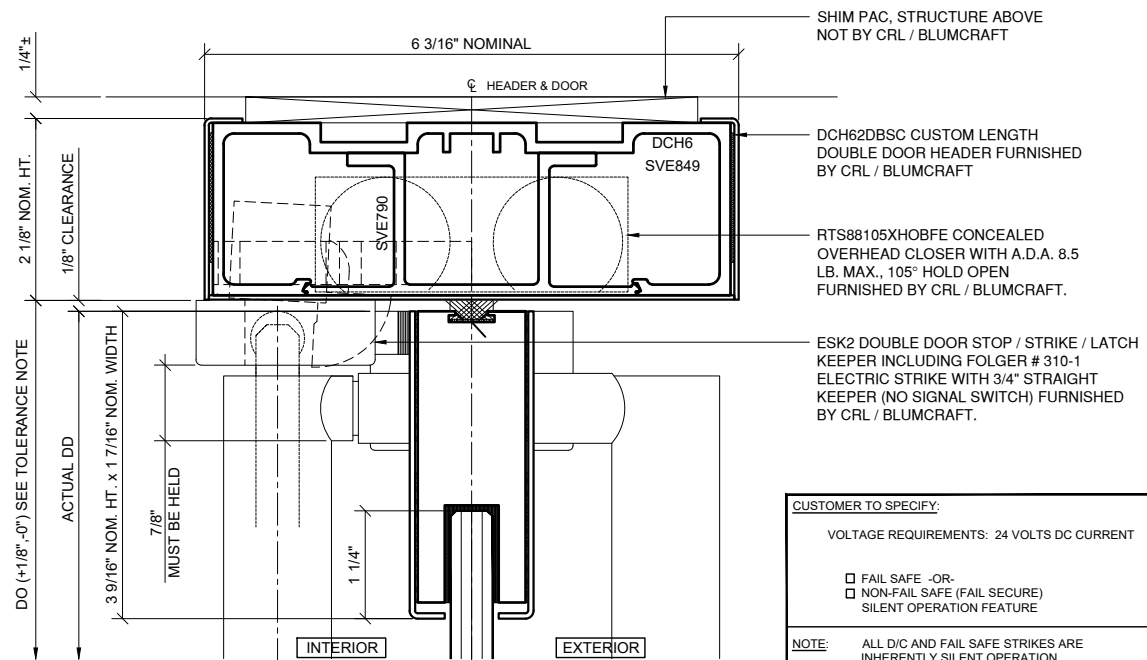
3 SINGLE DOOR W/ SIDELITES:
 PA100F PANIC HANDLE
 3/4" = 1'-0"

Revisions By:



Description:
 CRL / BLUMCRAFT 150
 SRS ENTRANCE SYSTEM
 WITH 1/2", 5/8" & 5/4"
 GLASS

Drawn By: RPD
 Date: 04/23/19
 Scale: AS NOTED
 File Name:
 BC_150_SRS_Entrance_Sys.dwg



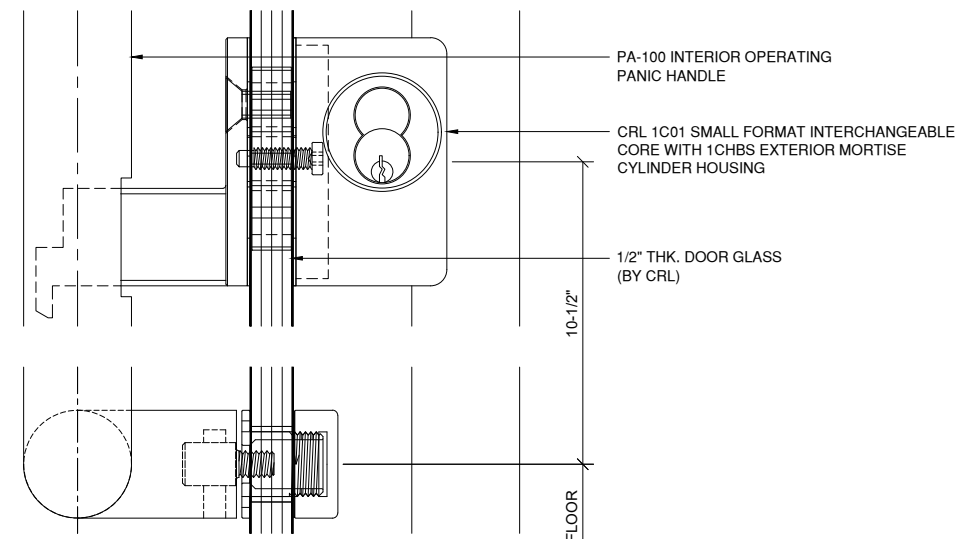
1 SECTION AT DOOR HEAD
ARCH REF: N/A 1'-0"=1'-0"

CUSTOMER TO SPECIFY:
VOLTAGE REQUIREMENTS: 24 VOLTS DC CURRENT

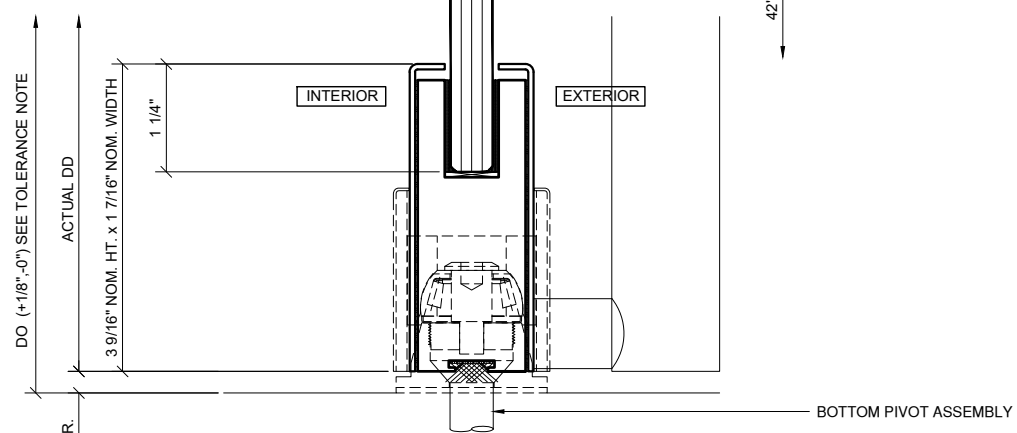
FAIL SAFE -OR-
 NON-FAIL SAFE (FAIL SECURE)
SILENT OPERATION FEATURE

NOTE: ALL DIC AND FAIL SAFE STRIKES ARE INHERENTLY SILENT OPERATION.

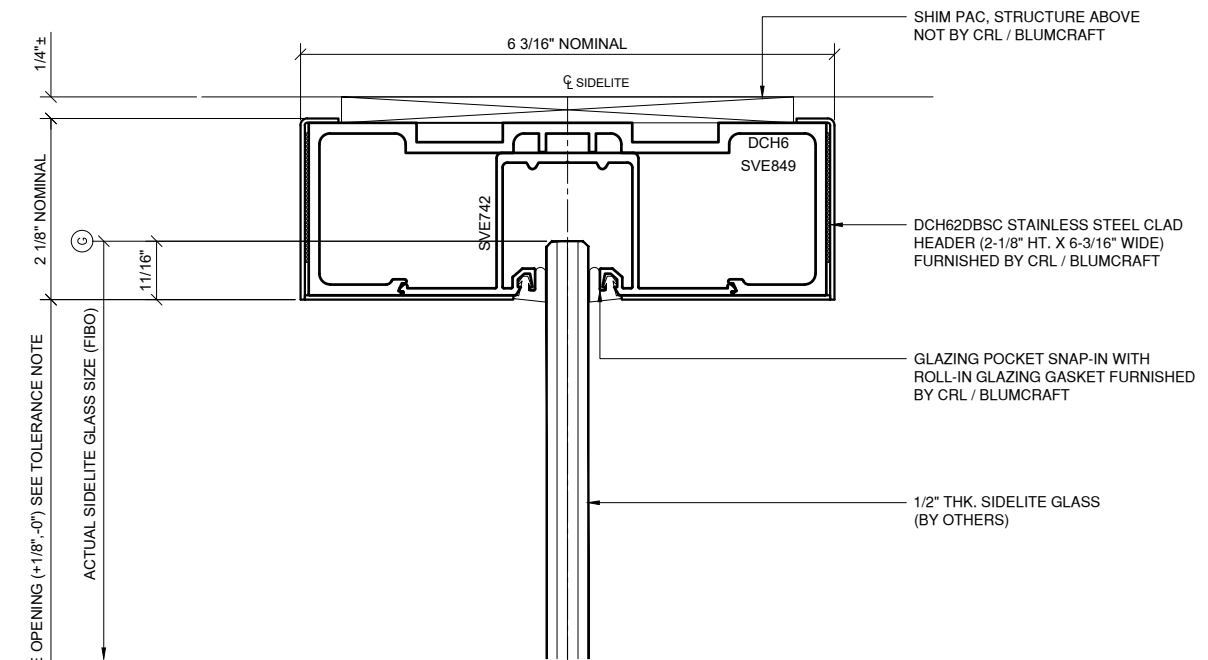
CAUTION: TO PROTECT ELECTRIC STRIKE(S) FROM POWER SPIKES AND ASSIST IN REGULATING A SP2005M3 (SMART PAC III) WILL BE SUPPLIED FOR EACH FAIL SAFE ELECTRIC STRIKE BY CRL / BLUMCRAFT.



2 SECTION AT DOOR PULL
ARCH REF: N/A 1'-0"=1'-0"

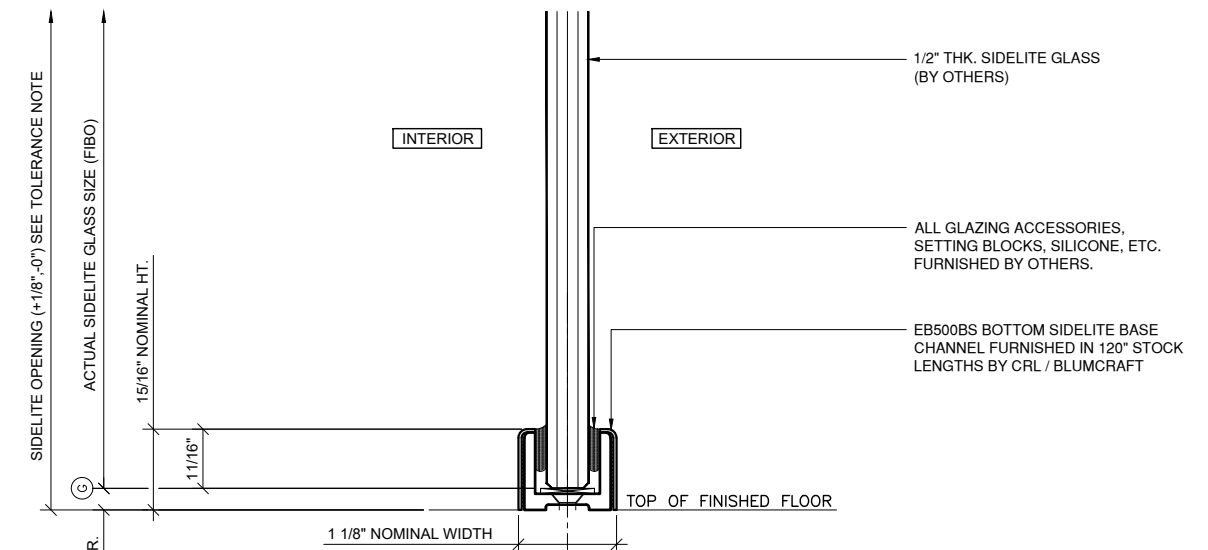


3 SECTION AT DOOR SILL
ARCH REF: N/A 1'-0"=1'-0"



4 SECTION AT SIDELITE HEAD
ARCH REF: N/A 1'-0"=1'-0"

TOLERANCE NOTE:
CEILINGS, FRAMES, OR FLOORS WITHIN THE ENTIRE SWING-ARC OF THE DOOR SHOULD HAVE THE SAME MINIMUM DIMENSIONAL TOLERANCES AS THE DOOR FRAME OPENING TO ASSURE PROPER DOOR FUNCTION.



5 SECTION AT SIDELITE SILL
ARCH REF: N/A 1'-0"=1'-0"

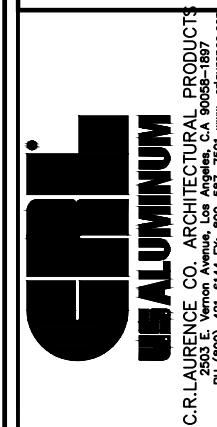
Revisions By:

CRL ALUMINUM
C.R. LAURENCE CO. ARCHITECTURAL PRODUCTS
2503 E. Vernon Avenue, Los Angeles, CA 90058-1897
PH (800)-421-6144 FX: 800-587-7501 www.crlaurence.com

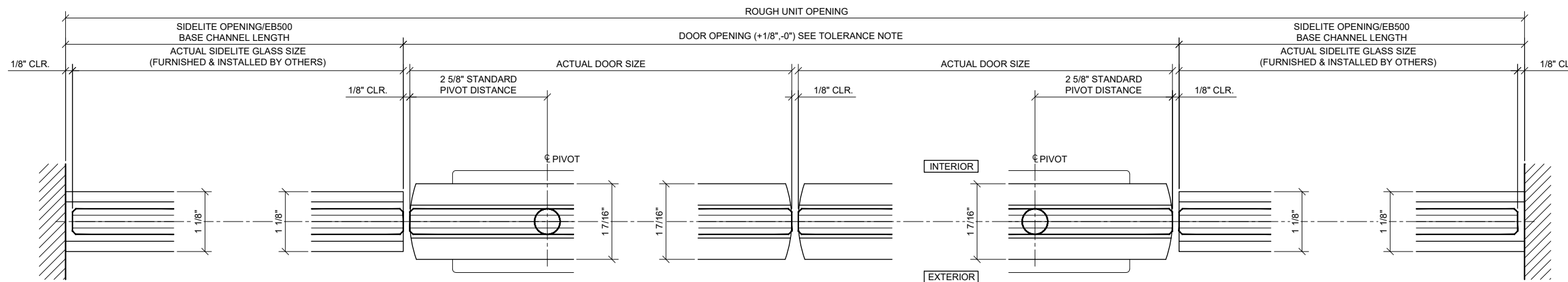
Description:
CRL / BLUMCRAFT 150
SRS ENTRANCE SYSTEM
WITH 1/2", 5/8" & 5/4"
GLASS

Drawn By: RPD
Date: 04/23/19
Scale: AS NOTED
File Name: BC_150_SRS_Entrance_Sys.dwg

Revisions By:



C.R. LAURENCE CO. ARCHITECTURAL PRODUCTS
 2503 E. Vernon Avenue, Los Angeles, CA 90058-1897
 PH (800)-421-6144 FX 800-587-7501 www.crlaurence.com



1A PLAN: WALL TO SIDE LITE

1B PLAN: SIDELITE TO DOOR

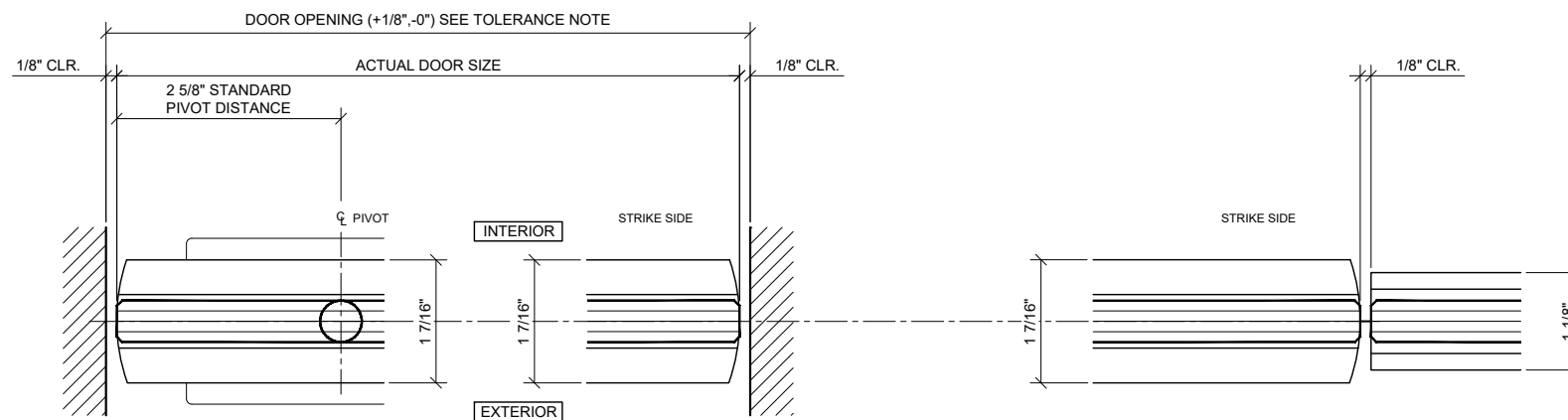
1C PLAN: MEETING STILE

1D PLAN: DOOR TO SIDELITE

1E PLAN: SIDELITE TO WALL

1 SECTIONS AT DOOR / SIDELITE / WALL

ARCH REF: N/A 1'-0"=1'-0"



2A PLAN: WALL TO DOOR

2B PLAN: DOOR TO WALL

2C PLAN: DOOR TO SIDELITE

2 SECTIONS AT DOOR / SIDELITE / WALL

ARCH REF: N/A 1'-0"=1'-0"

Description:
 CRL / BLUMCRAFT 150
 SRS ENTRANCE SYSTEM
 WITH 1/2", 5/8" & 5/4"
 GLASS

Drawn By: RPD

Date: 04/23/19

Scale: AS NOTED

File Name:

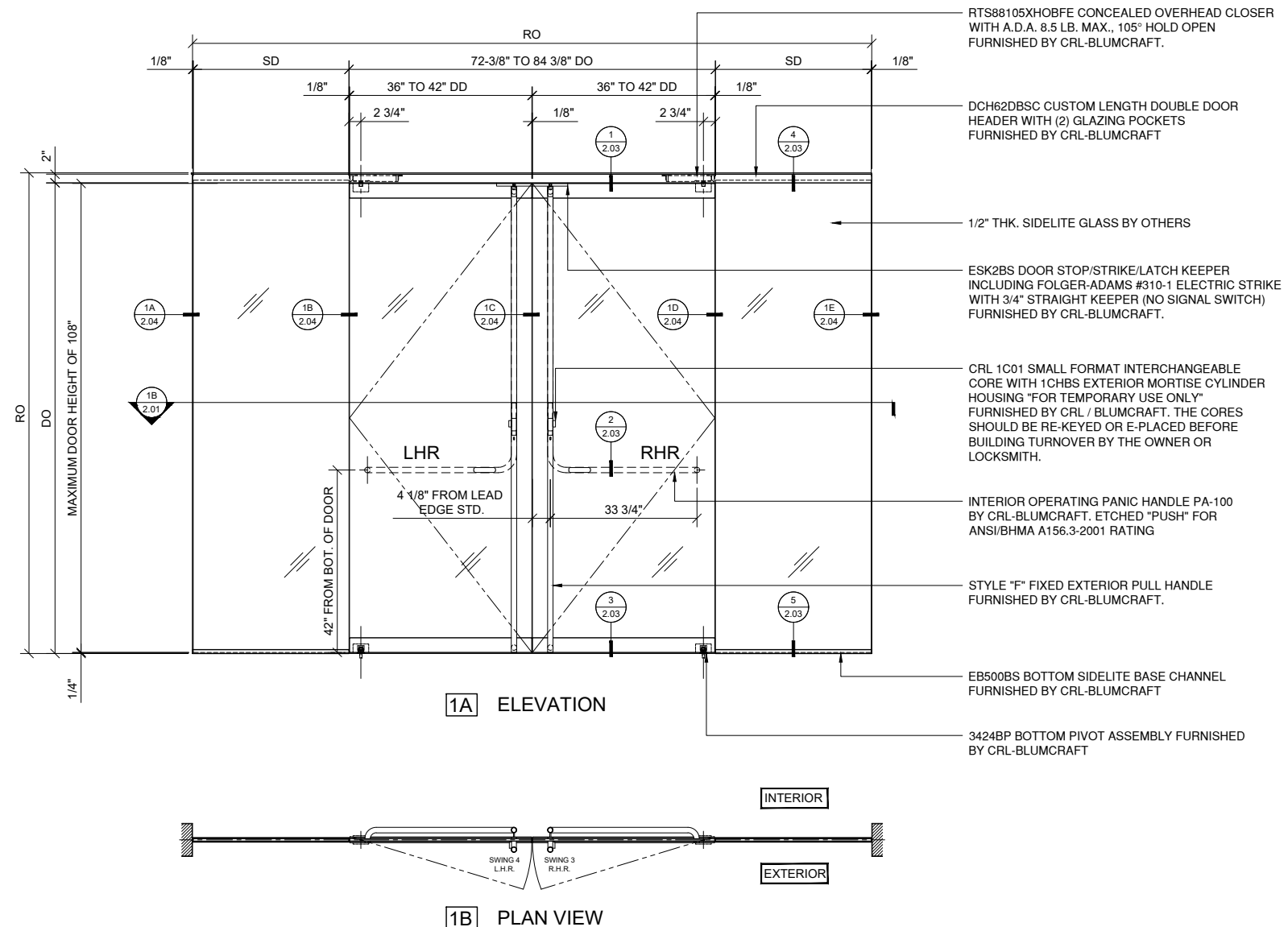
BC_150_SRS_Entrance_Sys.dwg

Sheet

1.04



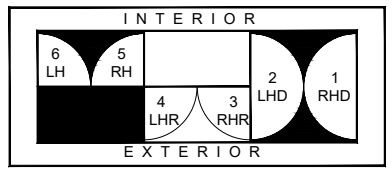
CRL BLUMCRAFT SERIES 150 ENTRANCE SYSTEMS
DOUBLE DOOR AND SIDELITES (WITH NON-CLAD HEADERS & SILLS)



- * FULLY GLAZED WITH 1/2", 5/8" OR 3/4" (12,16 OR 19MM) TEMPERED GLASS IN CLEAR, TINTED OR LOW-IRON
- * COMPLETE WITH EGRESS HANDLE IF REQUIRED
- * 150 AND 250 SERIES DOORS HAVE A SOLID ALUMINUM NARROW PROFILE RAIL DESIGN WHICH CAN BE USED TOP OR BOTTOM.
- * SATIN ANODIZED, BLACK BRONZE ANODIZED, BLACK POWDER COAT, BRUSHED AND POLISHED STAINLESS STEEL, AND POLISHED BRASS FINISHES AVAILABLE
- * CUSTOM FINISHES AVAILABLE
- * HEADERS COMPATIBLE WITH OVERHEAD CONCEALED CLOSER AND CUSTOM BOTTOM PIVOT
- * FULLY GLAZED SIDELITES TO MATCH SERIES 150 AND 250 SERIES DOORS ARE AVAILABLE
- *HERCULITE + STYLE DOORS

STRUCTURAL DISCLAIMER:
 ALL CUSTOMERS WHO IN ANY WAY UTILIZE THIS PRODUCT ARE SOLELY RESPONSIBLE TO CONSULT A STRUCTURAL ENGINEER TO DETERMINE THE SUITABILITY OF THE PRODUCT FOR THE INTENDED USE AND SITE CONDITIONS. ALL INSTALLERS MUST BE QUALIFIED AND HAVE PROFESSIONAL KNOWLEDGE ABOUT COMPLIANCE WITH LOCAL, STATE AND FEDERAL REGULATIONS, SAFETY FACTORS, AND THE APPROPRIATE CHOICE OF FIXING MATERIAL AND PROCEDURES.

1 DOUBLE DOOR W/ SIDELITE: PA100F PANIC HANDLES
 3/4" = 1'-0"



STANDARD ABBREVIATIONS	
RO	ROUGH OPENING
FD	FRAME DIMENSION
DLO	DAYLIGHT OPENING
DO	DOOR OPENING
DD	DOOR DIMENSION
TD	TRANSOM DIMENSION
SD	SIDELITE DIMENSION
SMC	SURFACE MOUNTED CLOSER
OHCC	OVERHEAD CONCEALED CLOSER
FIBO	FURNISHED & INSTALLED BY OTHERS

Revisions By:

C.R. LAURENCE CO. ARCHITECTURAL PRODUCTS
 2503 E. Vernon Avenue, Los Angeles, CA 90058-1897
 PH (800)-421-6144 FX 800-587-7501 www.crlaurence.com

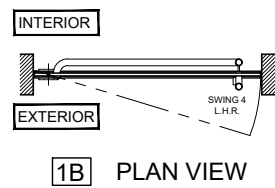
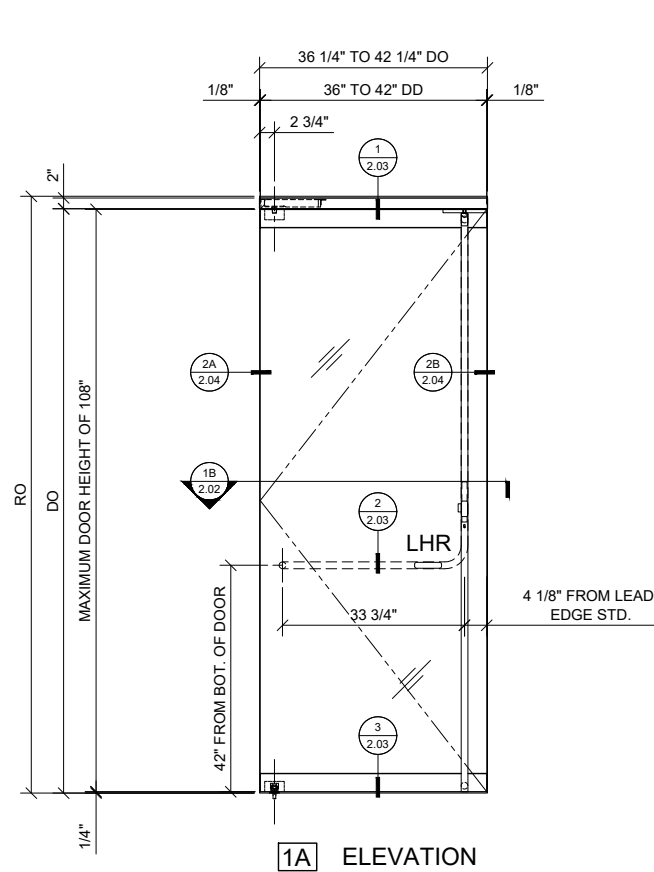
Description:
 CRL / BLUMCRAFT 150
 SRS ENTRANCE SYSTEM
 WITH 1/2", 5/8" & 3/4"
 GLASS

Drawn By: RPD
 Date: 04/23/19
 Scale: AS NOTED
 File Name: BC_150_SRS_Entrance_Sys.dwg

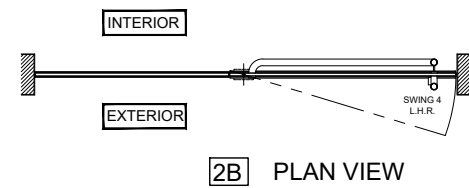
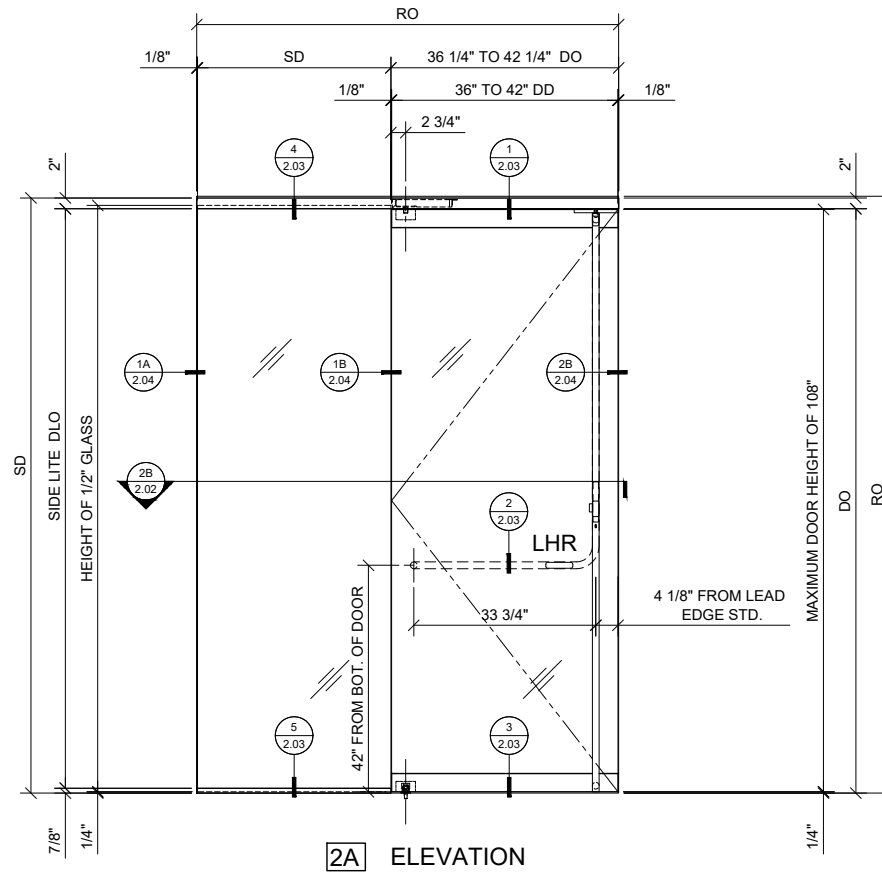
Sheet
2.01



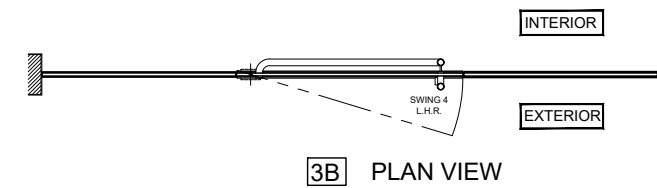
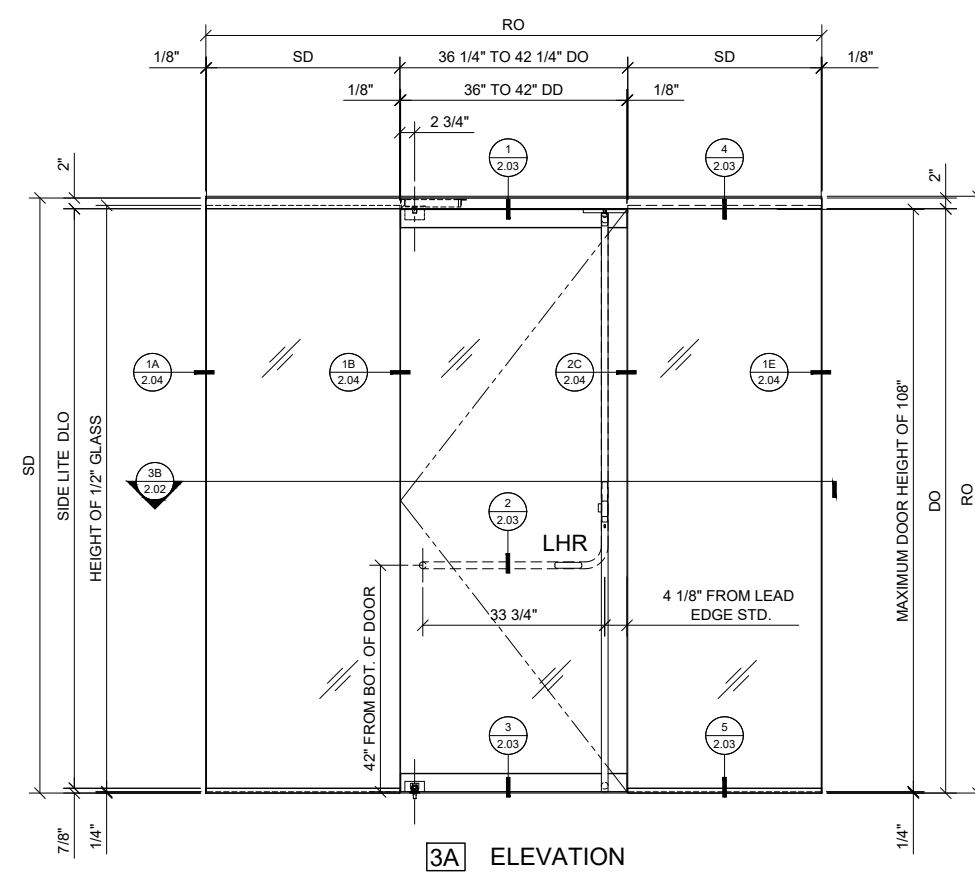
CRL BLUMCRAFT SERIES 150 ENTRANCE SYSTEMS
SINGLE DOOR AND SIDELITES (WITH NON-CLAD HEADERS & SILLS)



1 SINGLE DOOR - NO SIDELITE:
PA100F PANIC HANDLE
3/4" = 1'-0" ARCH. REF.: N/A

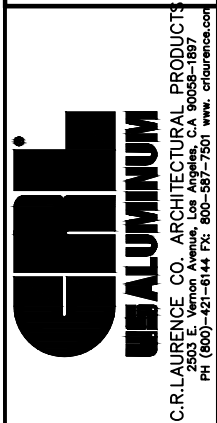


2 SINGLE DOOR W/ SIDELITE:
PA100F PANIC HANDLE
3/4" = 1'-0"



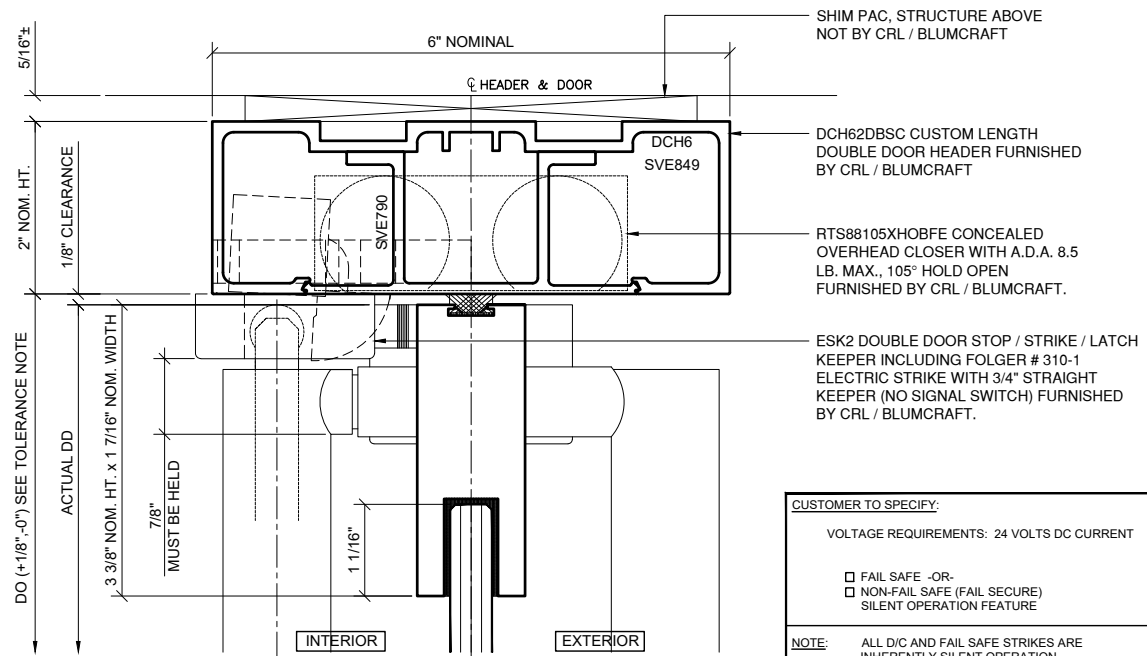
3 SINGLE DOOR W/ SIDELITES:
PA100F PANIC HANDLE
3/4" = 1'-0"

Revisions By:



Description:
CRL / BLUMCRAFT 150
SRS ENTRANCE SYSTEM
WITH 1/2", 5/8" & 5/4"
GLASS

Drawn By: RPD
Date: 04/23/19
Scale: AS NOTED
File Name:
BC_150_SRS_Entrance_Sys.dwg
Sheet
2.02



1 SECTION AT DOOR HEAD
ARCH REF: N/A 1'-0"=1'-0"

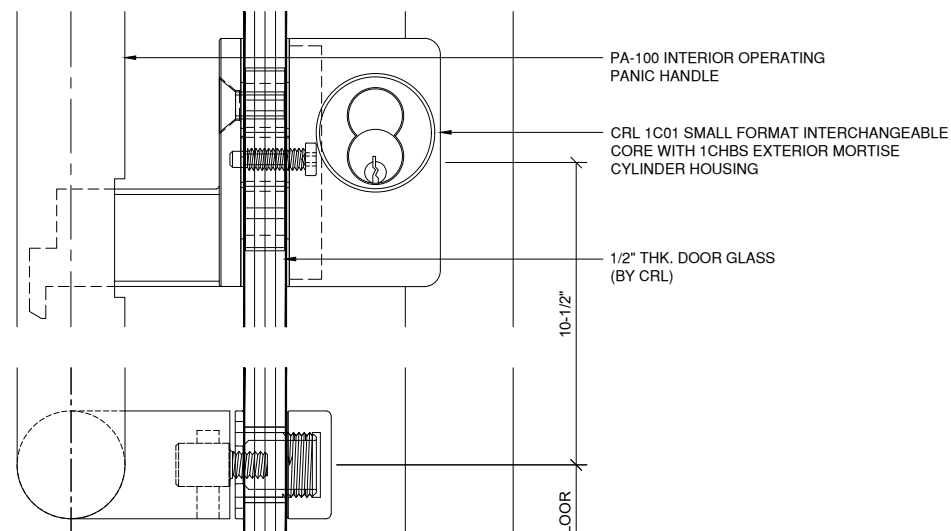
CUSTOMER TO SPECIFY:

VOLTAGE REQUIREMENTS: 24 VOLTS DC CURRENT

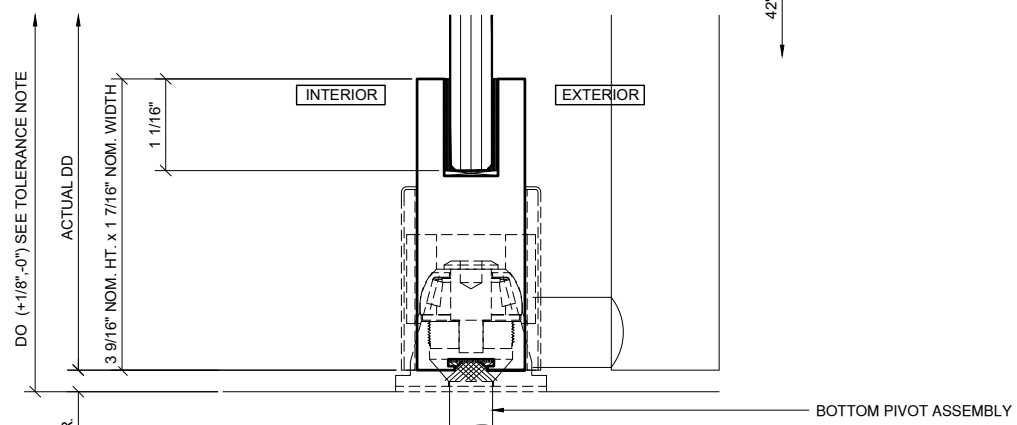
FAIL SAFE -OR-
 NON-FAIL SAFE (FAIL SECURE)
SILENT OPERATION FEATURE

NOTE: ALL DC AND FAIL SAFE STRIKES ARE INHERENTLY SILENT OPERATION.

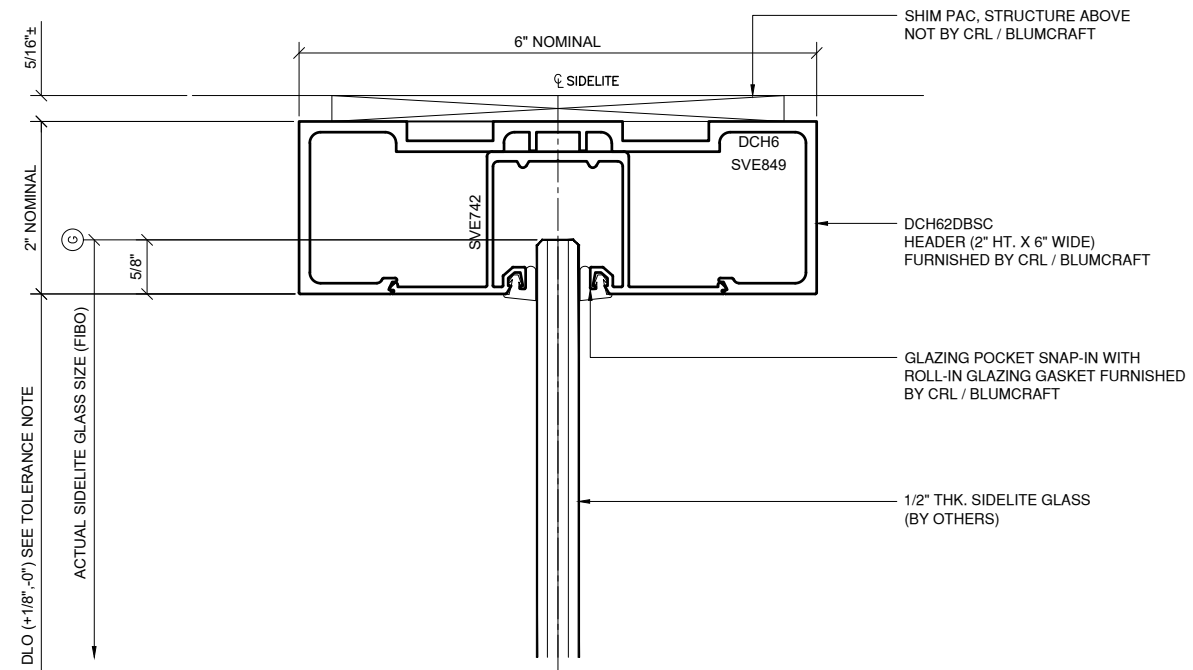
CAUTION: TO PROTECT ELECTRIC STRIKE(S) FROM POWER SPIKES AND ASSIST IN REGULATING A SP2005M3 (SMART PAC III) WILL BE SUPPLIED FOR EACH FAIL SAFE ELECTRIC STRIKE BY CRL / BLUMCRAFT.



2 SECTION AT DOOR PULL
ARCH REF: N/A 1'-0"=1'-0"

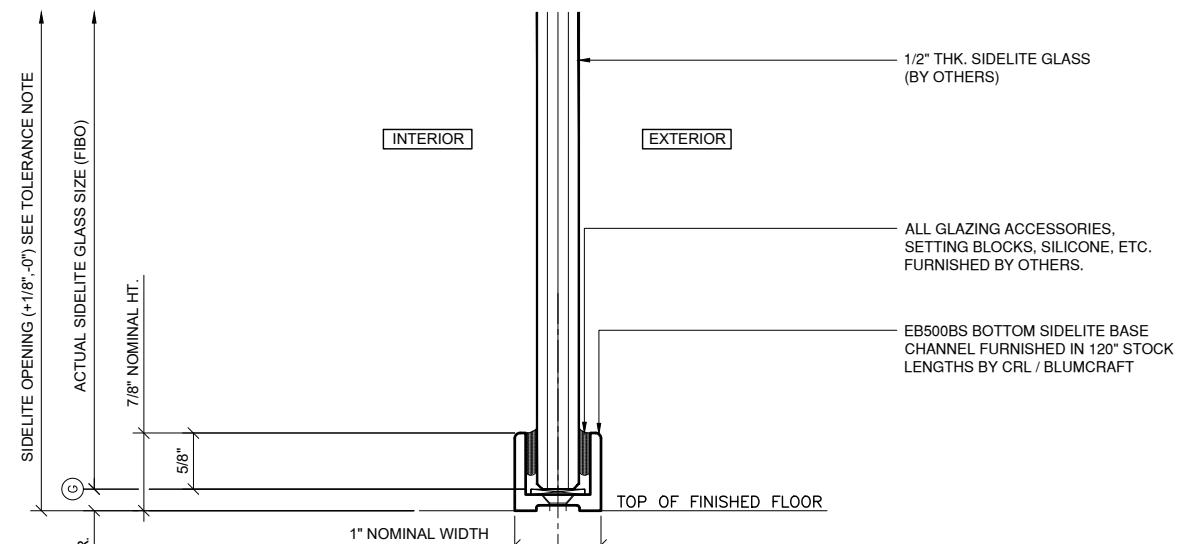


3 SECTION AT DOOR SILL
ARCH REF: N/A 1'-0"=1'-0"



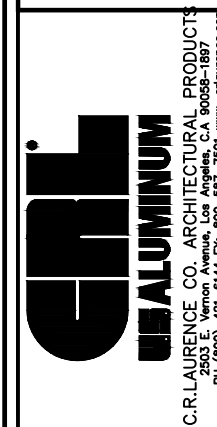
4 SECTION AT SIDELITE HEAD
ARCH REF: N/A 1'-0"=1'-0"

TOLERANCE NOTE:
CEILINGS, FRAMES, OR FLOORS WITHIN THE ENTIRE SWING-ARC OF THE DOOR SHOULD HAVE THE SAME MINIMUM DIMENSIONAL TOLERANCES AS THE DOOR FRAME OPENING TO ASSURE PROPER DOOR FUNCTION.



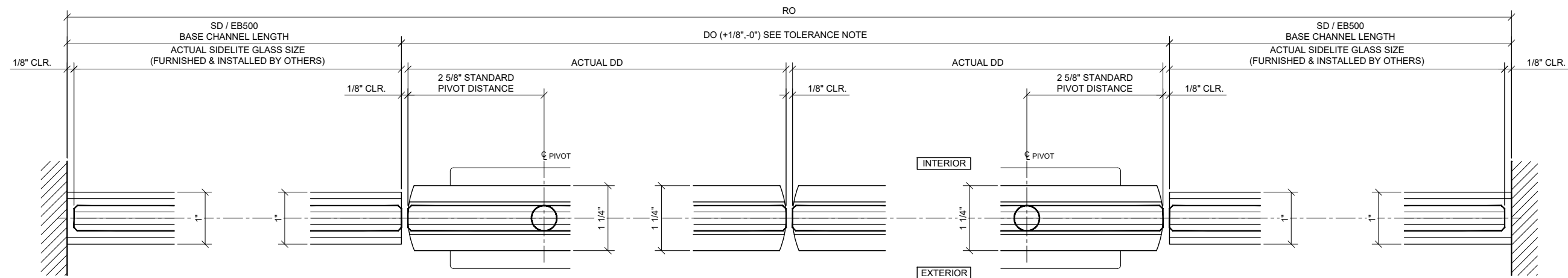
5 SECTION AT SIDELITE SILL
ARCH REF: N/A 1'-0"=1'-0"

Revisions By:



Description:
CRL / BLUMCRAFT 150
SRS ENTRANCE SYSTEM
WITH 1/2", 5/8" & 5/4"
GLASS

Drawn By: RPD
Date: 04/23/19
Scale: AS NOTED
File Name: BC_150_SRS_Entrance_Sys.dwg
Sheet
2.03



1A PLAN: WALL TO SIDE LITE

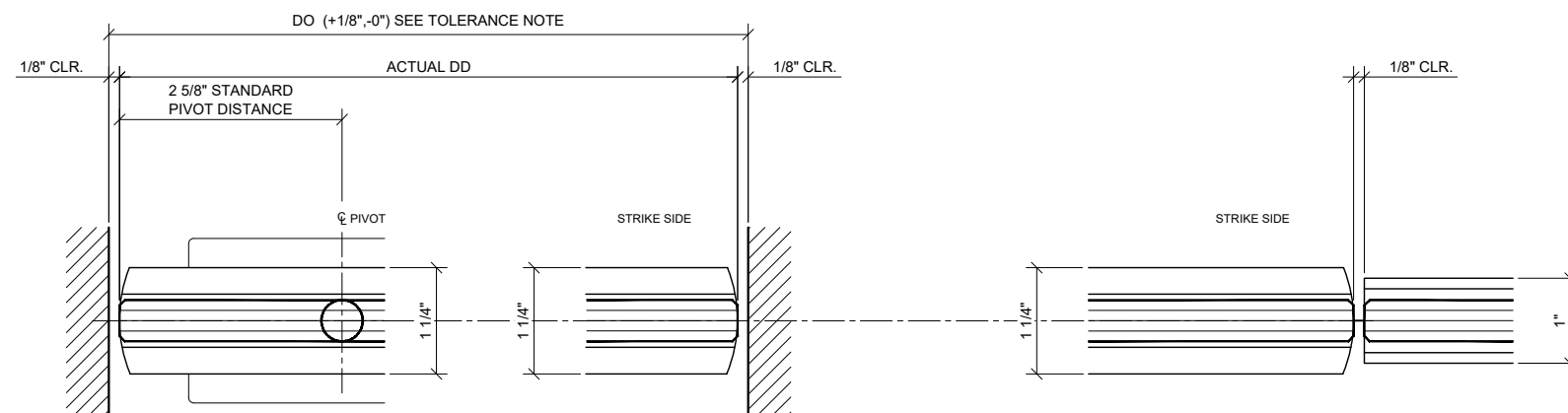
1B PLAN: SIDELITE TO DOOR

1C PLAN: MEETING STILE

1D PLAN: DOOR TO SIDELITE

1E PLAN: SIDELITE TO WALL

1 SECTIONS AT DOOR / SIDELITE / WALL
ARCH REF: N/A 1'-0"=1'-0"



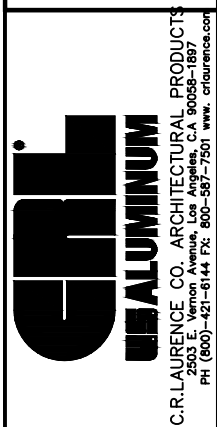
2A PLAN: WALL TO DOOR

2B PLAN: DOOR TO WALL

2C PLAN: DOOR TO SIDELITE

2 SECTIONS AT DOOR / SIDELITE / WALL
ARCH REF: N/A 1'-0"=1'-0"

Revisions By:



Description:
CRL / BLUMCRAFT 150
SRS ENTRANCE SYSTEM
WITH 1/2", 5/8" & 5/4"
GLASS

Drawn By: RPD
Date: 04/23/19
Scale: AS NOTED
File Name:
BC_150_SRS_Entrance_Sys.dwg