

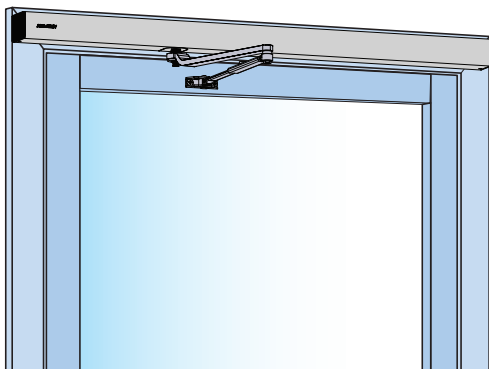
# Owner's Manual

## Swing Door Operator

### ASSA ABLOY SW60

**ASSA ABLOY**  
Entrance Systems

Experience a safer  
and more open world



# CONTENTS - Original instructions

Instructions for safe operation .....	3
Congratulations on your new automatic door .....	4
Electronic equipment reception interference .....	4
Environmental requirements .....	4
Product liability .....	4
Warranty .....	5
Service .....	5
Intended use .....	6
Technical specification .....	6
How the ASSA ABLOY SW60 works .....	6
App .....	6
Door mode functionality .....	11
Modes and functions on app .....	11
Regular safety checks .....	14
General accessories .....	17
Safety accessories .....	17
Troubleshooting .....	17
Service/Maintenance .....	18
Other products from ASSA ABLOY Entrance Systems .....	18

ASSA ABLOY as word and logo are trademarks owned by the ASSA ABLOY Group

© ASSA ABLOY Entrance Systems, 2021

*Technical data subject to change without notice.*

Backtrack information: folder:Workspace Main, version:a637, Date:2021-02-03 time:11:19:02, state: Frozen

## Instructions for safe operation



- Failure to observe the information in this manual may result in personal injury or damage to equipment.
- To reduce the risk of injury to persons - use this operator with single swinging only.
- Do not use the equipment if repair or adjustment is necessary.
- Disconnect supply power when cleaning or other maintenance is to be carried out.
- The operator can be used by children only when supervised by a person responsible for their safety.
- The operator can be used by persons with impaired physical, sensory or mental capacity if they have been instructed by a person in charge of their safety.
- Cleaning and user maintenance shall not be made by children.
- Do not let anyone climb on or play with the door or the fixed/remote controls.
- The doorset can be operated automatically or manually by activators. It can also be used manually as a door closer.

## Congratulations on your new automatic door

ASSA ABLOY Entrance Systems has developed automatic doors for more than 50 years. State-of-the-art technology and carefully tested materials and components provide you with a superior product.

As with all other technical products, your automatic door requires periodic maintenance and service. It is essential that you know your automatic door (system) and that you recognize the importance of maintaining it in compliance with applicable standards for safety.

Your local ASSA ABLOY Entrance Systems-authorized representative is familiar with these standards, as well as applicable local codes and ASSA ABLOY Entrance Systems recommendations for power-operated pedestrian doors. Service and adjustments performed by your ASSA ABLOY Entrance Systems-authorized representative, will ensure safe and proper operation of your automatic door unit.

## Electronic equipment reception interference

The equipment may generate and use radio frequency energy and if not installed and used properly, it may cause interference to radio, television reception or other radio frequency type systems.

If other equipment does not fully comply with immunity requirements, interference may occur.

There is no guarantee that interference will not occur in a particular installation. If this equipment does cause interference to radio or television reception, which can be determined by turning the equipment off and on, the user is encouraged to try to correct the interference by one or more of the following measures:

- Re-orient the receiving antenna.
- Relocate the receiver with respect to the equipment.
- Move the receiver away from the equipment.
- Plug the receiver into a different outlet so that equipment and receiver are on different branch circuits.
- Check that protective earth (PE) is connected.

If necessary, the user should consult the dealer or an experienced electronics technician for additional suggestions.

## Environmental requirements

ASSA ABLOY Entrance Systems products are equipped with electronics and may also be equipped with batteries containing materials which are hazardous to the environment. Disconnect power before removing electronics and battery and make sure it is disposed of properly according to local regulations (how and where) as was done with the packaging material.

## Product liability

According to regulations, the following are the responsibility of the owner or caretaker of the equipment

- that the equipment operates correctly, so that it gives sufficient protection in regard to safety and health
- that the equipment is operated and regularly maintained, inspected and serviced by someone with documented competence in the equipment and in applicable regulations
- that inspection covers the emergency opening function (when applicable)
- that the closing force is appropriate for the door size on fire-approved door systems (when applicable).

# Warranty

ASSA ABLOY Entrance Systems warrants its products to be free from defects in material and workmanship under intended use and service for a warranty time of 12 months, beginning at time of delivery. This warranty extends only to the original buyer of the equipment.

ASSA ABLOY Entrance Systems warrants that the software will operate substantially in accordance with its functional descriptions and that it has been recorded on non-defective media.

The ASSA ABLOY Entrance Systems warranty does not apply to

- That the software will be error-free or operate without interruption
- General wear and tear on the system
- Fuse, disposable batteries and glass damage
- System deviations caused by installer other than ASSA ABLOY Entrance Systems
- System that has been altered or damaged by vandalism or misuse
- System that has been additionally equipped with non-ASSA ABLOY Entrance Systems original branded parts and/or spare parts
- Unrequired visits due to poor client communication (door working when our technician arrives, reset, power discontinuation)
- Adjustments (closing and opening speed and also detection field radars) due to customer requests (excludes operational adjustments thought to create a hazard)
- Water damage
- Adverse weather conditions
- Any damage caused, directly or indirectly, by a circumstance beyond the control of the applicable company within ASSA ABLOY Entrance Systems, such as industrial dispute, fire, natural disaster, war, extensive military mobilization, insurrection, requisition, seizure, embargo, restrictions in the use of power and defects or delays in deliveries by sub-contractors caused by any such circumstances

Please note:

- Non-compliance with manufacturers care and maintenance recommendations may void the warranty.
- ASSA ABLOY Entrance Systems-authorized resellers shall extend this warranty to end-users only, but have no authority to extend a greater or different warranty on behalf of ASSA ABLOY Entrance Systems.
- A service agreement with ASSA ABLOY Entrance Systems will help secure the availability of a fully operational system and will give priority at call-out, thus minimizing the time that the equipment is unusable.

# Service

Inspections should be done regularly by a trained and qualified person. The frequency of these inspections should be according to national regulations (or according to industry standard if there are no national regulations). This is especially important when the installation concerns a fire-approved door or a door with an emergency-opening function. To extend the life of your investment and ensure safe and reliable operation of the door, we recommend a minimum of 2 visits per year or more, depending on usage and operating conditions. Environmental aspects shall also be considered.

As your entrances are part of your business flow, there's every reason to keep them working well. ASSA ABLOY Entrance Systems offers you a maintenance and modernization expertise to rely on. Our Maintenance Programs and Modernization Services for entrance automation is backed by a extensive expertise for all types of pedestrian- and industrial door and docking systems, independent of brand. At your disposal is a team of dedicated expert technicians, proven through decades of maintenance, service and satisfied customers.

## Intended use

The ASSA ABLOY SW60 is an automatic swing door operator developed to make life easier for everyone who can benefit from automatic doors. The ASSA ABLOY SW60 is a low-energy operator using a DC motor and a gear-reduction system to drive an arm system, which opens the door. It is to be installed on the interior swing doors. This widely-used operator can be found in applications in health care, office and public buildings.

The door is designed to offer continuous use, a high degree of safety and maximum lifetime. The system is self-adjusting to the effects caused by normal variations in the weather conditions and to minor friction changes caused by e.g. dust and dirt.

For escape in emergency situations the doorset is opened manually.

Make sure that the connection to the source of supply by a flexible cord shall not be allowed to become entrapped in moving parts of the operator or door system.

**The glazing material in unframed swinging doors and/or framed swinging doors except that glazing material is less than 1 ft<sup>2</sup> (0.9 m<sup>2</sup>) and having no dimension greater than 18" (457 mm) shall be comply with the requirements of ANSI Z97.1.**

Please use the adaptor provided with the operator in the packaging, other adaptor may result in risk of fire.

For installation and maintenance see Installation and Service manual 1020004.

## Technical specification

Manufacturer:	ASSA ABLOY Entrance Systems
Address:	1900 Airport Road, Monroe, NC 28110, US
Type:	ASSA ABLOY SW60
Mains power supply:	120 V AC +10/-15%, 50/60 Hz
Power consumption:	Max. 90 W
Degree of protection:	IP20
Standards:	The ASSA ABLOY SW60 complies with ANSI/BHMA A156.19.

## How the ASSA ABLOY SW60 works

The swing door operator ASSA ABLOY SW60 uses a DC motor and a gear-reduction system to drive an arm system which opens the door. Closing power is provided by a motor and a closing spring. A highly sophisticated electronic control unit uses a motor encoder and a microprocessor to control the door's movement.

To activate the operator you can use wall or jamb-mounted contact switches or activate through the app. It is also possible – where local standards allow – to activate the operator by just pushing the door, if "Push and go" is active.

After the door has been activated it will open and stay in the open position for a specified "Hold open time". When "Hold open time" has elapsed the door will close.

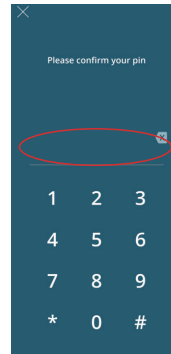
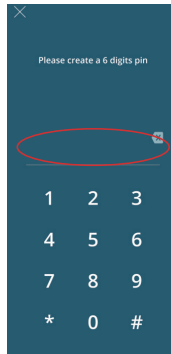
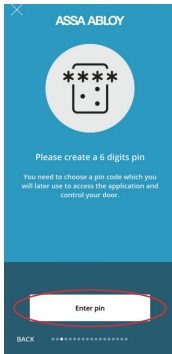
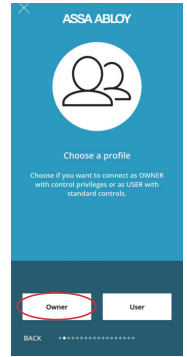
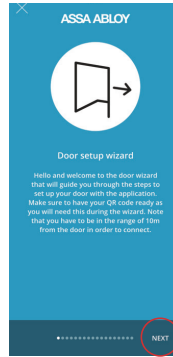
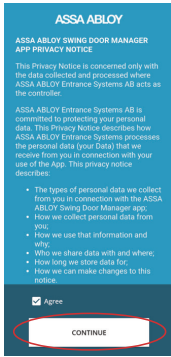
## App

# 1 Install the app

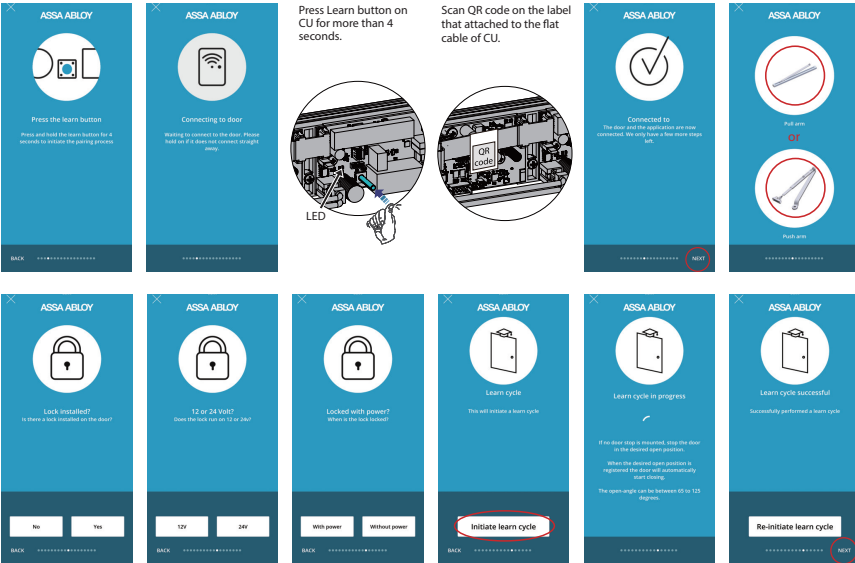
Download the ASSA ABLOY Swing Door Manager app from the **Google Play** or **App Store**.



# 2 Log in to the app with owner



### 3 Learn



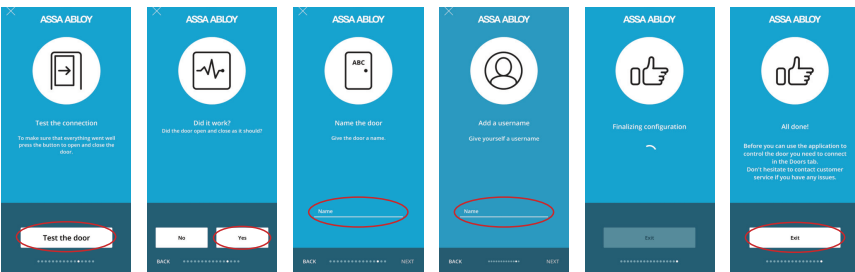
**Note:** If any issues with learning or could not connect to the door after learning, please check the connectin of mains power, installation of the unit or the arm system, then restart learning again.

**Note:** If any of the parameters SPRING PRE-TENSION are changed after performing a learn, a new learn must be carried out.



The back-check will be automatically adjusted to 10° and 1 second before open position. The latch-check will be automatically adjusted to 10° and 1.5 seconds before closed position.

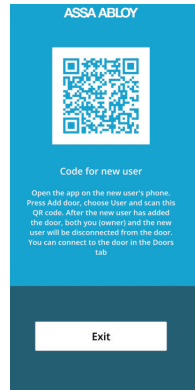
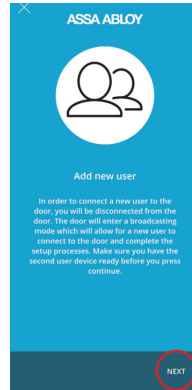
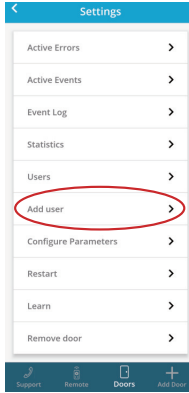
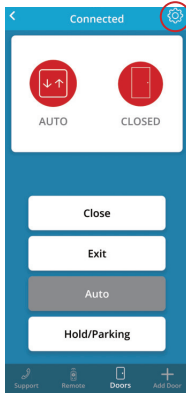
### 4 Test



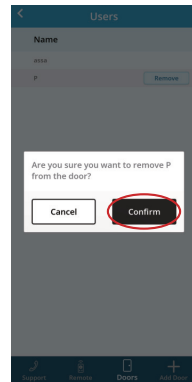
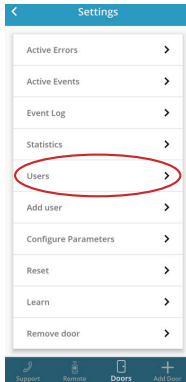


## 5 Add user by owner

**Note:** Owner can add up to 7 users.



## 6 Remove user by owner



## 7 Log in to the app with user

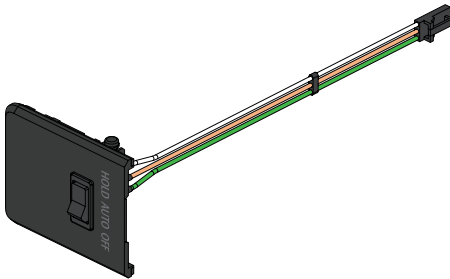


## 8 The differences between owner and user

Functions	Owner	User
Factory reset	Yes	No
Show users	Yes	No
Add user	Yes	No
Remove user	Yes	No

## Door mode functionality

### HOLD/AUTO/OFF switch



Function	Program
HOLD	The door can be held at any position when opening or closing.
AUTO	Impulses from activation units connected to inner impulse or outer impulse will initiate a door open cycle. The door can be opened with the inner / outer wall or jamb-mounted contact switches.
OFF	Only KEY Impulses such as key pads and after hours security access can open the door.

### Modes and functions on app

**Note:** The use of the mobile app mode selector will cancel the last selection on the rocker switch mode selection and vice versa. Changing the rocker switch mode will cancel the app based mode selection. The last mode selector used is the one that takes control.

#### Wireless controlling

The door can be controlled by the app on a smartphone or a tablet.

##### Off / Closed

The door is closed. The door cannot be opened with the inner / outer wall or jamb-mounted contact switches. The door is locked if an electromechanical locking device has been fitted.

##### Exit

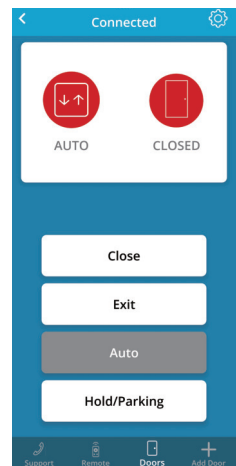
Passage from inside only. The door is normally locked if an electromechanical locking device has been fitted. The door can only be opened with the inner wall or jamb-mounted contact switches (if fitted), or by a signal to the Key Impulse.

##### Auto

The door can be opened with the inner / outer wall or jamb-mounted contact switches. Electromechanical locking device will be released when door is closed.

##### Hold / Parking

The door can be held at any position when opening or closing. The door will not react on impulses, "push and go" or "push and close".



Additional operational functions can be accessed through the app:

### Active Errors

Active errors can be displayed.

### Active Events

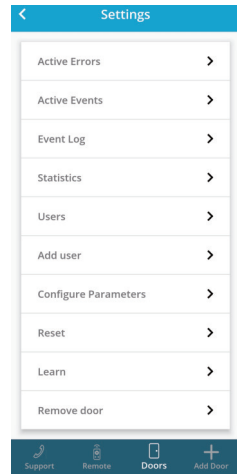
Active events can be displayed.

### Event Log

Events and errors can be saved.

### Statistics

Cycles of the actions can be calculated.



## Push and go

When the door is manually pulled / pushed to open, it will perform an open cycle. Push and go is not active in mode "Off / Closed".

## Power assist

The "Power Assist" function will help the user to open the door manually. If "High" is chosen, the motor will give maximum help. In door mode "Off / Closed", the motor will not assist the user.

## Extended closing torque

The motor will increase the closing torque when the door is closed or during closing. If the parameter is set to "0", the door will close with normal spring power.

## Stop on stall

When the door is opening and gets blocked the "Stop on stall" function will make the door stop and stand still in the blocked position for a short time and then start closing. If "Stop on stall" is inactive, the door will continue to drive towards the open position for some time before it starts closing.

## Push and close

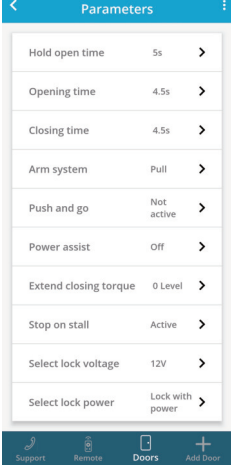
When the door is manually pulled / pushed towards closed position the "Push and close" function will cancel the hold-open time and start to close the door.

## Reverse upon obstruction

If the door gets blocked when closing, the "Reverse upon obstruction" will make the door re-open. If the "Reverse upon obstruction" is disabled the door will continue to drive towards the closed position.

## Ratchet function

When the door is given an activation signal, the door will open and stay in the open position until a second activation signal is received. The "Ratchet function" is only active if the parameter is enabled and the activation signal sent to the door is an inner impulse (connected to inner impulse).



Parameters	
Hold open time	5s >
Opening time	4.5s >
Closing time	4.5s >
Arm system	Pull >
Push and go	Not active >
Power assist	Off >
Extend closing torque	0 Level >
Stop on stall	Active >
Select lock voltage	12V >
Select lock power	Lock with power >

## Configuration parameters










Parameter name	Default settings	Value
Push and go	Not active	Not active / Active
Power assist	Off	Off / Low / Medium / High
Push and close	Not active	Not active / Active
Ratchet function	Not active	Not active / Active

# Regular safety checks

To help you fulfill the national/international requirements and to avoid malfunction and risk for injuries, we have provided the following checklist.



Do not use the operator if repair or adjustment is necessary.

Daily Action			If problem occurs
Activate your operator and check <i>visually</i> , fastening and any damage of <ul style="list-style-type: none"> <li>• operator ①</li> <li>• arm system ②</li> <li>• control switch ③</li> <li>• hinges ④</li> <li>• door and glass ⑤</li> </ul>			
Also inspect your operator and check <i>visually</i> for <ul style="list-style-type: none"> <li>• sharp edges on the door leaf and door frame (if any) ⑥</li> <li>• condition of door seals ⑦</li> <li>• finger protection ⑧</li> <li>• and finally that the complete door runs properly and closes slowly in a smooth way</li> </ul>			 
Set the mode in "Off/Closed" and check that the operator and lock work together. Also check that the lock really secures the door ⑨.			
Activate the manual activation unit ⑩ if any, and walk towards the door. Check that the door has opened sufficiently while you pass the entrance/exit.			
Escape doors	By law, these tests must be performed regularly by trained personnel.	Set the mode in "Auto". Push the door manually in escape direction and make sure that no object or function will prevent the door from opening. Also make sure the escape route is free for use.	 
Fire doors		Let the door close after an impulse ensuring nothing prevents the door from closing and locking (if regulations require it).	 

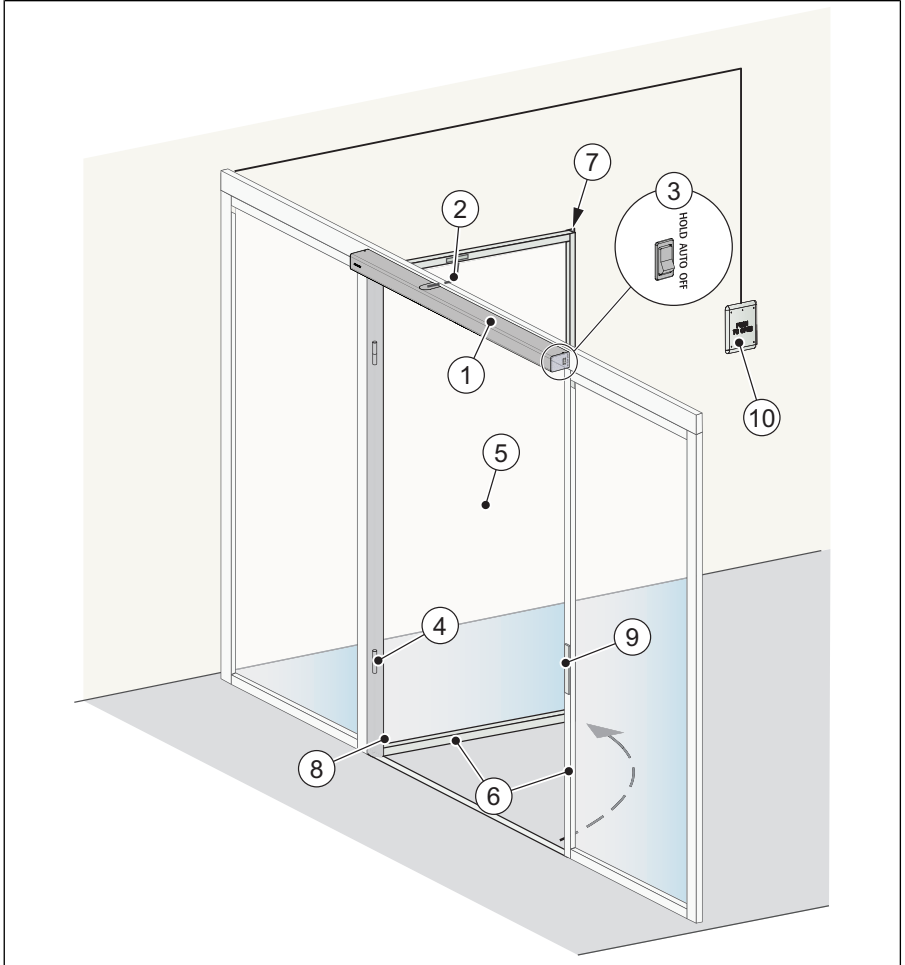


= Take appropriate measures.



= Contact your ASSA ABLOY Entrance Systems representative. For contact information, see last page.

## FUNCTION AND VISUAL INSPECTION

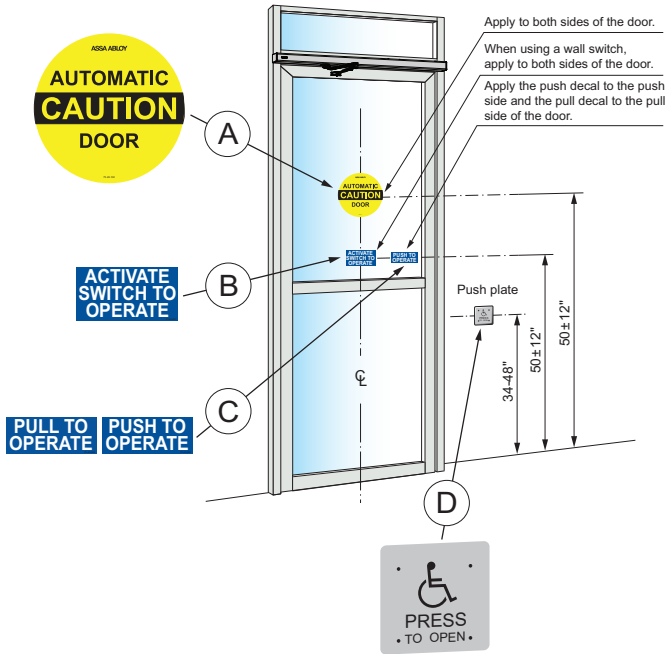


## CLEANING


The best way to remove dust and dirt from the ASSA ABLOY SW60 is to use water and a soft cloth or a sponge. A gentle detergent may be used. To maintain the quality of the surface treatment, the surfaces should be cleaned once/four months period. The cleaning should be documented. To avoid damages to the profiles the brushes/weather stripping must be vacuum-cleaned monthly.

- Do not expose windows, doors or profiles to alkalis. Both aluminium and glass are sensitive to alkalis.
- Do not clean with high pressure water. Operator, mode selector and sensor may be damaged and water may enter the profiles.
- Do not use polishing detergent.
- Do not scrub with materials like Scotch-brite™, as this will cause mechanical damage.

## SIGNAGE according to ANSI/BHMA A156.19



**Surface Applied shown**

	Action	If problem occurs
	Check that all required signage is applied and intact. Mandatory indicates that the signage is required by European directives and equivalent national legislation outside the European Union.	
(A)	Dual Side "AUTOMATIC DOOR / CAUTION"	
(B)	Dual Side "Activate Switch to Operate"	
(C)	Push side "PUSH TO ACTIVATE" Pull side "PULL TO ACTIVATE"	
(D)	Push plate: Recommended, if applicable.	



## General accessories

- Control switch ③, [see page 15](#).
- Electrical lock ⑨, [see page 15](#).
- Push plate ⑩, [see page 15](#).
- Remote control (not illustrated).
- Access control (not illustrated).
- Door stop (not illustrated).

## Safety accessories

- Finger protection ⑧, [see page 15](#).

## Troubleshooting

What's wrong?	Remedies
<b>The door does not open</b> <b>The motor does not start</b>	Change the setting of the control switch.
	Check the mains power and fuse in the building.
<b>The motor starts but</b> <b>door(s) will not open</b>	Unlock the mechanical locks.
	Check that nothing is jammed beneath the door.
<b>The door does not close</b>	Change the setting of the control switch.
	Check that nothing is jammed beneath the door.
<b>If the problem continues, please contact your ASSA ABLOY Entrance Systems representative.</b>	

## Service/Maintenance

Service and adjustments performed by your ASSA ABLOY Entrance Systems-authorized representative will ensure safe and proper operation of your automatic door unit.

The table below shows the recommended interval in months, when to replace parts during preventive maintenance. Talk to your ASSA ABLOY Entrance Systems representative to learn more about our service offering.

Part	Part number	Cycles/hour in operation			Abusive Environment
		<10	<100	>100	
		Low traffic	Medium traffic	High traffic	
PUSH arm kit (Black / Grey)	331020857BK / PD	24	12	6	6
PULL arm kit (Grey)	331020226BK / PD	24	12	6	6
PULL arm service kit (Grey)	330000830BK / PD	24	12	6	6
Lock kick for PUSH & PULL	330000829	24	12	6	6
Control unit (CU)	331018537	60	60	60	60
Transmission unit	330000841	60	24	24	24

## Other products from ASSA ABLOY Entrance Systems

- Door Systems
- Revolving doors
- Sliding doors
- Automatic and manual activation units
- Overhead sectional doors
- Service such as planned maintenance and upgrade programs, emergency repairs, service advice and door management
- Vertical lifting fabric doors
- Dock levelers
- Dock shelters
- Folding doors
- High speed doors



ASSA ABLOY Entrance Systems is a leading supplier of entrance automation solutions for efficient flow of goods and people. Building on the long-term success of the Besam, Albany and Megadoor brands, we offer our solutions under the ASSA ABLOY brand. Our products and services are dedicated to satisfying end-user needs for safe, secure, convenient and sustainable operations. ASSA ABLOY Entrance Systems is a division within ASSA ABLOY.

[assaabloyentrance.us](http://assaabloyentrance.us) • [assaabloyentrance.ca](http://assaabloyentrance.ca)



ASSA ABLOY Entrance Systems

Tel: 1-866-237-2687 (US) • 1-888-608-9242 (Canada)  
[info-automatic.na.entrance@assaabloy.com](mailto:info-automatic.na.entrance@assaabloy.com)  
[assaabloyentrance.us](http://assaabloyentrance.us) • [assaabloyentrance.ca](http://assaabloyentrance.ca)