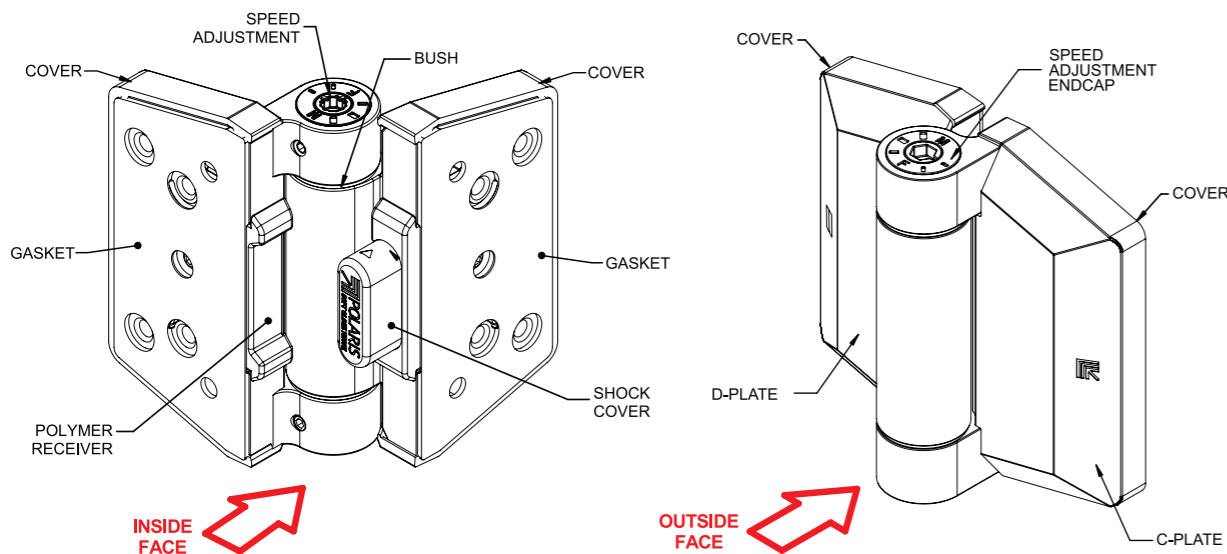




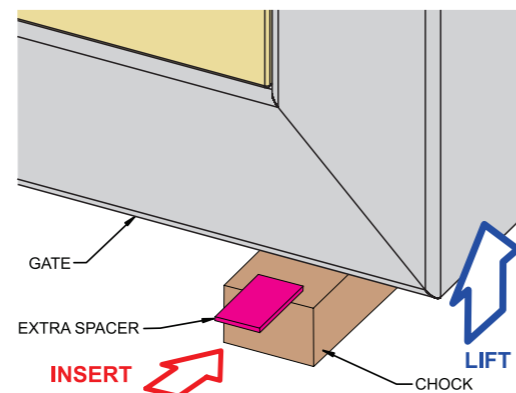
HOW TO FIT POLARIS SOFT CLOSE HINGES (200 MODEL)

ALUMINIUM, TIMBER & OTHER GATES

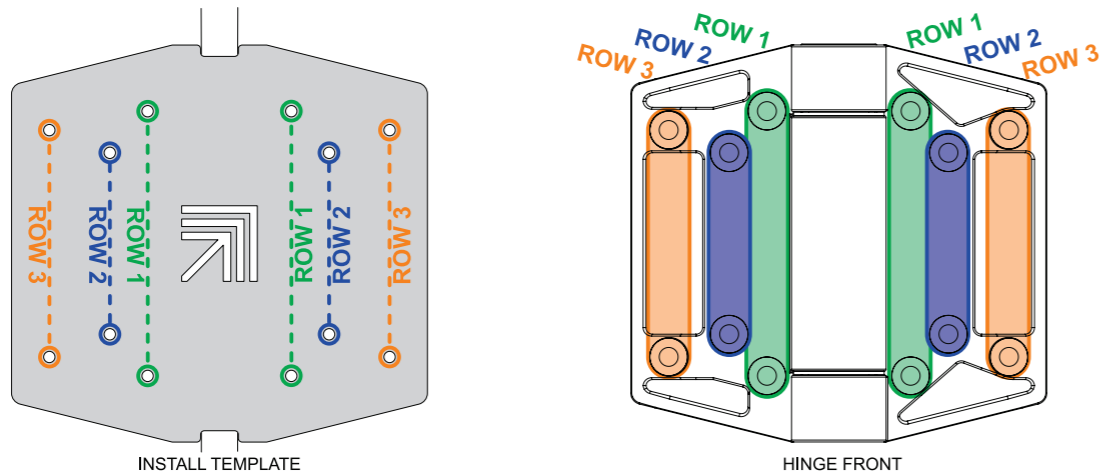


1. Remove the two Polaris Soft Close Hinges from the box and all the screws.
(BE CAREFULL WHEN HANDLING, AS THE HINGES HAVE STRONG SPRINGS WHICH COULD PINCH FINGERS)
2. Hinges are designed to handle lighter gates but more hinges can be used for heavier applications.
3. Your gate post should be plumb and level. This affects the performance of the hinges to keep them aligned and manage the balance of the gate weight.

4. Best to support the gates weight underneath with chocks/spacer, set at your desired height. The Gate height can be accomplished by using some smaller spacers/packers. An extra 2mm (1/8) higher at the latch end, avoids the gate droop from its weight. When installing we recommend using clamps etc. to hold things in good alignment.

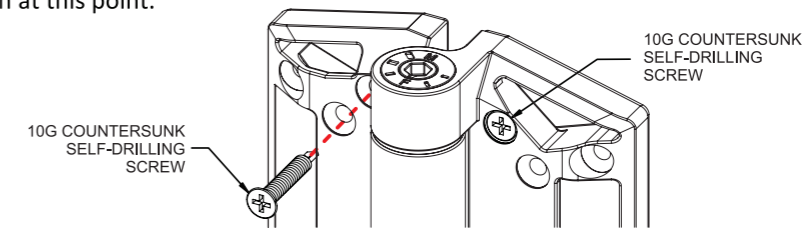


5. Use the provided template and place in squared off position with some temporary tape, then clearly mark the holes centres for either ROW's 1 or 3. These rows are for the initial install and swing test. Drill 3mm (1/8) pilot holes to keep the installation accurate.



The unused fastener holes in the hinges are for either re-alignment (**ROW 1** or **3** depending) after first test IF there is a misalignment, and **ROW 2** which is for final secure 'anchoring' of the hinge.

6. Without the template, position the hinge over the pilot hole positions. Screw in the 10G countersunk self-drilling screws into the post and the gate. A drill or impact driver will do the job without any excess force required. Each hinge should have 4x screws each at this point.



7. Gently do the first test 'open-close' of the gate to see if your pilot holes are correctly aligned. If re-alignment is required go back to step (4.) discard the old pilot holes and use the next unused ROW (**ROW 1** or **3** which depends on what you already used). When you are happy you have it aligned, you can secure the hinges with screws into **ROW 2**

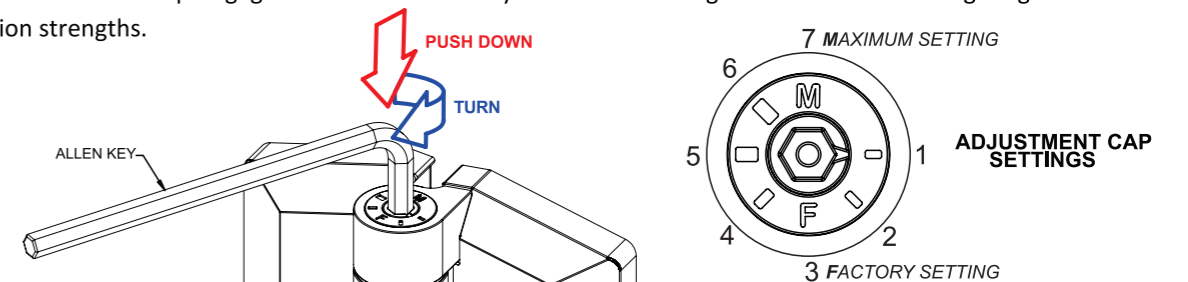
Hinges need to be secured at a minimum with either:

- A. **ROW 2** (4x 10G screws per Hinge)
- B. **ROW 1** and **ROW 3** (6x 10G screws per Hinge)

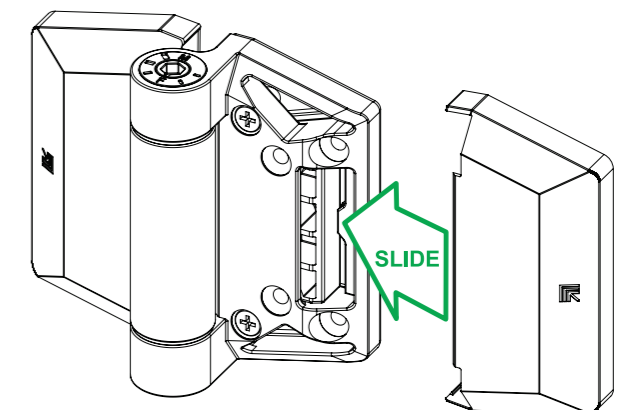
Using all the ROW's is not necessary but can be used

Timber gate applications should use self-tapping timber screws instead (not provided)

8. The gates closing speed/strength can be adjusted by inserting an Allen key into the top slot. Gently push down whilst rotating the adjustment end cap clockwise to the next setting (this increases the tension). Should you want to Dis-engage the mechanism or lower the tension setting, push down whilst firmly holding onto the Allen key (2 handed control). The spring will push rotation and you can continue anti clockwise, but still keep downward pressure on the cap. Lifting the Allen key out of the endcap engages tension and holds your chosen setting. The below numbering diagram indicates spring tension strengths.



9. Test self-closing action and re-adjust if need be by repeating the above step (8.) It is important that the difference between the hinges tension settings are not greater than 1 setting apart (This ensures both hinges are sharing the work load and extends the life of the spring)



10. Finally the covers slide over and clip onto the hinge. These hide the screw heads, therefore the heads must finish below the surface as not to foul the covers. The covers can also be spray painted with an aerosol to match a particular colour scheme.

TROUBLE SHOOTING

- A. **Gate not self-closing:** ensure all is plumb (see 3.), ensure speed adjustment is NOT disengaged (see 8.), ensure hinges are fitted square and parallel (see 5.)
- B. **Gate is not closing:** ensure shock absorbers are not interfering with closing action, Adjust speed adjustment cap (see 8.)
- C. **Gate is slamming:** check that all shock absorbers are working, Adjust speed adjustment cap (see 8.)
- D. **Gate closes to slow:** Ensure all is plumb (see 3.). Adjust speed adjustment end cap (see 8.)
- E. **Gate is drooping:** identify where the "movement" is when lifting the gate. Is the gap between the post and gate consistent from top to bottom? (see 4.& 5.) Ensure the hinges are fastened tight (see 9.)

POLARIS SOFT CLOSE HINGE IS AN AUSTRALIA DESIGN AWARD™ WINNER – Glass Hardware Australia

WWW.POLARISHINGE.COM - INFO@POLARISHINGE.COM