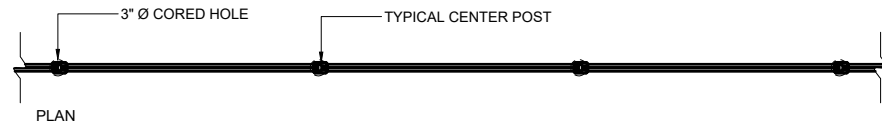
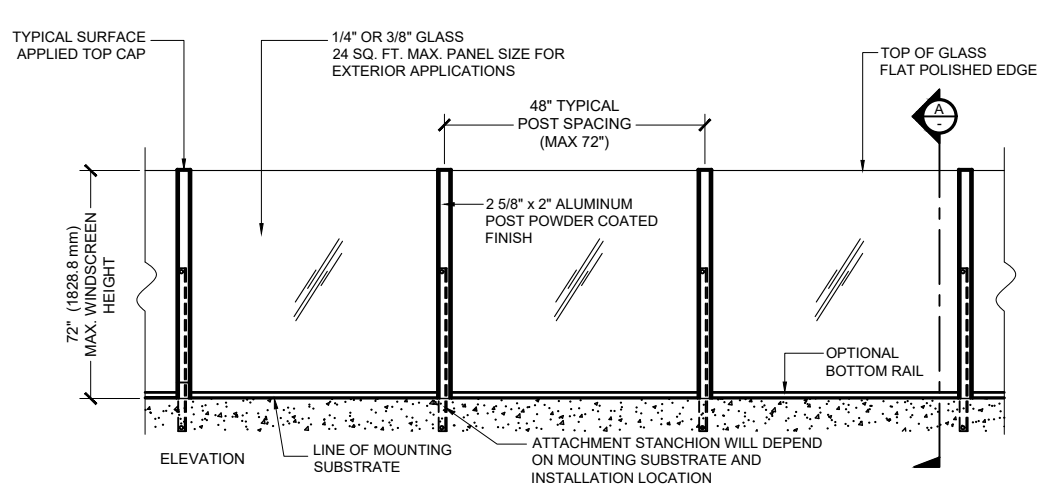
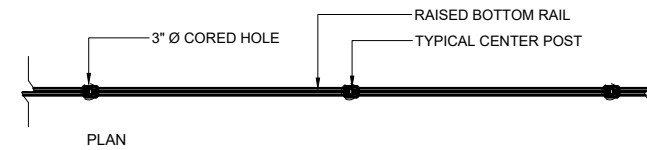
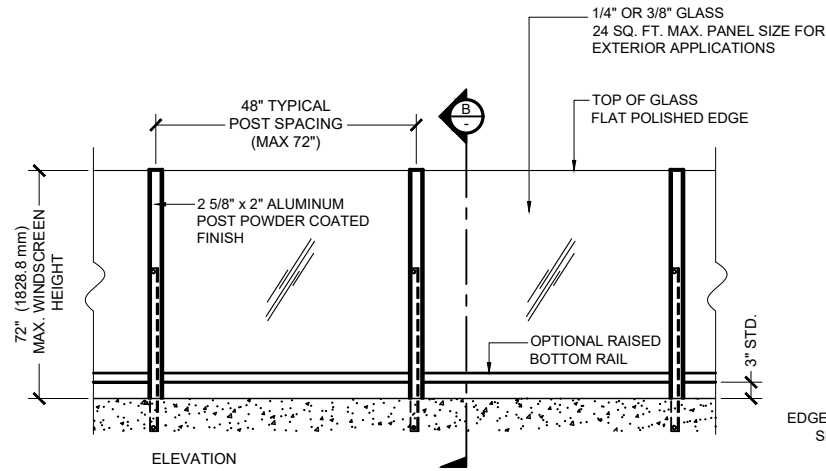
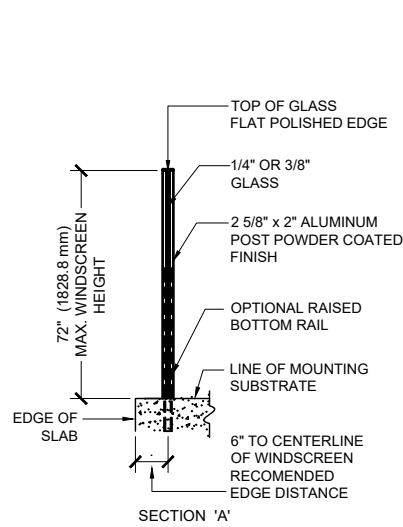


CRL AWS - ALUMINUM WINDSCREEN SYSTEM

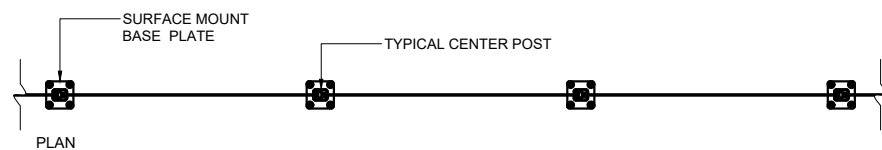
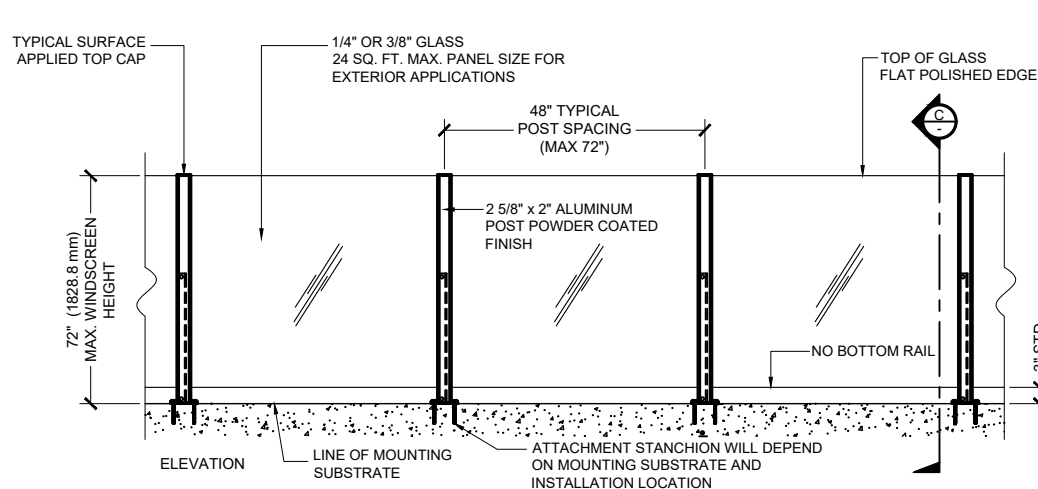
TYPICAL PLANS & ELEVATIONS - RECTANGULAR POSTS



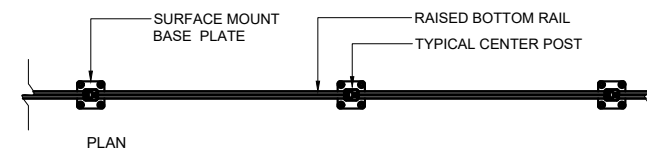
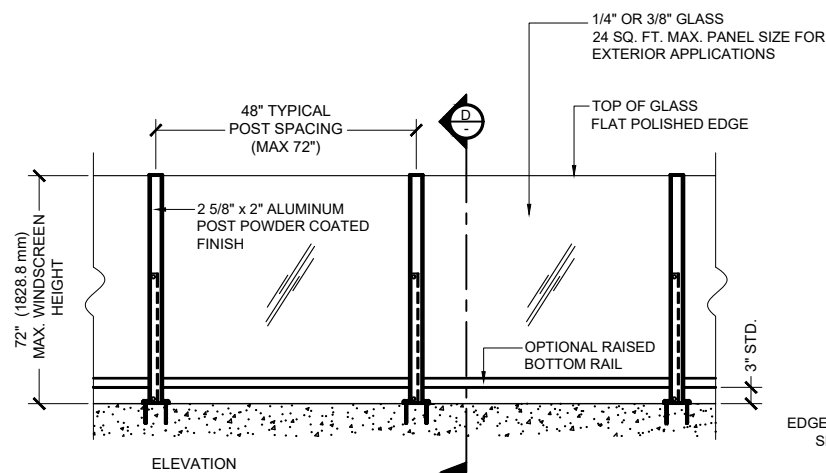
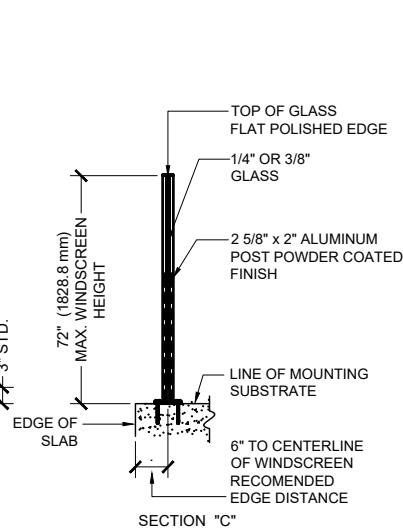
1 TYPICAL ALUMINUM WINDSCREEN (w/ FLOOR MOUNT BOTTOM RAIL)
 DETAILED WITH CORE - MOUNT STANCHIONS SCALE: 3/4"=1'-0"



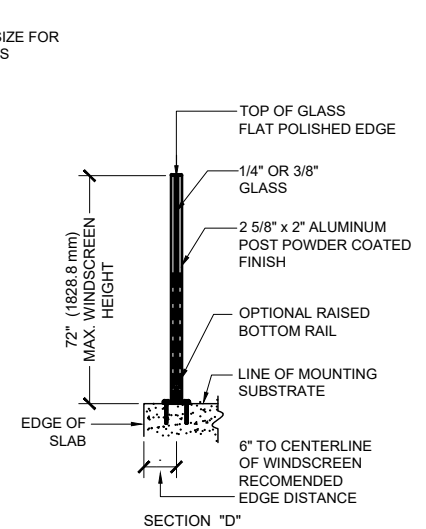
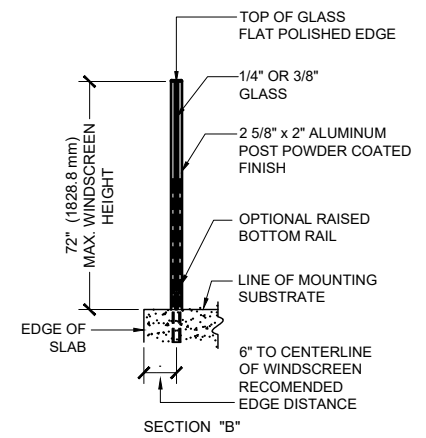
2 TYP. ALUMINUM WINDSCREEN (w/ RAISED BOTTOM RAIL)
 DETAILED WITH CORE - MOUNT STANCHIONS SCALE: 3/4"=1'-0"



3 TYP. ALUMINUM WINDSCREEN - w/ NO BOTTOM RAIL
 DETAILED WITH SURFACE - MOUNT STANCHIONS SCALE: 3/4"=1'-0"



4 TYP. ALUMINUM WINDSCREEN - w/ RAISED BOTTOM RAIL
 DETAILED WITH SURFACE - MOUNT STANCHIONS SCALE: 3/4"=1'-0"



Revisions By:

CRL

2503 E. Vernon Avenue, Los Angeles, CA 90058-1887
 PH (800)-421-6144 FX (800)-857-7501 www.crlaeros.com

Discription:
 CRL / AWS
 ALUMINUM RECTANGULAR
 POST GLASS WINDSCREEN
 SYSTEM

Drawn By: RPD

Date: 01/27/14

Scale: AS NOTED

File Name:

CRL-AWS-RectPGW SYS.dwg

Sheet

1

CRL AWS - ALUMINUM WINDSCREEN SYSTEM

TYPICAL AWS - DIFFERENT PLAN CONFIGURATIONS - RECTANGULAR POSTS

Revisions By:

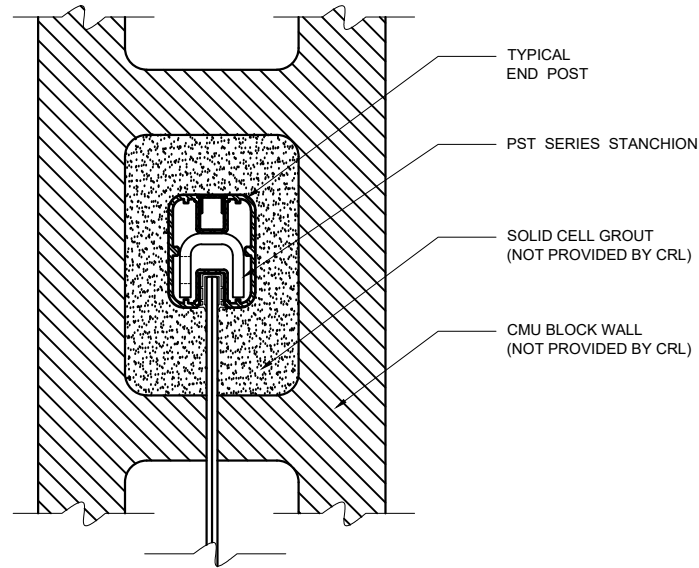
CRL.

2503 E. Vernon Avenue, Los Angeles, CA 90058-1887
PH (800)-421-6144 FX: 800-857-7501 www.crlaurena.com

Discription:
CRL / AWS
ALUMINUM RECTANGULAR
POST GLASS WINDSCREEN
SYSTEM

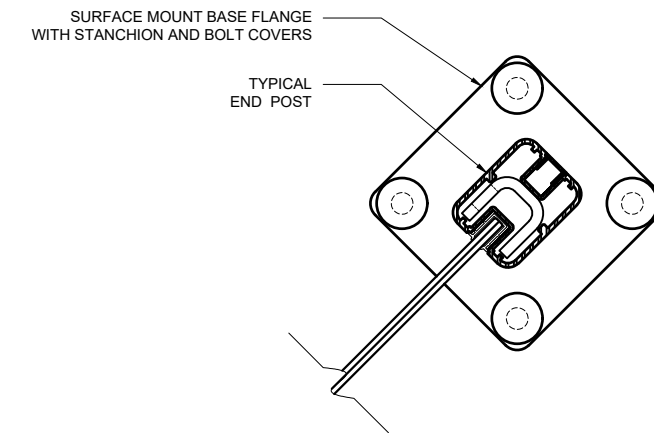
Drawn By: RPD
Date: 01/27/14
Scale: AS NOTED
File Name:
CRL-AWS-RectPGW SYS.dwg

Sheet
2



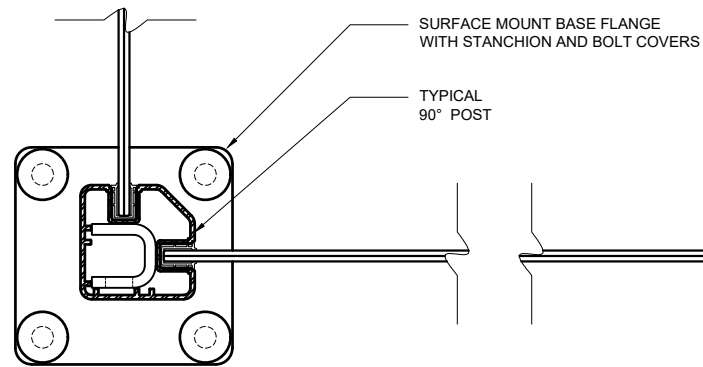
1 CRL AWS 2" x 2 5/8" RECTANGULAR 180° ALUMINUM END POST *

DETAILED WITH CORE MOUNTING OPTION FOR CMU BLOCK WALL SCALE: 6"=1'-0"



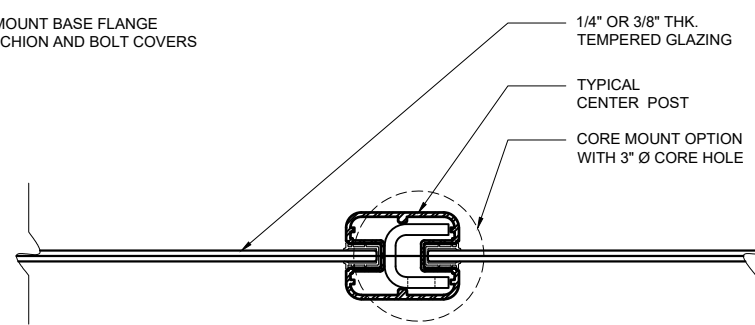
5 CRL AWS 2" x 2 5/8" RECTANGULAR 180° ALUMINUM END POST *

DETAILED WITH SURFACE MOUNTING OPTION SCALE: 6"=1'-0"



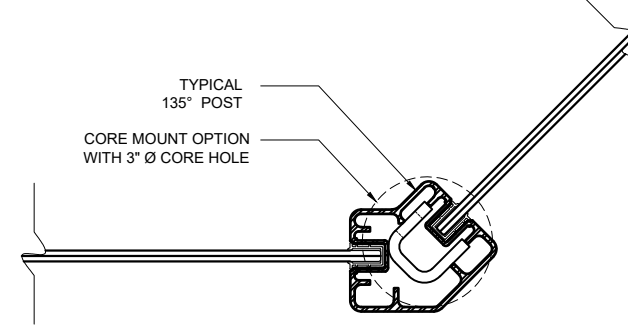
2 CRL AWS 2" x 2 5/8" RECTANGULAR 90° CORNER ALUMINUM POST *

DETAILED WITH SURFACE MOUNTING OPTION SCALE: 6"=1'-0"



3 CRL AWS 2" x 2 5/8" RECTANGULAR 180° ALUMINUM CENTER POST *

DETAILED WITH CORE MOUNTING OPTION FOR CONCRETE SLAB SCALE: 6"=1'-0"



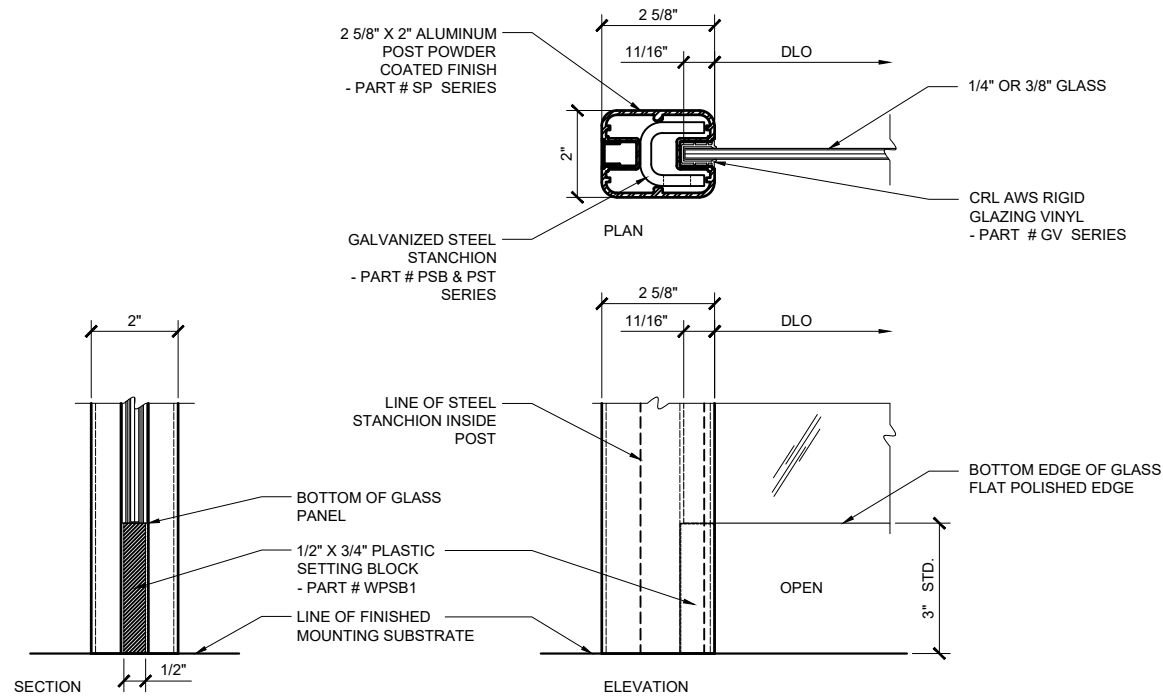
4 CRL AWS 2" x 2 3/8" RECTANGULAR 135° CORNER ALUMINUM POST *

DETAILED WITH CORE MOUNTING OPTION FOR CONCRETE SLAB SCALE: 6"=1'-0"

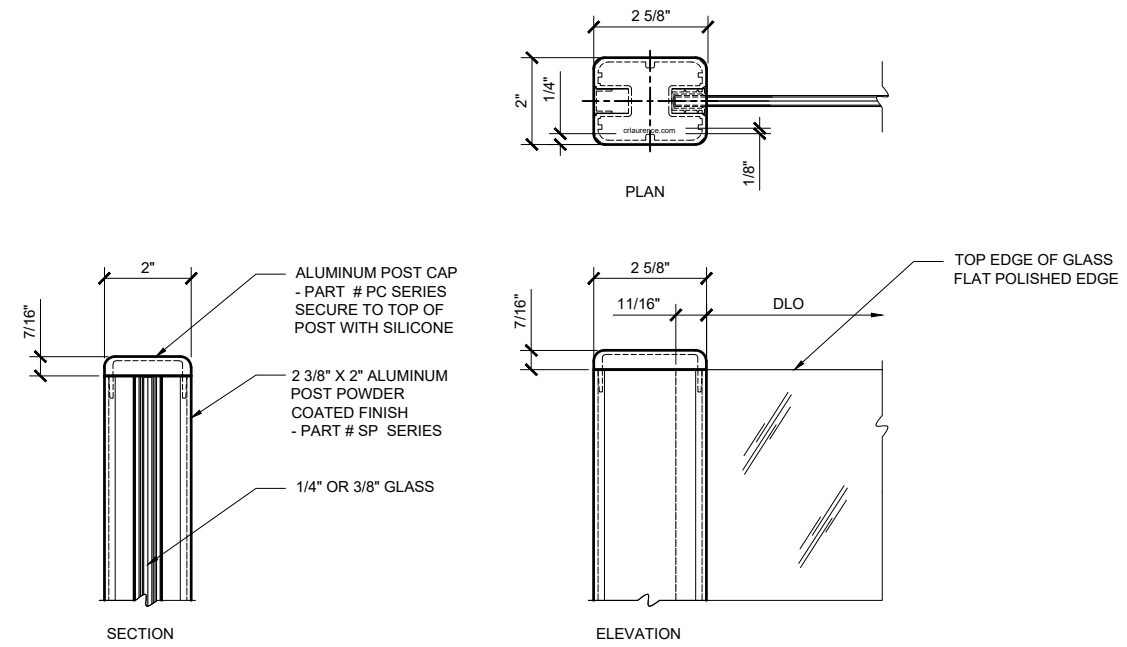
* NOTE: SEE PAGE 4 FOR DETAILS OF EACH POST MOUNTING OPTION

CRL AWS - ALUMINUM WINDSCREEN SYSTEM

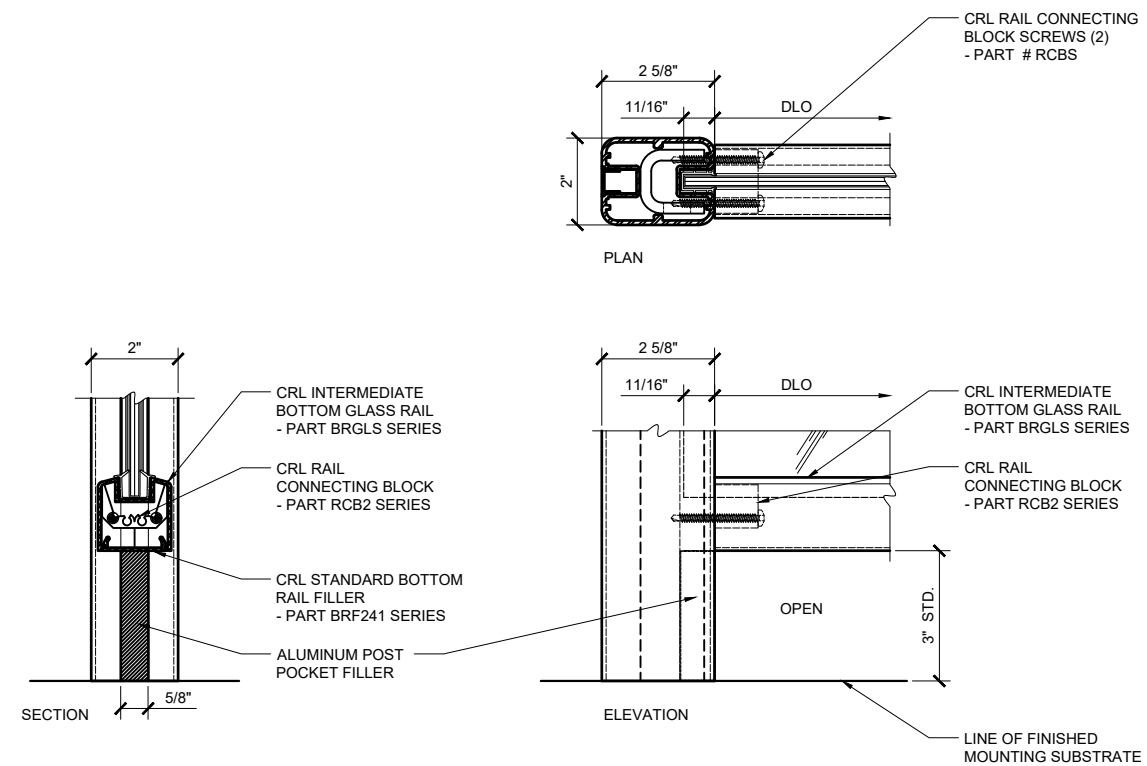
TYPICAL AWS PANEL BOTTOM RAIL OPTIONS & TOP CORNER DETAILS - RECTANGULAR POSTS



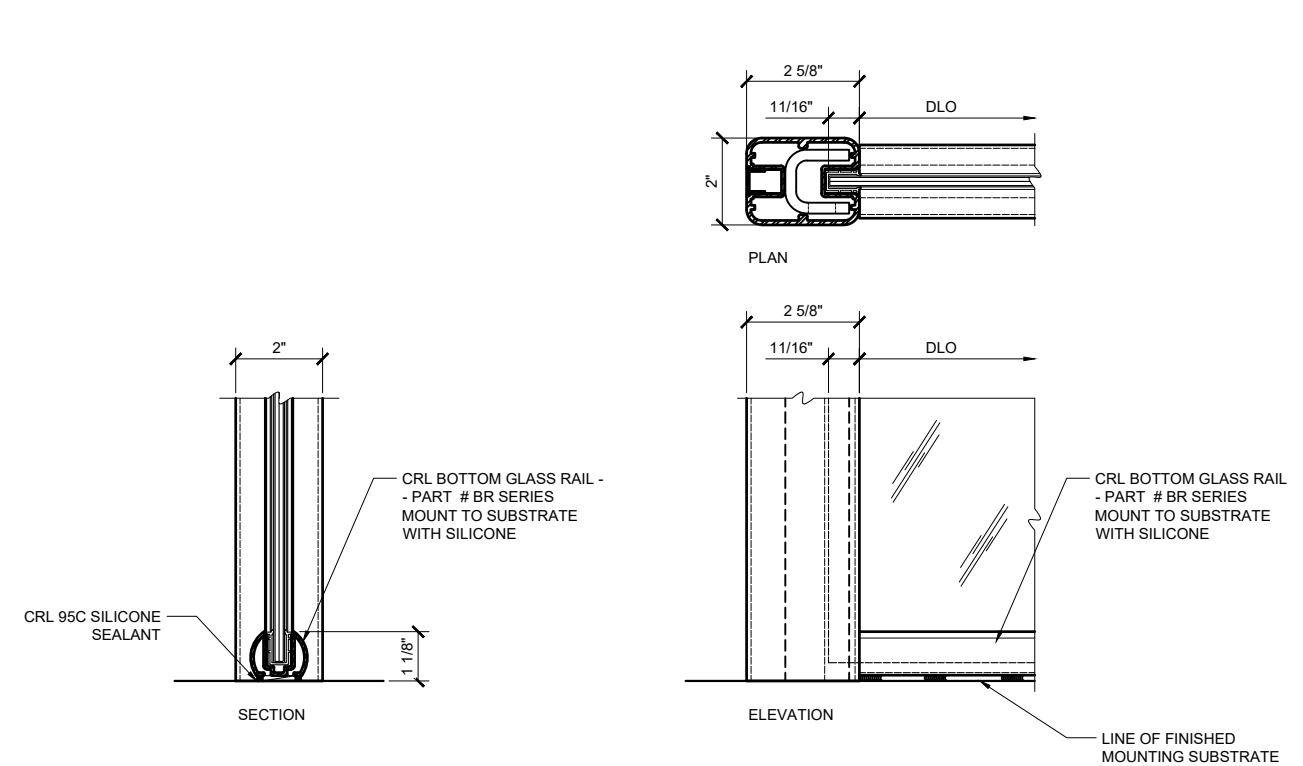
1 **DETAIL WITH NO BOTTOM GLASS RAIL**
 SEE PAGE 4 FOR POST MOUNTING OPTIONS
 SCALE: 6"=1'-0"



3 **DETAIL AT TOP CORNER OF WINDSCREEN PANEL**
 DETAILED WITH 2" X 2 5/8" ALUMINUM RECTANGULAR POST
 SCALE: 6"=1'-0"



2 **DETAIL WITH RAISED INTERMEDIATE BOTTOM GLASS RAIL**
 SEE PAGE 4 FOR POST MOUNTING OPTIONS
 SCALE: 6"=1'-0"



4 **DETAIL WITH BOTTOM GLASS RAIL**
 SEE PAGE 4 FOR POST MOUNTING OPTIONS
 SCALE: 6"=1'-0"

Revisions By:

CRL

2503 E. Vernon Avenue, Los Angeles, CA 90008-1887
 PH (800)-421-6144 FX: (800)-857-7501 www.crlaeros.com

Description:
 CRL / AWS
 ALUMINUM RECTANGULAR
 POST GLASS WINDSCREEN
 SYSTEM

Drawn By: RPD

Date: 01/27/14

Scale: AS NOTED

File Name:

CRL-AWS-RectPGW SYS.dwg

Sheet

3

CRL AWS - ALUMINUM WINDSCREEN SYSTEM

TYPICAL AWS POST MOUNTING OPTIONS - RECTANGULAR POSTS

Revisions By:

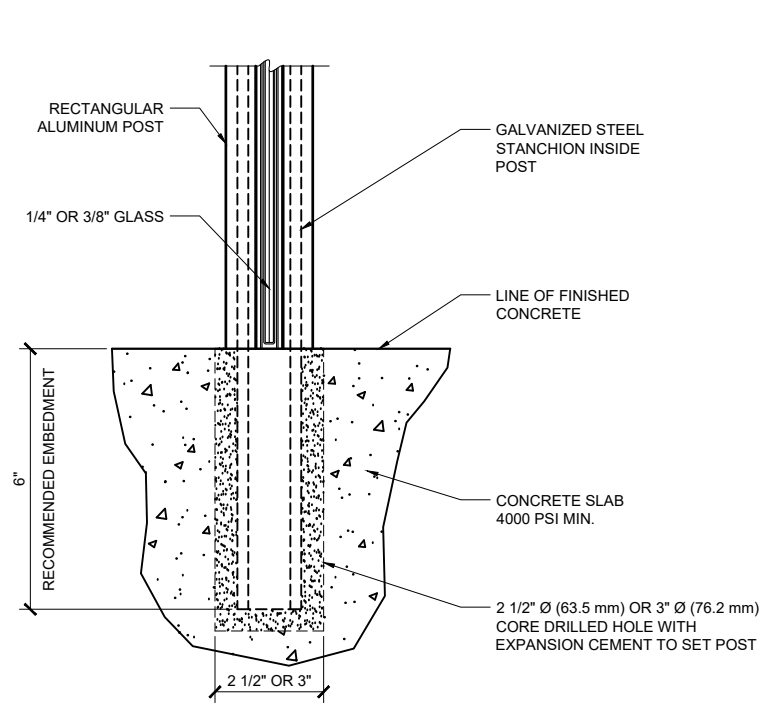
CRL

2603 E. Vernon Avenue, Los Angeles, CA 90058-1887
PH (800)-421-6144 FX: (800)-857-7501 www.crlaerco.com

Discription:
CRL / AWS
ALUMINUM RECTANGULAR
POST GLASS WINDSCREEN
SYSTEM

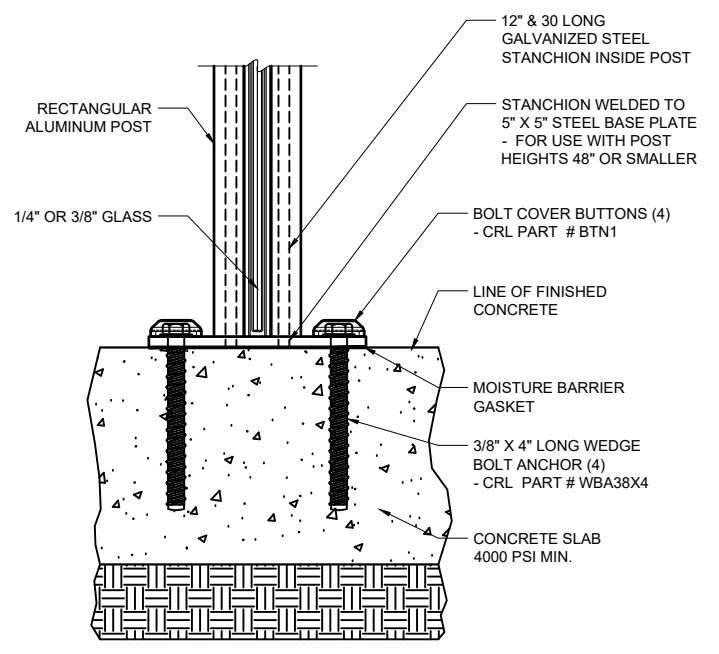
Drawn By: RPD
Date: 01/27/14
Scale: AS NOTED
File Name:
CRL-AWS-RectPGW SYS.dwg

Sheet
4



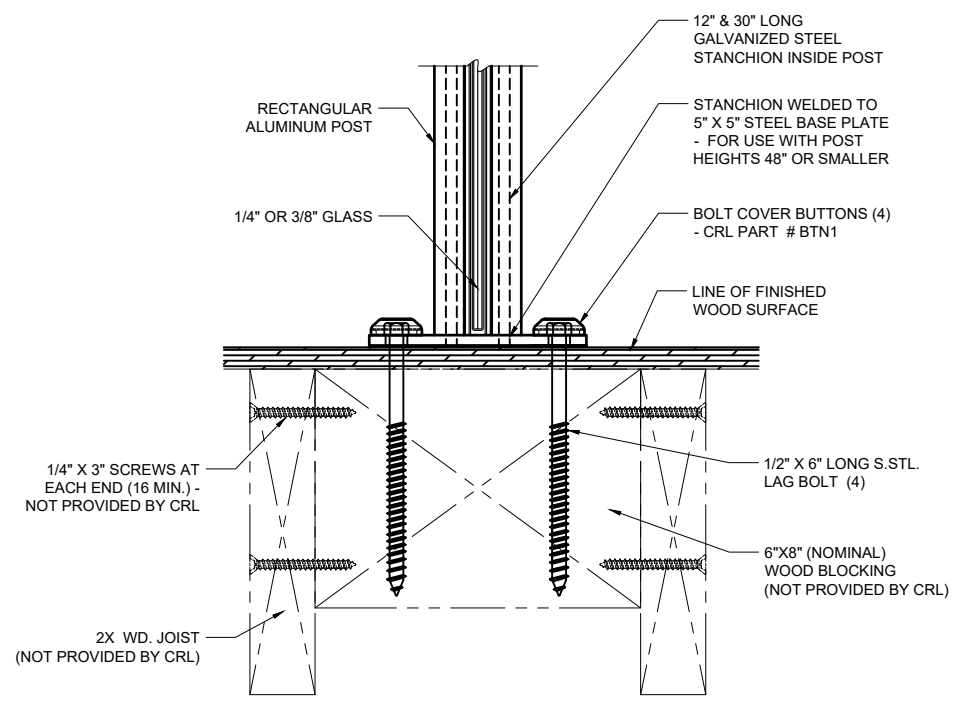
1 TYPICAL CORE MOUNT DETAIL FOR CONCRETE SUBSTRATE

SPACING WILL DEPEND ON MOUNTING SUBSTRATE AND REGION OF PROJECT SEE PAGE 6 FOR STANCHION LENGTHS
SCALE: 6"=1'-0"



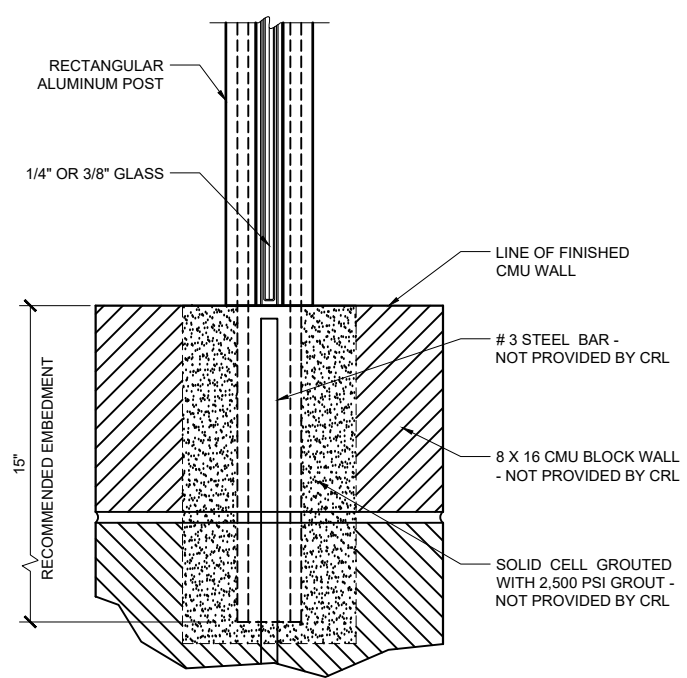
3 TYPICAL SURFACE MOUNT DETAIL FOR CONCRETE SUBSTRATE

SPACING WILL DEPEND ON MOUNTING SUBSTRATE AND REGION OF PROJECT
SCALE: 6"=1'-0"



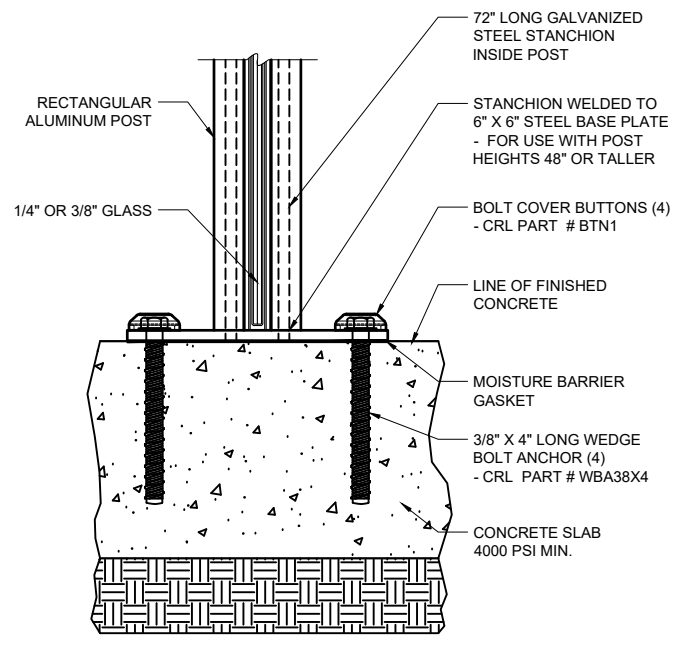
5 TYPICAL SURFACE MOUNT DETAIL FOR WOOD SUBSTRATE

SPACING WILL DEPEND ON MOUNTING SUBSTRATE AND REGION OF PROJECT SEE PAGE 6 FOR STANCHION LENGTHS
SCALE: 6"=1'-0"



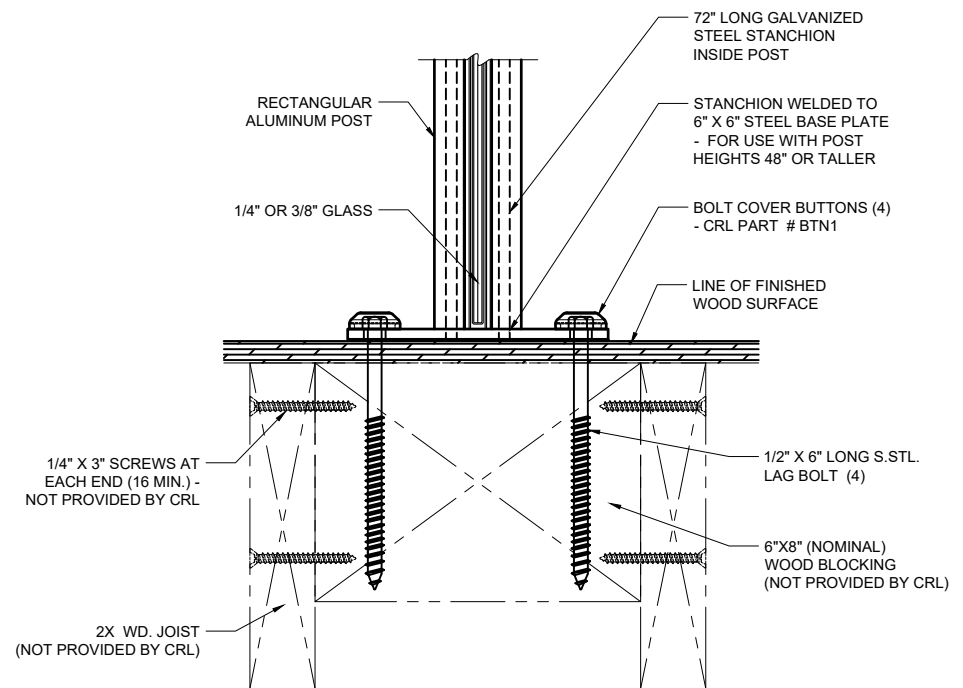
2 TYPICAL CORE MOUNT DETAIL FOR CMU BLOCK WALL SUBSTRATE

SPACING WILL DEPEND ON MOUNTING SUBSTRATE AND REGION OF PROJECT SEE PAGE 6 FOR STANCHION LENGTHS
SCALE: 6"=1'-0"



4 TYPICAL SURFACE MOUNT DETAIL FOR CONCRETE SUBSTRATE

SPACING WILL DEPEND ON MOUNTING SUBSTRATE AND REGION OF PROJECT SEE PAGE 6 FOR STANCHION LENGTHS
SCALE: 6"=1'-0"



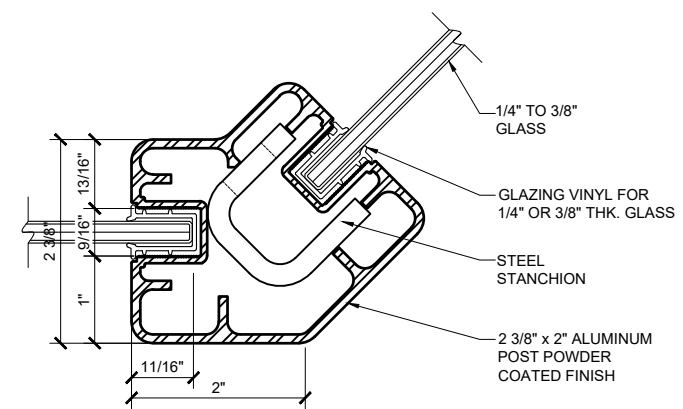
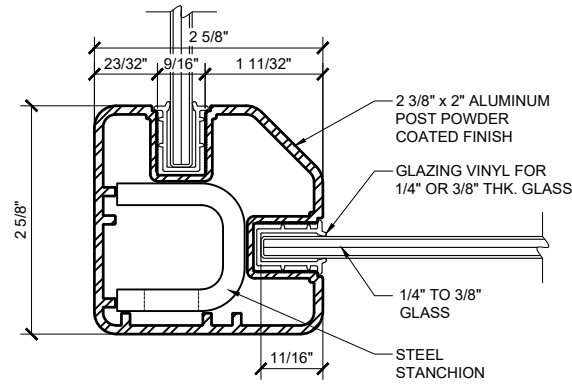
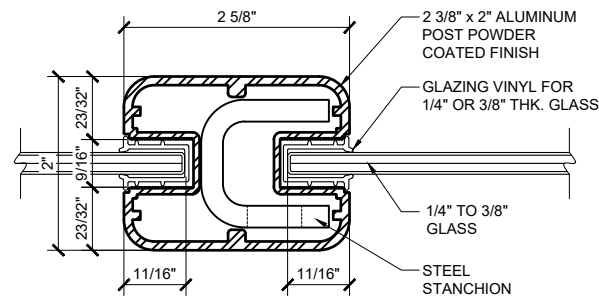
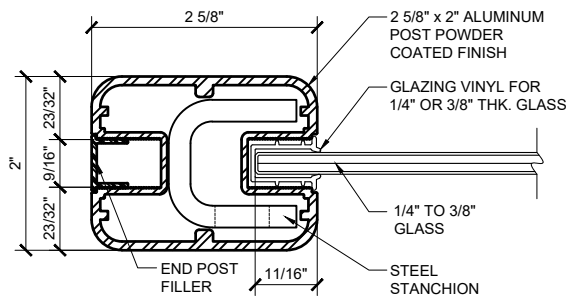
6 TYPICAL SURFACE MOUNT DETAIL FOR WOOD SUBSTRATE

SPACING WILL DEPEND ON MOUNTING SUBSTRATE AND REGION OF PROJECT SEE PAGE 6 FOR STANCHION LENGTHS
SCALE: 6"=1'-0"

CRL AWS - ALUMINUM WINDSCREEN SYSTEM

AVAILABLE POST CONFIGURATIONS & ACCESSORIES FOR RECTANGULAR POSTS

* STEEL STANCHIONS, FILLERS & KITS SOLD SEPARATELY
 ** STANDARD KIT INCLUDE POST, TOP CAP, & VINYL



1 CRL AWS 2" x 2 5/8" RECTANGULAR 180° ALUMINUM END POST *

SCALE: FULL SIZE

| CAT. # | LENGTH | w/ KIT ** |
|--------|-----------------|-----------|
| SP36 | 36" (914 mm) | S36EK |
| SP48 | 48" (1219 mm) | S48EK |
| SP60 | 60" (1524 mm) | S60EK |
| SP72 | 72" (1829 mm) | S72EK |
| SP194 | 241" (6.12 m) # | |

2 CRL AWS 2" x 2 5/8" RECTANGULAR 180° ALUMINUM CENTER POST *

SCALE: FULL SIZE

| CAT. # | LENGTH | w/ KIT ** |
|--------|-----------------|-----------|
| SP36 | 36" (914 mm) | S36CK |
| SP48 | 48" (1219 mm) | S48CK |
| SP60 | 60" (1524 mm) | S60CK |
| SP72 | 72" (1829 mm) | S72CK |
| SP194 | 241" (6.12 m) # | |

3 CRL AWS 2" x 2 5/8" RECTANGULAR 90° CORNER ALUMINUM POST *

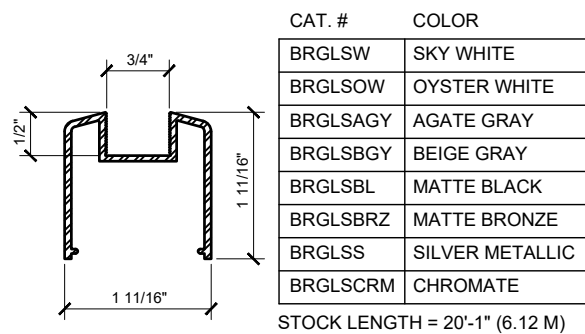
SCALE: FULL SIZE

| CAT. # | LENGTH | w/ KIT ** |
|--------|-----------------|-----------|
| SP936 | 36" (914 mm) | S36CRK |
| SP948 | 48" (1219 mm) | S48CRK |
| SP960 | 60" (1524 mm) | S60CRK |
| SP972 | 72" (1829 mm) | S72CRK |
| SP9194 | 241" (6.12 m) # | |

4 CRL AWS 2" x 2 3/8" RECTANGULAR 135° CORNER ALUMINUM POST *

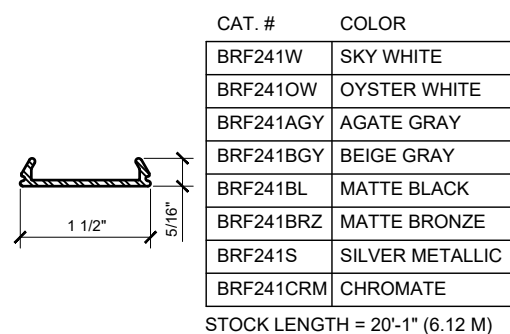
SCALE: FULL SIZE

| CAT. # | LENGTH | w/ KIT ** |
|--------|-----------------|-----------|
| SP536 | 36" (914 mm) | S365K |
| SP548 | 48" (1219 mm) | S485K |
| SP560 | 60" (1524 mm) | S605K |
| SP572 | 72" (1829 mm) | S725K |
| SP5241 | 241" (6.12 m) # | |



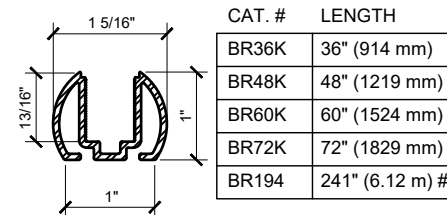
5 CRL INTERMEDIATE BOTTOM GLASS RAIL

SCALE: FULL SIZE



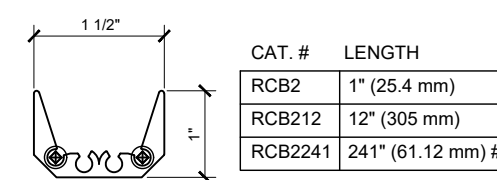
6 CRL STANDARD BOTTOM RAIL FILLER

SCALE: FULL SIZE



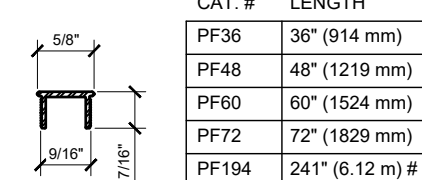
7 CRL AWS BOTTOM RAIL

SCALE: FULL SIZE



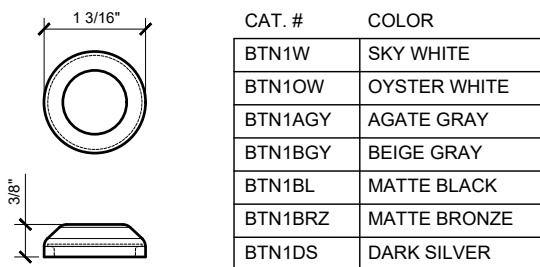
8 CRL RAIL CONNECTING BLOCKS

SCALE: FULL SIZE



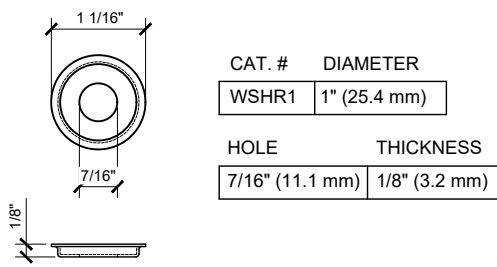
9 CRL AWS POST POCKET FILLERS

SCALE: FULL SIZE



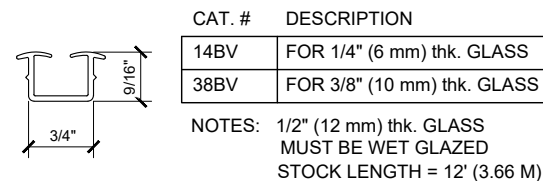
10 CRL COLOR MATCH BOLT COVER BUTTONS

SCALE: FULL SIZE



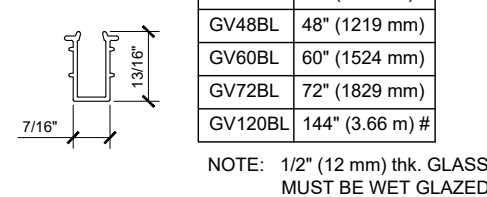
11 CRL S.STL. BUTTON WASHER

SCALE: FULL SIZE



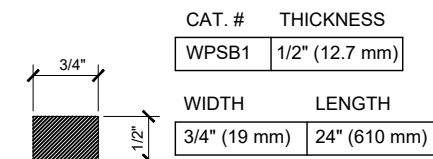
12 CRL BOTTOM RIGID GLAZING VINYL

SCALE: FULL SIZE



13 CRL AWS RIGID GLAZING VINYL

SCALE: FULL SIZE



14 CRL GLASS POCKET SETTING BLOCK FOR WINDSCREEN POSTS

SCALE: FULL SIZE

Description:
 CRL / AWS
 ALUMINUM RECTANGULAR
 POST GLASS WINDSCREEN
 SYSTEM

Revisions By:

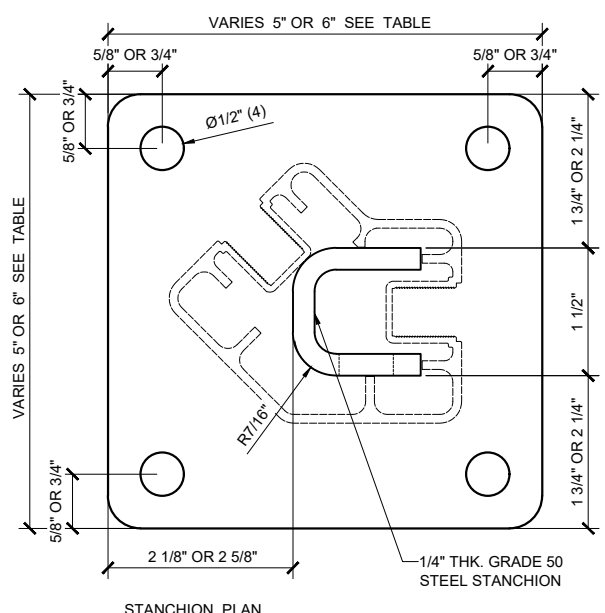
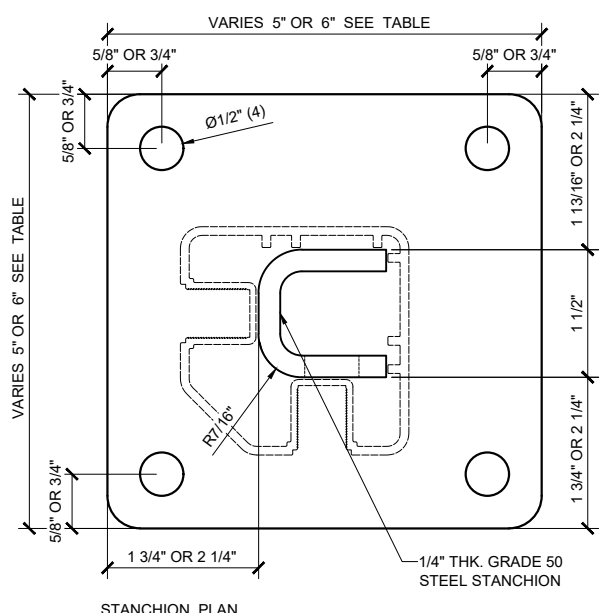
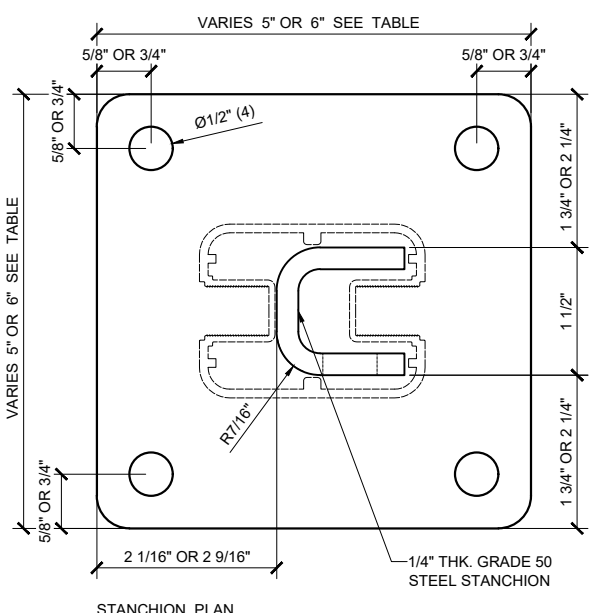
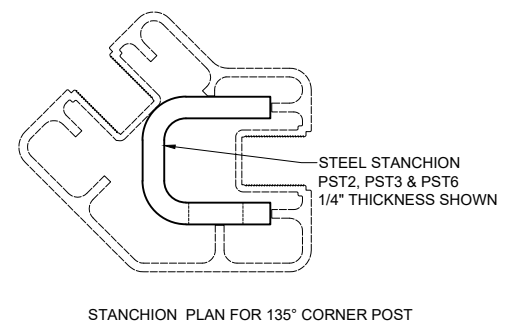
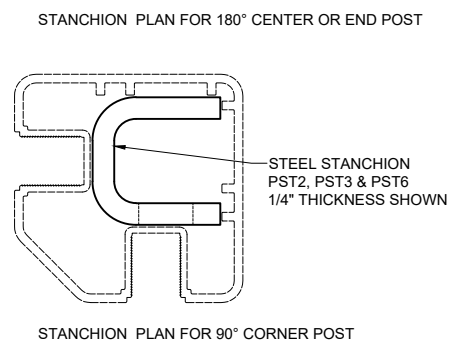
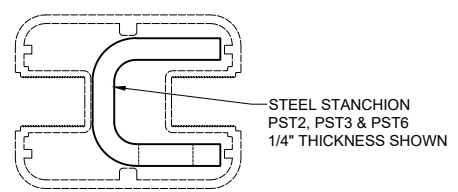
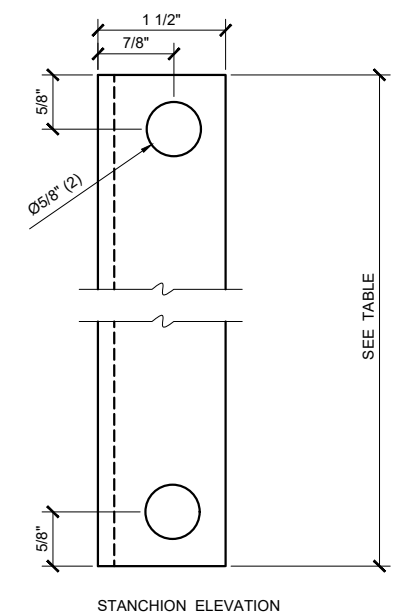
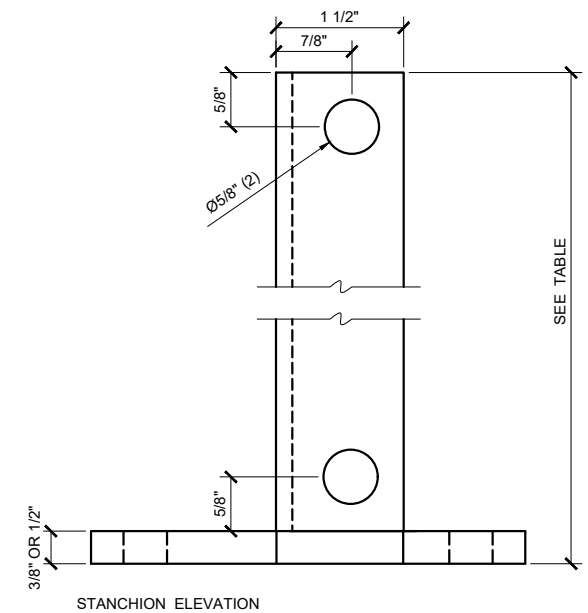
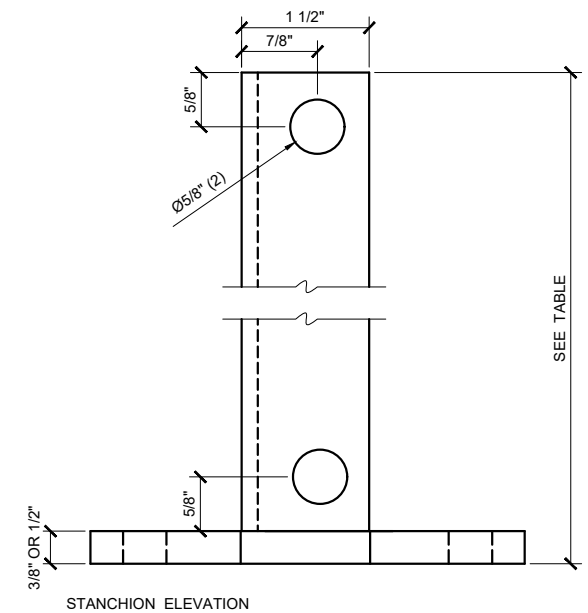
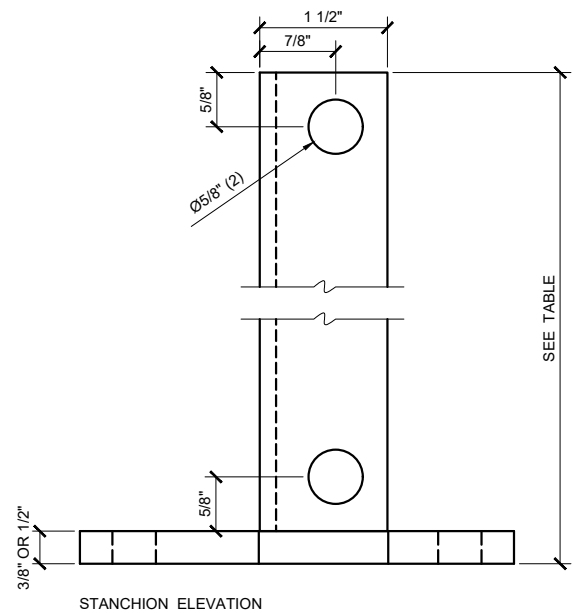
Drawn By: RPD
 Date: 01/27/14
 Scale: AS NOTED
 File Name: CRL-AWS-RectPGW SYS.dwg



2503 E. Vernon Avenue, Los Angeles, CA 90058-1887
 PH (800)-421-6144 FX: (800)-857-7501 www.crlaeros.com

CRL AWS - ALUMINUM WINDSCREEN SYSTEM

TYPICAL AWS ATTACHMENTS - WELDED STEEL (GRADE 50) SURFACE MOUNT / CORE MOUNT STANCHIONS FOR RECTANGULAR POSTS



1 WELDED STEEL STANCHION FOR 180° ROUND CENTER OR END POST
SCALE: FULL SIZE

2 WELDED STEEL STANCHION FOR 90° ROUND CORNER POST
SCALE: FULL SIZE

3 WELDED STEEL STANCHION FOR 135° ROUND CORNER POST
SCALE: FULL SIZE

4 STEEL STANCHION FOR CORE MOUNT POSTS
SCALE: FULL SIZE

| CAT. # | LENGTH | FOR POST HEIGHT | SIZE*** |
|--------|--------------|---------------------|-----------------|
| PSB1A | 12" (305 mm) | UP TO 24" (610 mm) | 5"X5"X3/8" THK. |
| PSB1B | 30" (762 mm) | UP TO 48" (1219 mm) | 5"X5"X3/8" THK. |
| PSB1C | 30" (762 mm) | UP TO 72" (1829 mm) | 6"X6"X1/2" THK. |

| CAT. # | LENGTH | FOR POST HEIGHT | SIZE*** |
|--------|--------------|---------------------|-----------------|
| PSB3A | 12" (305 mm) | UP TO 24" (610 mm) | 5"X5"X3/8" THK. |
| PSB3B | 30" (762 mm) | UP TO 48" (1219 mm) | 5"X5"X3/8" THK. |
| PSB3C | 30" (762 mm) | UP TO 72" (1829 mm) | 6"X6"X1/2" THK. |

| CAT. # | LENGTH | FOR POST HEIGHT | SIZE*** |
|--------|--------------|---------------------|-----------------|
| PSB5A | 12" (305 mm) | UP TO 24" (610 mm) | 5"X5"X3/8" THK. |
| PSB5B | 30" (762 mm) | UP TO 48" (1219 mm) | 5"X5"X3/8" THK. |
| PSB5C | 30" (762 mm) | UP TO 72" (1829 mm) | 6"X6"X1/2" THK. |

| CAT. # | HEIGHT | DESCRIPTION | FOR POST HEIGHT | THICKNESS / GAUGE |
|--------|---------------|------------------|---------------------|--------------------|
| PST1 | 18" (457 mm) | GRADE 50 STEEL | UP TO 36" (914 mm) | 1/8" (3.2 mm) THK. |
| PST2 | 18" (457 mm) | GRADE 50 STEEL | UP TO 48" (1219 mm) | 1/4" (6.3 mm) THK. |
| PST3 | 30" (762 mm) | GRADE 50 STEEL | UP TO 72" (1829 mm) | 1/4" (6.3 mm) THK. |
| PST4 | 30" (762 mm) | 304 GRADE S.STL. | UP TO 72" (1829 mm) | 1/8" (3.2 mm) THK. |
| PST6 | 42" (1067 mm) | GRADE 50 STEEL | SPECIAL CONDITIONS | 1/4" (6.3 mm) THK. |

*** 5" X 5" (127 X 127 mm) X 3/8" (9.5 mm) THK.
6" X 6" (152 X 152 mm) X 1/2" (12.7 mm) THK.

Revisions By:

CRL.

2503 E. Vernon Avenue, Los Angeles, CA 90058-1887
PH (800)-421-6144 FX: 800-857-7501 www.crlaeros.com

Discription:
CRL / AWS
ALUMINUM RECTANGULAR
POST GLASS WINDSCREEN
SYSTEM

Drawn By: RPD

Date: 01/27/14

Scale: AS NOTED

File Name:

CRL-AWS-RectPGW SYS.dwg

Sheet

6