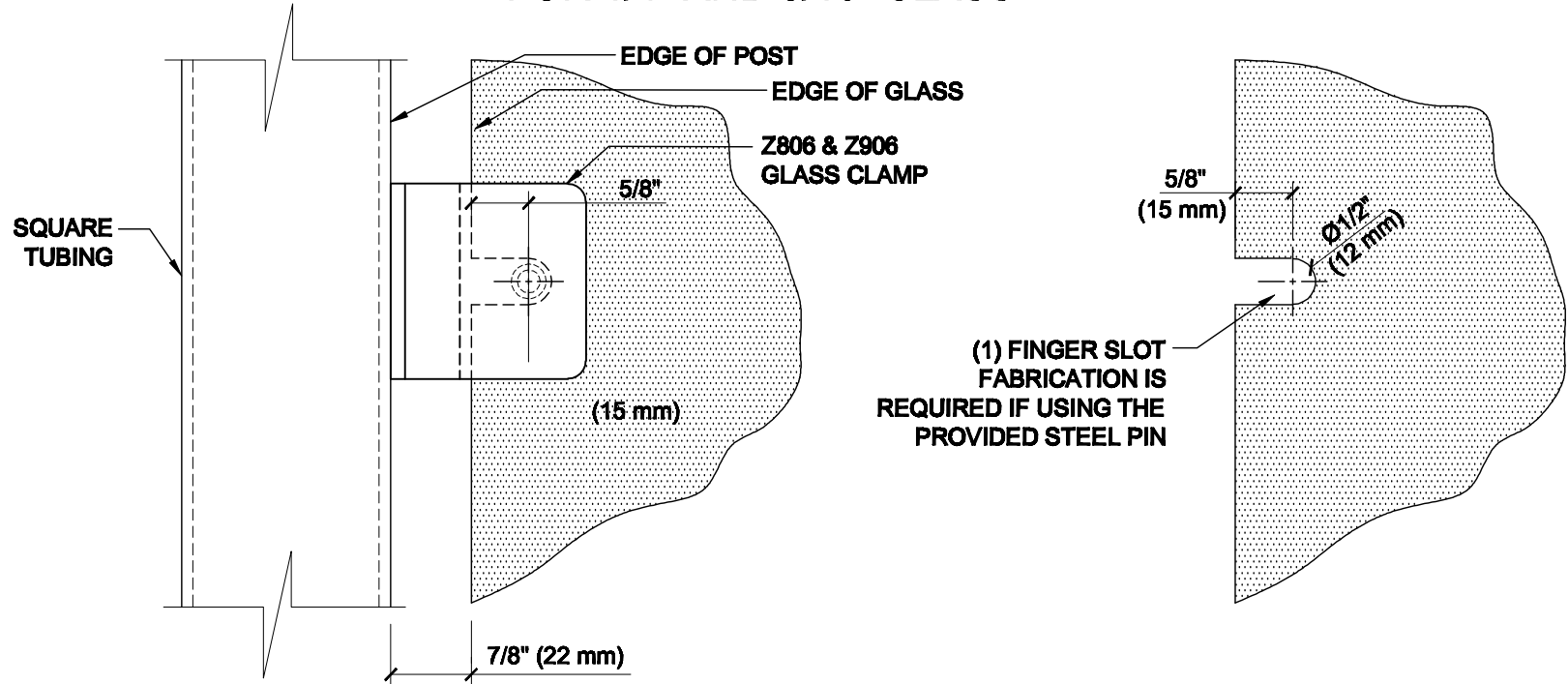


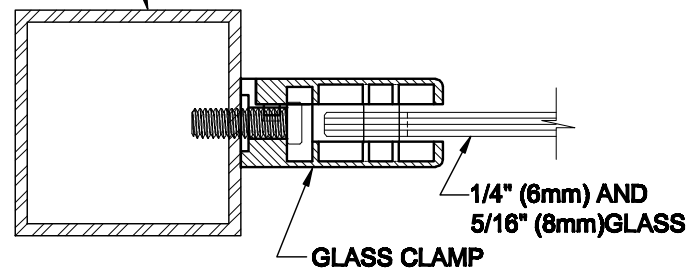
GLASS FABRICATION TEMPLATE FOR THE Z-SERIES SQUARE TYPE FLAT BASE CLAMPS FOR 1/4" AND 5/16" GLASS



(1) FINGER SLOT FABRICATION IS REQUIRED IF USING THE PROVIDED STEEL PIN

ALWAYS USE DIMENSIONS SHOWN ON THE PLAN.
DO NOT SCALE OR DIMENSION ACTUAL DRAWING
TO ENSURE ACCURACY

CRL'S STANDARD RECOMMENDED (GLASS GAP) BETWEEN POST AND EDGE OF GLASS



GLASS FABRICATION TEMPLATE USED FOR:

CATALOG NUMBER
Z806BR
Z806CH
Z806SC
Z806BN
Z806GP
Z806W
Z906BS
Z906PS

SPECIFICATIONS:
GLASS THICKNESS: MODELS FOR 1/4" AND 5/16" (6 TO 8 mm) GLASS.
BASE DESIGN: FLAT BACK
FOR USE WITH: SQUARE TUBING OR OTHER FLAT SURFACES.
MATERIAL: CHOICE OF ZINC CONSTRUCTED OR STAINLESS STEEL. STAINLESS STEEL OR POWDER PAINTED ZINC CLAMPS ARE RECOMMENDED FOR MORE DURABILITY IN EXTERIOR APPLICATIONS.
GLASS FABRICATION: FOR 1/4" (6 mm), 5/16" (8mm), THICK GLASS. 1/2" (12mm) FINGER SLOT REQUIRED IF USING PROVIDED STEEL PIN FOR GLASS SUPPORT
INCLUDES: RUBBER GASKETS AND STEEL PIN (FOR OPTIONAL USE) WITH GROMMET.



ARCHITECTURAL PRODUCTS
 PH: 800-421-6144 FX: 800-262-3299
 WWW.CRLAURENCE.COM

DESCRIPTION:
Z-SERIES SQUARE TYPE FLAT BASE GLASS CLAMP
FOR 1/4" (6mm) & 5/16" (8mm) THICK GLASS

CAT. NO: (SEE CHART)	DATE: 10/23/09
FILE NAME: Z806-Gls Fab REV	SCALE: N.T.S.
DRAWN BY: R.A.	CHECKED BY: C.H.
SHT 1 OF 1	