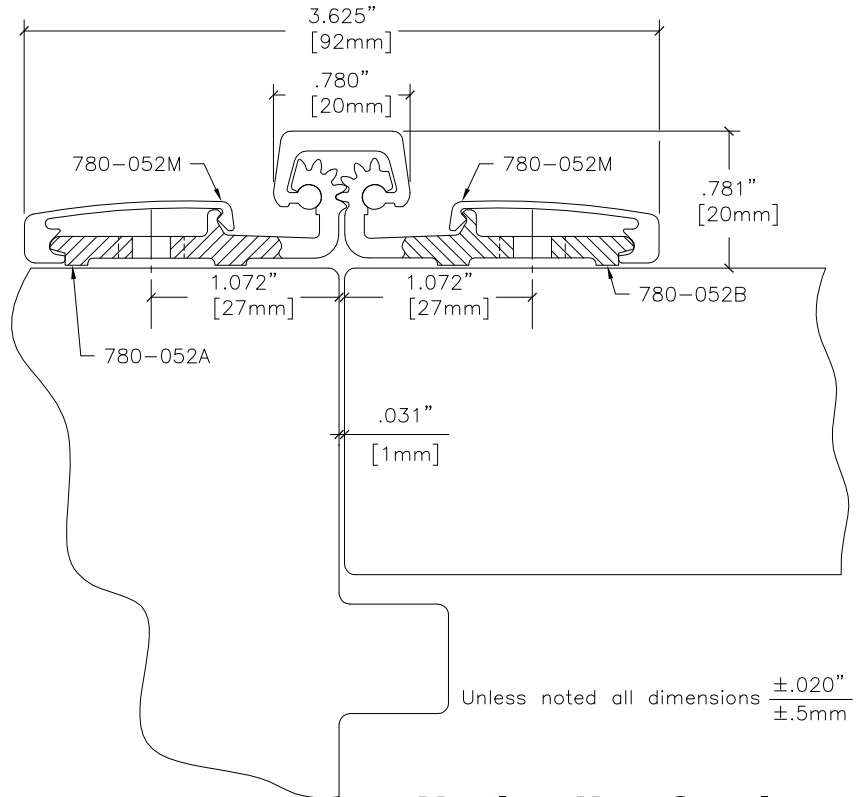
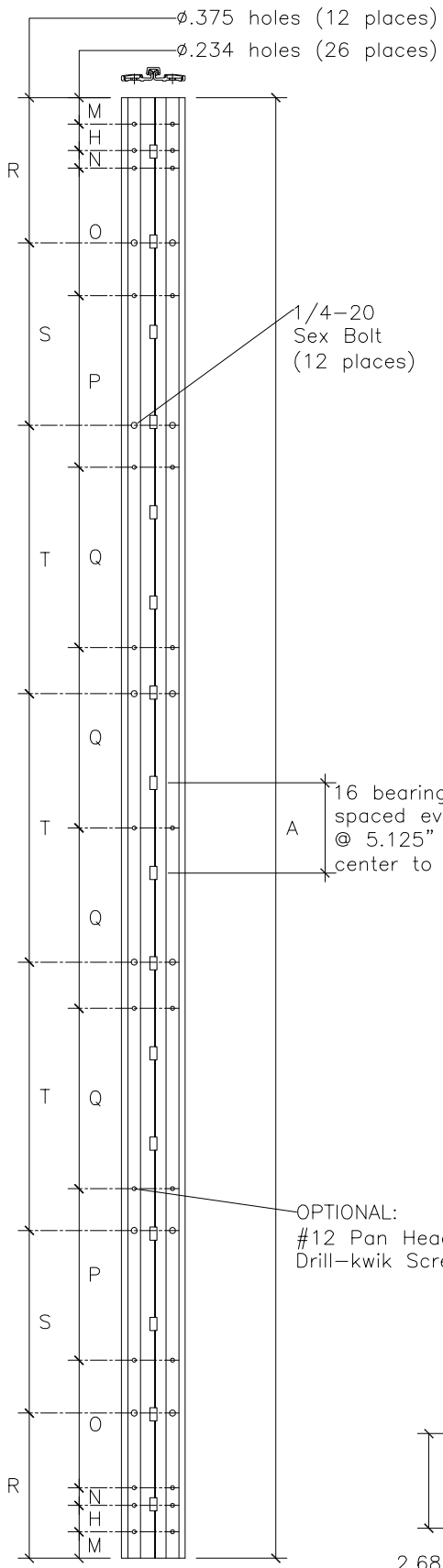



This application is intended for square edged doors only. For beveled edge doors, refer to the General Information section titled Door and Frame Dimensioning - Full Surface Models



Vertical Hole Spacing

Non cumulative tolerances on hole to hole spacing.

| | Metric (mm) | Decimal (in.) |
|---|------------------|------------------|
| A | 2108.0 $\pm.000$ | 82.992 $\pm.000$ |
| H | 38.1 $\pm.025$ | 1.500 $\pm.010$ |
| M | 38.0 $\pm.020$ | 1.496 $\pm.008$ |
| N | 25.4 $\pm.020$ | 1.000 $\pm.008$ |
| O | 184.2 $\pm.020$ | 7.250 $\pm.008$ |
| P | 247.7 $\pm.020$ | 9.750 $\pm.008$ |
| Q | 260.1 $\pm.020$ | 10.250 $\pm.008$ |
| R | 209.5 $\pm.020$ | 8.246 $\pm.008$ |
| S | 263.5 $\pm.020$ | 10.375 $\pm.008$ |
| T | 387.4 $\pm.020$ | 15.250 $\pm.008$ |

| | | | |
|--|--|-------------|------------|
|  | HAGER COMPANIES HIGHWAY 78 WEST P.O. BOX 3368 OXFORD, ALABAMA 36203 | | |
| | <h2>780-057 83" SD</h2> | | |
| DATE 01-15-02 | REV. 08-19-02 | DR. KBJ | SCALE None |
| FILENAME z:\roton\template\standard\780-053.dwg | | | |
| DRAWING NO. | | 780057083SD | |