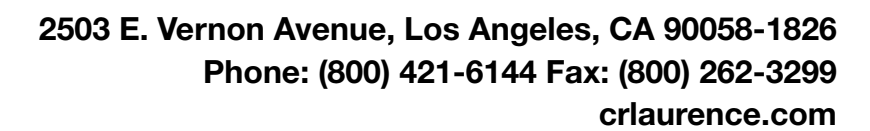


Models C6304, C6305, and C6306 Deluxe Packaged Showcase, and Model C4030 with D3049A Mullion Custom Packaged Showcase



**IMPORTANT:** When moving the Showcase, use two people, one at each end to evenly support the weight. Lift the unit from the base so that it can be moved without dragging. Do not slide.

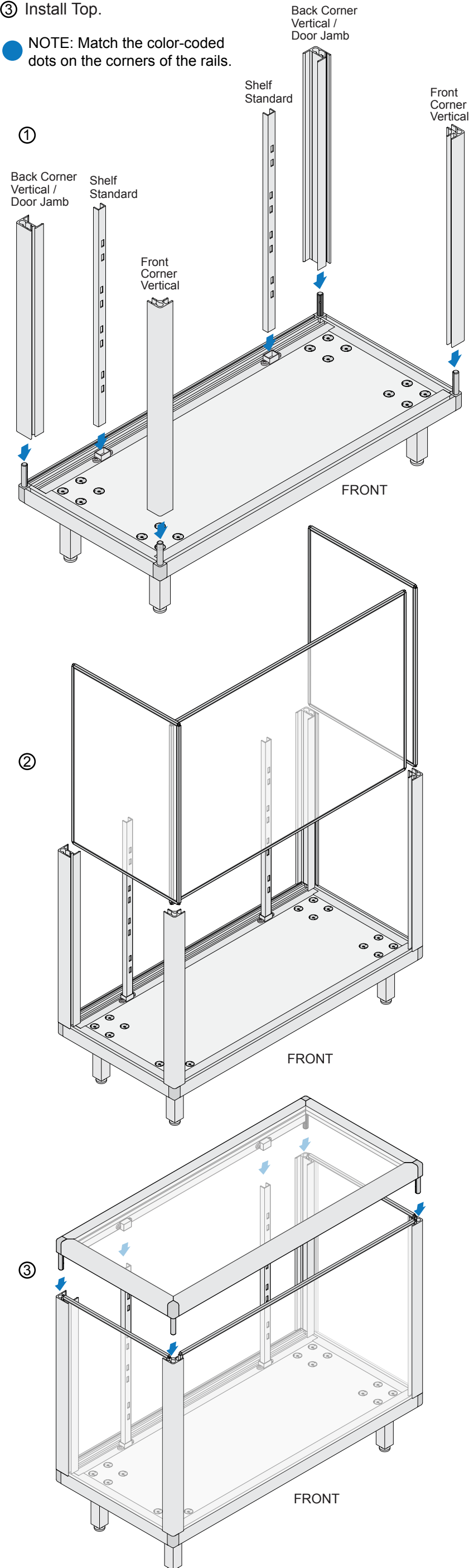
## QSL0231 REV A



#### Step 4: Assemble Sides and Install Top

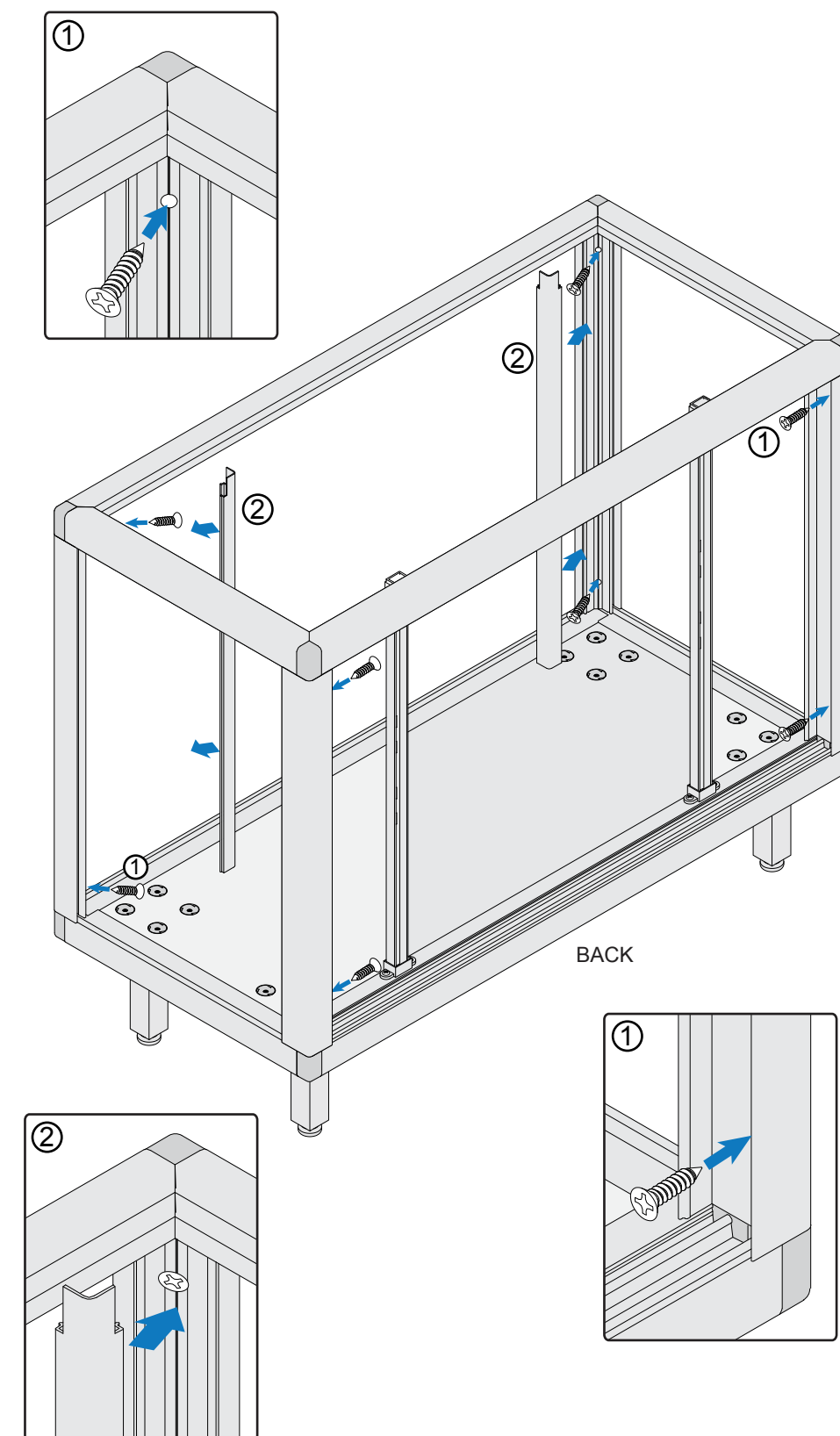
- 1 Install Front and Back Corner Verticals.
- 2 Slide Front and Side Glass Panels into Verticals.
- 3 Install Top.

NOTE: Match the color-coded dots on the corners of the rails.



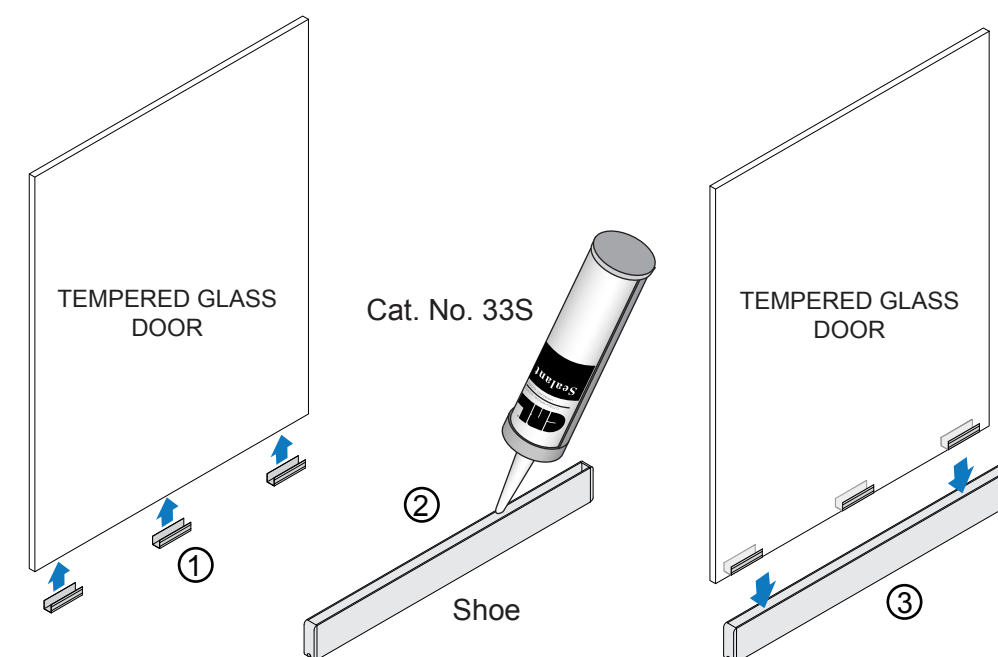
#### Step 5: Install Trim Covers

- 1 Secure Back and Front Verticals to Corner Connectors with D134 Screws.
- 2 Snap Trim Covers into Front Corner Verticals.

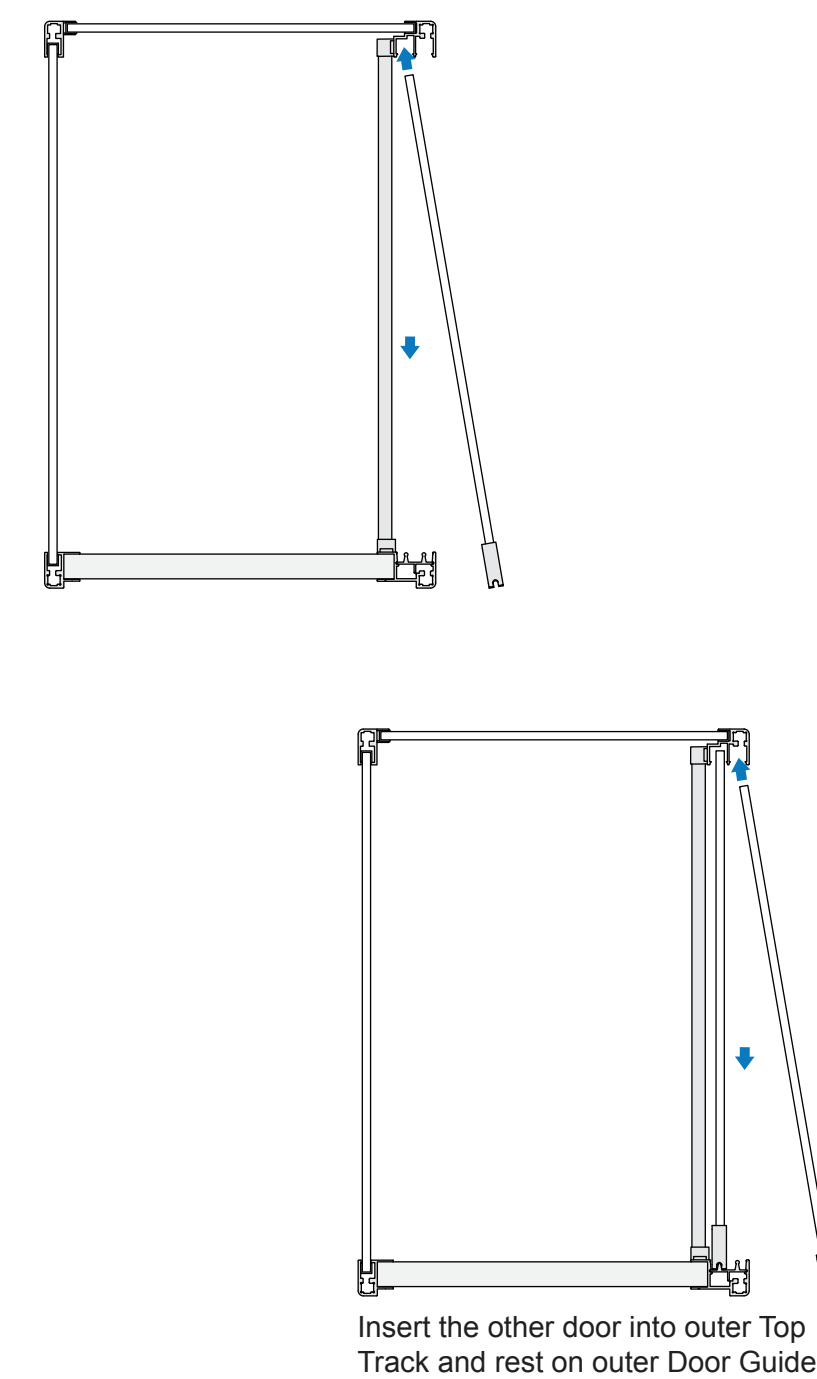


#### Step 6: Assemble Doors

- 1 Fit Gaskets on bottom of glass.
- 2 Run a bead of Cat. No. 33S Silicone Sealant in Door Shoe.
- 3 Fit glass into Door Shoe.

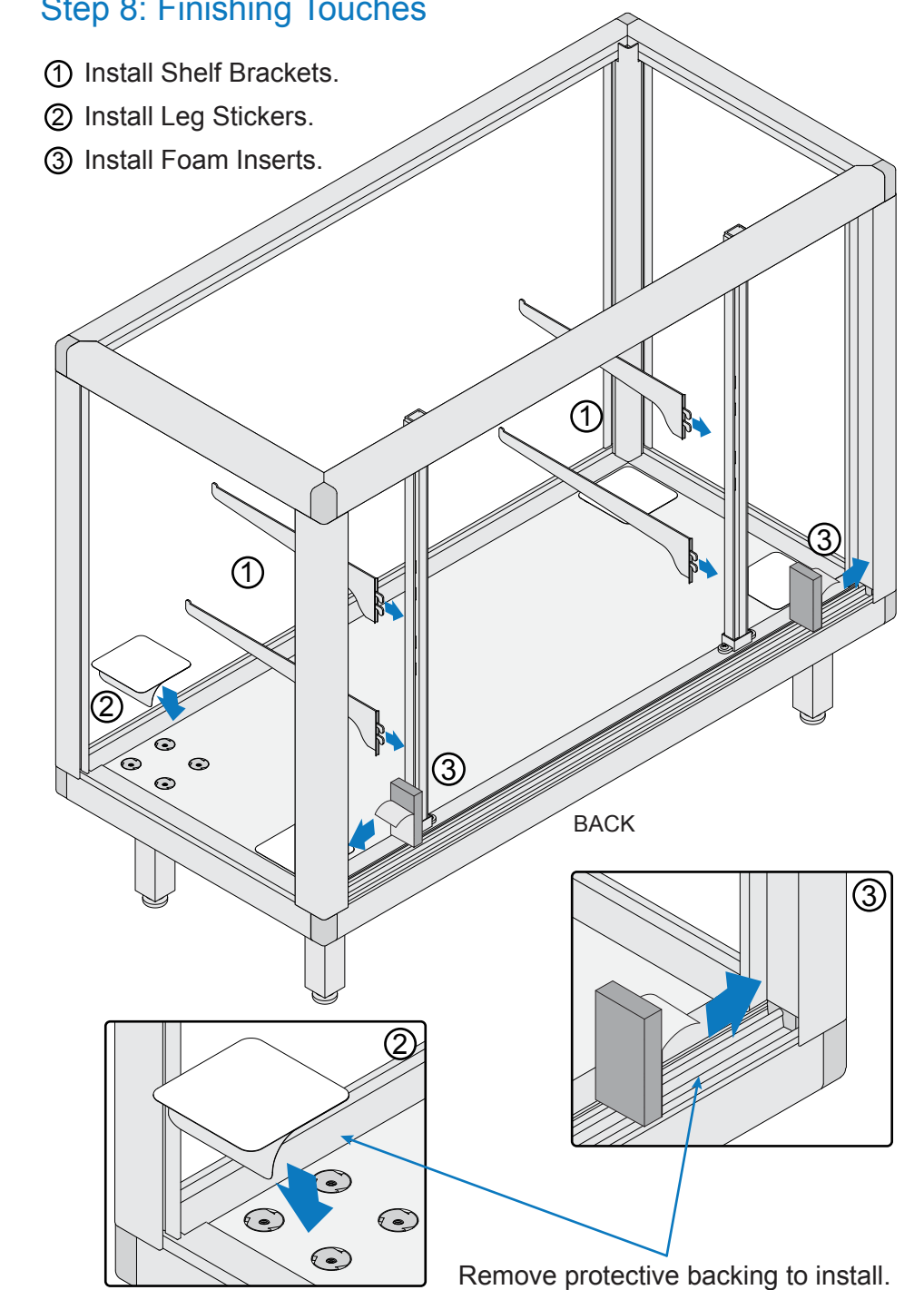


#### Step 7: Install Doors



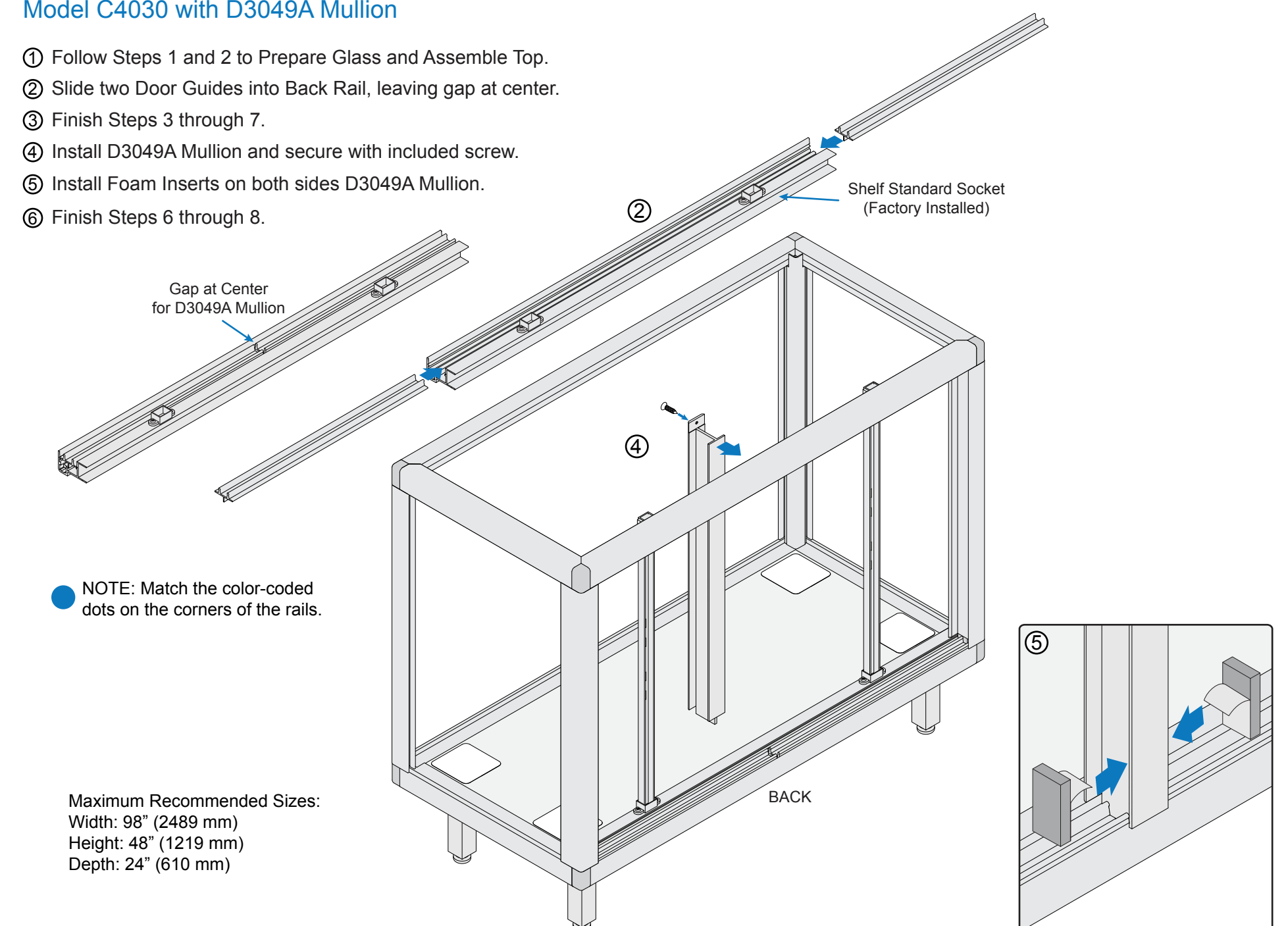
#### Step 8: Finishing Touches

- 1 Install Shelf Brackets.
- 2 Install Leg Stickers.
- 3 Install Foam Inserts.



#### Model C4030 with D3049A Mullion

- 1 Follow Steps 1 and 2 to Prepare Glass and Assemble Top.
- 2 Slide two Door Guides into Back Rail, leaving gap at center.
- 3 Finish Steps 3 through 7.
- 4 Install D3049A Mullion and secure with included screw.
- 5 Install Foam Inserts on both sides D3049A Mullion.
- 6 Finish Steps 6 through 8.



NOTE: Match the color-coded dots on the corners of the rails.

Maximum Recommended Sizes:  
Width: 98" (2489 mm)  
Height: 48" (1219 mm)  
Depth: 24" (610 mm)