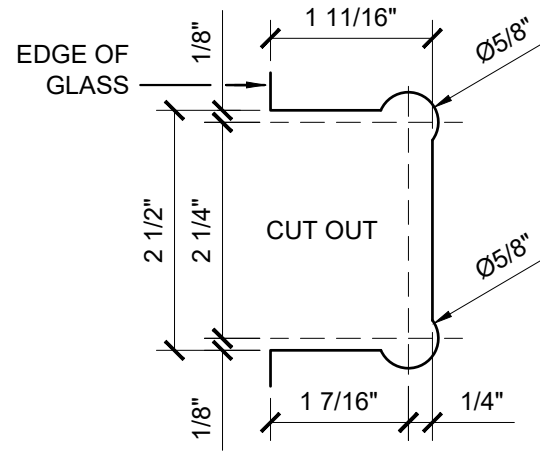
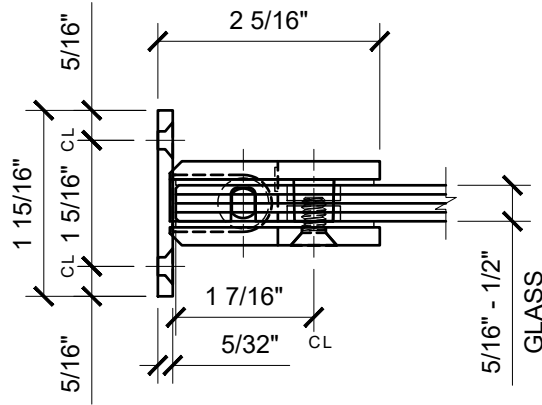


USE OF GASKETS

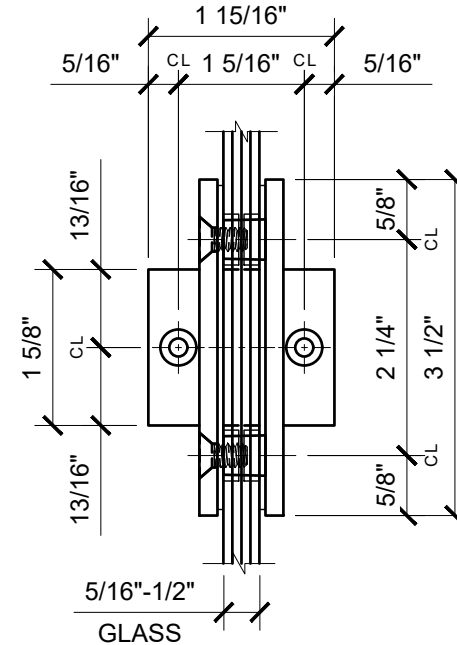
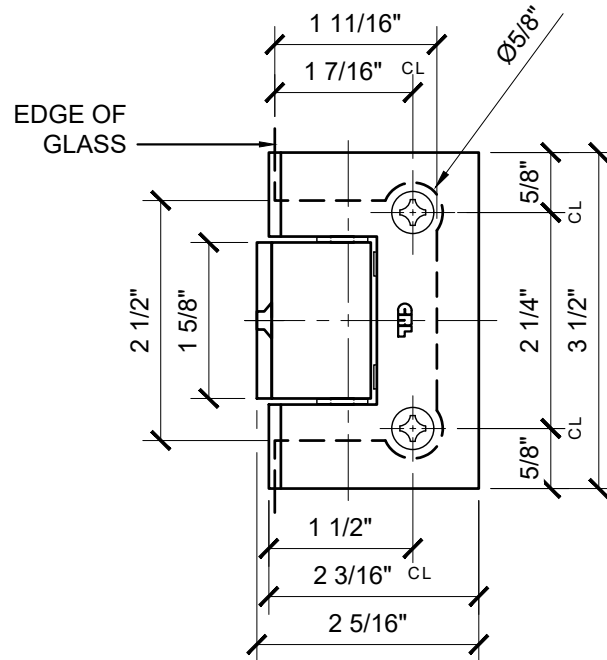
FOR 5/16" (8mm) GLASS: USE ONE THICK GASKET ON EACH SIDE

FOR 3/8" (10mm) GLASS: USE ONE THICK GASKET ON EACH SIDE

FOR 1/2" (12mm) GLASS: USE ONE THIN GASKET ON EACH SIDE



GLASS FABRICATION TEMPLATE



CATALOG NUMBER	FINISH
GEN280CH	CHROME
GEN280BR	BRASS
GEN280ORB	OIL RUBBED BRONZE
GEN280BN	BRUSHED NICKEL
GEN280BSC	BRUSHED SATIN CHROME
GEN280PN	POLISHED NICKEL

GEN280XX - CRL GENEVA SERIES 180 DEGREE PONY WALL MOUNT HINGE

DATE: 6/20/17
SCALE: 6"=1'-0"
DRAWN BY: VM

DESCRIPTION: CRL GEN280
GENEVA 280 SERIES 180 DEGREE
PONY WALL MOUNT HINGE

C.R.LAURENCE CO. ARCHITECTURAL PRODUCTS
2503 E. Vernon Avenue, Los Angeles, C.A 90058-1897
PH (800)-421-6144 FX: 800-587-7501 www.crlaurence.com

