

CRL SERIES 100 CHANNEL FRAMED MIRROR WITH FLOAT PLATE GLASS

DESCRIPTION

Series 100 Channel Framed Mirror comes with a bright polished stainless steel frame for years of use and is supplied with an internal locking system ideal for institutional and commercial installations. Mounting bracket secures directly to wall and is hidden after installation. Series 100 Mirror complies with Federal Specification DD-M00411B, Style E, Grade 2.

TECHNICAL DATA

Mirror: 5mm thick float plate glass, electro-copper backed to prevent silver spoilage.
Backing: Full-sized expanded polystyrene sheet.
Back Plates: 22 gauge galvanized steel with punched key slots.
Wall Bracket: 22 gauge galvanized steel with shoulder rivets.
Lock Springs: 24 gauge galvanized steel.
Channel: 1/2" x 1/2" x 1/2" bright polished stainless steel with mitered corners.

NOTES

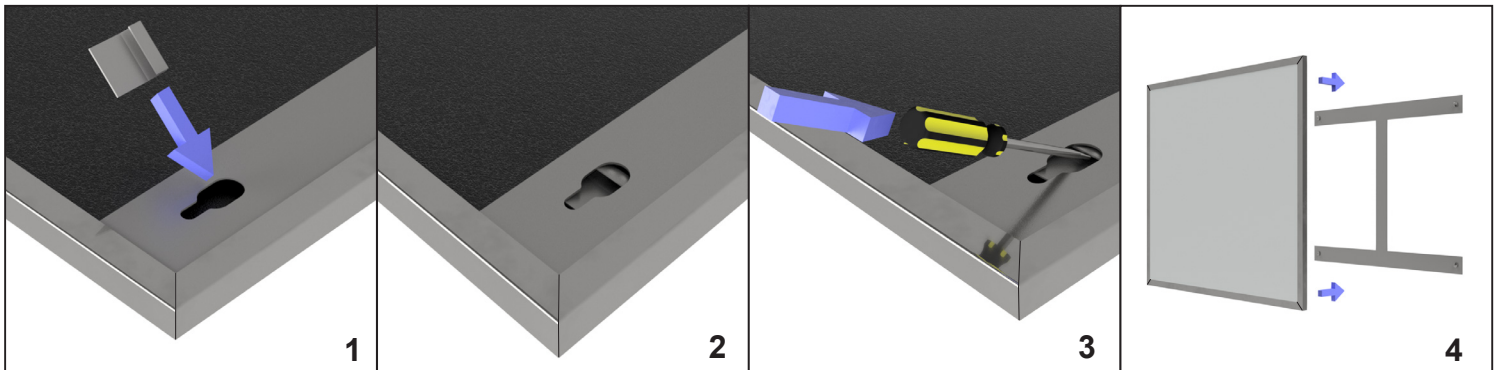
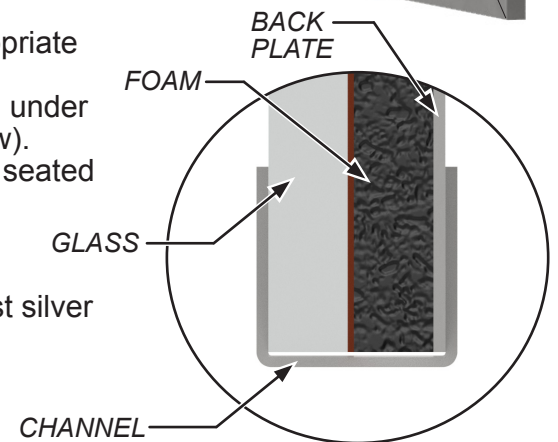
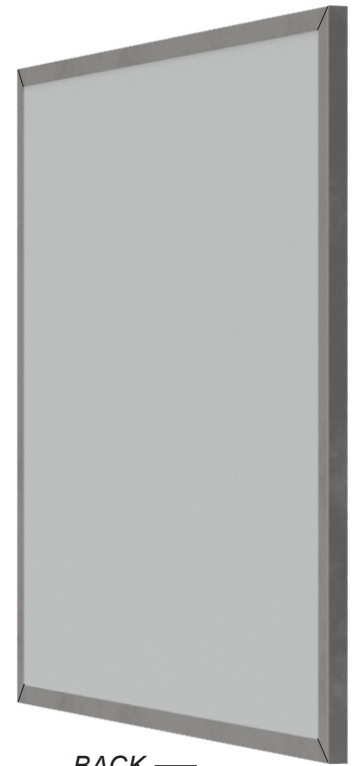
1. Mirror sizes indicates nominal glass size. Actual finished mirror sizes are 1/4" larger.
2. Always order mirror by width first, then height.

INSTALLATION

1. Attach mounting bracket to wall using mechanical fasteners appropriate for existing wall conditions.
2. Place mirror face down on flat surface and slide snap-lock springs under the neck of the key slots on the bottom channel (see 1,2 & 3 below).
3. Mount mirror on wall bracket making sure shoulder rivets are fully seated in the neck portion of the key slots (see4).

GUARANTEE

100 Series Channel Framed Mirror is guaranteed for ten years against silver spoilage with proper maintenance.



Phone: (800) 421-6144 • Fax: (800) 587-7501
crlaurence.com • usalum.com • crl-arch.com