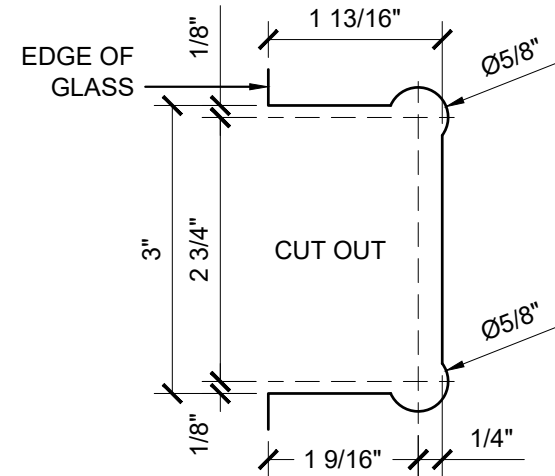
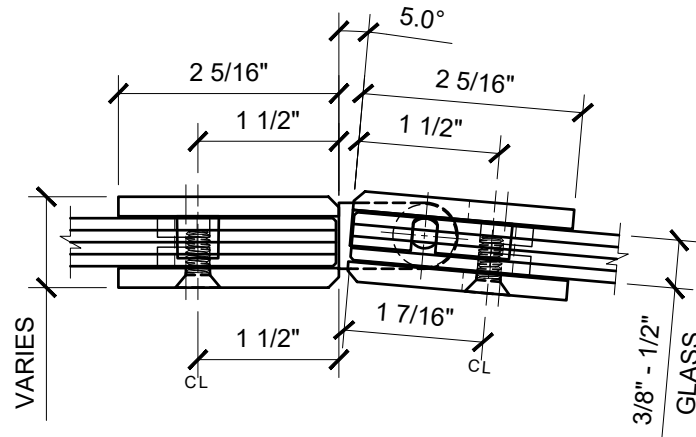
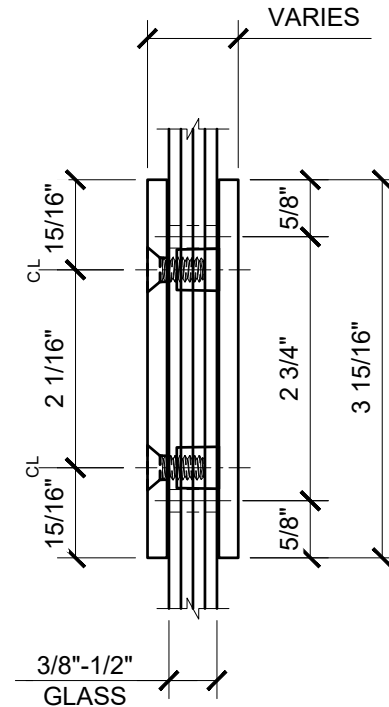
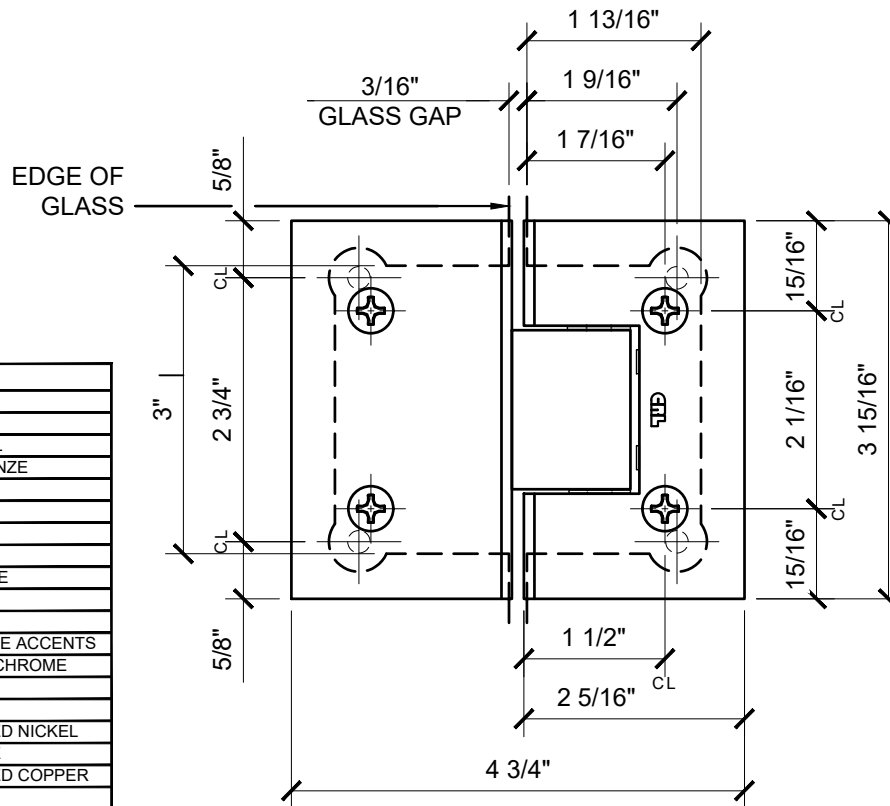


USE OF GASKETS

FOR 3/8" (10mm) GLASS: USE ONE THICK GASKET ON EACH SIDE  
 FOR 1/2" (12mm) GLASS: USE ONE THIN GASKET ON EACH SIDE



GLASS FABRICATION TEMPLATE



CATALOG NUMBER	FINISH
V1E580CH	CHROME
V1E580BN	BRUSHED NICKEL
V1E580PN	POLISHED NICKEL
V1E580ORB	OIL RUBBED BRONZE
V1E580BR	BRASS
V1E580MBL	MATTE BLACK
V1E580SB	SATIN BRASS
V1E580SN	SATIN NICKEL
V1E580BBRZ	BRUSHED BRONZE
V1E580SC	SATIN CHROME
V1E580ABR	ANTIQUE BRASS
V1E580BL	BLACK W/ CHROME ACCENTS
V1E580BSC	BRUSHED SATIN CHROME
V1E580GB	GOLD PLATED
V1E580AW	ALL WHITE
V1E580ABN	ANTIQUE BRUSHED NICKEL
V1E580ABRZ	ANTIQUE BRONZE
V1E580ABC0	ANTIQUE BRUSHED COPPER
V1E580GM	GUN METAL
V1E580CBA	CHROME W/ BRASS ACCENTS
V1E580BC0	BRUSHED COPPER
V1E580ABL	ALL BLACK
V1E580WC	WHITE W/ CHROME ACCENTS

V1E580XX - CRL VIENNA SERIES 5 DEGREE GLASS TO GLASS HINGE

DATE: 11/20/17  
 SCALE: 6"=1'-0"  
 DRAWN BY: VM

DESCRIPTION: CRL V1E580  
 VIENNA SERIES 5 DEGREE  
 GLASS TO GLASS HINGE

C.R.LAURENCE CO. ARCHITECTURAL PRODUCTS  
 2503 E. Vernon Avenue, Los Angeles, CA 90058-1897  
 PH (800)-421-6144 FX: 800-587-7501 www.crlaurence.com

