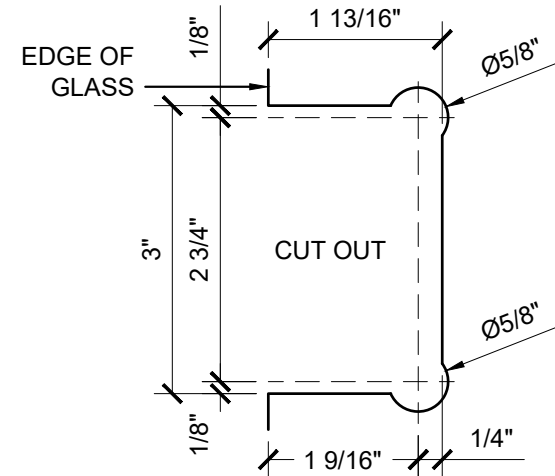
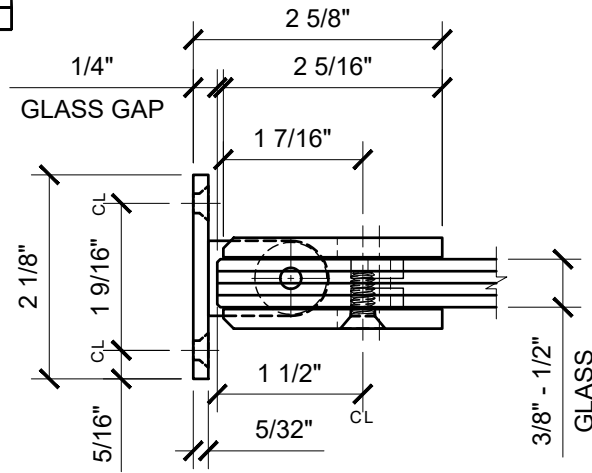
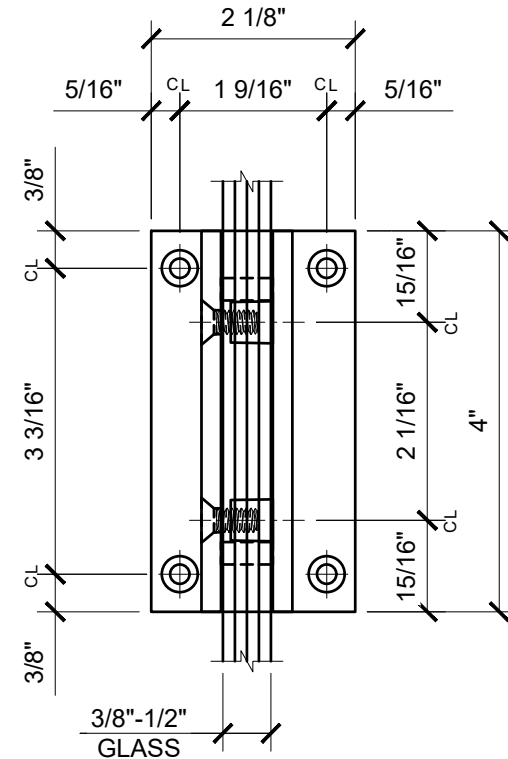
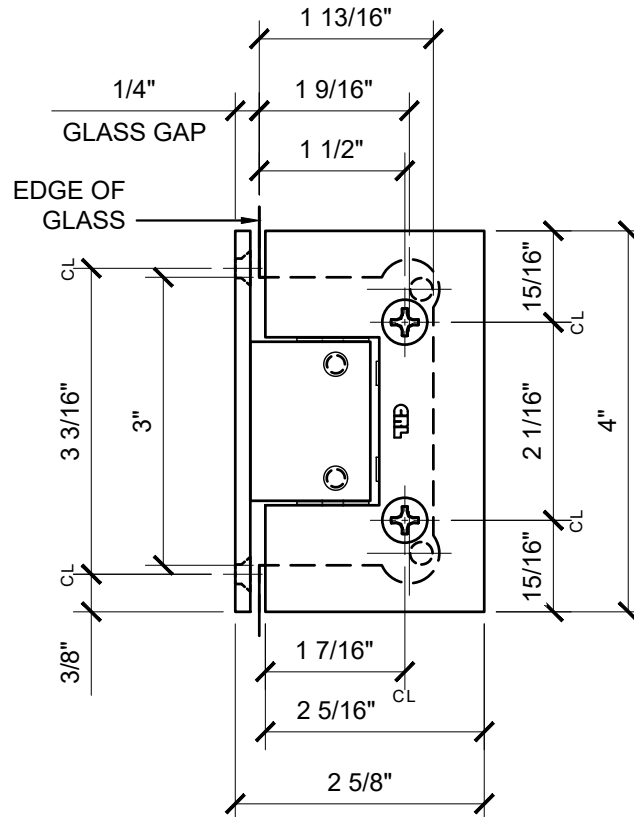


USE OF GASKETS

FOR 3/8" (10mm) GLASS: USE ONE THICK GASKET ON EACH SIDE
 FOR 1/2" (12mm) GLASS: USE ONE THIN GASKET ON EACH SIDE



GLASS FABRICATION TEMPLATE



CATALOG NUMBER	FINISH
V1E337CH	CHROME
V1E337MBL	MATTE BLACK
V1E337BR	BRASS
V1E3370RB	OIL RUBBED BRONZE
V1E337ABC0	ANTIQUE BRUSHED COPPER
V1E337ABL	ALL BLACK
V1E337ABN	ANTIQUE BRUSHED NICKEL
V1E337ABR	ANTIQUE BRASS
V1E337ABRZ	ANTIQUE BRONZE
V1E337AW	ALL WHITE
V1E337BBRZ	BRUSHED BRONZE
V1E337BC0	BRUSHED COPPER
V1E337BL	BLACK W/ CHROME ACCENTS
V1E337BN	BRUSHED NICKEL
V1E337BSC	BRUSHED SATIN CHROME
V1E337CBA	CHROME W/ BRASS ACCENTS
V1E337GM	GUN METAL
V1E337GB	GOLD PLATED
V1E337PN	POLISHED NICKEL
V1E337SB	SATIN BRASS
V1E337SC	SATIN CHROME
V1E337SN	SATIN NICKEL
V1E337WC	WHITE W/ CHROME ACCENTS

V1EN337- CRL VIENNA SERIES WALL MOUNT FULL BACK PLATE HINGE ADJ.

DATE: 11/22/17
 SCALE: 6"=1'-0"
 DRAWN BY: VM

DESCRIPTION: CRL V1E337 —
 VIENNA SERIES ADJUSTABLE
 WALL MOUNT FULL BACK PLATE HINGE

C.R.LAURENCE CO. ARCHITECTURAL PRODUCTS
 2503 E. Vernon Avenue, Los Angeles, C.A 90058-1897
 PH (800)-421-6144 FX: 800-587-7501 www.crlaurence.com

