



### Fallbrook Door Frame Profiles

Door Jamb/Header at Sidelite/Transom



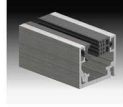
Door Jamb/Header



Glass door: 5/16-1/2" | 8-12 mm  
 Glass side panel: 5/16-5/8" | 8-16 mm  
 Stock finishes: matte black, satin anodized  
 Gasket: TPE in gray or black

### Fallbrook Fixed Glass Profiles

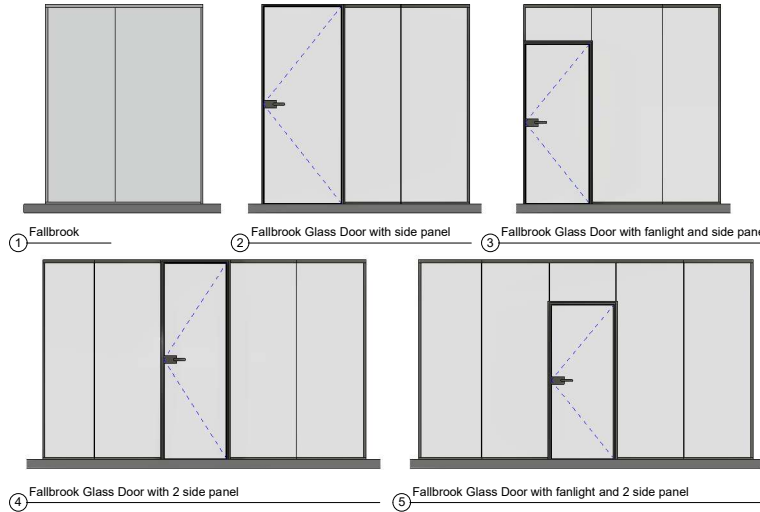
Wall and Sill



Header



Glass: 5/16-5/8" | 8-16 mm  
 Stock finishes: matte black, satin anodized  
 Gasket: TPE in gray or black



[www.crlaurence.com](http://www.crlaurence.com)

#### Create inspiring interiors with a distinct floating frame.

The Fallbrook Interior Partition System offers an imaginative design unique to framed partition systems. A slim floating door frame produces an eye-catching, minimalist aesthetic and all-glass spans that enhance transparency and daylighting. Low-profile door hardware and sidelite u-channels complete the exceptional look.

Several configurations are available with the Fallbrook Interior Partition System. Glass doors can be specified up to 10-feet high and door hinges come in square or round profiles. Door-to-wall and door-to-glass frame sets provide greater installation flexibility.

#### Features & Benefits

- Unique floating door frame
- Standard or self-closing pivot door options
- Dry-glazed system for easy installation
- Height adjustable hinges, no drilling required
- Door-to-wall and door-to-glass frame sets
- Unique floating door transom available to create floor-to-ceiling glass spans
- Maximum door height: 10 feet
- Maximum door width: 36"
- For 5/16", 3/8", and 1/2" monolithic tempered glass
- STC rating up to 34 depending on your unique design

### Fallbrook Interior Partition System







