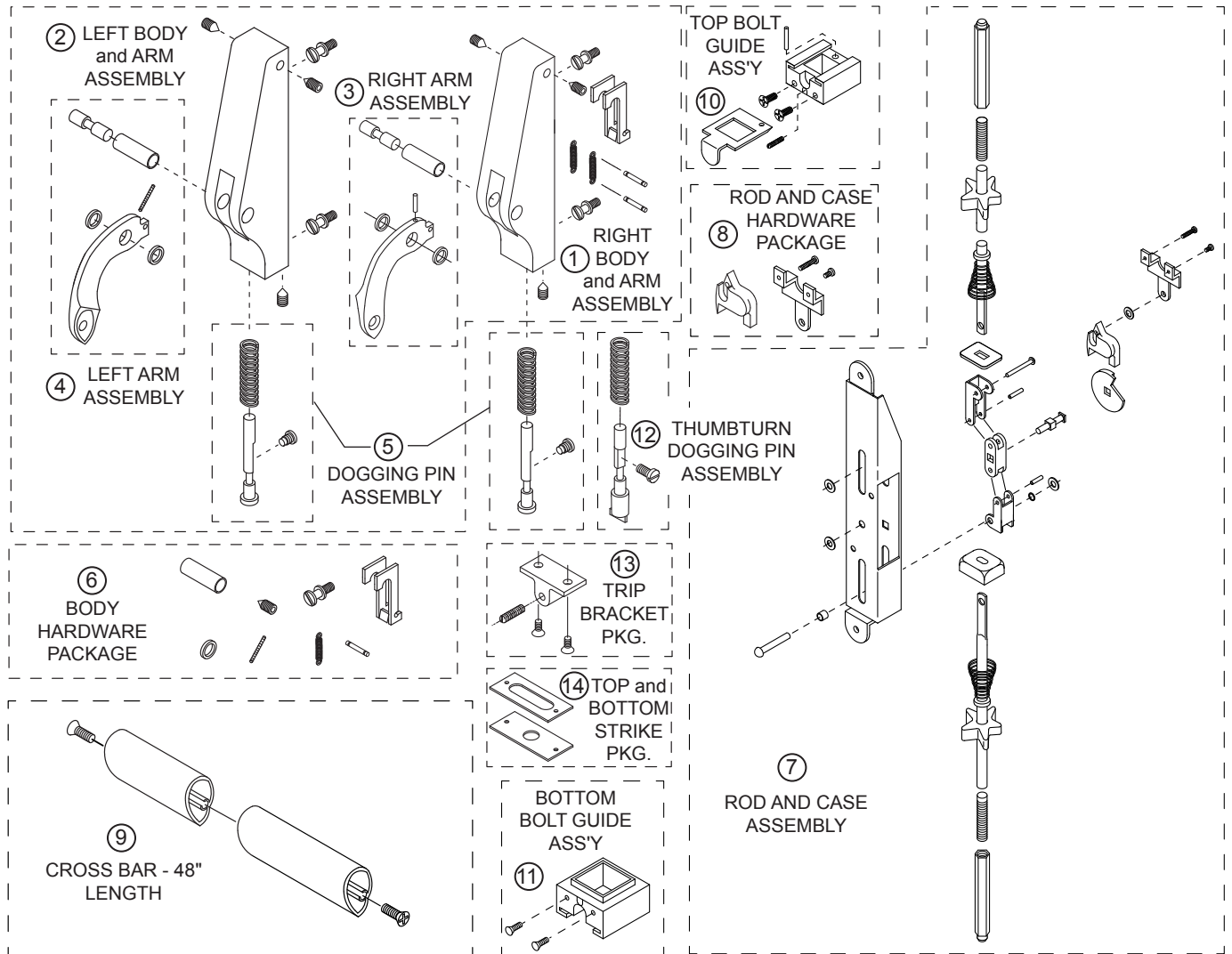


PACKAGED PARTS AVAILABLE



| Assembly No. | Part No. | Description |
|--------------|----------|------------------------------------|
| 1 | 30982 | RIGHT SIDE BODY AND ARM ASSEMBLY |
| 2 | 30983 | LEFT SIDE BODY AND ARM ASSEMBLY |
| 3 | 301243 | RIGHT SIDE ARM ASSEMBLY |
| 4 | 301242 | LEFT SIDE ARM ASSEMBLY |
| 5 | 301115 | STANDARD DOGGING PIN ASSEMBLY |
| 6 | 301409 | BODY HARDWARE PACKAGE |
| 7 | 30915J | ROD AND CASE ASSEMBLY - 7/0 |
| 8 | 30916 | ROD AND CASE HARDWARE PACKAGE |
| 9 | 30733PKG | 48" (1219 mm) CROSSBAR WITH SCREWS |
| 10 | 30934 | TOP BOLT GUIDE ASSEMBLY |
| 11 | 30320 | BOTTOM BOLT GUIDE ASSEMBLY |
| 12 | 301117 | DOGGING PIN ASSEMBLY - THUMBTURN |
| 13 | 30824 | TRIP BRACKET PACKAGE |
| 14 | 301084 | STRIKE PACKAGE - TOP AND BOTTOM |