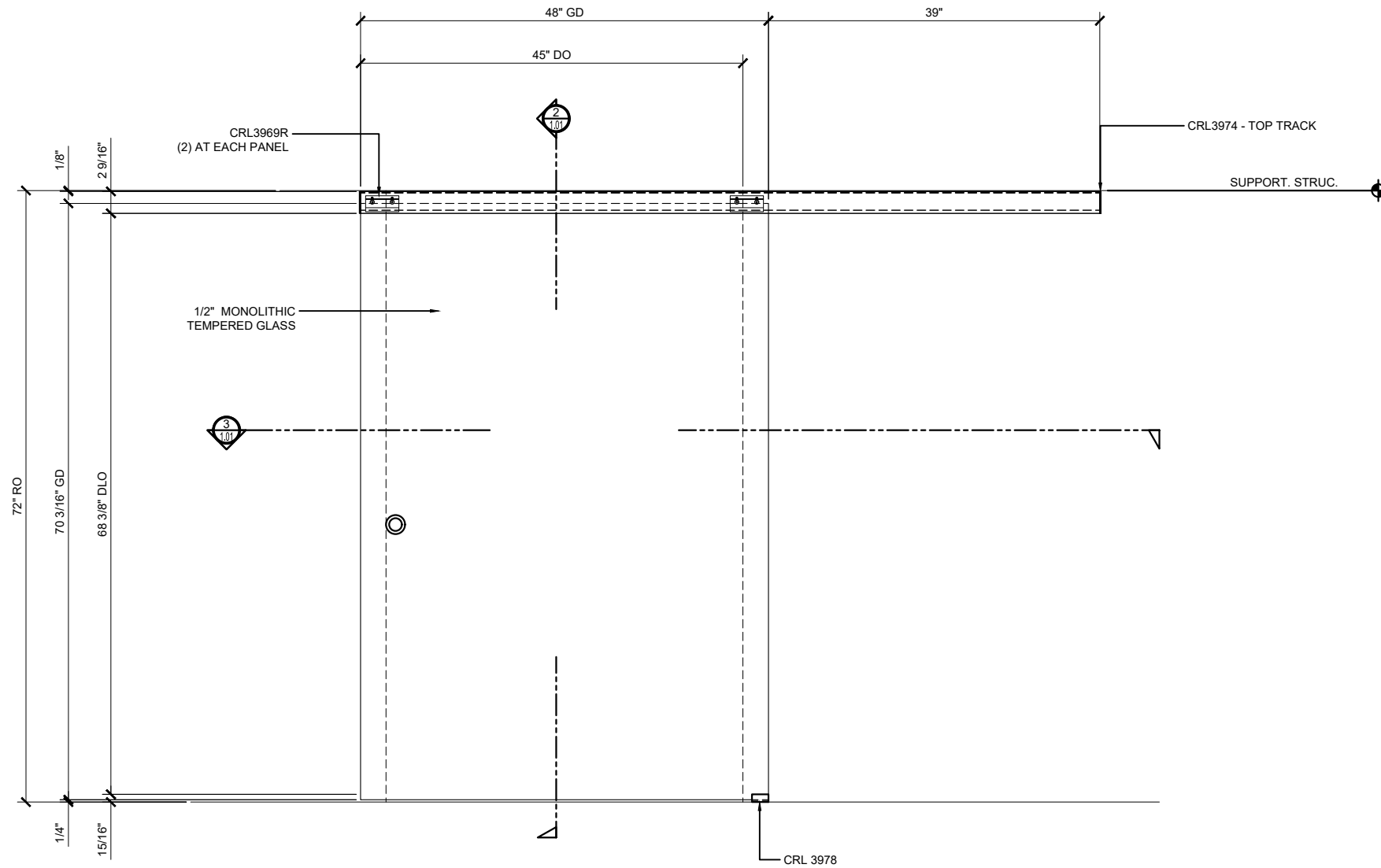


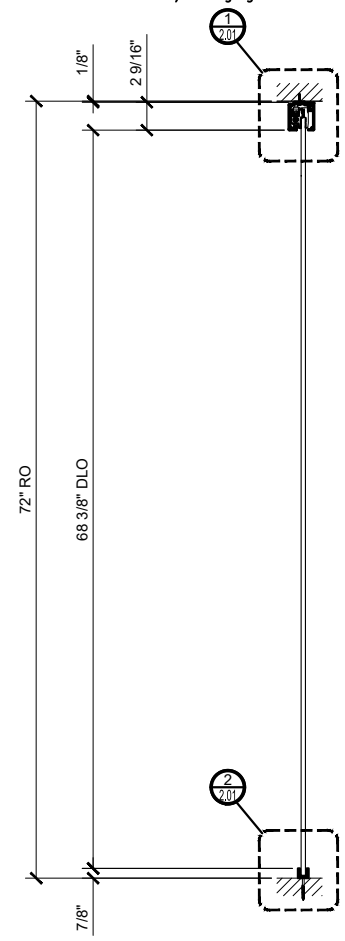
# CRL 280/285 SERIES TOP HUNG SLIDING DOOR CRL2812 AND CRL28512 SYSTEM CEILING MOUNT

- \* FOR 3/8" TO 1/2" (10 TO 12 MM) TEMPERED GLASS
- \* MOUNT TO STRUCTURAL CEILING AND WALL
- \* AVAILABLE WITH OR WITHOUT "SOFTBRAKE" BRAKING SYSTEM
- \* RATED FOR DOORS WEIGHING UP TO 176 POUNDS (80 KG)
- \* NO NOTCHES OR HOLES REQUIRED IN THE GLASS FOR INSTALLATION
- \* SATIN ANODIZED AND BRUSHED STAINLESS ANODIZED FINISHES AVAILABLE

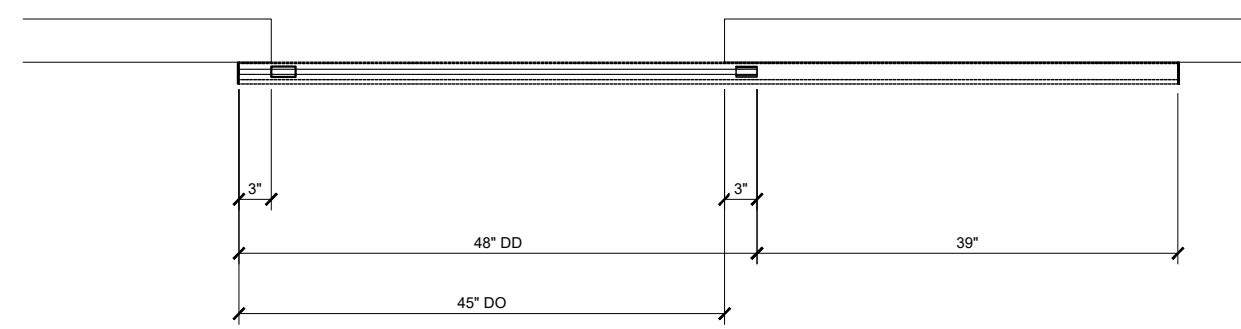
NOTE: FOR A DETAILED LISTING OF THE COMPONENTS OF EACH KIT GO TO [crlaurence.com/sliding-glass-doors](http://crlaurence.com/sliding-glass-doors)



① CRL2812 AND CRL 28512 - ELEVATION  
1 1/2"=1'-0"



② SLIDER SECTION  
1 1/2"=1'-0"

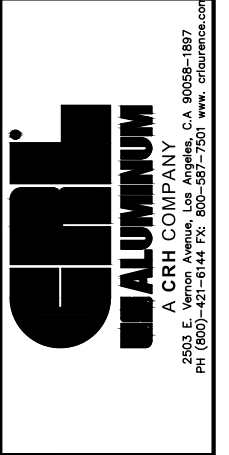


③ CRL2812 AND CRL 28512 - PLAN  
1 1/2"=1'-0"

**STRUCTURAL DISCLAIMER:**  
ALL CUSTOMERS WHO IN ANY WAY UTILIZE THIS PRODUCT ARE SOLELY RESPONSIBLE TO CONSULT A STRUCTURAL ENGINEER TO DETERMINE THE SUITABILITY OF THE PRODUCT FOR THE INTENDED USE AND SITE CONDITIONS. ALL INSTALLERS MUST BE QUALIFIED AND HAVE PROFESSIONAL KNOWLEDGE ABOUT COMPLIANCE WITH LOCAL, STATE AND FEDERAL REGULATIONS, SAFETY FACTORS, AND THE APPROPRIATE CHOICE OF FIXING MATERIAL AND PROCEDURES.

STANDARD ABBREVIATIONS	
RO	ROUGH OPENING
FD	FRAME DIMENSION
DLO	DAYLIGHT OPENING
DO	DOOR OPENING
DD	DOOR DIMENSION
GD	GLASS DIMENSION
DP	DIMENSION POINT

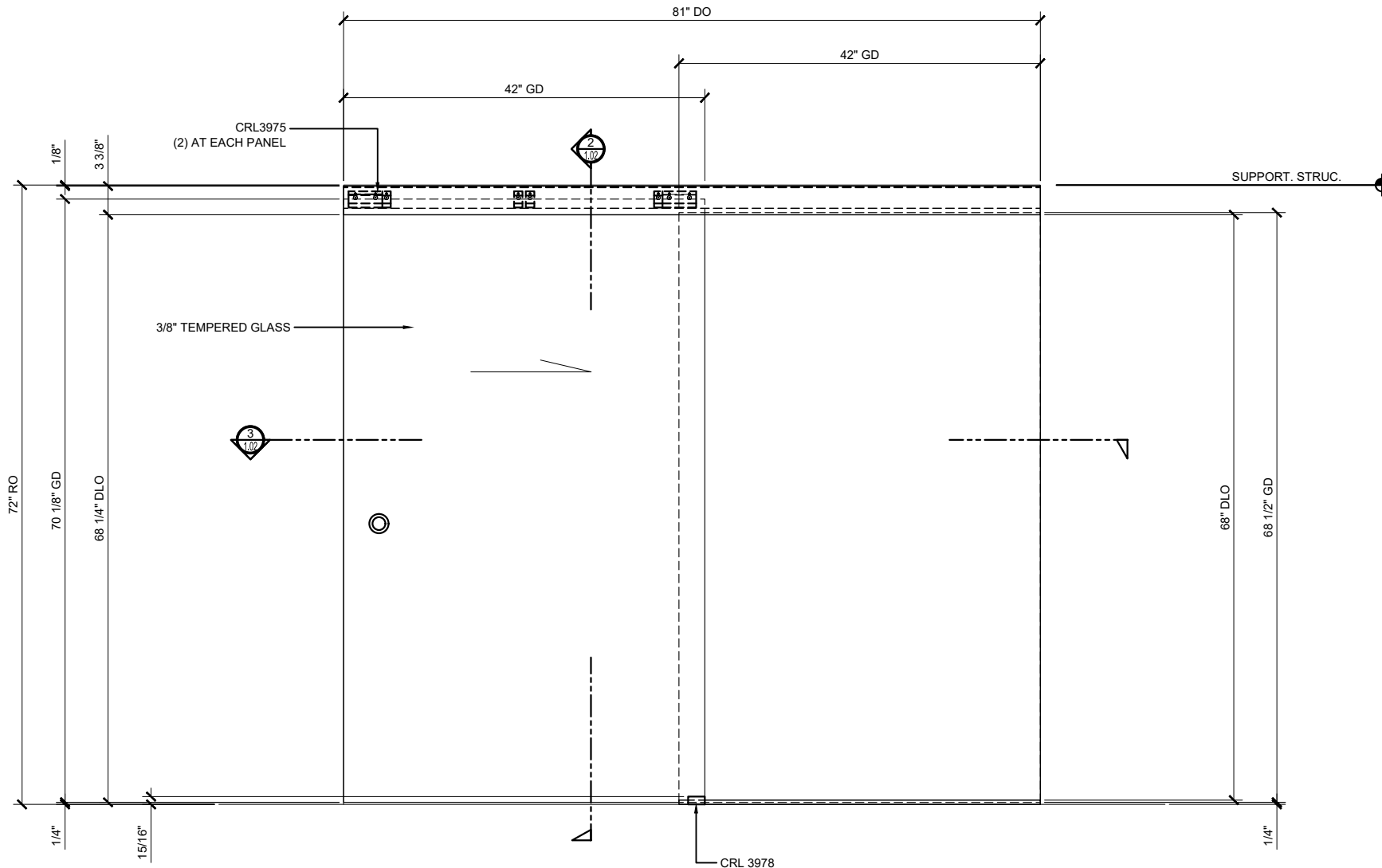
Revisions By:



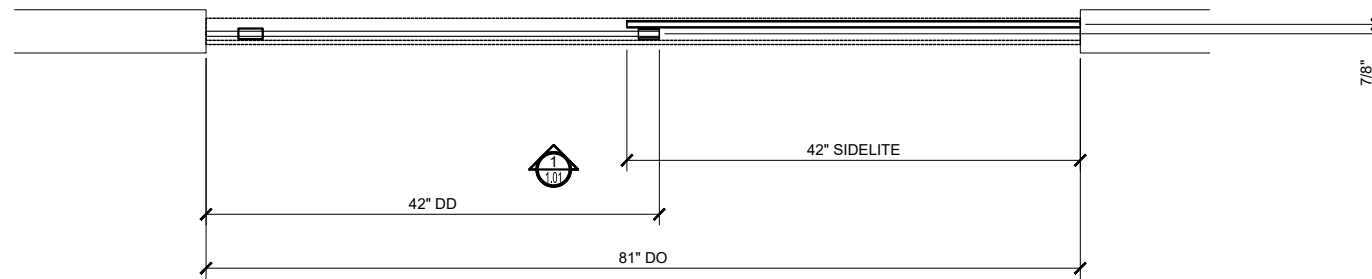
Description:  
CRL280/285 SERIES  
TOP HUNG SINGLE TRACK  
CEILING MOUNT SLIDING DOOR  
FOR 3/8" AND 1/2" GLASS

Drawn By: GM  
Date: 04/24/19  
Scale: AS NOTED  
File Name: CRL280\_Top\_Hung\_Slid\_Doors.dwg

# CRL 280/285 SERIES TOP HUNG SLIDING DOOR CRL2812F AND CRL28512F SYSTEM CEILING MOUNT



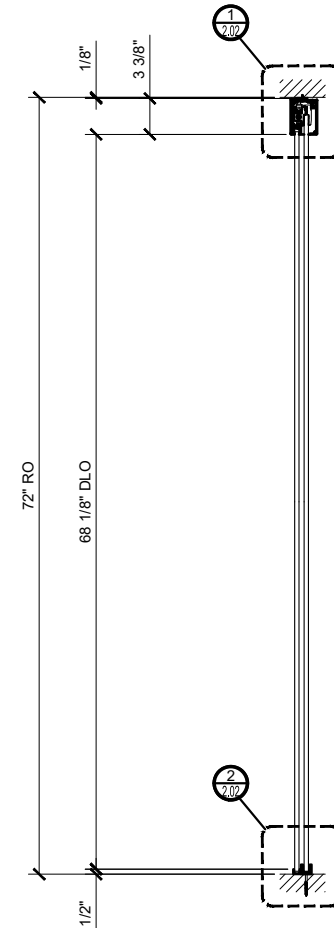
① CRL2812F AND CRL 28512F - ELEVATION  
1 1/2"=1'-0"



③ CRL2812F AND CRL 28512F - PLAN  
1 1/2"=1'-0"

- \* FOR 3/8" TO 1/2" (10 TO 12 MM) TEMPERED GLASS
- \* MOUNT TO STRUCTURAL CEILING AND WALL
- \* AVAILABLE WITH OR WITHOUT "SOFTBRAKE" BRAKING SYSTEM
- \* RATED FOR DOORS WEIGHING UP TO 176 POUNDS (80 KG)
- \* NO NOTCHES OR HOLES REQUIRED IN THE GLASS FOR INSTALLATION
- \* SATIN ANODIZED AND BRUSHED STAINLESS ANODIZED FINISHES AVAILABLE

NOTE: FOR A DETAILED LISTING OF THE COMPONENTS OF EACH KIT GO TO [crlaurence.com/sliding-glass-doors](http://crlaurence.com/sliding-glass-doors)



② SLIDER SECTION  
1 1/2"=1'-0"

STANDARD ABBREVIATIONS	
RO	ROUGH OPENING
FD	FRAME DIMENSION
DLO	DAYLIGHT OPENING
DO	DOOR OPENING
DD	DOOR DIMENSION
GD	GLASS DIMENSION
DP	DIMENSION POINT

Revisions By:

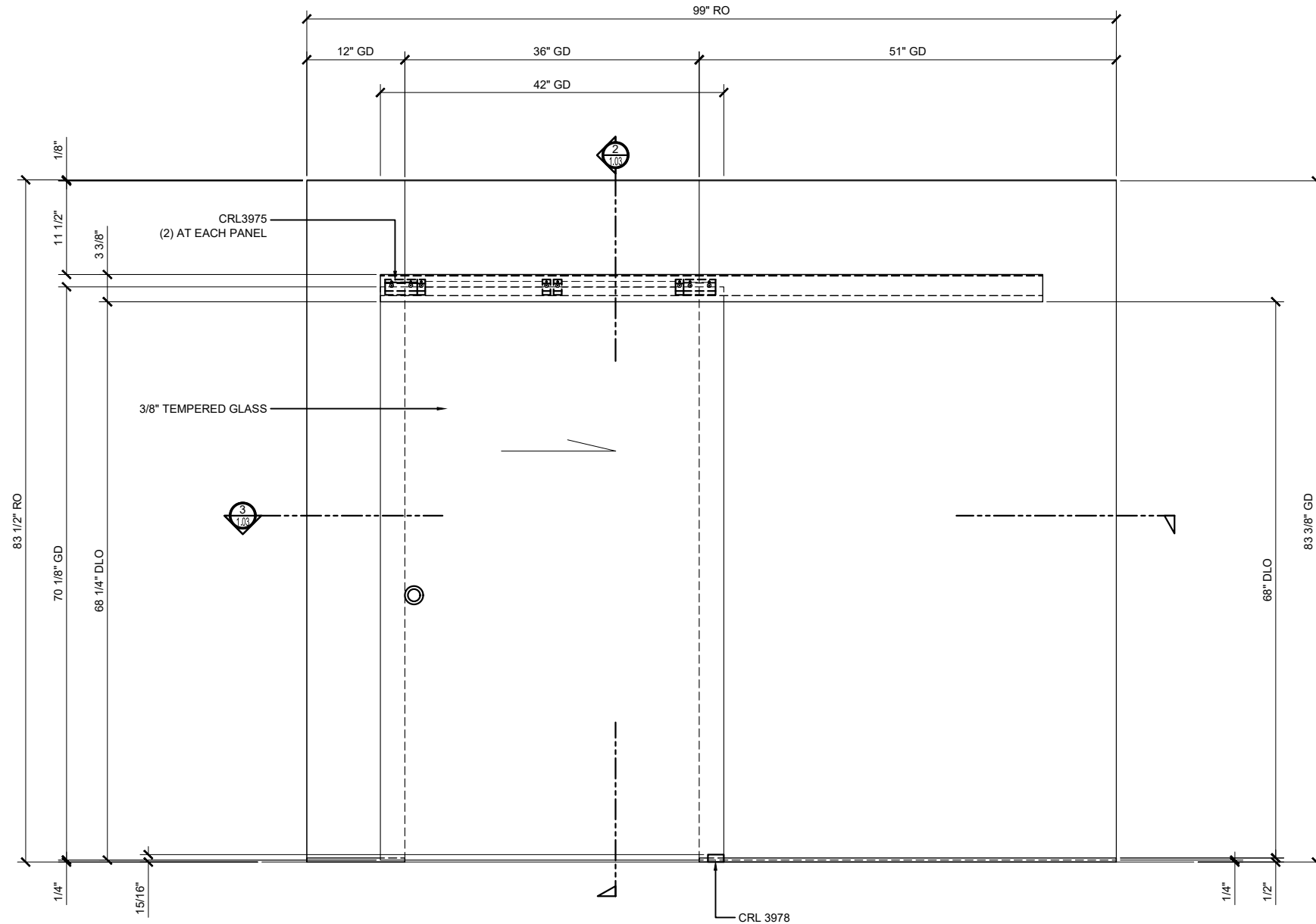


A CRH COMPANY  
2503 E. Vernon Avenue, Los Angeles, CA 90058-1887  
PH (800)-421-6144 FX: 800-587-7501 [www.crlaurence.com](http://www.crlaurence.com)

Description:  
CRL280/285 SERIES  
TOP HUNG SINGLE TRACK  
CEILING MOUNT SLIDING DOOR  
FOR 3/8" AND 1/2" GLASS

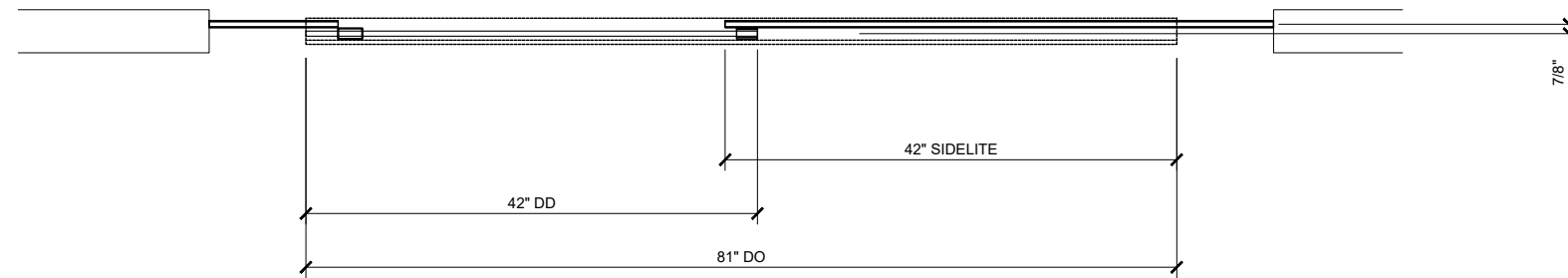
Drawn By: GM  
Date: 04/24/19  
Scale: AS NOTED  
File Name:  
CRL280\_Top\_Hung\_Slid\_Doors.dwg  
Sheet

# CRL 280/285 SERIES TOP HUNG SLIDING DOOR CRL2812G AND CRL28512G SYSTEM



① CRL2812G AND CRL 28512G - ELEVATION

1 1/2"=1'-0"

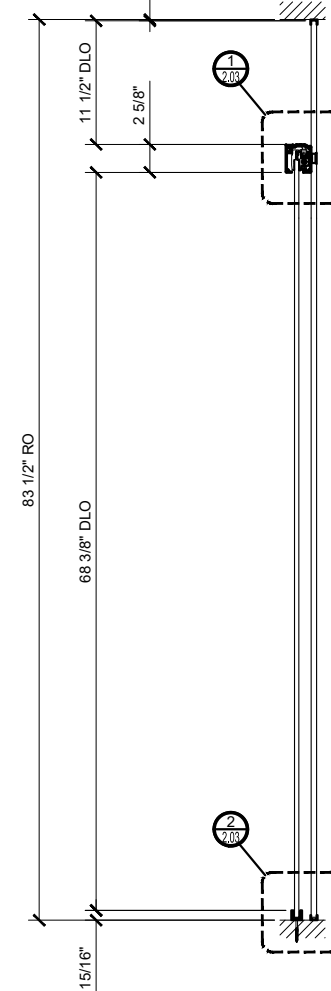


③ CRL2812G AND CRL 28512G - PLAN

1 1/2"=1'-0"

- \* FOR 3/8" TO 1/2" (10 TO 12 MM) TEMPERED GLASS
- \* MOUNT TO STRUCTURAL CEILING AND WALL
- \* AVAILABLE WITH OR WITHOUT "SOFTBRAKE" BRAKING SYSTEM
- \* RATED FOR DOORS WEIGHING UP TO 176 POUNDS (80 KG)
- \* NO NOTCHES OR HOLES REQUIRED IN THE GLASS FOR INSTALLATION
- \* SATIN ANODIZED AND BRUSHED STAINLESS ANODIZED FINISHES AVAILABLE

NOTE: FOR A DETAILED LISTING OF THE COMPONENTS OF EACH KIT GO TO [crlaurence.com/sliding-glass-doors](http://crlaurence.com/sliding-glass-doors)



② SLIDER SECTION

1 1/2"=1'-0"

STANDARD ABBREVIATIONS	
RO	ROUGH OPENING
FD	FRAME DIMENSION
DLO	DAYLIGHT OPENING
DO	DOOR OPENING
DD	DOOR DIMENSION
GD	GLASS DIMENSION
DP	DIMENSION POINT

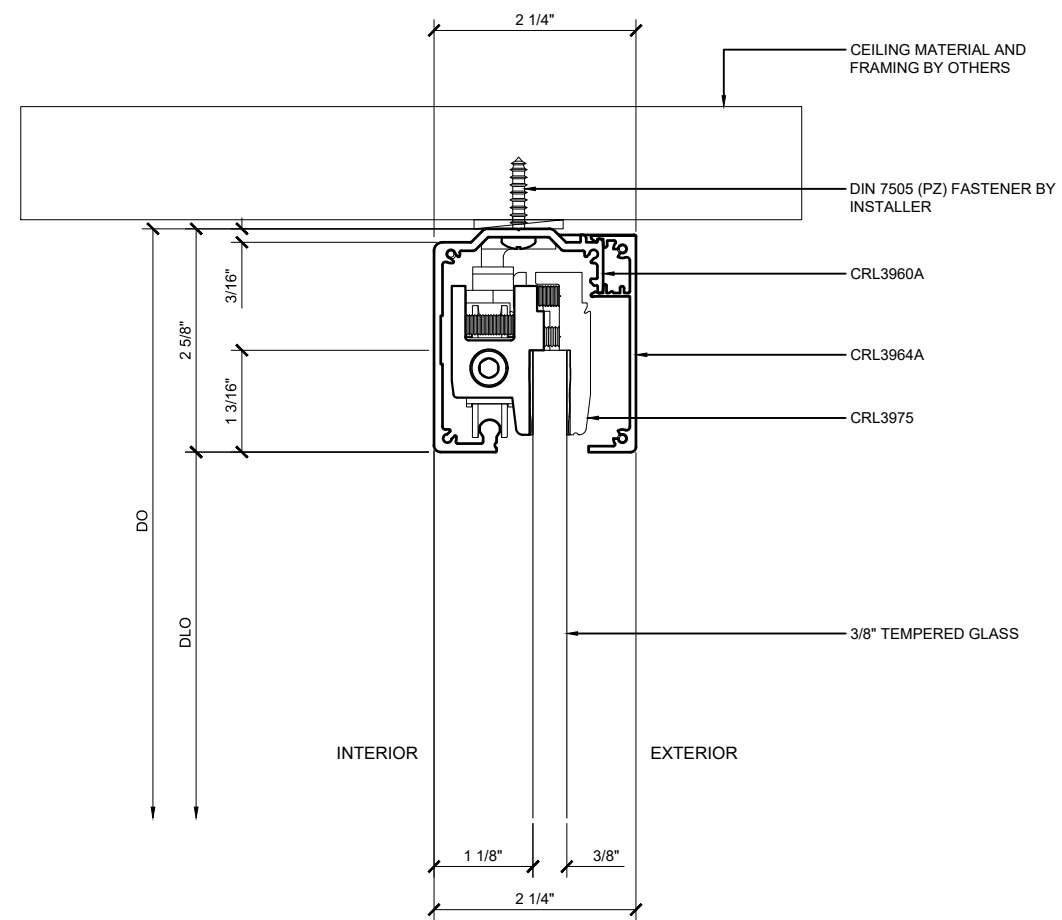
Revisions By:



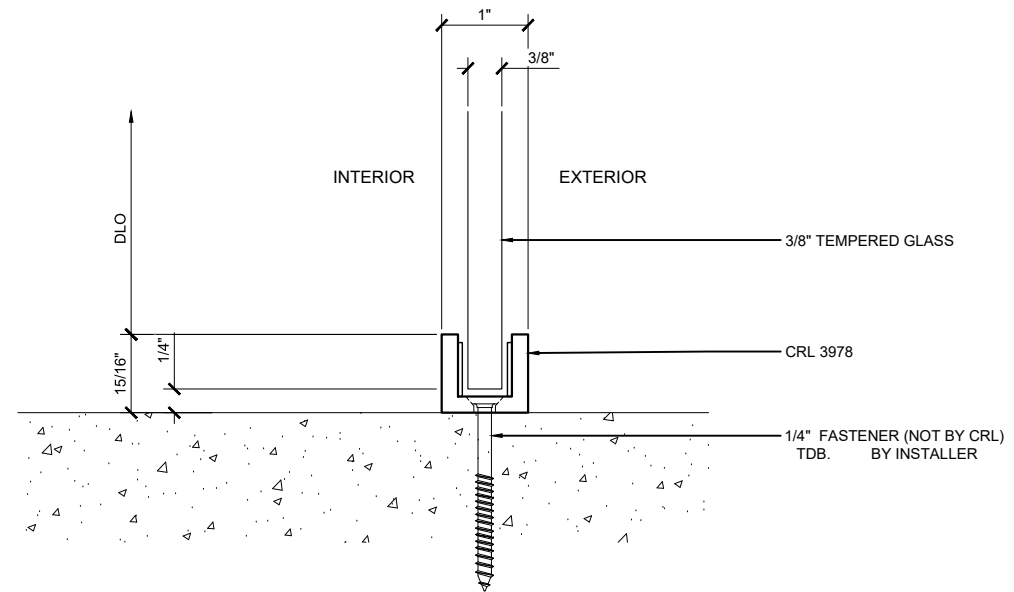
A CRH COMPANY  
2503 E. Vernon Avenue, Los Angeles, CA 90058-1897  
PH (800)-421-6144 FX: 800-587-7501 www.crlaurence.com

Description:  
CRL280/285 SERIES  
TOP HUNG SINGLE TRACK  
CEILING MOUNT SLIDING DOOR  
FOR 3/8" AND 1/2" GLASS

Drawn By: GM  
Date: 04/24/19  
Scale: AS NOTED  
File Name:  
CRL280\_Top\_Hung\_Slid\_Doors.dwg  
Sheet



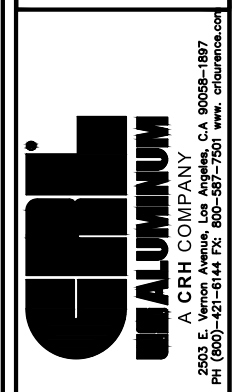
① CRL2812 & CRL28512 HEADER DETAIL  
 ARCH REF: NONE 1'-0"=1'-0"



② CRL2812 & CRL28512 SILL DETAIL  
 ARCH REF: NONE 1'-0"=1'-0"

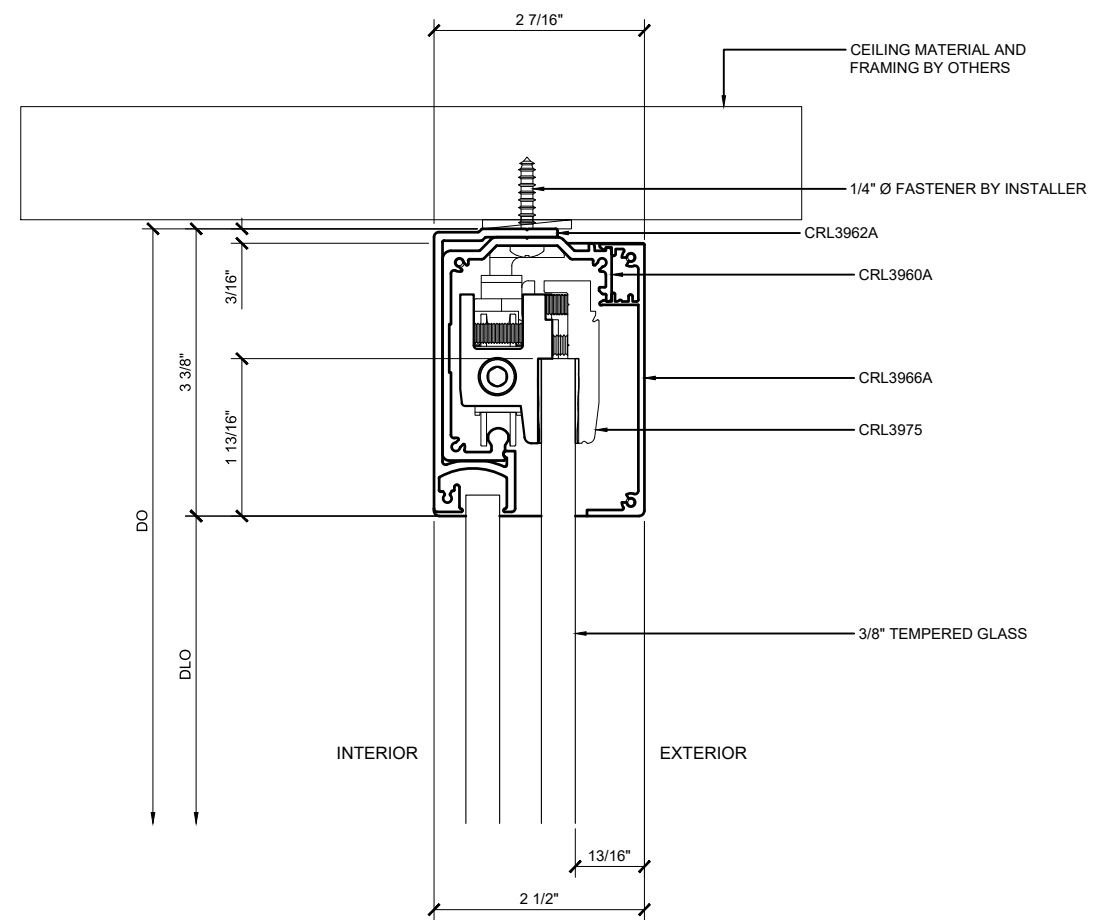
**CRL280/285 SERIES CEILING MOUNT SLIDING DOOR CRL2812 AND CRL28512 DETAILS**

Revisions By:

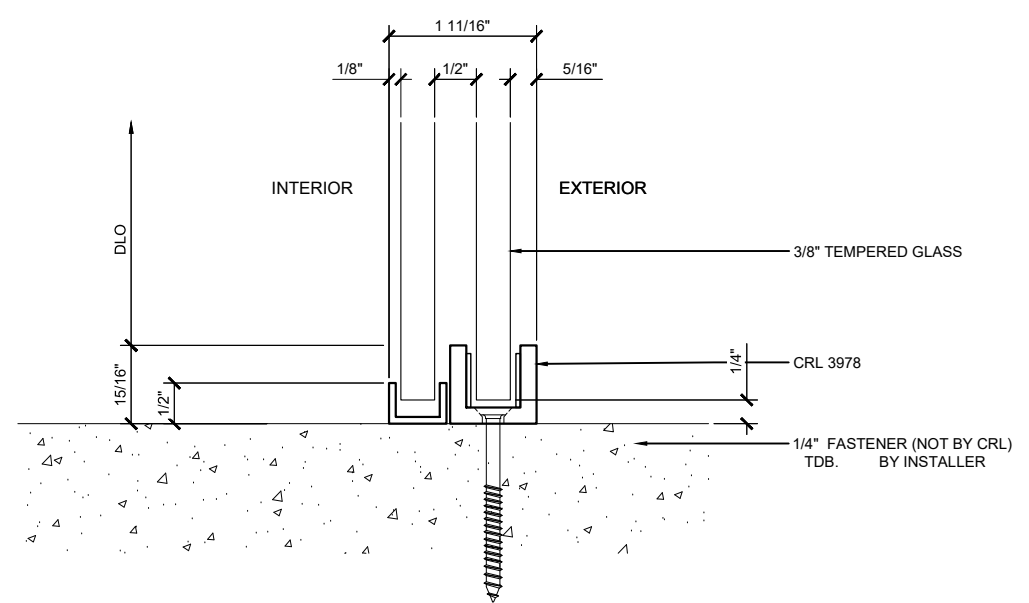


Description:  
 CRL280/285 SERIES  
 TOP HUNG SINGLE TRACK  
 CEILING MOUNT SLIDING DOOR  
 FOR 3/8" AND 1/2" GLASS

Drawn By: GM  
 Date: 04/24/19  
 Scale: AS NOTED  
 File Name:  
 CRL280\_Top\_Hung\_Slid\_Doors.dwg  
 Sheet



**① CRL2812F & CRL28512F HEADER DETAIL**  
 ARCH REF: NONE 1'-0"=1'-0"



**② CRL2812 & CRL28512 SILL DETAIL**  
 ARCH REF: NONE 1'-0"=1'-0"

**CRL280/285 SERIES CEILING MOUNT SLIDING DOOR CRL2812F AND CRL28512F DETAILS**

Revisions By:

**CRL ALUMINUM**  
 A CRH COMPANY  
 2503 E. Vernon Avenue, Los Angeles, CA 90058-1887  
 PH (800)-421-6144 FX: 800-587-7501 www.crlaluminum.com

**Description:**  
 CRL280/285 SERIES  
 TOP HUNG SINGLE TRACK  
 CEILING MOUNT SLIDING DOOR  
 FOR 3/8" AND 1/2" GLASS

Drawn By: GM
Date: 04/24/19
Scale: AS NOTED
File Name: CRL280_Top_Hung_Slid_Doors.dwg
Sheet