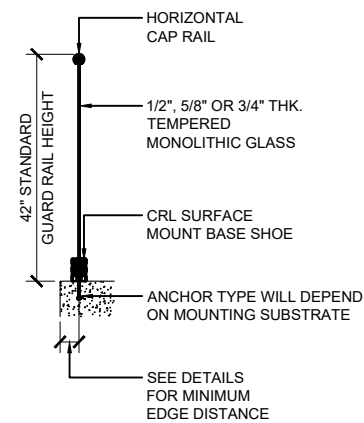
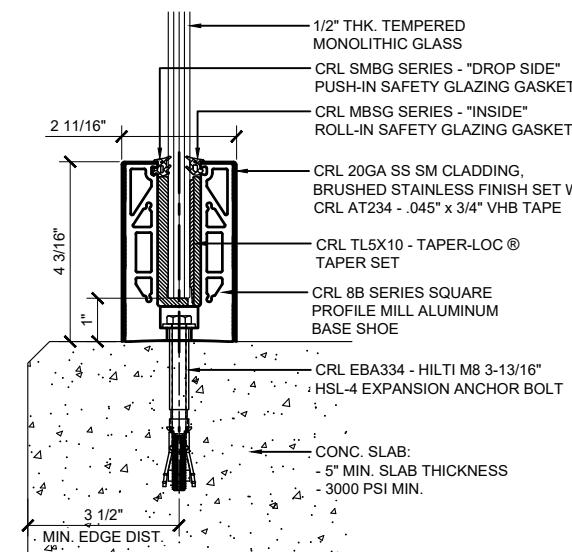


TYPICAL GRS GLASS RAILING ELEVATION VIEW - SURFACE MOUNT



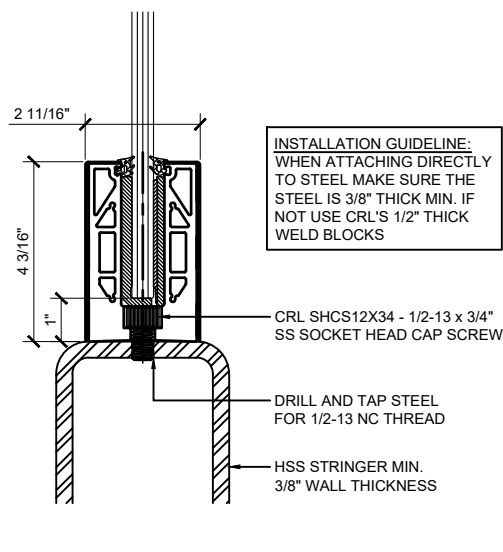
TYPICAL GRS GLASS RAILING ELEVATION VIEW - FASCIA MOUNT

TYPICAL BASE SHOE ATTACHMENTS USING THE 8B SERIES BASE SHOE WITH TAPER-LOC® SYSTEM



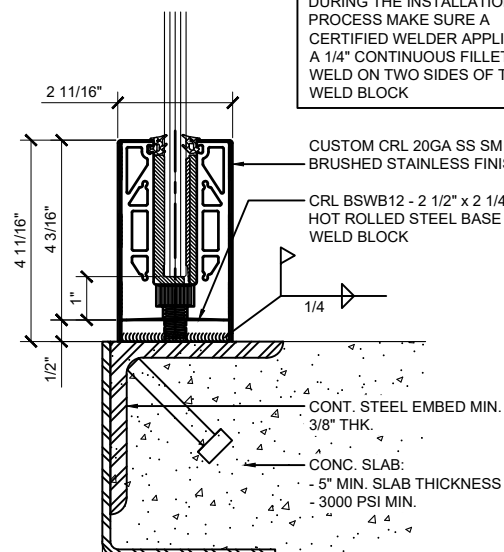
SURFACE MOUNT DETAIL  
CONCRETE SUBSTRATE

ANCHOR SPACING WILL DEPEND ON MOUNTING SUBSTRATE AND REGION OF PROJECT



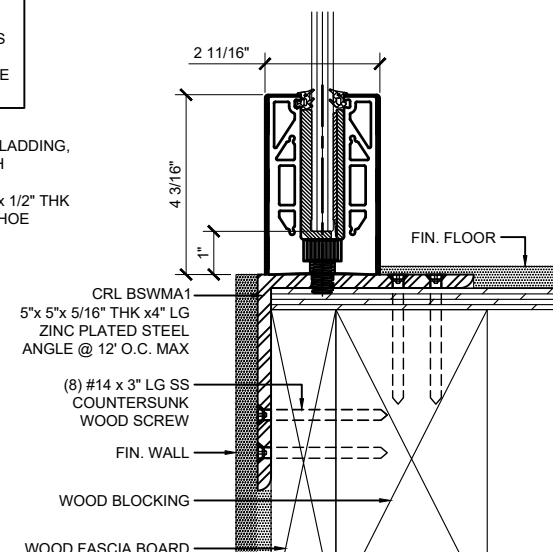
SURFACE MOUNT DETAIL  
STEEL SUBSTRATE

12" ON CENTER ANCHOR SPACING



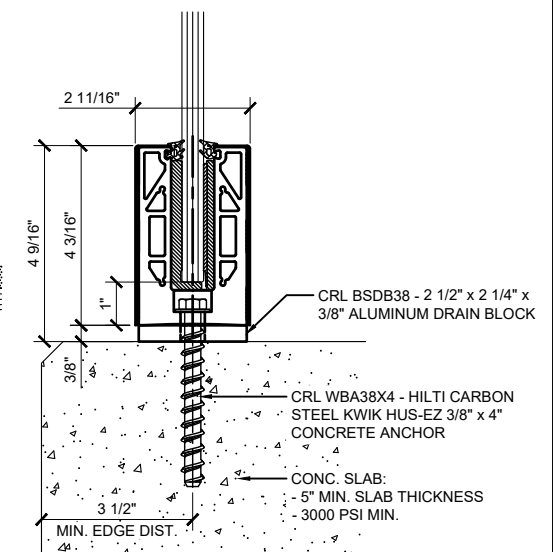
SURFACE MOUNT DETAIL  
STEEL SUBSTRATE W/ WELD BLOCK

12" ON CENTER ANCHOR SPACING



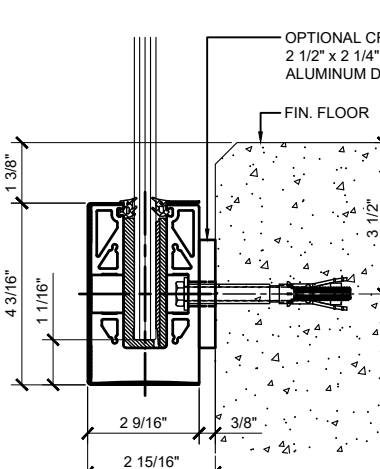
SURFACE MOUNT DETAIL  
WOOD SUBSTRATE

12" ON CENTER ANCHOR SPACING



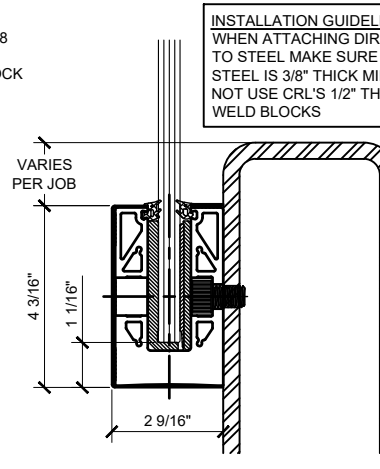
SURFACE MOUNT DETAIL  
CONCRETE SUBSTRATE W/ DRAIN BLOCK

ANCHOR SPACING WILL DEPEND ON MOUNTING SUBSTRATE AND REGION OF PROJECT



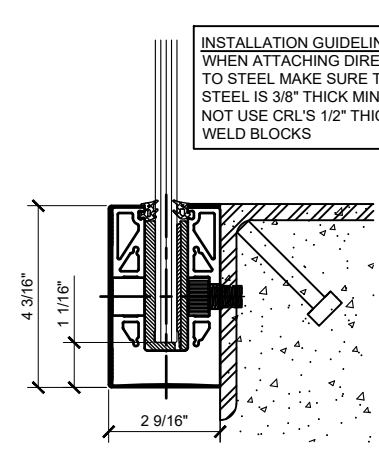
FASCIA MOUNT DETAIL  
CONCRETE SUBSTRATE

ANCHOR SPACING WILL DEPEND ON MOUNTING SUBSTRATE AND REGION OF PROJECT



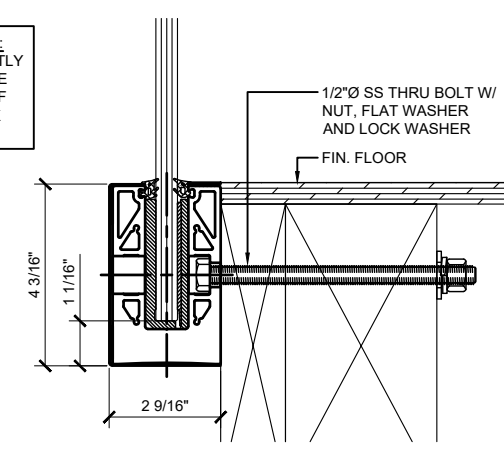
FASCIA MOUNT DETAIL  
STEEL SUBSTRATE

12" ON CENTER ANCHOR SPACING



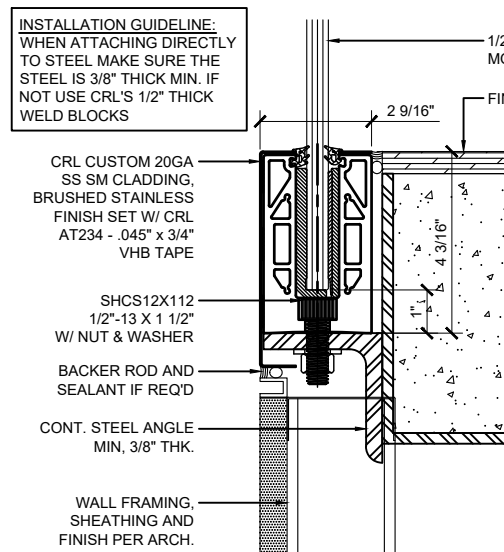
FASCIA MOUNT DETAIL  
STEEL SUBSTRATE

12" ON CENTER ANCHOR SPACING



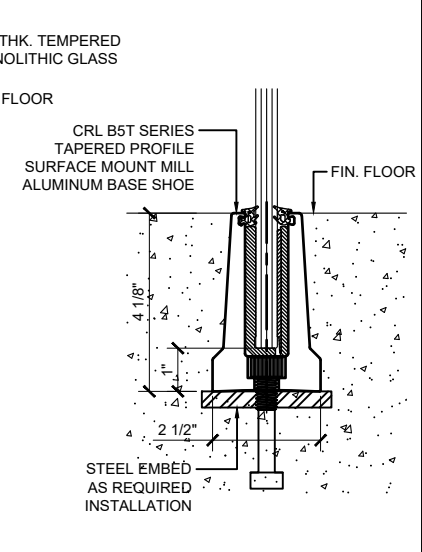
FASCIA MOUNT DETAIL  
WOOD SUBSTRATE

ANCHOR SPACING WILL DEPEND ON MOUNTING SUBSTRATE AND REGION OF PROJECT



SURFACE MOUNT DETAIL  
STEEL SUBSTRATE W/ CUSTOM CLADDING

12" ON CENTER ANCHOR SPACING



EMBED MOUNT  
CONCRETE SUBSTRATE

ANCHOR SPACING WILL DEPEND ON MOUNTING SUBSTRATE AND REGION OF PROJECT

INSTALLATION GUIDELINE:  
DURING THE INSTALLATION  
PROCESS MAKE SURE A  
CERTIFIED WELDER APPLIES  
A 1/4" CONTINUOUS FILLET  
WELD ON TWO SIDES OF THE  
WELD BLOCK

INSTALLATION GUIDELINE:  
WHEN ATTACHING DIRECTLY  
TO STEEL MAKE SURE THE  
STEEL IS 3/8" THICK MIN. IF  
NOT USE CRL'S 1/2" THICK  
WELD BLOCKS

INSTALLATION GUIDELINE:  
WHEN ATTACHING DIRECTLY  
TO STEEL MAKE SURE THE  
STEEL IS 3/8" THICK MIN. IF  
NOT USE CRL'S 1/2" THICK  
WELD BLOCKS

INSTALLATION GUIDELINE:  
WHEN ATTACHING DIRECTLY  
TO STEEL MAKE SURE THE  
STEEL IS 3/8" THICK MIN. IF  
NOT USE CRL'S 1/2" THICK  
WELD BLOCKS

INSTALLATION GUIDELINE:  
WHEN ATTACHING DIRECTLY  
TO STEEL MAKE SURE THE  
STEEL IS 3/8" THICK MIN. IF  
NOT USE CRL'S 1/2" THICK  
WELD BLOCKS

Revisions By:		
△	-	-
△	06/28/21	AB
△	06/05/18	VM
△	08/12/16	JG
△	02/08/16	JG

**CRL**

2625 E. Vermont Avenue, Los Angeles, CA 90065-1887  
PH: (800) 421-6144 FX: (800) 597-7301 www.crlra.com

ESR-3269

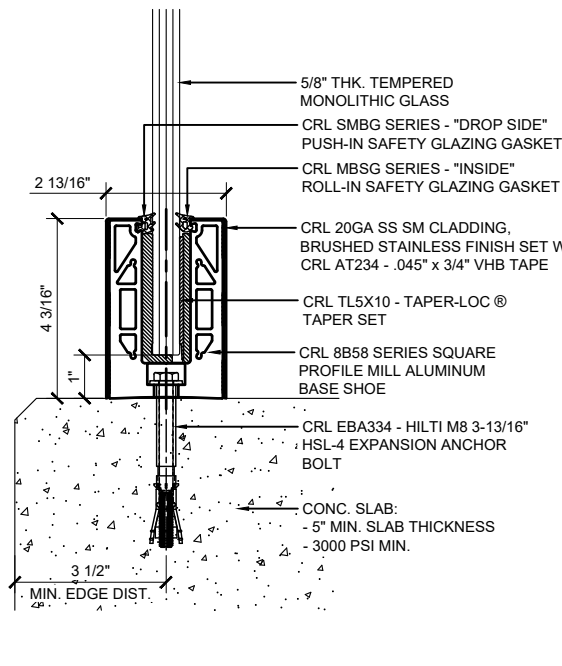
GRS  
GLASS RAILING SYSTEM  
FOR TEMPERED MONOLITHIC  
1/2", 5/8" & 3/4" THK. GLASS

ELEVATIONS AND  
DETAILS  
SURFACE MOUNT AND  
FASCIA MOUNT  
OPTIONS

Drawn By: JG  
Date: 12/15/2015  
Scale: AS NOTED  
File Name:  
CRL GRS Monolithic Glass Railing System.dwg

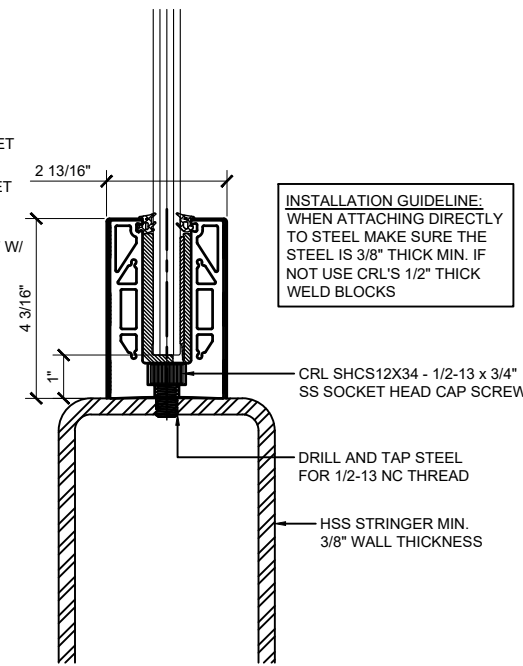
Sheet

TYPICAL BASE SHOE ATTACHMENTS USING THE 8B58 SERIES BASE SHOE WITH TAPER-LOC® SYSTEM



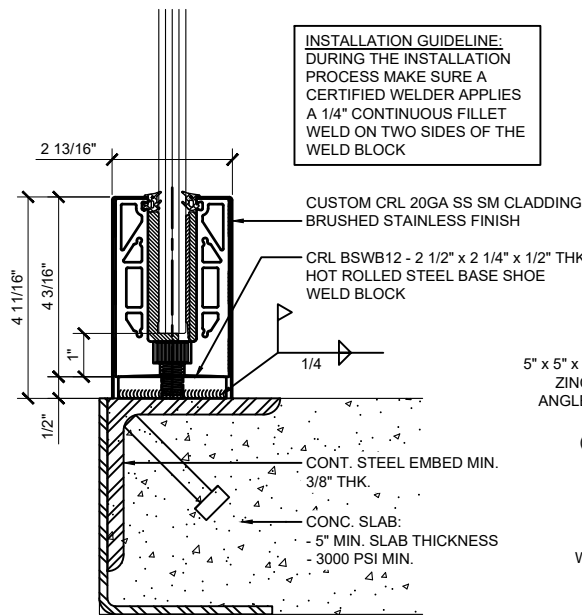
**SURFACE MOUNT DETAIL  
CONCRETE SUBSTRATE**

ANCHOR SPACING WILL DEPEND ON MOUNTING  
SUBSTRATE AND REGION OF PROJECT



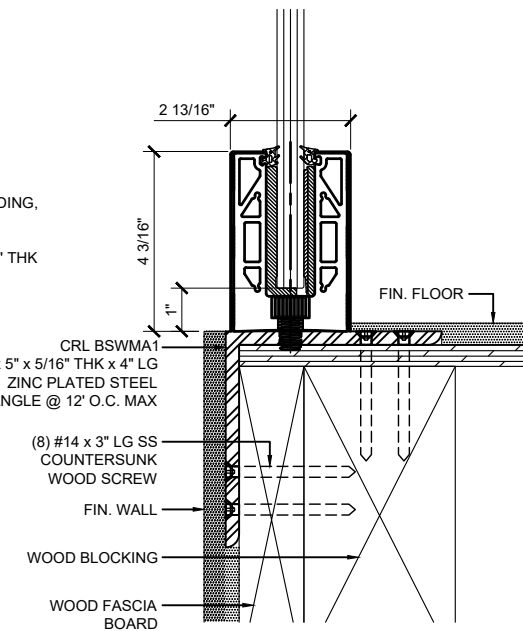
**SURFACE MOUNT DETAIL  
STEEL SUBSTRATE**

12" ON CENTER ANCHOR SPACING



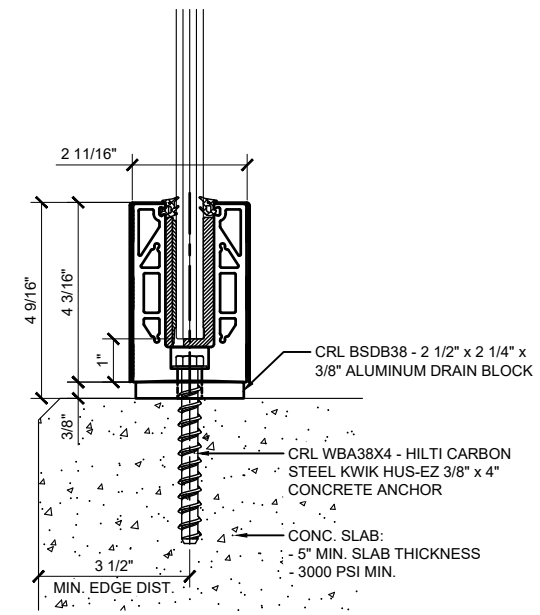
**SURFACE MOUNT DETAIL  
STEEL SUBSTRATE W/ WELD BLOCK**

12" ON CENTER ANCHOR SPACING



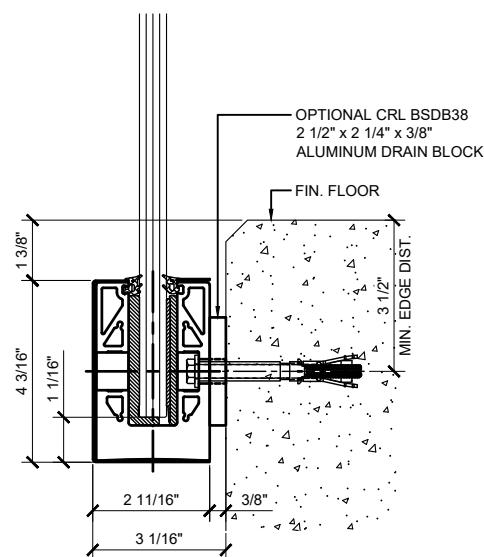
**SURFACE MOUNT DETAIL  
WOOD SUBSTRATE**

12" ON CENTER ANCHOR SPACING



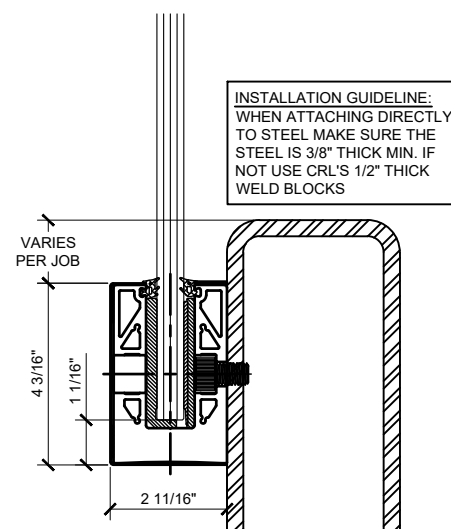
**SURFACE MOUNT DETAIL  
CONCRETE SUBSTRATE W/ DRAIN BLOCK**

ANCHOR SPACING WILL DEPEND ON MOUNTING  
SUBSTRATE AND REGION OF PROJECT



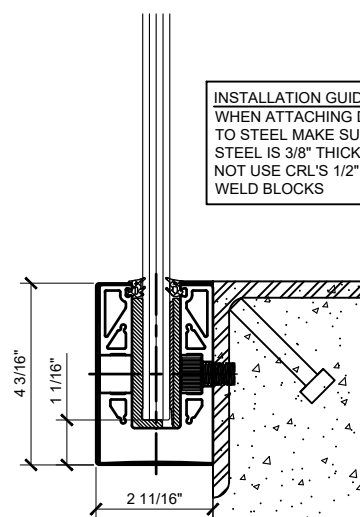
**FASCIA MOUNT DETAIL  
CONCRETE SUBSTRATE**

ANCHOR SPACING WILL DEPEND ON MOUNTING  
SUBSTRATE AND REGION OF PROJECT



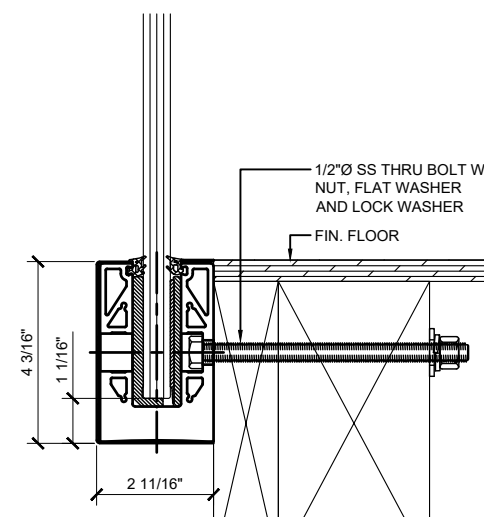
**FASCIA MOUNT DETAIL  
STEEL SUBSTRATE**

12" ON CENTER ANCHOR SPACING



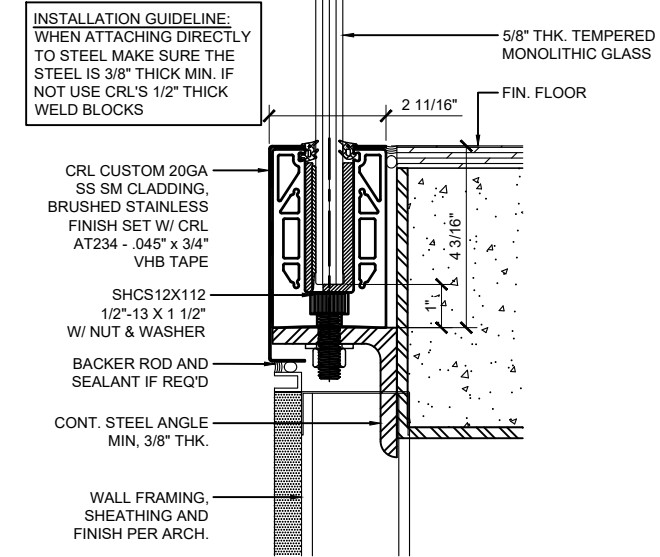
**FASCIA MOUNT DETAIL  
STEEL SUBSTRATE**

12" ON CENTER ANCHOR SPACING



**FASCIA MOUNT DETAIL  
WOOD SUBSTRATE**

ANCHOR SPACING WILL DEPEND ON MOUNTING  
SUBSTRATE AND REGION OF PROJECT



**SURFACE MOUNT DETAIL  
STEEL SUBSTRATE W/ CUSTOM CLADDING**

12" ON CENTER ANCHOR SPACING

**INSTALLATION GUIDELINE:**  
DURING THE INSTALLATION  
PROCESS MAKE SURE A  
CERTIFIED WELDER APPLIES  
A 1/4" CONTINUOUS FILLET  
WELD ON TWO SIDES OF THE  
WELD BLOCK

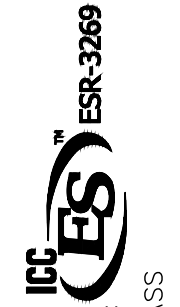
**INSTALLATION GUIDELINE:**  
WHEN ATTACHING DIRECTLY  
TO STEEL MAKE SURE THE  
STEEL IS 3/8" THICK MIN. IF  
NOT USE CRL'S 1/2" THICK  
WELD BLOCKS

**INSTALLATION GUIDELINE:**  
WHEN ATTACHING DIRECTLY  
TO STEEL MAKE SURE THE  
STEEL IS 3/8" THICK MIN. IF  
NOT USE CRL'S 1/2" THICK  
WELD BLOCKS

**INSTALLATION GUIDELINE:**  
WHEN ATTACHING DIRECTLY  
TO STEEL MAKE SURE THE  
STEEL IS 3/8" THICK MIN. IF  
NOT USE CRL'S 1/2" THICK  
WELD BLOCKS

**INSTALLATION GUIDELINE:**  
WHEN ATTACHING DIRECTLY  
TO STEEL MAKE SURE THE  
STEEL IS 3/8" THICK MIN. IF  
NOT USE CRL'S 1/2" THICK  
WELD BLOCKS

Revisions By:		
△	-	-
△	06/28/21	AB
△	06/05/18	VM
△	08/12/16	JG
△	02/08/16	JG

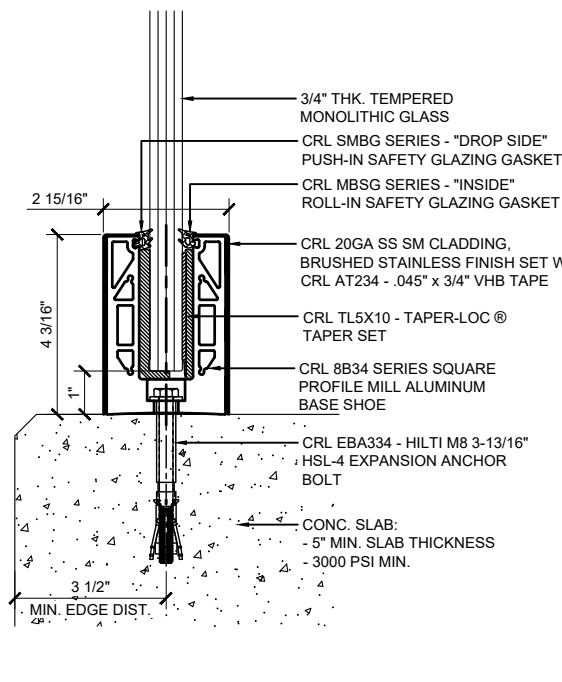


Description:  
GRS  
GLASS RAILING SYSTEM  
FOR TEMPERED MONOLITHIC  
GLASS  
1/2", 5/8" & 3/4" THK.

ELEVATIONS AND  
DETAILS  
SURFACE MOUNT AND  
FASCIA MOUNT  
OPTIONS

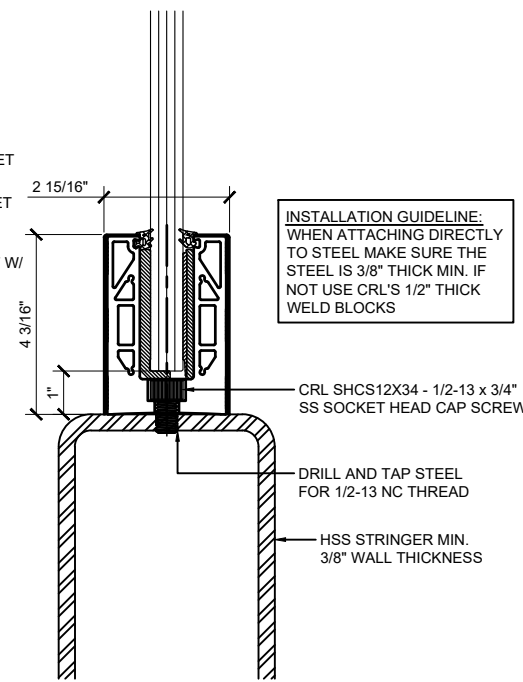
Drawn By: JG  
Date: 12/15/2015  
Scale: AS NOTED  
File Name:  
CRL GRS Monolithic Glass Railing System.dwg

TYPICAL BASE SHOE ATTACHMENTS USING THE 8B34 SERIES BASE SHOE WITH TAPER-LOC® SYSTEM



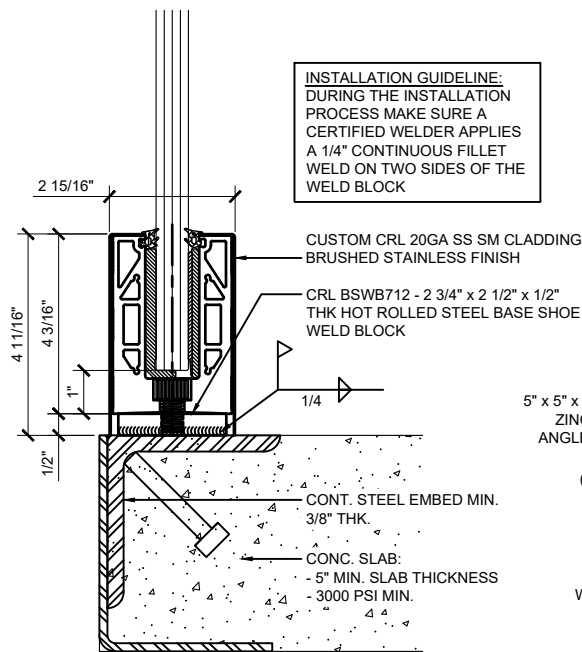
**SURFACE MOUNT DETAIL  
CONCRETE SUBSTRATE**

ANCHOR SPACING WILL DEPEND ON MOUNTING  
SUBSTRATE AND REGION OF PROJECT



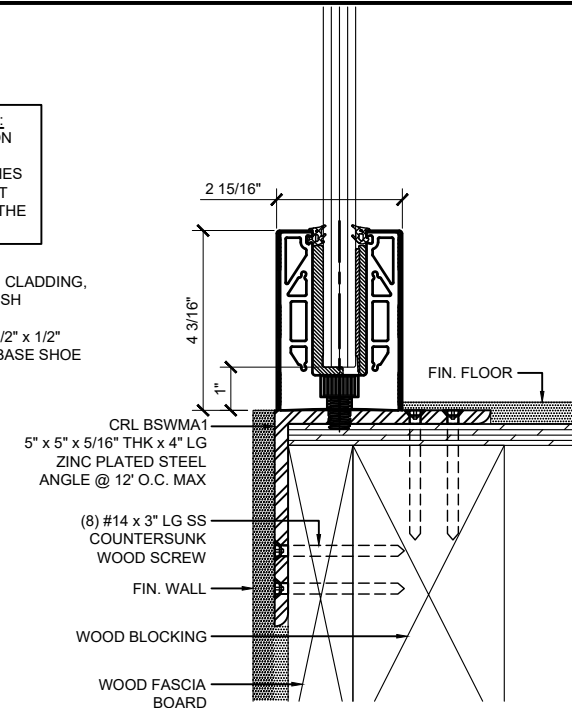
**SURFACE MOUNT DETAIL  
STEEL SUBSTRATE**

12\"/>



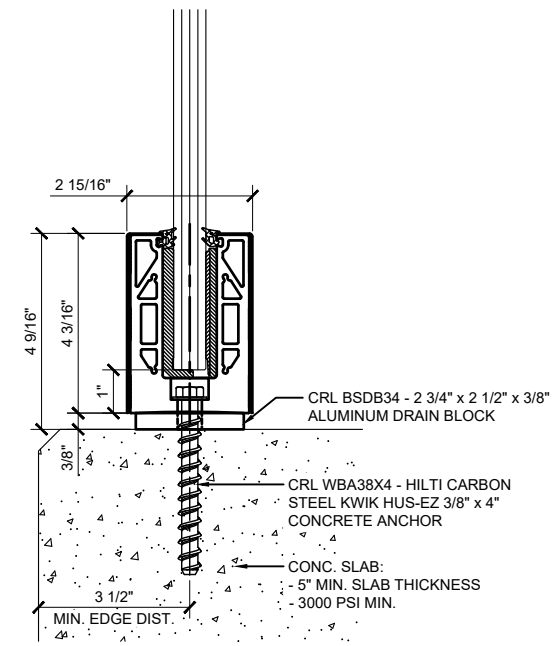
**SURFACE MOUNT DETAIL  
STEEL SUBSTRATE W/ WELD BLOCK**

12\"/>



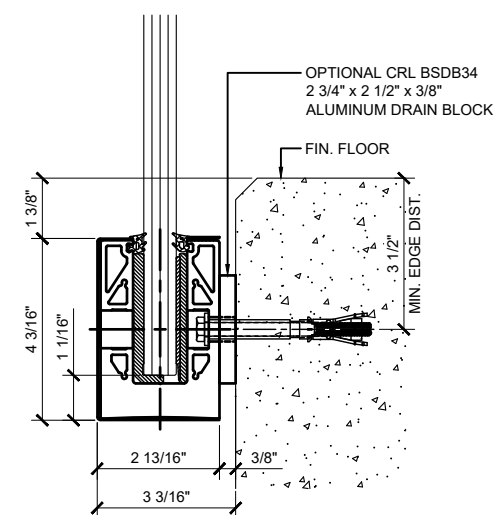
**SURFACE MOUNT DETAIL  
WOOD SUBSTRATE**

12\"/>



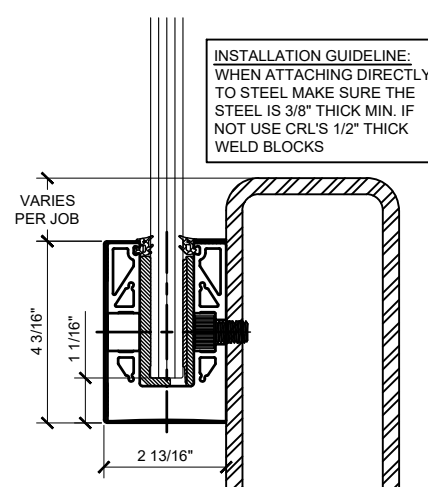
**SURFACE MOUNT DETAIL  
CONCRETE SUBSTRATE W/ DRAIN BLOCK**

ANCHOR SPACING WILL DEPEND ON MOUNTING  
SUBSTRATE AND REGION OF PROJECT



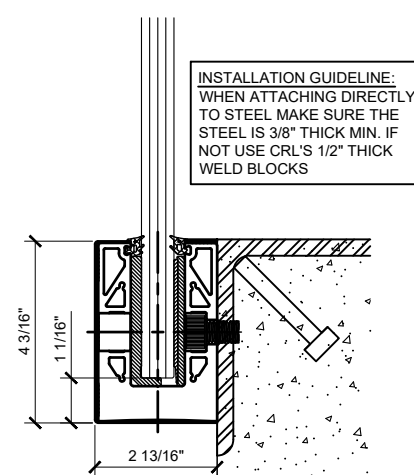
**FASCIA MOUNT DETAIL  
CONCRETE SUBSTRATE**

ANCHOR SPACING WILL DEPEND ON MOUNTING  
SUBSTRATE AND REGION OF PROJECT



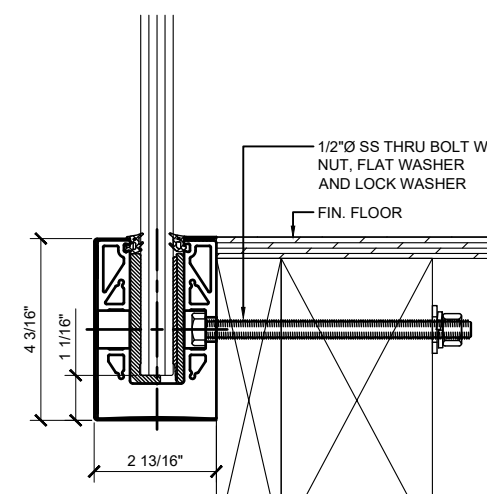
**FASCIA MOUNT DETAIL  
STEEL SUBSTRATE**

12\"/>



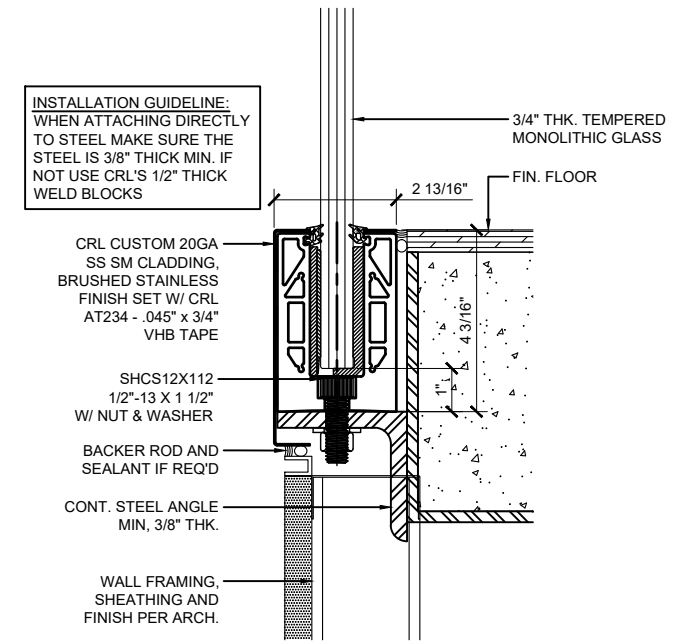
**FASCIA MOUNT DETAIL  
STEEL SUBSTRATE**

12\"/>



**FASCIA MOUNT DETAIL  
WOOD SUBSTRATE**

ANCHOR SPACING WILL DEPEND ON MOUNTING  
SUBSTRATE AND REGION OF PROJECT



**SURFACE MOUNT DETAIL  
STEEL SUBSTRATE W/ CUSTOM CLADDING**

12\"/>

**INSTALLATION GUIDELINE:**  
DURING THE INSTALLATION  
PROCESS MAKE SURE A  
CERTIFIED WELDER APPLIES  
A 1/4\"/>

**INSTALLATION GUIDELINE:**  
WHEN ATTACHING DIRECTLY  
TO STEEL MAKE SURE THE  
STEEL IS 3/8\"/>

**INSTALLATION GUIDELINE:**  
WHEN ATTACHING DIRECTLY  
TO STEEL MAKE SURE THE  
STEEL IS 3/8\"/>

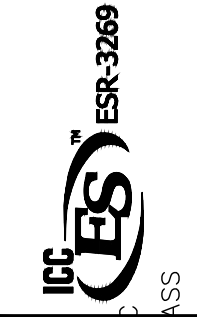
**INSTALLATION GUIDELINE:**  
WHEN ATTACHING DIRECTLY  
TO STEEL MAKE SURE THE  
STEEL IS 3/8\"/>

**INSTALLATION GUIDELINE:**  
WHEN ATTACHING DIRECTLY  
TO STEEL MAKE SURE THE  
STEEL IS 3/8\"/>

Revisions By:		
△	-	-
△	06/28/21	AB
△	06/05/18	VM
△	08/12/16	JG
△	02/08/16	JG



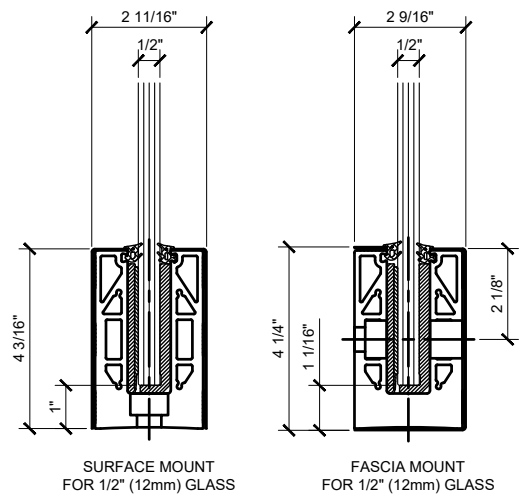
2625 E. Vermont Avenue, Los Angeles, CA 90065-1897  
PH: (800) 421-6144 FX: (800) 597-7501 www.crlinc.com



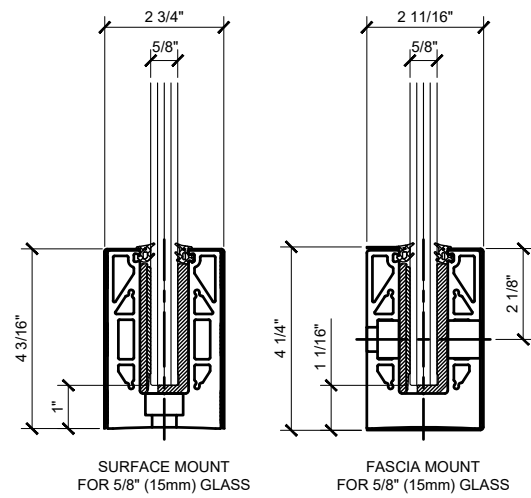
Description:  
GRS  
GLASS RAILING SYSTEM  
FOR TEMPERED MONOLITHIC  
1/2", 5/8" & 3/4" THK. GLASS

ELEVATIONS AND  
DETAILS  
SURFACE MOUNT AND  
FASCIA MOUNT  
OPTIONS

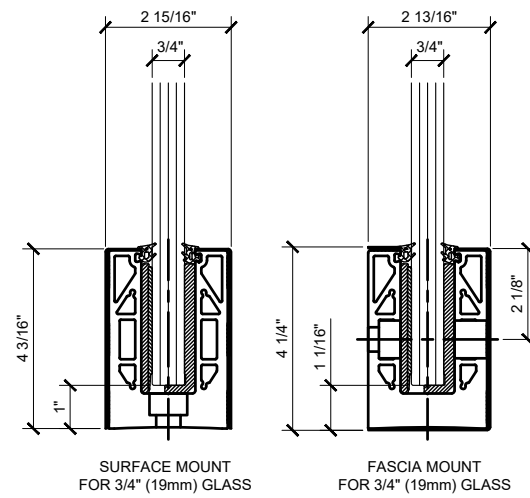
Drawn By: JG  
Date: 12/15/2015  
Scale: AS NOTED  
File Name:  
CRL GRS Monolithic Glass Railing System.dwg



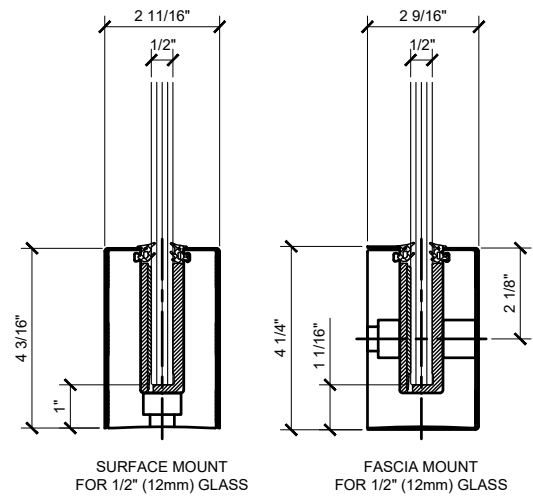
**8B SERIES BASE SHOE**



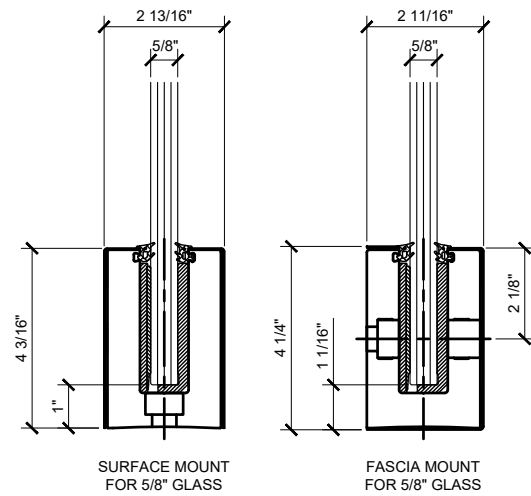
**8B58 SERIES BASE SHOE**



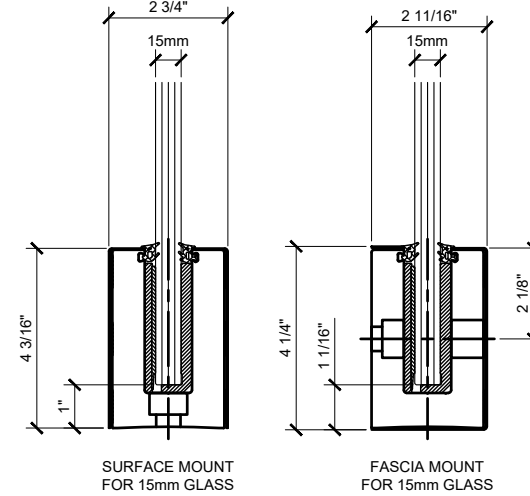
**8B34 SERIES BASE SHOE**



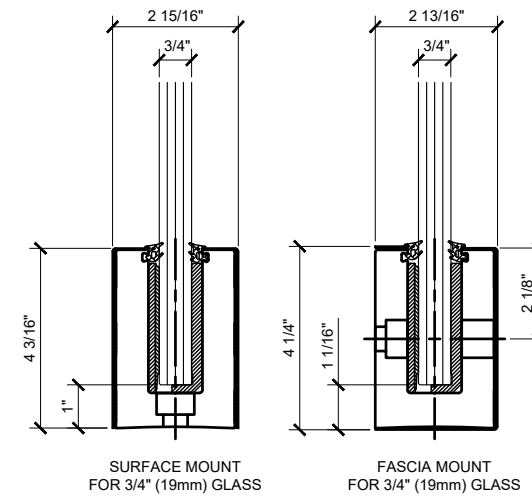
**B5S SERIES BASE SHOE**



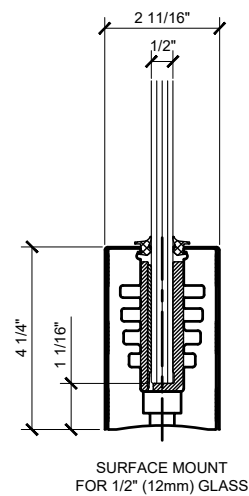
**B6N SERIES BASE SHOE**



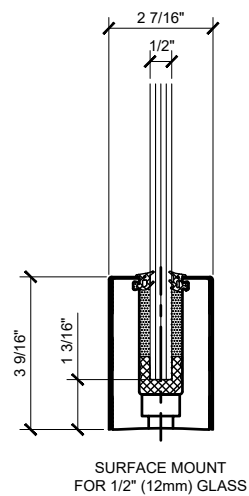
**B6S SERIES BASE SHOE**



**B7S SERIES BASE SHOE**

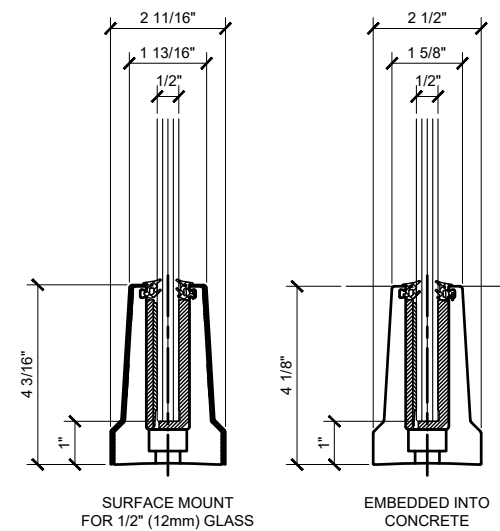


**B5A SERIES BASE SHOE**



**B5L SERIES BASE SHOE**

\*NOTE: B5L BASE SHOE CANNOT BE USED W/ TAPER-LOC ®.



**B5T SERIES BASE SHOE**

Revisions By:		
△	-	-
△	06/28/21	AB
△	06/05/18	VM
△	08/12/16	JG
△	02/08/16	JG

**CRL**

2623 E. Vermont Avenue, Los Angeles, CA 90065-1897  
PH: (800)-421-6144 FX: 800-597-7501 www.crlraile.com

ICG **ES**™ ESR-3269

Description: GRS GLASS RAILING SYSTEM FOR TEMPERED MONOLITHIC 1/2", 5/8" & 3/4" THK. GLASS

BASE SHOE OPTIONS SURFACE & FASCIA MOUNT

Drawn By: JG  
Date: 12/15/2015  
Scale: AS NOTED  
File Name: CRL GRS Monolithic Glass Railing System.dwg  
Sheet

Revisions By:		
△	-	-
△	06/28/21	AB
△	06/05/18	VM
△	08/12/16	JG
△	02/08/16	JG

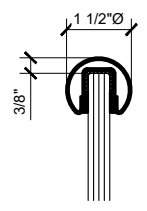
**CRL**  
 2603 E. Vermont Avenue, Los Angeles, CA 90065-1897  
 PH: (800) 421-6144 FX: (800) 597-7501 www.crlinc.com

**IGG ES™ ESR-3269**

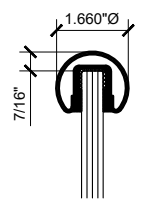
Description:  
 GRS  
 GLASS RAILING SYSTEM  
 FOR TEMPERED MONOLITHIC  
 1/2", 5/8" & 3/4" THK. GLASS

CAP RAIL OPTIONS

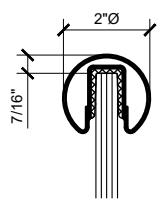
Drawn By: JG  
 Date: 12/15/2015  
 Scale: AS NOTED  
 File Name:  
 CRL GRS Monolithic Glass Railing System.dwg  
 Sheet



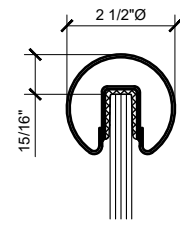
GR15 - 1 1/2" Ø  
 FOR 1/2" (12mm) GLASS  
 (WET SET W/ TUFF-PAK & SILICONE)



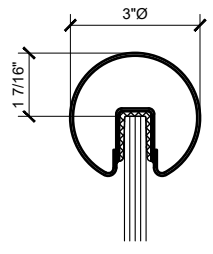
GR16 - 1.660" Ø  
 FOR 1/2" (12mm) TO 5/8" (15mm) GLASS  
 (WET SET W/ TUFF-PAK & SILICONE)



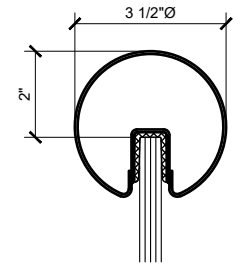
GR20 - 2" Ø  
 FOR 1/2" (12mm) TO 5/8" (15mm) GLASS



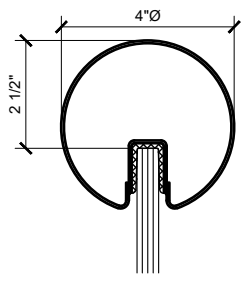
GR25 - 2 1/2" Ø  
 FOR 1/2" (12mm) TO 5/8" (15mm) GLASS



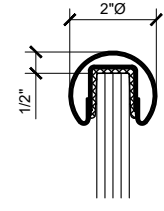
GR30 - 3" Ø  
 FOR 1/2" (12mm) TO 5/8" (15mm) GLASS



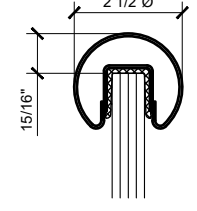
GR35 - 3 1/2" Ø  
 FOR 1/2" (12mm) TO 5/8" (15mm) GLASS



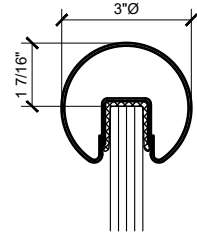
GR40 - 4" Ø  
 FOR 1/2" (12mm) TO 5/8" (15mm) GLASS



GR207 - 2" Ø  
 FOR 3/4" (19mm) GLASS

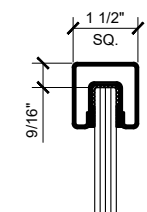


GR257 - 2 1/2" Ø  
 FOR 3/4" (19mm) GLASS

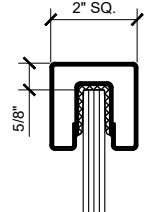


GR307 - 3" Ø  
 FOR 3/4" (19mm) GLASS

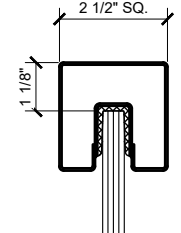
**BUMP-FORMED & WELDED PREMIUM RADIUS PROFILE CAP RAIL**



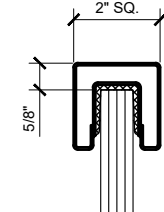
GRS15 - 1 1/2" SQ.  
 FOR 1/2" (12mm) GLASS  
 (WET SET W/ TUFF-PAK & SILICONE)



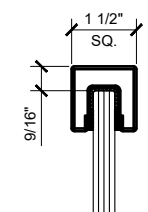
GRS20 - 2" SQ.  
 FOR 1/2" (12mm) TO 5/8" (15mm) GLASS



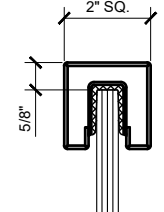
GRS25 - 2 1/2" SQ.  
 FOR 1/2" (12mm) TO 5/8" (15mm) GLASS



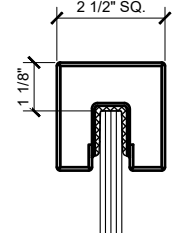
GRS207 - 2" SQ.  
 FOR 3/4" (19mm) GLASS



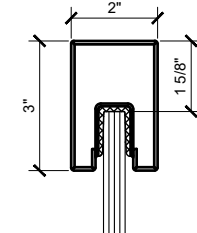
GRSC15 - 1 1/2" SQ.  
 FOR 1/2" (12mm) GLASS  
 (WET SET W/ TUFF-PAK & SILICONE)



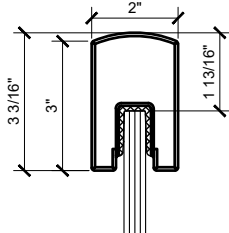
GRSC20 - 2" SQ.  
 FOR 1/2" (12mm) TO 5/8" (15mm) GLASS



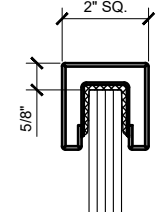
GRSC25 - 2 1/2" SQ.  
 FOR 1/2" (12mm) TO 5/8" (15mm) GLASS



GRSC3BS - 2" x 3"  
 FOR 1/2" (12mm) TO 5/8" (15mm) GLASS



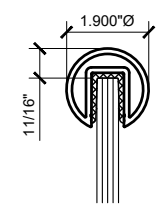
GRSCR3BS - 2" x 3"  
 FOR 1/2" (12mm) TO 5/8" (15mm) GLASS



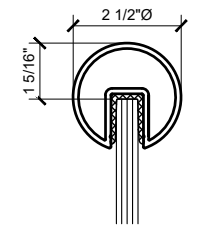
GRSC207 - 2" SQ.  
 FOR 3/4" (19mm) GLASS

**BUMP-FORMED & WELDED PREMIUM SQUARE PROFILE CAP RAIL**

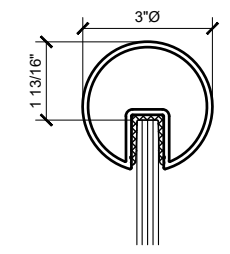
**SQUARE PROFILE CRISP CORNER CAP RAIL**



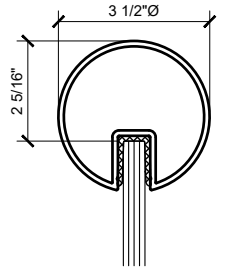
GR19 - 1.9" Ø  
 FOR 1/2" (12mm) TO 5/8" (15mm) GLASS



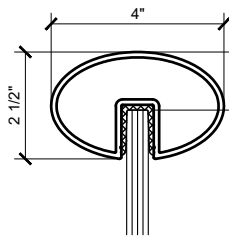
GR25 - 2 1/2" Ø  
 FOR 1/2" (12mm) TO 5/8" (15mm) GLASS



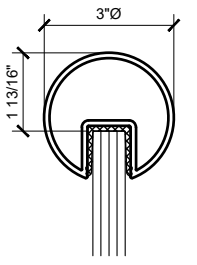
GR30 - 3" Ø  
 FOR 1/2" (12mm) TO 5/8" (15mm) GLASS



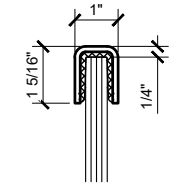
GR35 - 3 1/2" Ø  
 FOR 1/2" (12mm) TO 5/8" (15mm) GLASS



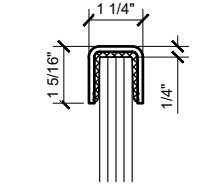
GR0V4 - 4" x 2 1/2" OVAL  
 FOR 1/2" (12mm) TO 5/8" (15mm) GLASS



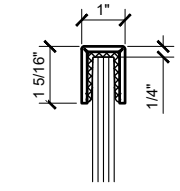
GR307 - 3" Ø  
 FOR 3/4" (19mm) GLASS



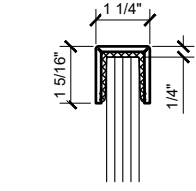
GRL10 - 1" x 1 5/16"  
 FOR 1/2" (12mm) TO 5/8" (15mm) GLASS



GRL107 - 1 1/4" x 1 5/16"  
 FOR 3/4" (19mm) GLASS



GR10 - 1" x 1 5/16"  
 FOR 1/2" (12mm) TO 5/8" (15mm) GLASS

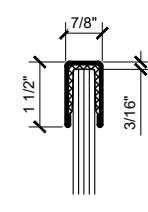


GR107 - 1 1/4" x 1 5/16"  
 FOR 3/4" (19mm) GLASS

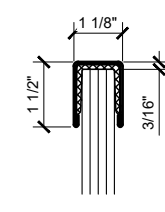
**EXTRUDED ALUMINUM CAP RAIL**

**LOW PROFILE 11 GAUGE CAP RAIL**

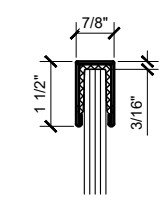
**LOW PROFILE 11 GAUGE CRISP CORNER CAP RAIL**



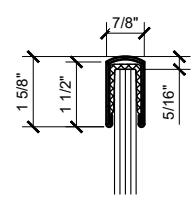
GRUC5 - 7/8" x 1 1/2"  
 FOR 1/2" (12mm) GLASS



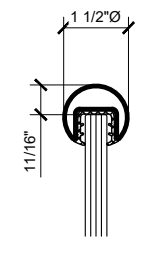
GRUC7 - 1 1/8" x 1 1/2"  
 FOR 3/4" (19mm) GLASS



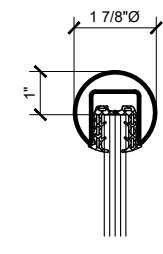
GRCF5 - 7/8" x 1 1/2"  
 FOR 1/2" (12mm) GLASS



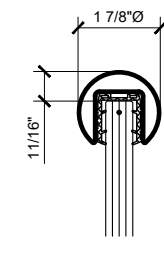
GRCR5 - 7/8" x 1 1/2"  
 FOR 1/2" (12mm) GLASS



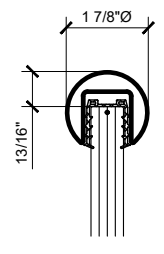
GRRF15 - 1 1/2" Ø  
 FOR 1/2" (12mm) TO 5/8" (15mm) GLASS



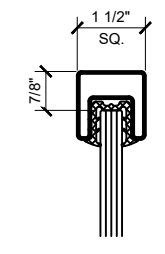
GRRF20 - 1 7/8" Ø  
 FOR 1/2" (12mm) GLASS



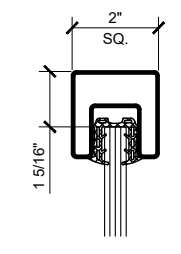
GRRF20 - 1 7/8" Ø  
 FOR 5/8" (15mm) GLASS



GRRF20 - 1 7/8" Ø  
 FOR 3/4" (19mm) GLASS



SRF15 - 1 1/2" SQ.  
 FOR 1/2" (12mm) GLASS

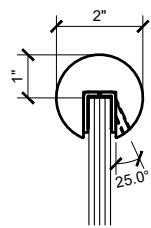


SRF20 - 2" SQ.  
 FOR 1/2" (12mm) GLASS

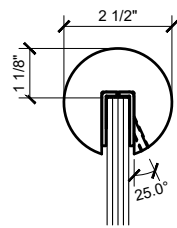
**U-CHANNEL 18 GAUGE CAP RAIL**

**U-CHANNEL 18 GAUGE CRISP CORNER CAP RAIL**

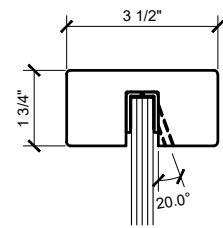
**ROLL-FORMED CAP RAIL**



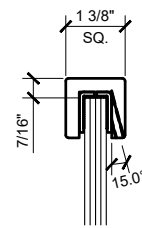
337 SERIES - 2"Ø  
FOR 1/2" (12mm)



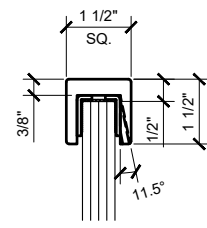
338 SERIES - 2 1/2"Ø  
FOR 1/2" (12mm)



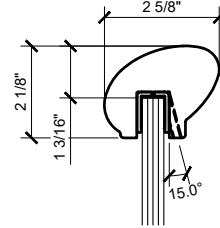
339 SERIES - 3 1/2" x 1 3/4"  
FOR 1/2" (12mm)



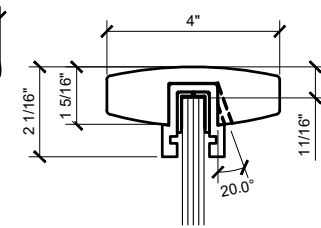
324 SERIES - 1 3/8" SQ.  
FOR 1/2" (12mm)



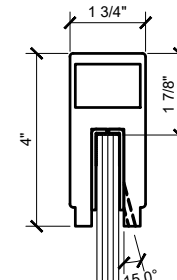
3243 SERIES - 1 1/2" SQ.  
FOR 3/4" (19mm)



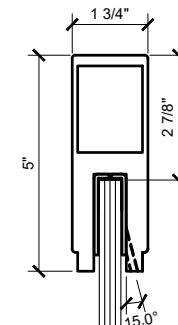
376 SERIES - ELLIPTICAL  
FOR 1/2" (12mm)



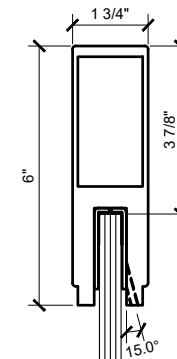
398 SERIES - 4" x 1 5/16"  
FOR 1/2" (12mm)



636 SERIES - 1 3/4" x 4"  
FOR 1/2" (12mm)



637 SERIES - 1 3/4" x 5"  
FOR 1/2" (12mm)



638 SERIES - 1 3/4" x 6"  
FOR 1/2" (12mm)

**BLUMCRAFT® EXTRUDED SOLID ALUMINUM CAP RAIL**

**BLUMCRAFT® EXTRUDED ALUMINUM CAP RAIL**

Revisions By:		
△	-	-
△	06/28/21	AB
△	06/05/18	VM
△	08/12/16	JG
△	02/08/16	JG

**CRL**

2603 E. Vernon Avenue, Los Angeles, CA 90058-1887  
PH: (800)-421-6144 FX: (800)-597-7501 www.crlaurence.com



Description:  
GRS  
GLASS RAILING SYSTEM  
FOR TEMPERED MONOLITHIC  
1/2", 5/8" & 3/4" THK. GLASS

CAP RAIL OPTIONS

Drawn By: JG  
Date: 12/15/2015  
Scale: AS NOTED  
File Name:  
CRL GRS Monolithic Glass Railing System.dwg  
Sheet