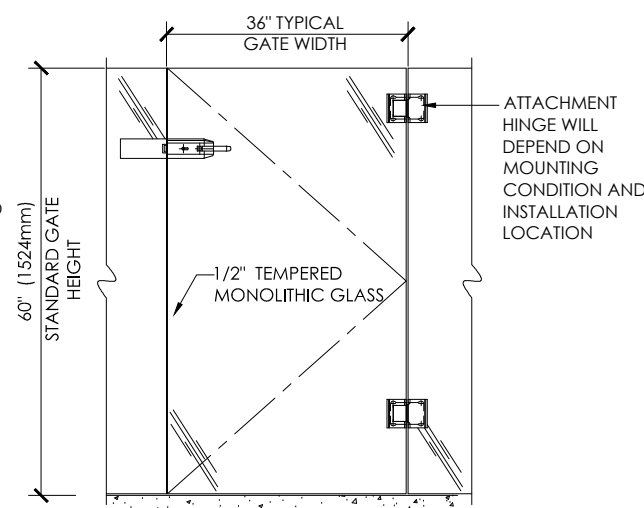
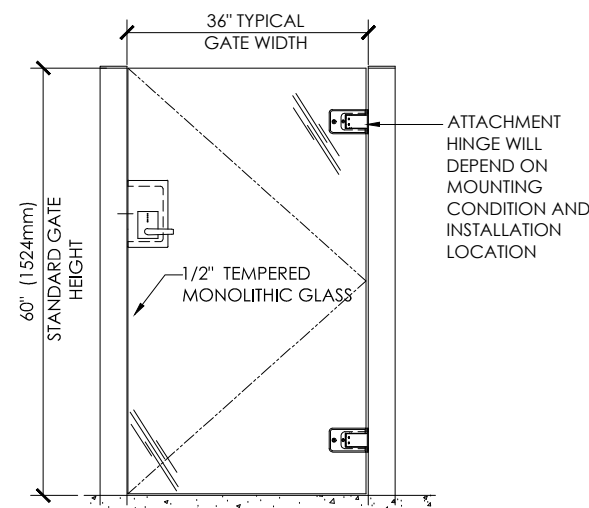
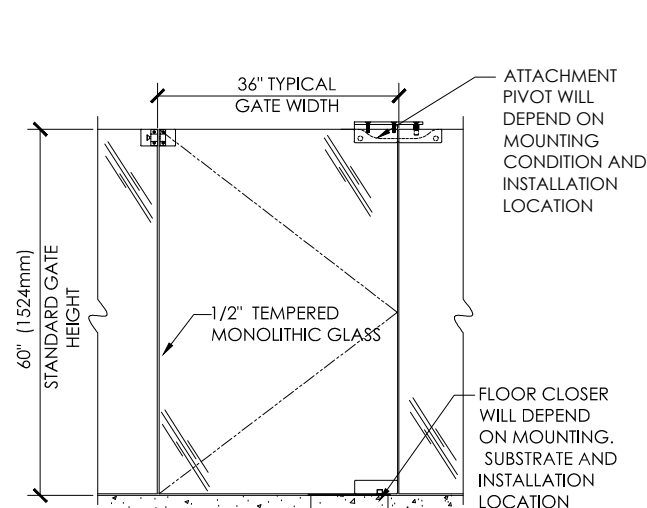


**CRL GRS SERIES GLASS GATE SYSTEMS FOR RAILING APPLICATIONS**



**CRL GRS SERIES GLASS GATE SYSTEMS FOR POOL SURROUNDS FENCING AND WINDSCREEN APPLICATIONS**

Revisions By:



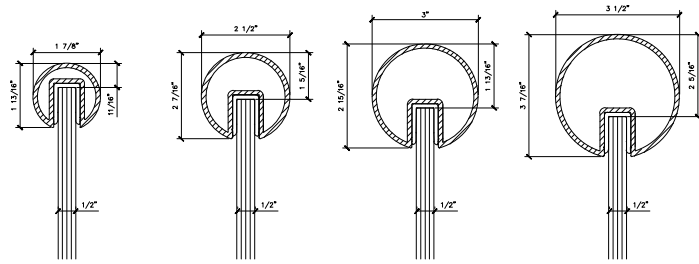
GRS GLASS SWING GATE SYSTEM DRAWING FILES

Drawn By: A.S.V.  
Date: 11-16-11  
Scale: as shown  
File Name: GRS11  
Sheet

**SHT-1**

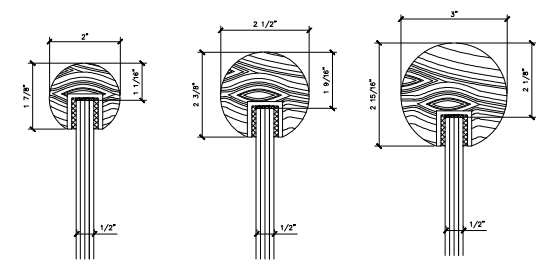
**CRL's GRS GLASS SWING GATE SYSTEM CAP RAIL PROFILES FOR MONOLITHIC TEMPERED GLASS APPLICATIONS**

**ALUMINUM SHAPES FOR 1/2" TO 5/8" GLASS**



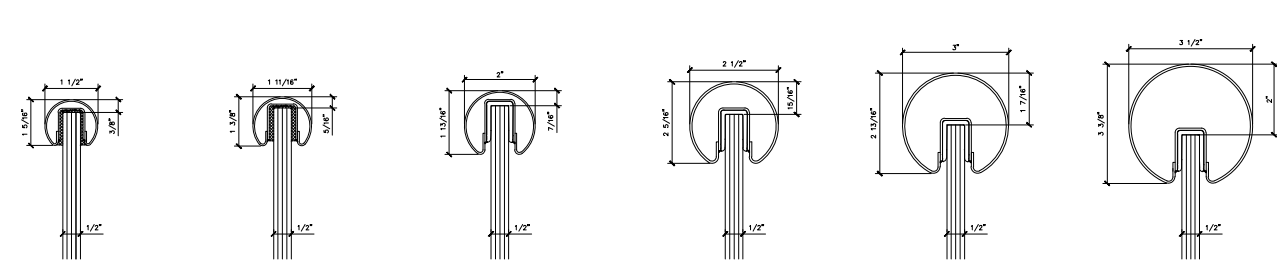
GR19M CAP RAIL 1.9" DIA FOR 1/2" TO 5/8" GLASS ALUMINUM  
 GR25M CAP RAIL 2-1/2" DIA FOR 1/2" TO 5/8" GLASS ALUMINUM  
 GR30M CAP RAIL 3" DIA FOR 1/2" TO 5/8" GLASS ALUMINUM  
 GR35M CAP RAIL 3-1/2" DIA FOR 1/2" TO 5/8" GLASS ALUMINUM

**WOOD SHAPES FOR 1/2" TO 5/8" GLASS**



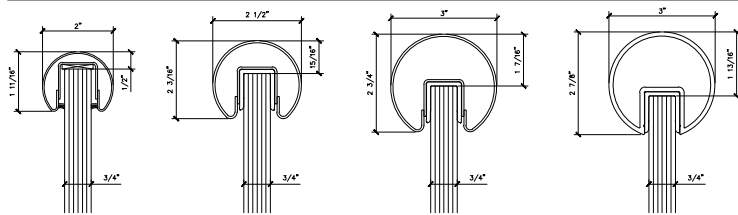
WCR20 CAP RAIL 2" DIA FOR 1/2" TO 5/8" GLASS WOOD  
 WCR25 CAP RAIL 2-1/2" DIA FOR 1/2" TO 5/8" GLASS WOOD  
 WCR30 CAP RAIL 3" DIA FOR 1/2" TO 5/8" GLASS WOOD

**STAINLESS STEEL SHAPES FOR 1/2" TO 5/8" GLASS**



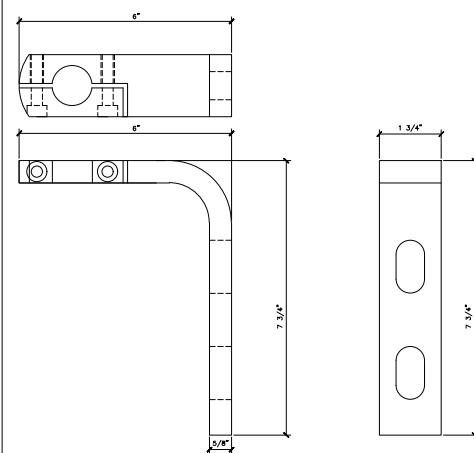
GR15 CAP RAIL 1-1/2" DIA FOR 1/2" TO 5/8" GLASS STAINLESS STEEL  
 GR16 CAP RAIL 1.66" DIA FOR 1/2" TO 5/8" GLASS STAINLESS STEEL  
 GR20 CAP RAIL 2" DIA FOR 1/2" TO 5/8" GLASS STAINLESS STEEL  
 GR25 CAP RAIL 2-1/2" DIA FOR 1/2" TO 5/8" GLASS STAINLESS STEEL  
 GR30 CAP RAIL 3" DIA FOR 1/2" TO 5/8" GLASS STAINLESS STEEL  
 GR35 CAP RAIL 3-1/2" DIA FOR 1/2" TO 5/8" GLASS STAINLESS STEEL

**SHAPES FOR 3/4" GLASS**



GR207 CAP RAIL 2" DIA FOR 3/4" GLASS STAINLESS STEEL  
 GR257 CAP RAIL 2-1/2" DIA FOR 3/4" GLASS STAINLESS STEEL  
 GR307 CAP RAIL 3" DIA FOR 3/4" GLASS STAINLESS STEEL  
 GR307M CAP RAIL 1-1/2" X 1-1/8" PROFILE FOR 3/4" GLASS ALUMINUM

**MISCELLANEOUS GATE HARDWARE**



AGT2 VERTICAL MOUNT PIVOT BRACKET

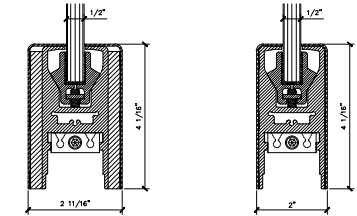
AGT3 HORIZONTAL MOUNT PIVOT BRACKET

CRL8010DP ADJUSTABLE DUAL-PURPOSE BOTTOM GATE PIVOT

CRL8010BP FREE-SWINGING BOTTOM GATE PIVOT

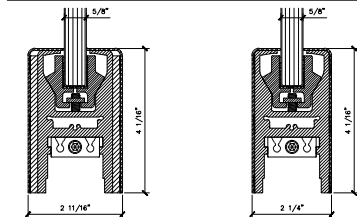
**CRL's GRS GLASS SWING GATE SYSTEM DOOR RAILS FOR MONOLITHIC TEMPERED GLASS APPLICATIONS**

**DOOR RAIL FOR 1/2" GLASS**



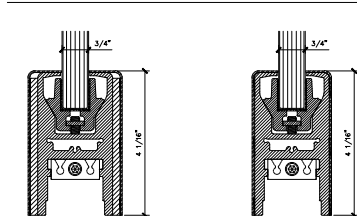
DR4S12C 4" CUSTOM WIDE DOOR RAIL FOR 1/2" GLASS  
 DR4S12 4" STANDARD DOOR RAIL FOR 1/2" GLASS

**DOOR RAIL FOR 5/8" GLASS**



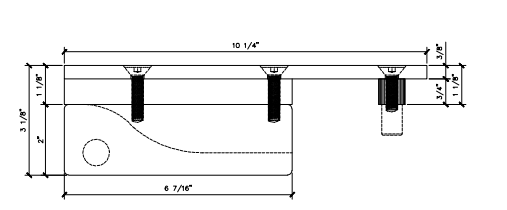
DR4S58C 4" CUSTOM WIDE DOOR RAIL FOR 5/8" GLASS  
 DR4S58 4" STANDARD DOOR RAIL FOR 5/8" GLASS

**DOOR RAIL FOR 3/4" GLASS**

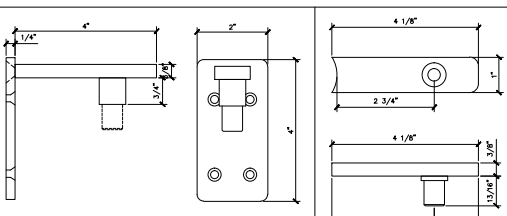


DR4S34C 4" CUSTOM WIDE DOOR RAIL FOR 3/4" GLASS  
 DR4S34 4" STANDARD DOOR RAIL FOR 3/4" GLASS

**MISCELLANEOUS GATE HARDWARE**

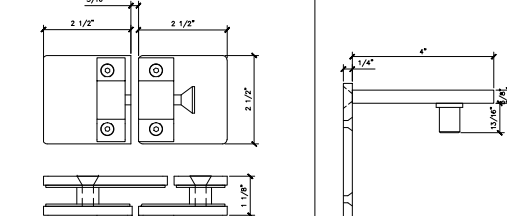


GGP12 GLASS-TO-GLASS GATE PIVOT PATCH



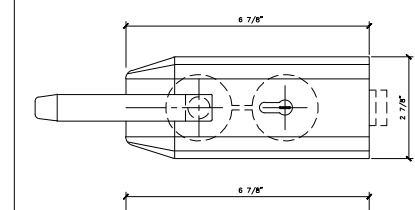
WGP22 WALL MOUNT GATE PIVOT

8100RP ROUND POST MOUNT GATE PIVOT

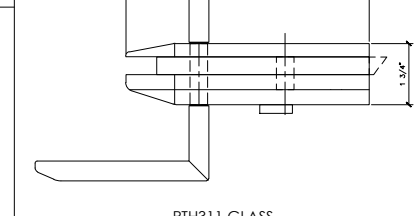


MLSP2 GLAS-TO-GLASS GATE LATCH

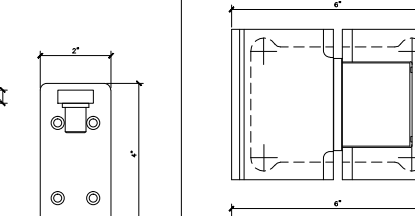
WDP32 WALL MOUNT GATE PIVOT



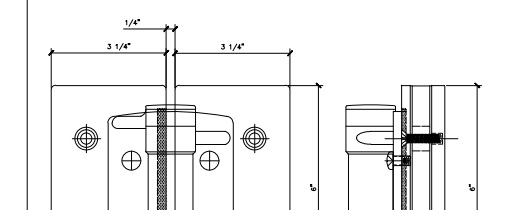
PTH31 GLASS MOUNTED LATCH



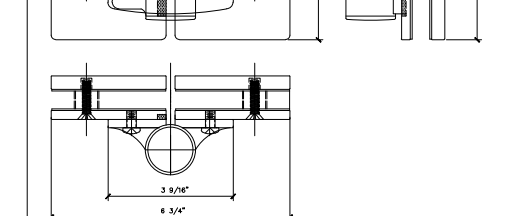
MLSP6BS 180 DEGREE GLASS-TO-GLASS HINGE



31M8015 GLASS-TO-GLASS GATE HINGE



LH10 LEVER LOCK



ATL01 WALL MOUNTED GATE HINGE

Revisions By:



GRS GLASS SWING GATE SYSTEM DRAWING FILES

Description:

Drawn By: A.S.V.  
 Date: 11-16-11  
 Scale: as shown  
 File Name: GRS11  
 Sheet

SHT-2