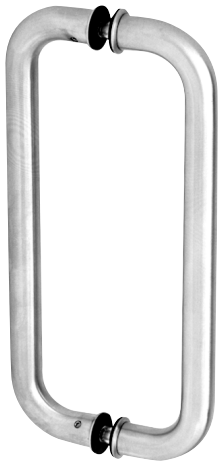


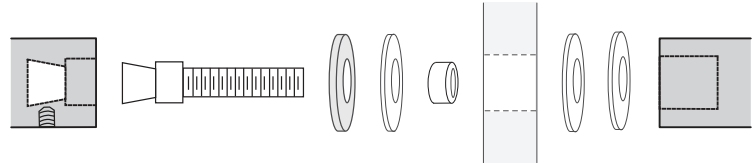
CRL ALUMINUM DOOR MOUNTED STANDARD PULL HANDLES

CRL SOLID GLASS MOUNTED STRAIGHT PULL HANDLE



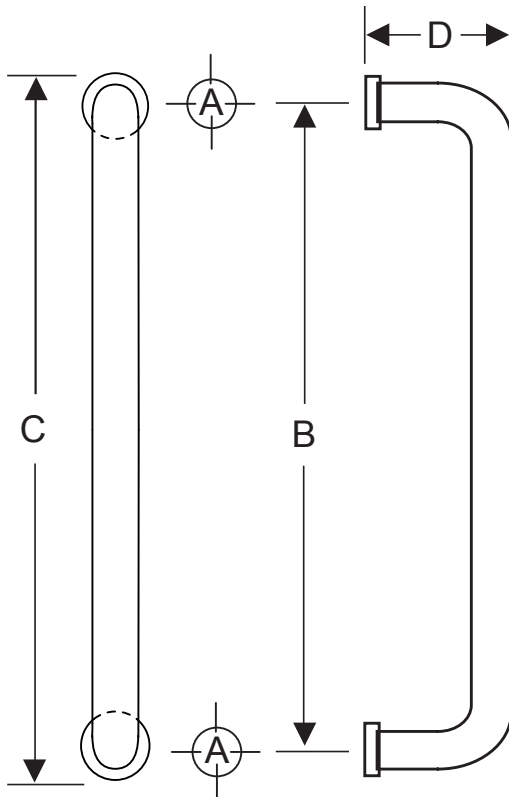
CAT. NO.
CS10X10
CS12X12

INCLUDED MOUNTING HARDWARE



5/16"-18 x 2" Back-to-Back
Glass Door Mount Shown

MOUNTING TEMPLATE



ADD TO CAT. NO. FOR FINISH

BR = POLISHED BRASS

BS = BRUSHED STAINLESS

PS = POLISHED STAINLESS

CAT. NO.	B	C	D
CM10X10	10" (254 mm)	11" (279 mm)	3" (76 mm)
CM12X12	12" (305 mm)	13" (330 mm)	3" (76 mm)

Mounting Options	Glass 3/8"-3/4" (10-19 mm)
Mounting Hardware	Included

NOTE: Optional hardware kits must be purchased separately.

