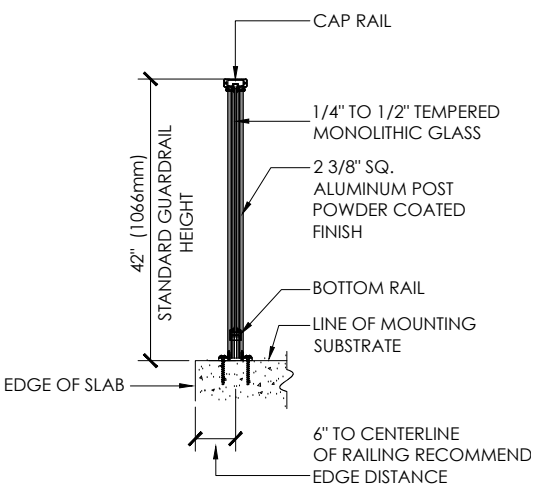
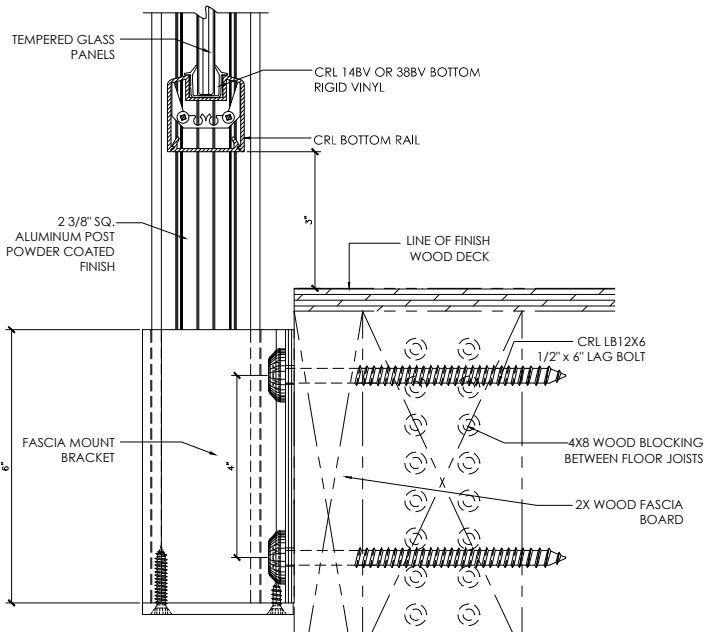


TYPICAL ALUMINUM RAILING ELEVATION

ARS ALUMINUM RAILING SYSTEM FOR GLASS



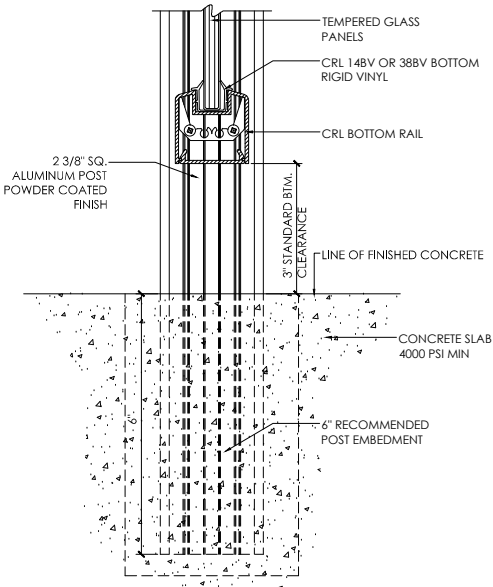
TYPICAL SECTION



WOOD SUBSTRATE
TYPICAL FASCIA MOUNT DETAIL

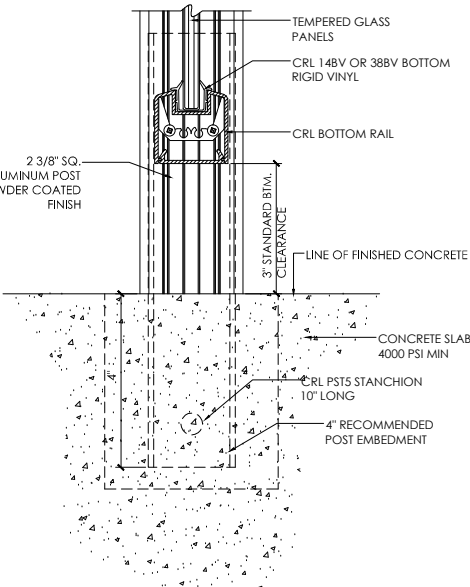
SPACING WILL DEPEND ON MOUNTING SUBSTRATE AND REGION OF PROJECT

TYPICAL ARS ATTACHMENTS



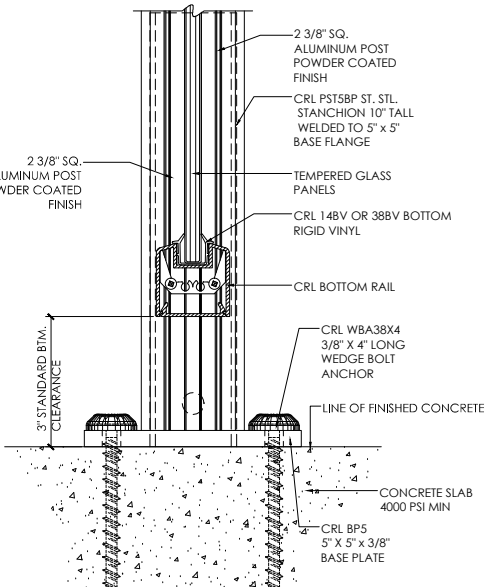
CONCRETE SUBSTRATE
TYPICAL CORE MOUNT DETAIL

SPACING WILL DEPEND ON MOUNTING SUBSTRATE AND REGION OF PROJECT



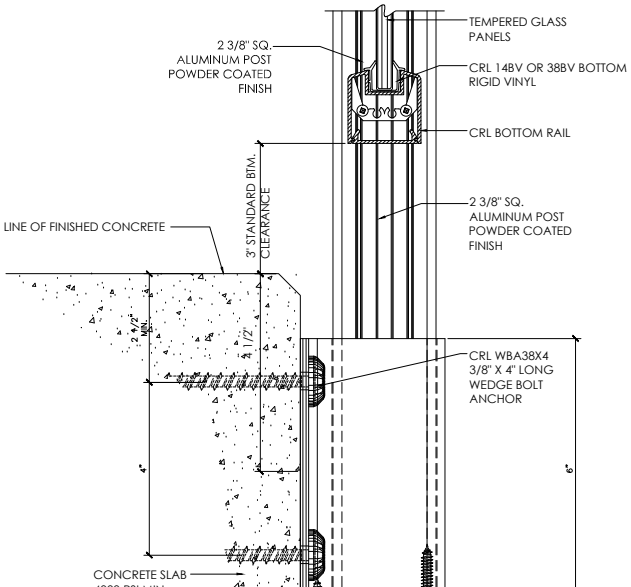
CONCRETE SUBSTRATE
TYPICAL CORE MOUNT WITH STANCHION DETAIL

SPACING WILL DEPEND ON MOUNTING SUBSTRATE AND REGION OF PROJECT



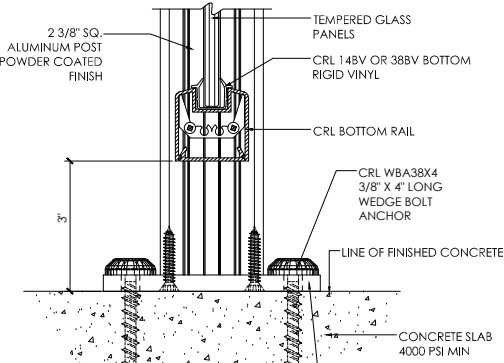
CONCRETE SUBSTRATE
TYPICAL SURFACE MOUNT WITH STANCHION DETAIL

SPACING WILL DEPEND ON MOUNTING SUBSTRATE AND REGION OF PROJECT



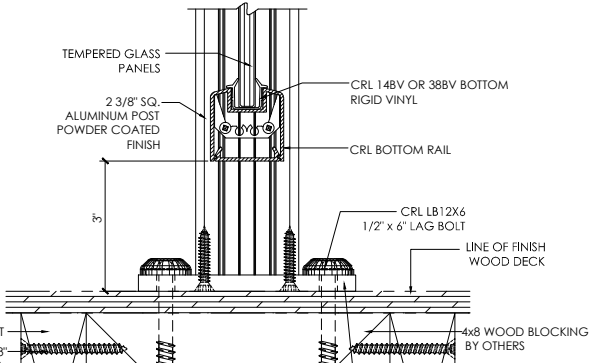
CONCRETE SUBSTRATE
TYPICAL FASCIA MOUNT DETAIL

ANCHOR SPACING WILL DEPEND ON MOUNTING SUBSTRATE AND REGION OF PROJECT



CONCRETE SUBSTRATE
TYPICAL SURFACE MOUNT DETAIL

SPACING WILL DEPEND ON MOUNTING SUBSTRATE AND REGION OF PROJECT



WOOD SUBSTRATE
TYPICAL SURFACE MOUNT DETAIL

SPACING WILL DEPEND ON MOUNTING SUBSTRATE AND REGION OF PROJECT

Revisions By:

Description:

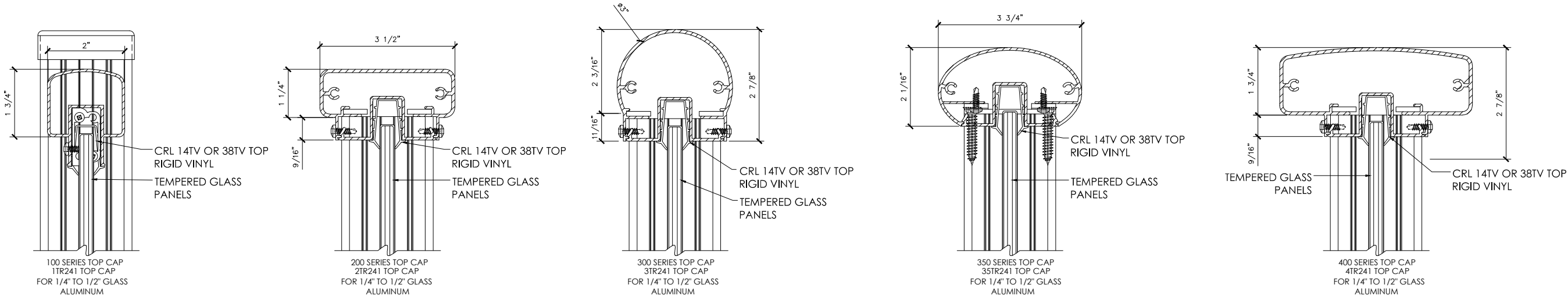
ARS ALUMINUM RAILING
SYSTEM FOR GLASS
DRAWING FILES

Drawn By: A.S.V.
Date: 11-18-11
Scale: as shown
File Name: ARS
Sheet

SHT-1

CRL's ARS GLASS RAILING SYSTEM TOP CAP PROFILES
FOR MONOLITHIC TEMPERED GLASS APPLICATIONS

ALUMINUM SHAPES FOR 1/4" TO 1/2" GLASS



Revisions By:



Description:

ARS ALUMINUM RAILING
SYSTEM FOR GLASS
DRAWING FILES

Drawn By: A.S.V.
Date: 11-18-11
Scale: as shown
File Name: ARS
Sheet

SHT-2