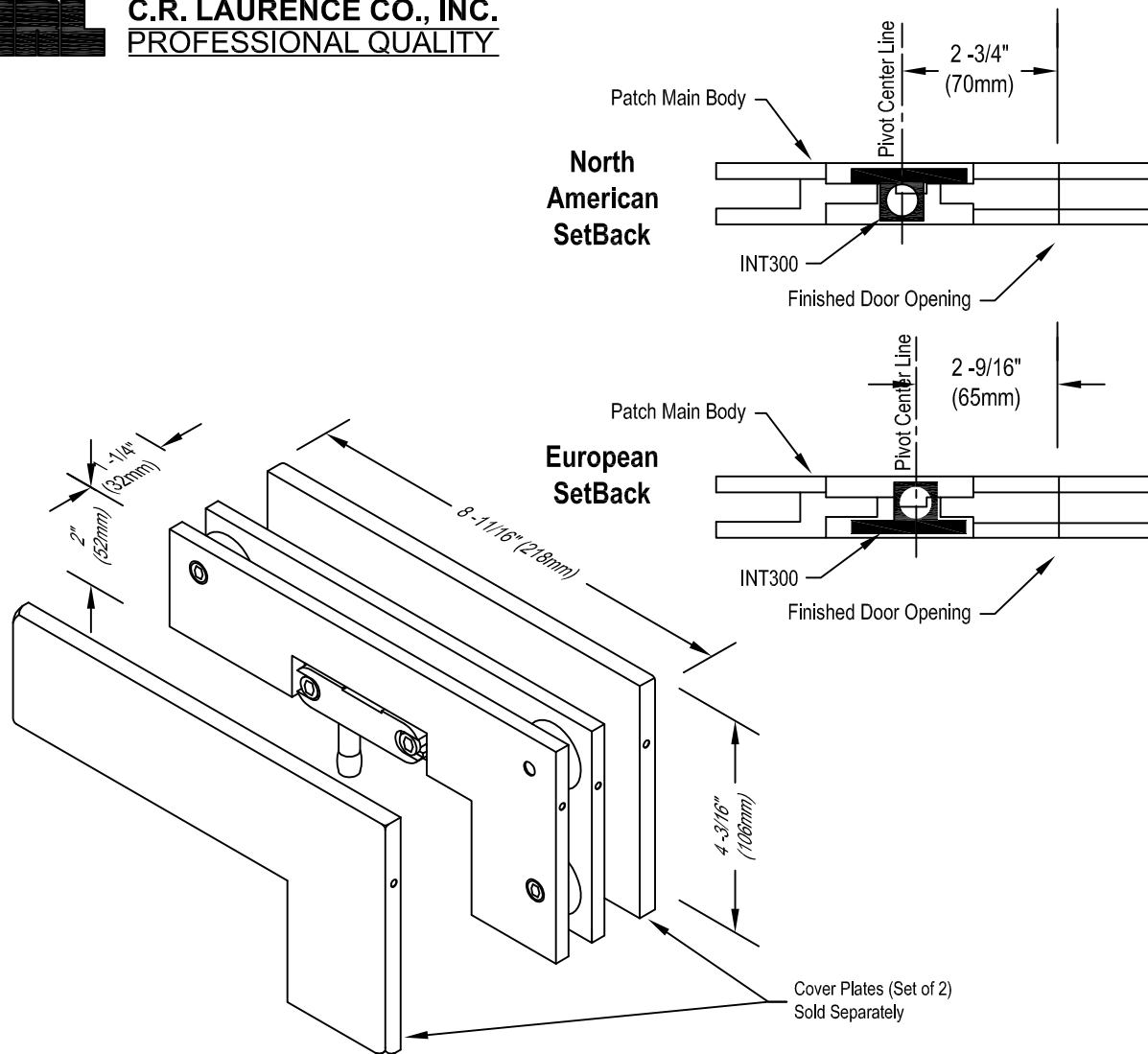




**C.R. LAURENCE CO., INC.**  
**PROFESSIONAL QUALITY**



## Important Information:

The PH40 Sidelite Mount Transom Patch is designed for 2 -3/4" (70mm) and 2 -9/16" (65mm) setbacks. This dimension is measured from the "finished" door opening to the pivot center line. When using the PH40 Sidelite Mount Transom Patch simply reverse the INT300 pivot insert to match either setback.

## Specifications:

**Glass Sizes:** 3/8" (10mm) to 1/2" (12mm) thick tempered safety glass

**Construction:** High density casting

**Cutout and Holes Required**

**Includes:** Gaskets, screws and template

**Insert:** (Included) - INT300 Pivot Insert

**Accessories:** (Included) - None

**Available Finishes:**

- PH40A Satin Aluminum
- PH40BR Polished Brass (Lacquered)
- PH40BS Brushed Stainless Steel
- PH40PS Polished Stainless Steel

## Use of Gaskets:

**For 3/8" (10mm) Glass:** Use two gaskets on each side

**For 1/2" (12mm) Glass:** Use one gasket on each side

## Recommendations:

For public safety, we recommend the use of only tempered safety glass.

**SEE TEMPLATE ON BACK**  
**Refer to Dimensions Shown**  
**to Ensure Accuracy**

## CRL SIDELITE MOUNTED TRANSOM PATCH

North American 2 -3/4" (70mm) SetBack OR

European 2 -9/16" (65mm) SetBack

Includes INT300 Insert, Cover Plates

**Cat No. PH40**