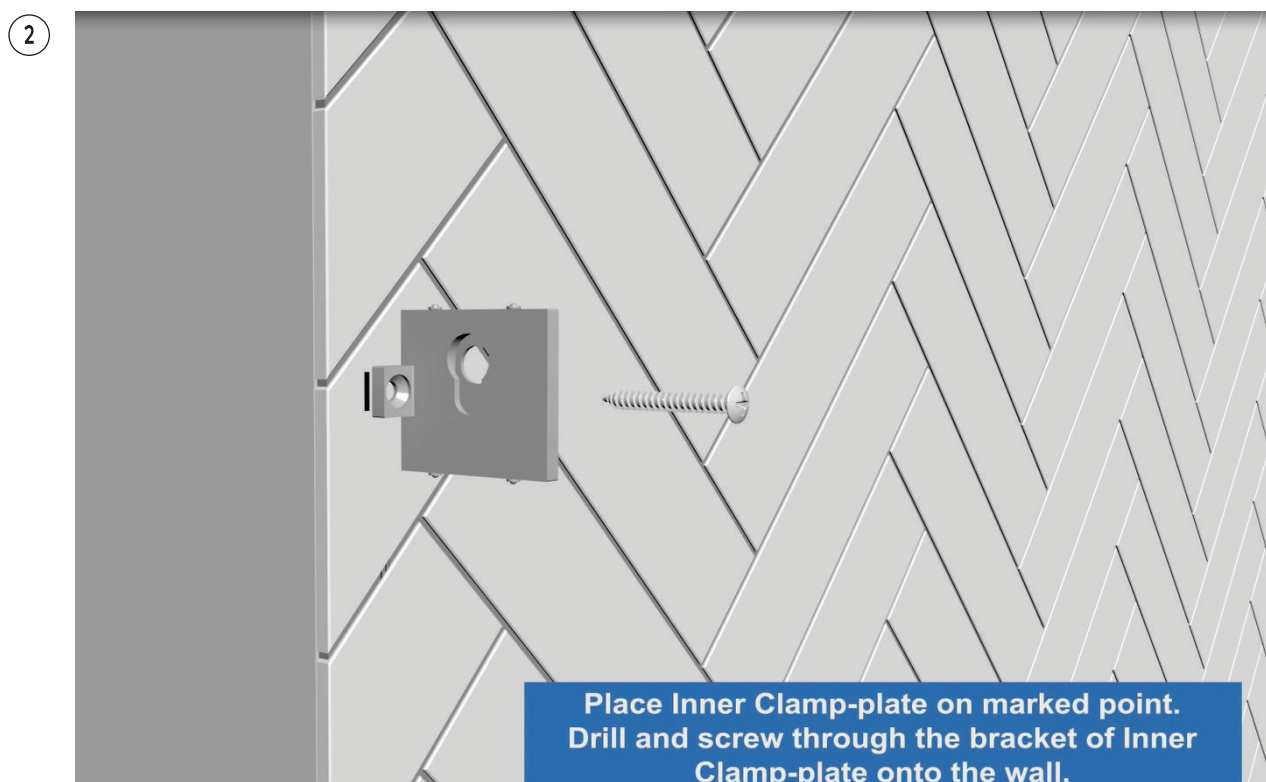
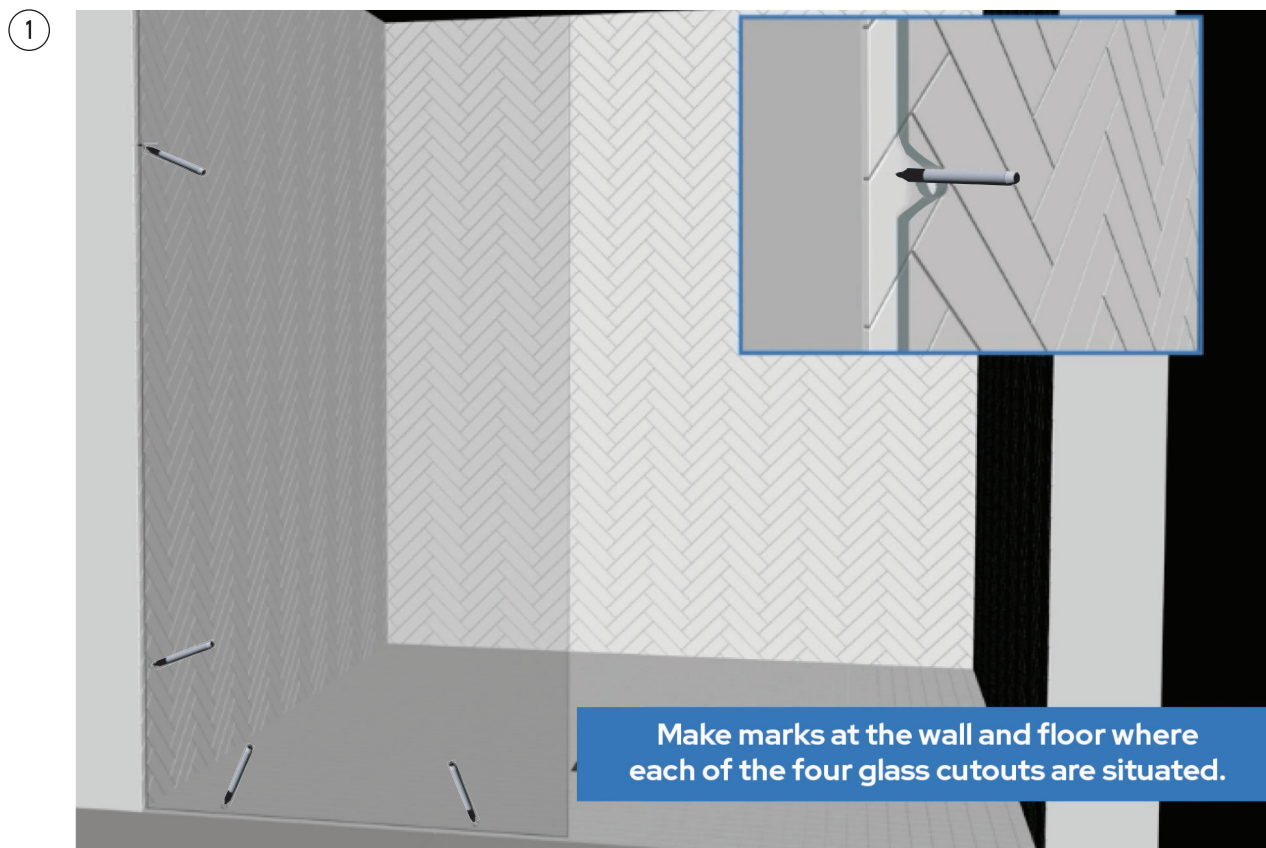
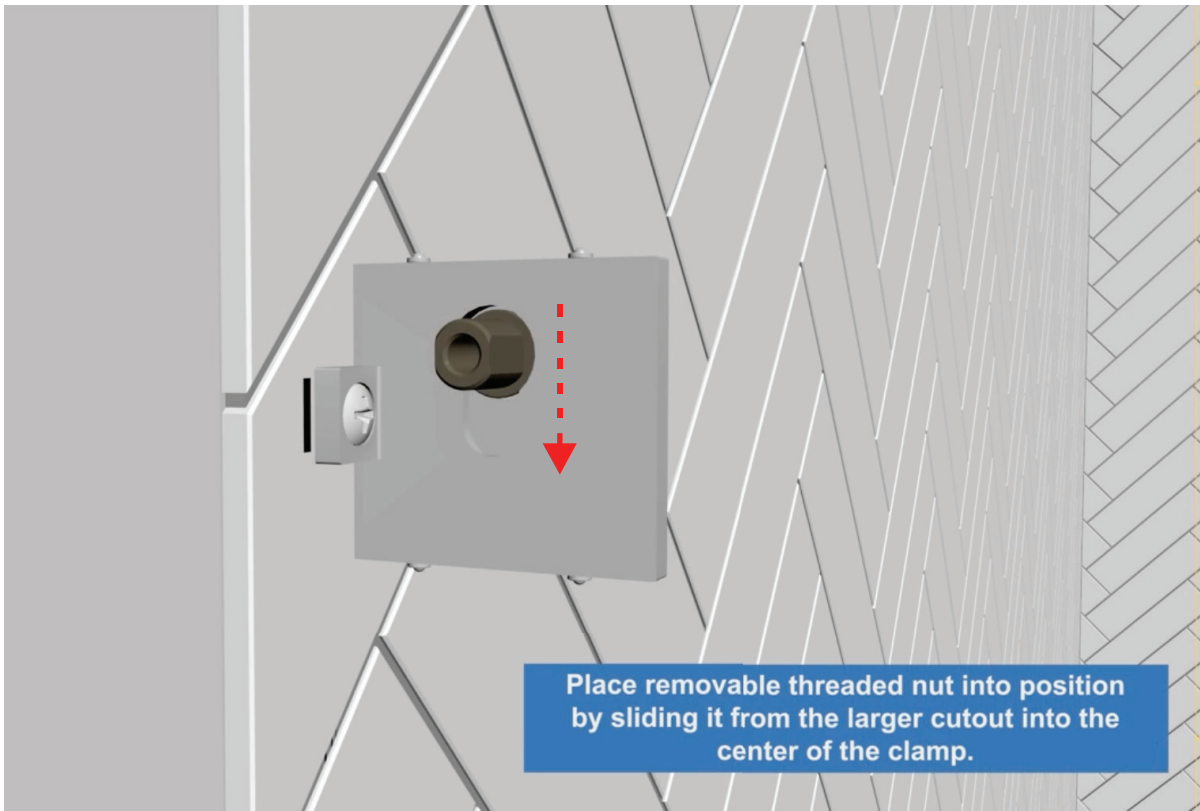


**CCS4  
ZERO CLAMP  
Wall, Glass & Transom Clamp**

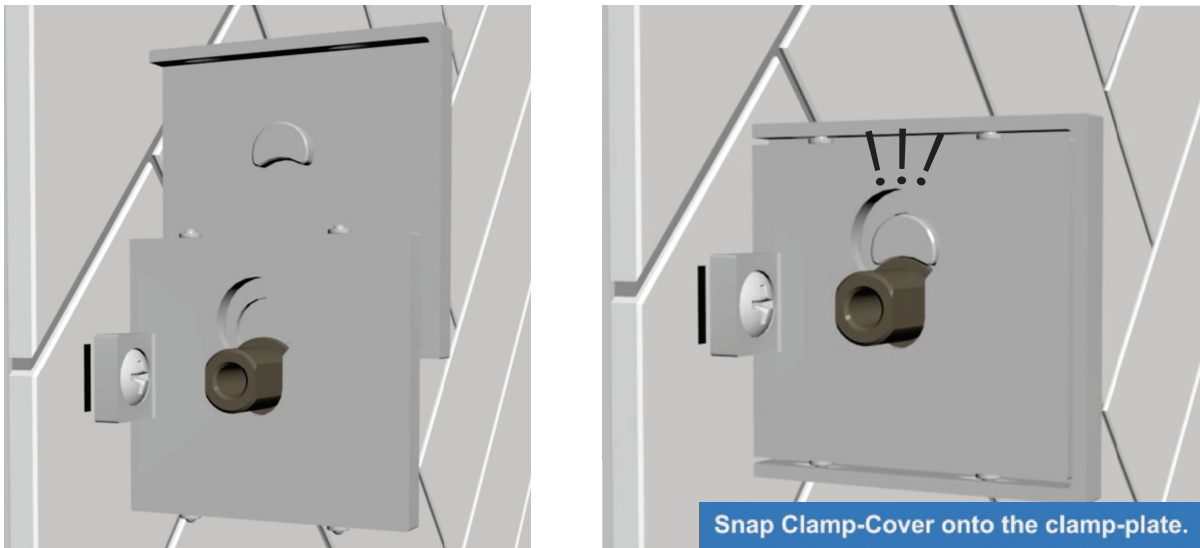




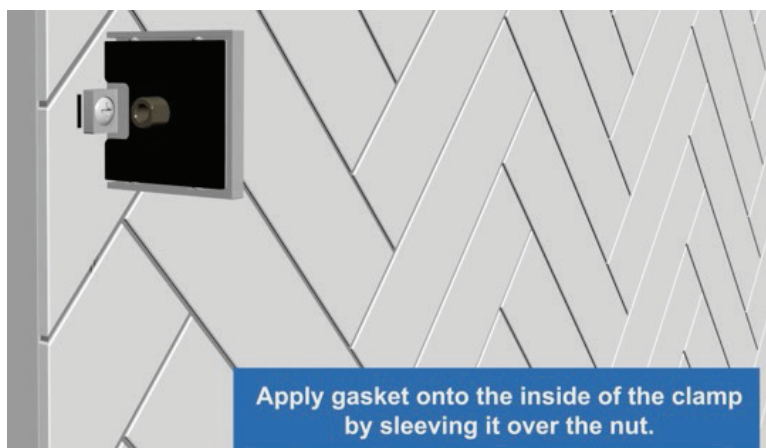
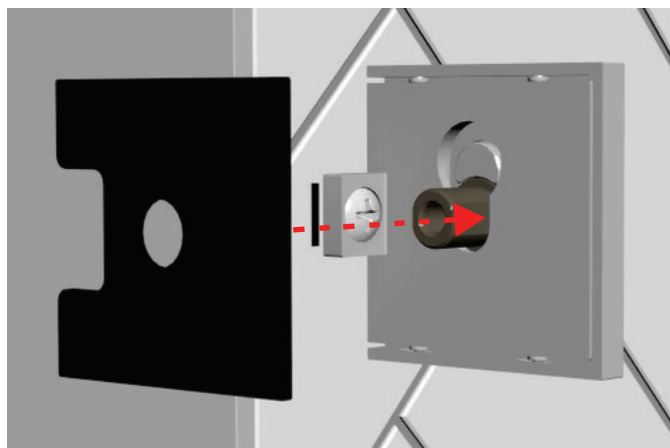
3



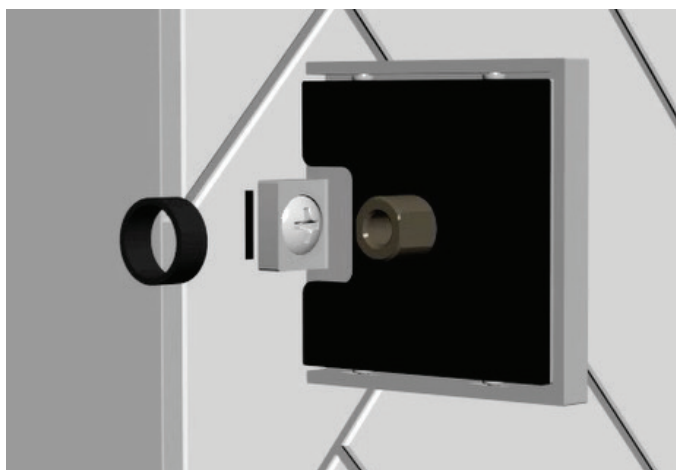
4



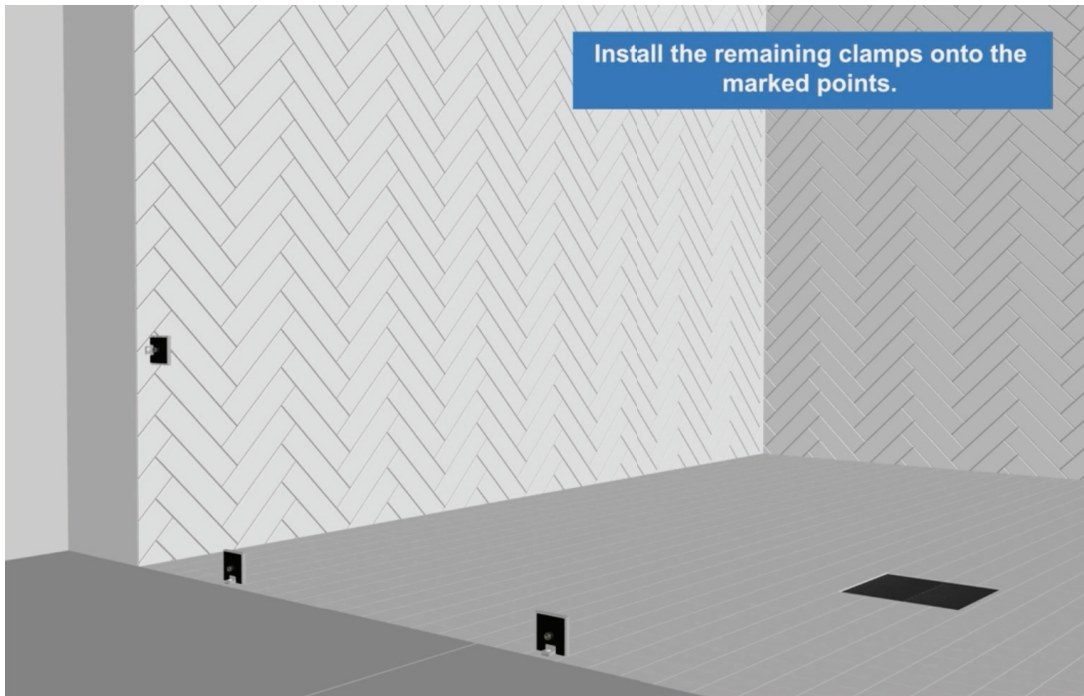
5



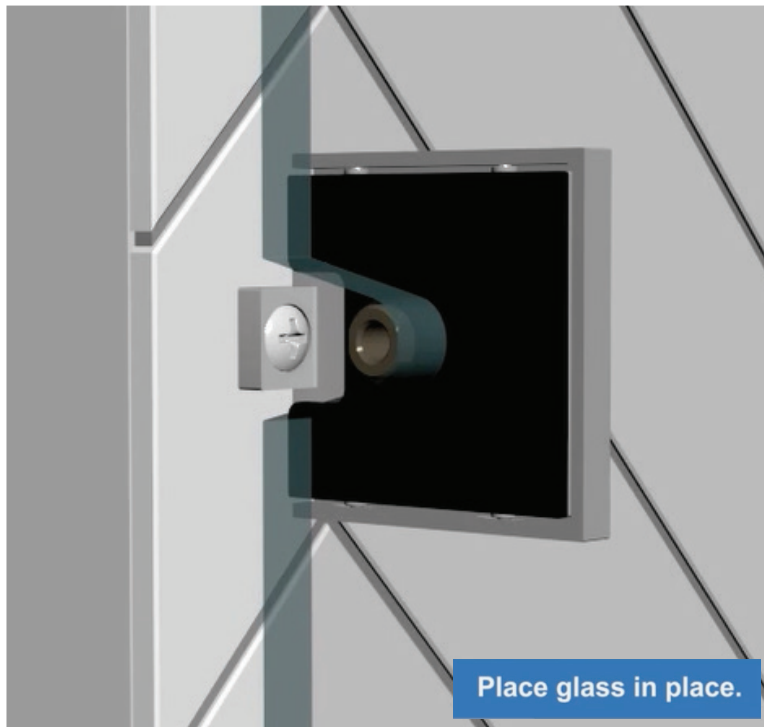
6



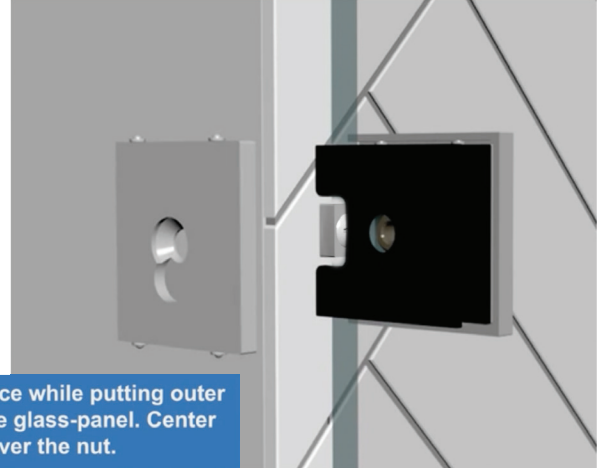
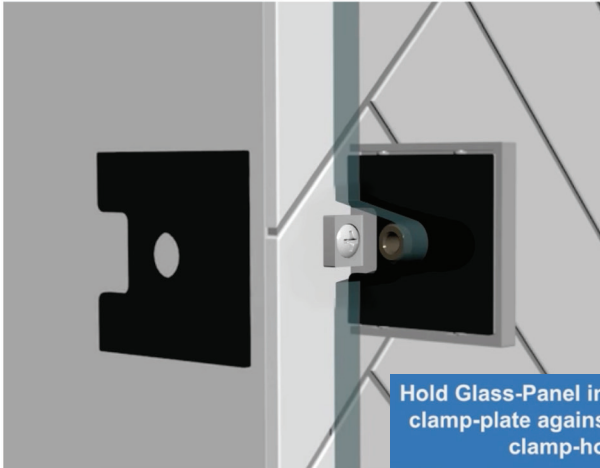
7



8

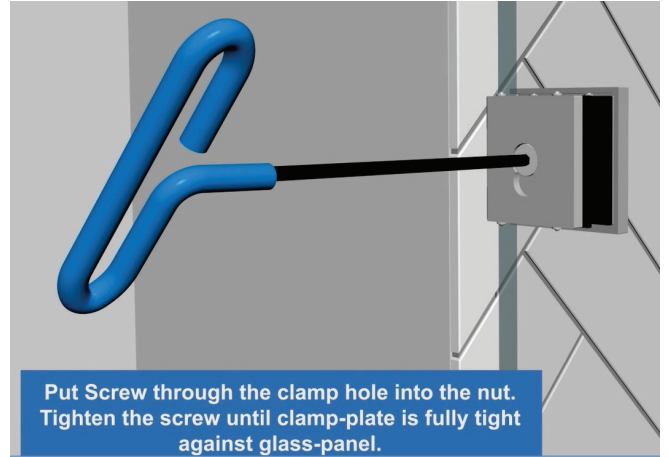
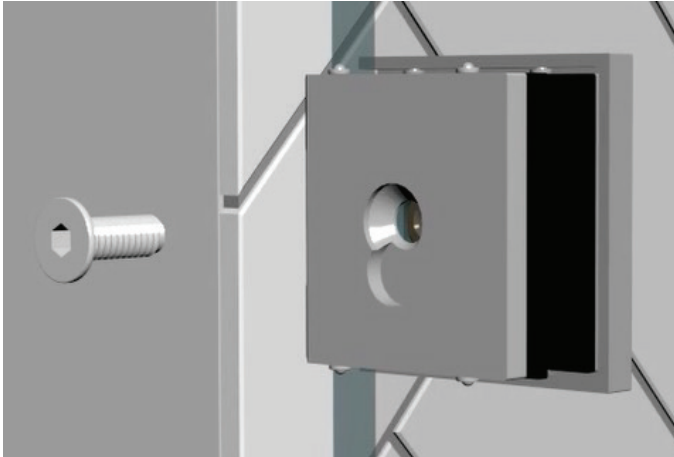


9



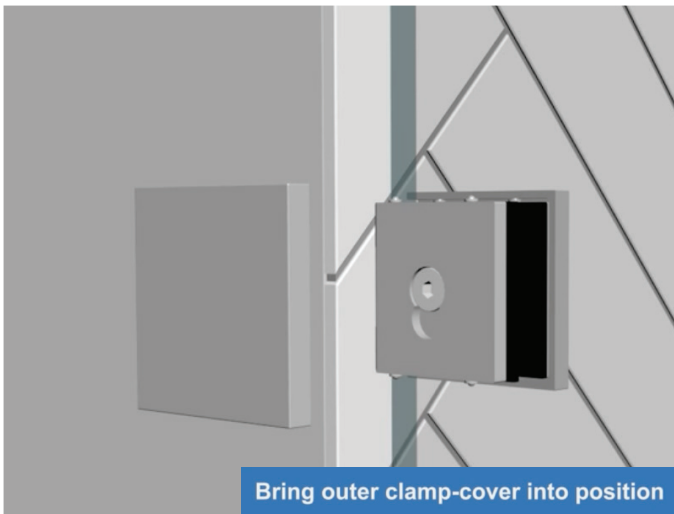
Hold Glass-Panel in place while putting outer clamp-plate against the glass-panel. Center clamp-hole over the nut.

10



Put Screw through the clamp hole into the nut. Tighten the screw until clamp-plate is fully tight against glass-panel.

11

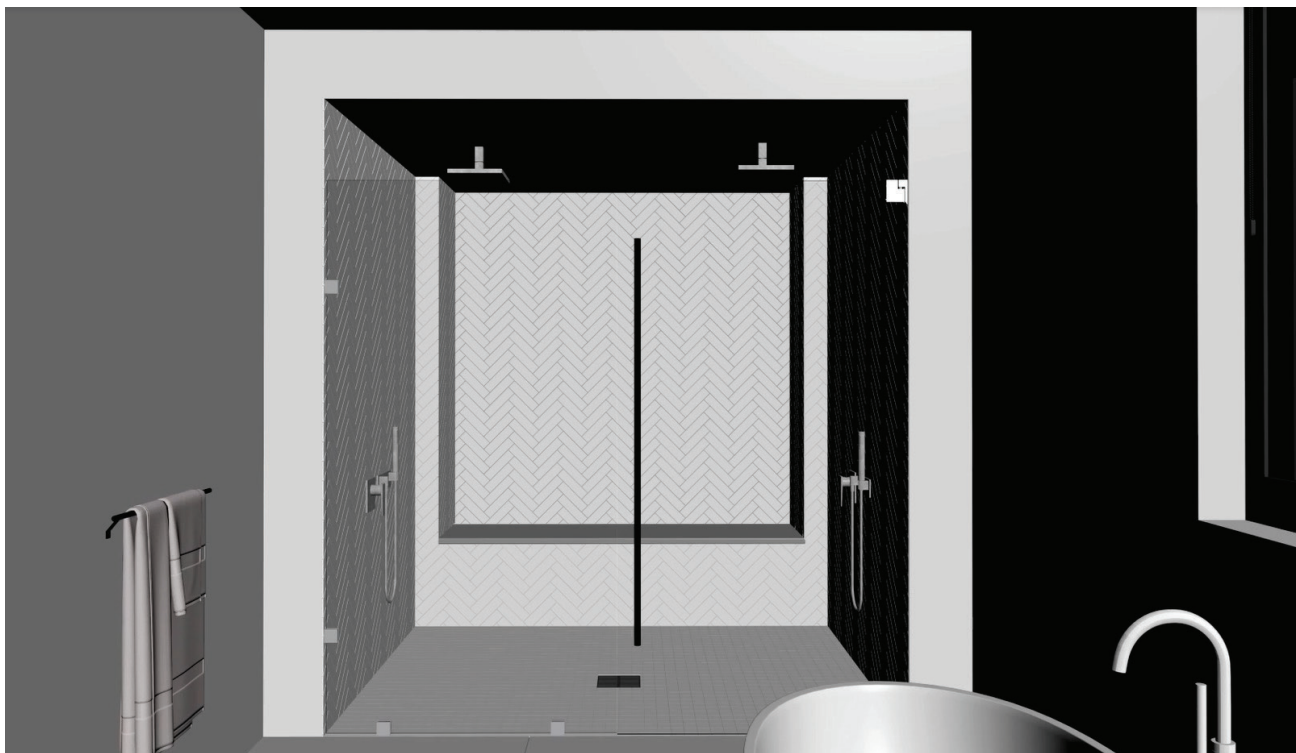
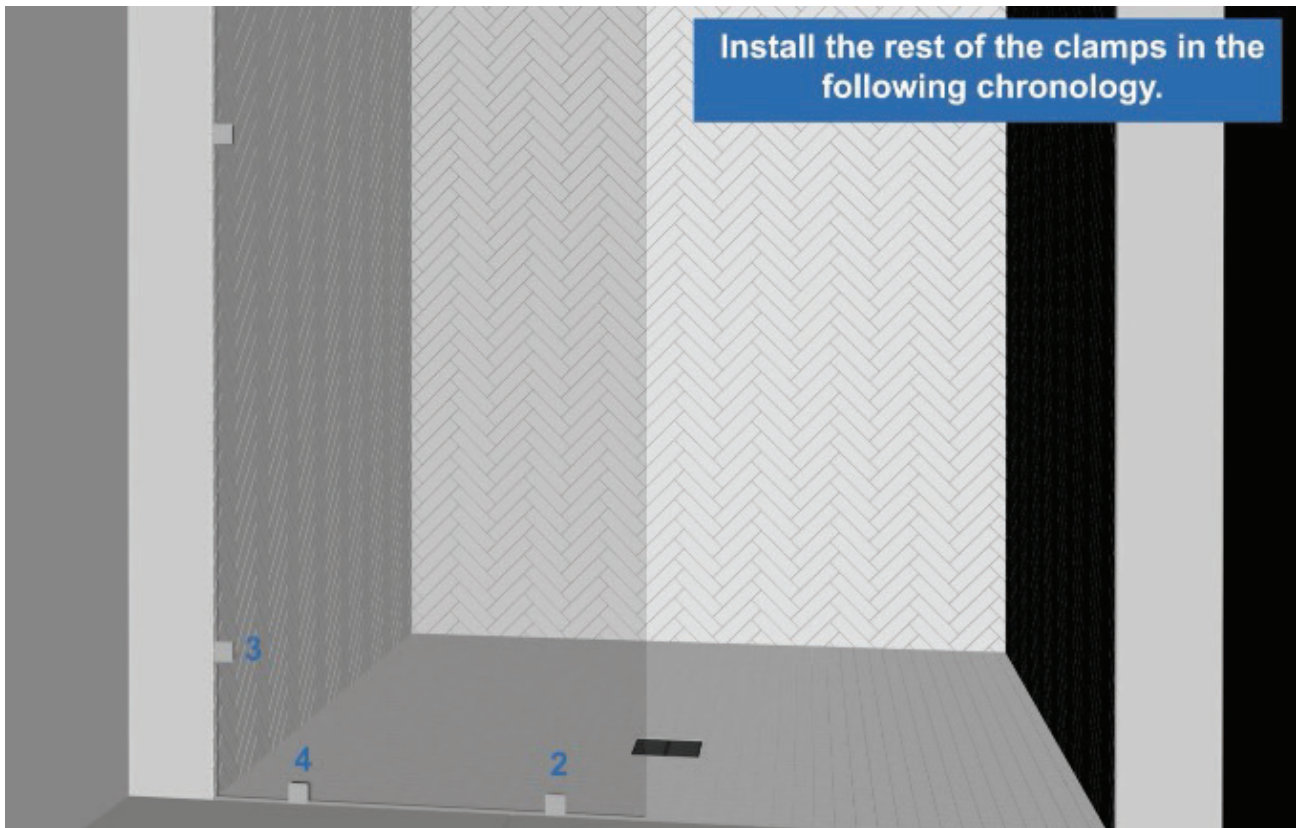


Bring outer clamp-cover into position



Snap out clamp cover onto the outer clamp-plate.

12



## Application Options by Usage

### 1. Wall-to-Glass Transom Applications:

- a. Please apply the furnished washer to allow the clamp to rotate.

### 2. 180° Glass-to-Glass Applications:

- a. Two (2) Zero Clamps are required
- b. Clamps are furnished with a machined screw and nut, for back-to-back connection to accommodate a secure glass-to-glass installation.

### 3. Fixed Panel to Transom:

- a. Four (4) Zero Clamps are required
- b. This installation is similar to the Glass-to-Glass setup but also requires the addition of two (2) washers and two (2) nylon lock nuts between the clamps to allow the clamps to rotate against each other.  
(Contact our customer support team if you require a nylon lock nut).

This guide is designed to assist with both fixed panel-to-fixed-panel and fixed panel-to-transom applications. Feel free to reach out if you have any questions or need further clarification! 1.800.421.6144