

**Oldcastle BuildingEnvelope®**

***SERIES 3000XT STOREFRONT  
INSTALLATION AND GLAZING MANUAL***

# SERIES 3000XT INSTALLATION MANUAL

## TABLE OF CONTENTS

|  |             |
|--|-------------|
| General Information .....                          | Pages 3-5   |
| Frame Fabrication and Cut List .....               | Page 6      |
| Sill Receptor:                                     |             |
| Thermal Performance Recommendations .....          | Page 7      |
| Installation & Splicing .....                      | Page 8      |
| Outside Glazed System:                             |             |
| Screw Spline Assembly .....                        | Page 9      |
| Shear Block Assembly .....                         | Page 10     |
| Glazing Guidelines .....                           | Page 11     |
| Glazing Detail .....                               | Page 12     |
| Inside Glazed System:                              |             |
| Screw Spline Assembly .....                        | Page 13     |
| Shear Block Assembly .....                         | Page 14     |
| Glazing Guidelines .....                           | Page 15     |
| Glazing Detail .....                               | Page 16     |
| Mullion Fabrication using Drill Fixtures:          |             |
| Outside Glazed, Screw Spline or Shear Blocks ..... | Page 17     |
| Inside Glazed, Screw Spline or Shear Blocks .....  | Page 18     |
| Frame Installation:                                |             |
| Detail and Notes .....                             | Page 19     |
| Anchorage and Perimeter Seal .....                 | Page 20     |
| Glazing Adaptors .....                             | Page 21     |
| Expansion Mullion .....                            | Page 22     |
| Corners .....                                      | Page 23     |
| Entrance Framing .....                             | Page 24     |
| Parts List .....                                   | Pages 25-26 |

# SERIES 3000XT INSTALLATION MANUAL

The Oldcastle BuildingEnvelope® Series 3000XT (2" x 4-1/2") system represents the latest in product development technology complemented by installer on-the-job input and experience. Proper use of this system will assure optimum results in erection and long-term performance.

Over the years many components were added to our flush glaze systems. In addition, there are many ways to install storefront products. This manual represents recommendations for the best results.

## BUILDING CODES

Oldcastle BuildingEnvelope® does not control the application nor selection of its product configurations, sealant, or glazing materials and assumes no responsibility thereof. It is the responsibility of the owner, architect, and installer to make these selections in strict compliance with applicable laws and building codes.

## INSTALLER QUALIFICATIONS

The Series 3000XT storefront system is intended for fabrication, assembly, sealing, installation and glazing by professionals with appropriate knowledge and experience of the system(s) and their incorporation into various building conditions.

## GLAZING PRACTICES

The air and water performance of the framing system is directly related to the completeness and integrity of the installation process, including but not limited to the assembly seals of the framing joinery, the installed glazing gaskets, and the alignment of the framing joinery glazing plane. Before glazing, verify the glazing pocket width and glazing infill thickness, as both must be in tolerance to assure adequate edge pressure and to achieve the desired air and water performance levels. (In general, framing systems utilizing 1" insulating glass are designed to accommodate a thickness variance of +/- 1/32"). Note: Excessive pressure can cause glass breakage and/or IGU failure. Consult the glass manufacturer for their recommended edge pressure per lineal inch.

To achieve the designed and tested air and water performance, best practices include:

- Glazing gaskets should be cut ¼" longer per foot, and lay flat, preferably for 24 hours.
- Gaskets should be cut as single monolithic pieces and "crowded" during their installation to avoid corner gaps caused by post-installation relaxation.
- The interior glazing gasket should be installed so as to avoid stretching, buckles, or tears.
- Corners must be cut square, and at a slight angle when required to conform to the bevel on the intersecting gasket; sealed and butted together.
- Gasket corner joinery must also be crowded, and sealant applied onto the gasket contact frame surface and into gasket reglet raceway where applicable.
- Gasket corner seals are to be done just prior to installing glass, while the sealant is still wet and uncured, and ensure exterior gaskets are installed so as to place the glass into it's final in service condition and allow the sealant to conform to optimum configuration. Note: If the sealant cures prior to glazing, the cured sealant could create excessive edge pressure onto the glass and has the potential to cause glass breakage.
- The glass must be checked for squareness, size dimension, and thickness along the edges paying attention to any variances from center edge to corner edge.
- Check the placement of the installed glass and verify there is proper edge bite into the pocket, and proper edge clearance from framing elements.

# **SERIES 3000XT INSTALLATION MANUAL**

After sealant has set and a representative amount of the wall has been installed and glazed (250 square feet or more) run a water hose test in accordance with AAMA 501.2 specifications to check installation. On large projects the hose test should be repeated during the glazing operation. Consult and follow NGA's GANA Manual and FGMA Glazing Manual for proper glazing technique and procedure.

## **MATERIAL HANDLING, PROTECTION, AND STORAGE:**

Handle the material carefully. Do not drop from the truck. Stack with adequate separation so that the material will not rub together. Store material off the ground. Protect against the elements and other construction hazards by using a well-ventilated covering. Remove material from package if it is wet or is located in a wet area.

### **SHOP**

- Cardboard wrapped or paper interleaved material must be kept dry.
- Check arriving materials for quantity and keep record of where various materials are stored.

### **JOB SITE**

- Material at job site must be stored in a safe place well removed from possible damage by other trades.
- Cardboard wrapped or paper interleaved materials must be kept dry.
- Keep record of where various materials are stored.
- Protect materials after erection. Cement, plaster, and other alkaline solutions are very harmful to the finish.

## **CHECK MATERIAL:**

Check all material upon arrival for quality and to assure against shipping damage. Any visible damage must be noted on the freight bill at the time of receipt. If a claim is required, then the receiving party must process a claim with the freight company.

Completely check construction, which will receive your materials against contract documents. Notify general contractor by letter of any discrepancies before proceeding with work. Failure to do so constitutes acceptance of work by other trades.

Check shop drawings and installation instructions to become familiar with the project. The shop drawings take precedence and include specific details for the project. The installation instructions are of a general nature and cover the most common conditions. Due to varying job conditions, all sealants used should be approved by the sealant manufacturer, to insure they will function for conditions shown on instructions and shop drawings. They must be compatible with all surfaces in which adhesion is required, including other sealant surfaces. Use primers where directed by manufacturer of sealant. Be sure to properly store sealants at recommended temperatures and check sealant for remainder of shelf life before using.

# **SERIES 3000XT INSTALLATION MANUAL**

## **FIELD CONDITIONS:**

- Do not install wall if there is a walkway with a down slope towards an entrance or a storefront.
- All materials to be installed plumb, level and true. Aluminum to be placed in direct contact with the masonry or incompatible materials should be isolated with a heavy coat of zinc-chromate or bituminous paint.
- After sealant is set and a representative amount of wall has been glazed (250 square feet of more), run a water hose to check installation. On large jobs, hose test should be repeated during glazing operation. Test should be conducted in accordance with AAMA 501.2 specifications.
- Coordinate protection of installed materials with general contractors and other trades.

## **CLEANING MATERIALS:**

Cement, plaster, terrazzo, alkaline and acid based materials used to clean masonry are very harmful to finishes and should be removed with water and a mild soap immediately or permanent staining will occur. A spot test is recommended before any cleaning agent is used.

## **EXPANSION JOINTS:**

Expansion joints and perimeter seals shown in these instructions and in the shop drawings are shown at normal size. Actual dimensions may vary due to perimeter conditions and/or differences in metal temperature between the time of fabrication and time of installation. For example, a 12-foot unrestrained length of aluminum extrusion can expand or contract 3/32 of an inch over a 50 degree Fahrenheit change. Any movement potential should be accounted for at time of the installation.

## **THERMAL IMPROVEMENT SUGGESTIONS:**

To maintain or improve your wall installation, the following items should be considered:

1. Blinds or drapes prevent warm air from washing the window.
2. Warm air ventilators too far from window will not adequately wash the window with air to prevent condensation.
3. In extreme conditions, the fan of the heating systems should not cycle on and off but run continuously.
4. Some heating systems have a water injection feature that can raise humidity levels. The higher the humidity levels the more likely condensation or frost will form. Raising the temperature and reducing humidity will usually solve this problem.
5. On rare occasions, an extremely cold storm may cause frost to appear on the glass or framing. A space heater and electric fan blowing along the plane of the window wall can reduce or eliminate this temporary condition.

## **FABRICATION SUGGESTIONS:**

Oldcastle BuildingEnvelope® recommends the use of our EZ Punch tooling for faster and more accurate fabrication of wall systems. If hand fabricating the mullions; drill fixtures are available to improve accuracy. Fabrication instructions for use of these drill fixtures are described within this manual on page 17.

# SERIES 3000XT INSTALLATION MANUAL

## OUTSIDE GLAZED GLAZING GUIDELINES

Measure ROUGH OPENING to determine FRAME WIDTH and FRAME HEIGHT dimensions. Allow 1/2" minimum clearance at head and 1/4" minimum clearance at jambs and sill for shimming and caulking around perimeter frame.

Cut material to size per dimensions given below:

### Frame Members

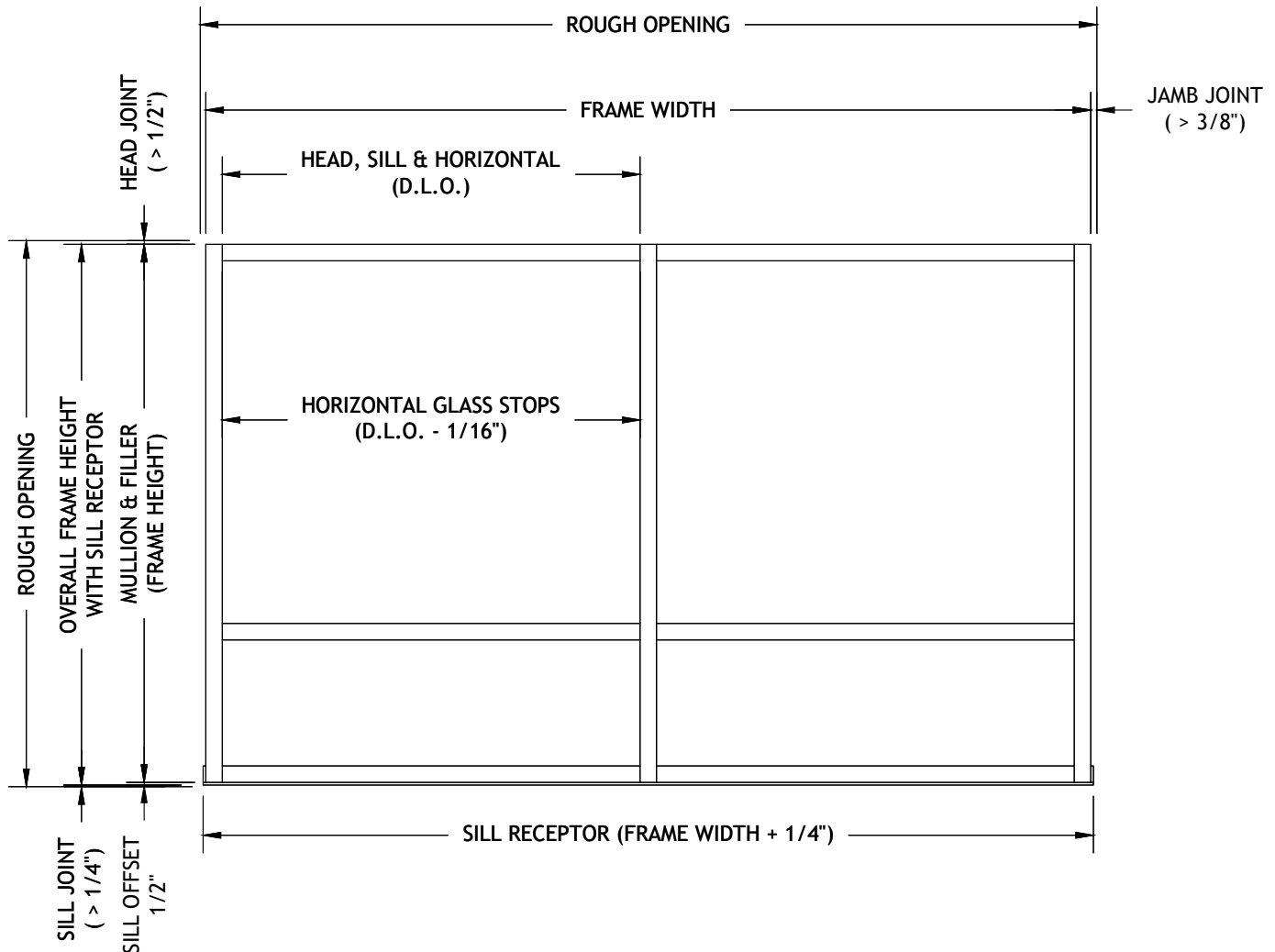
|                               |  |
|-------------------------------|--|
| Mullions and Mullion Fillers: | Frame Height (Rough Opening - Head & Sill Joints - 1/2") |
| Sill Receptor:                | Frame Width + 1/4"                                       |
| Horizontal, Head & Sill:      | Day Light Opening (DLO)                                  |
| Glass Stops:                  | DLO - 1/16"  |

### Gaskets

|                     |                          |
|---------------------|--------------------------|
| Horizontal Gaskets: | DLO + 1/4" per foot      |
| Vertical Gaskets:   | DLO + 1" + 1/4" per foot |

### Accessories

|                              |                            |
|------------------------------|----------------------------|
| Horizontal Glazing Adaptors: | DLO - 1/16"                |
| Vertical Glazing Adaptors:   | DLO + 7/8"                 |
| Door Jambs:                  | Rough Opening - Head Joint |

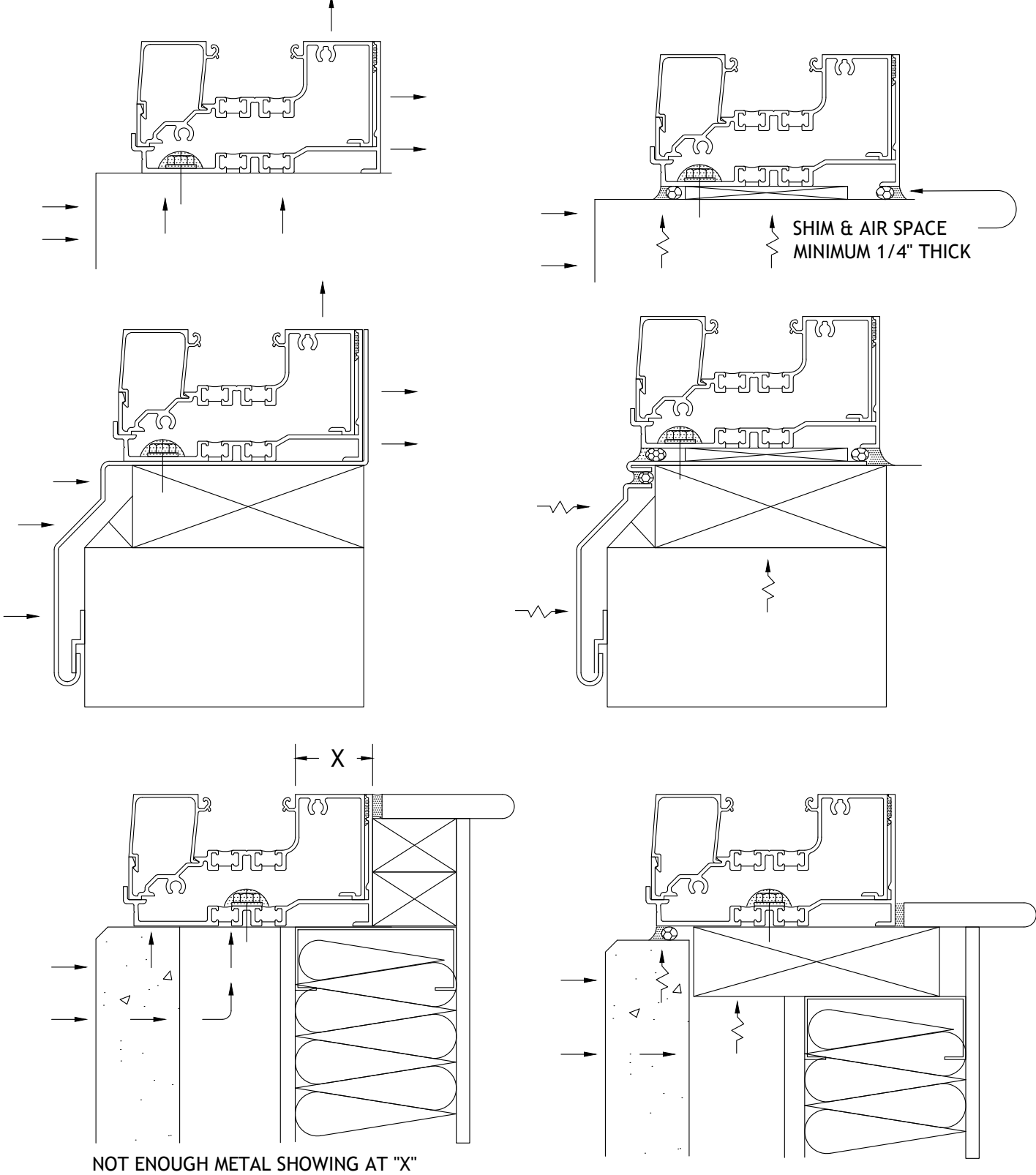


# SERIES 3000XT INSTALLATION MANUAL

## INSTALLATION FOR THERMAL PERFORMANCE

NOT RECOMMENDED

PREFERRED



TO DERIVE THE GREATEST BENEFIT FROM YOUR STOREFRONT INSTALLATION,  
WE RECOMMEND YOU REVIEW THE DETAILS ABOVE.

# SERIES 3000XT INSTALLATION MANUAL

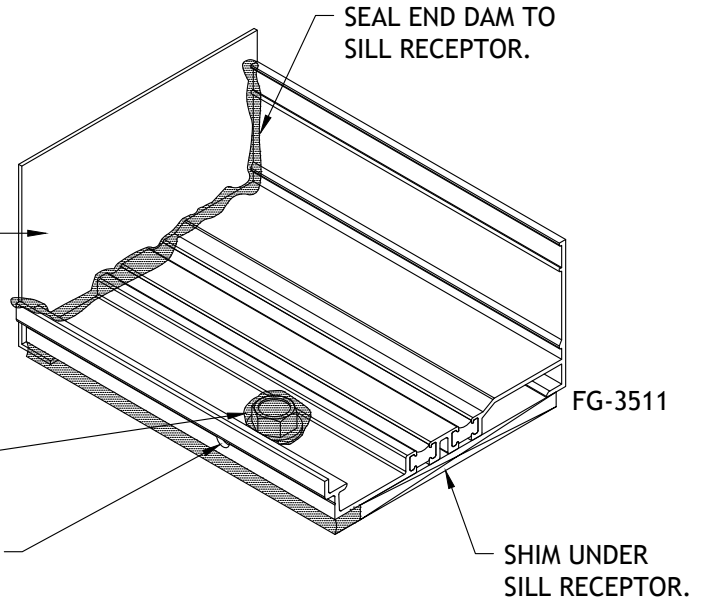
## SILL RECEPTOR INSTALLATION

### INSTALL SILL RECEPTOR AND END DAM

NOTE: IF A TWO PIECE HEAD RECEPTOR IS NOT USED, A 1/4" MINIMUM CLEARANCE IS REQUIRED AT THE HEAD CONDITION TO ALLOW FRAME INSTALLATION.

ANCHOR SILL RECEPTOR WITHIN 4" FROM EITHER SIDE OF INTERMEDIATE MULLIONS. ANCHOR SIZE AND FREQUENCY SHOULD BE DETERMINED BY STRUCTURAL REQUIREMENTS. CAP SEAL FLASHING ANCHORS AS SHOWN.

DRILL 5/16" WEEP HOLES  
LOCATE AT MID-LITE



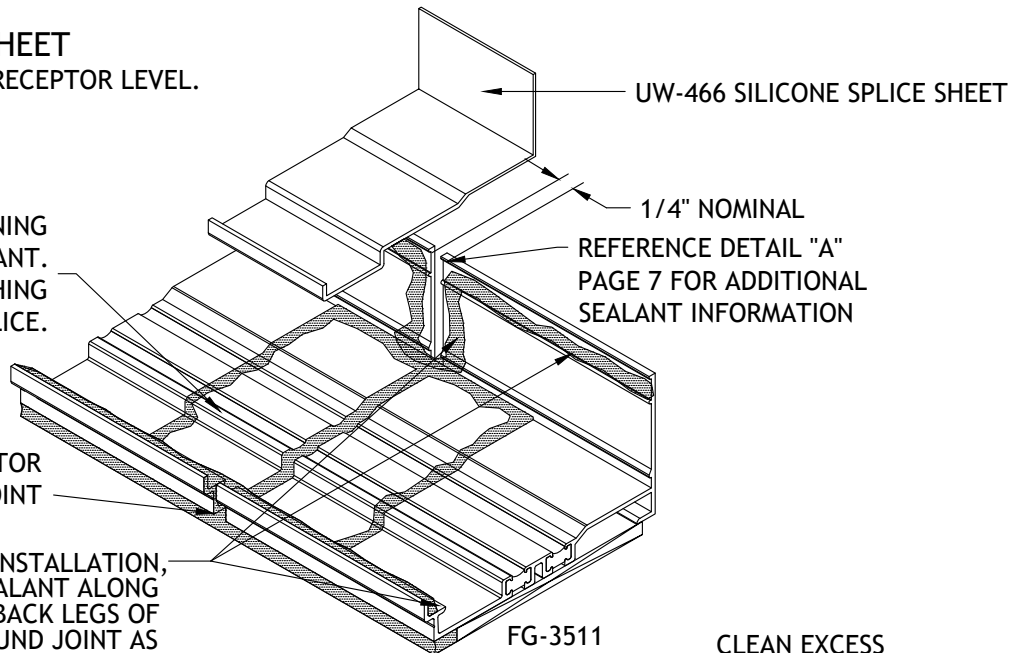
### INSTALL SPLICE SHEET

NOTE: INSTALL SILL RECEPTOR LEVEL.

SEAL WITH A NON-SKINNING  
NON-HARDENING SEALANT.  
FILL BREAK IN FLASHING  
AND UNDER SPLICE.

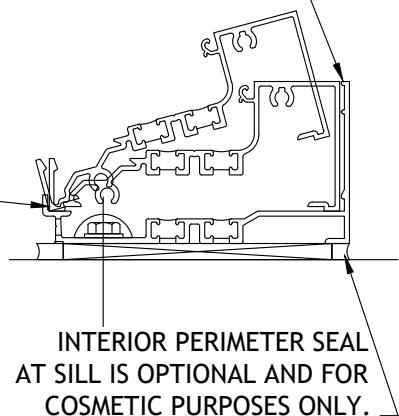
SEAL SILL RECEPTOR  
VERTICAL SPLICE JOINT

JUST PRIOR TO FRAME INSTALLATION,  
APPLY CONTINUOUS SEALANT ALONG  
GROOVE IN FRONT AND BACK LEGS OF  
SILL RECEPTOR AND AROUND JOINT AS  
SHOWN. IMMEDIATELY INSTALL FRAME  
INTO SILL.



CLEAN EXCESS  
SEALANT AWAY.

SET FRONT OF FRAME IN  
SILL RECEPTOR AND TILT  
BACK INTO PLACE.



INTERIOR PERIMETER SEAL  
AT SILL IS OPTIONAL AND FOR  
COSMETIC PURPOSES ONLY.

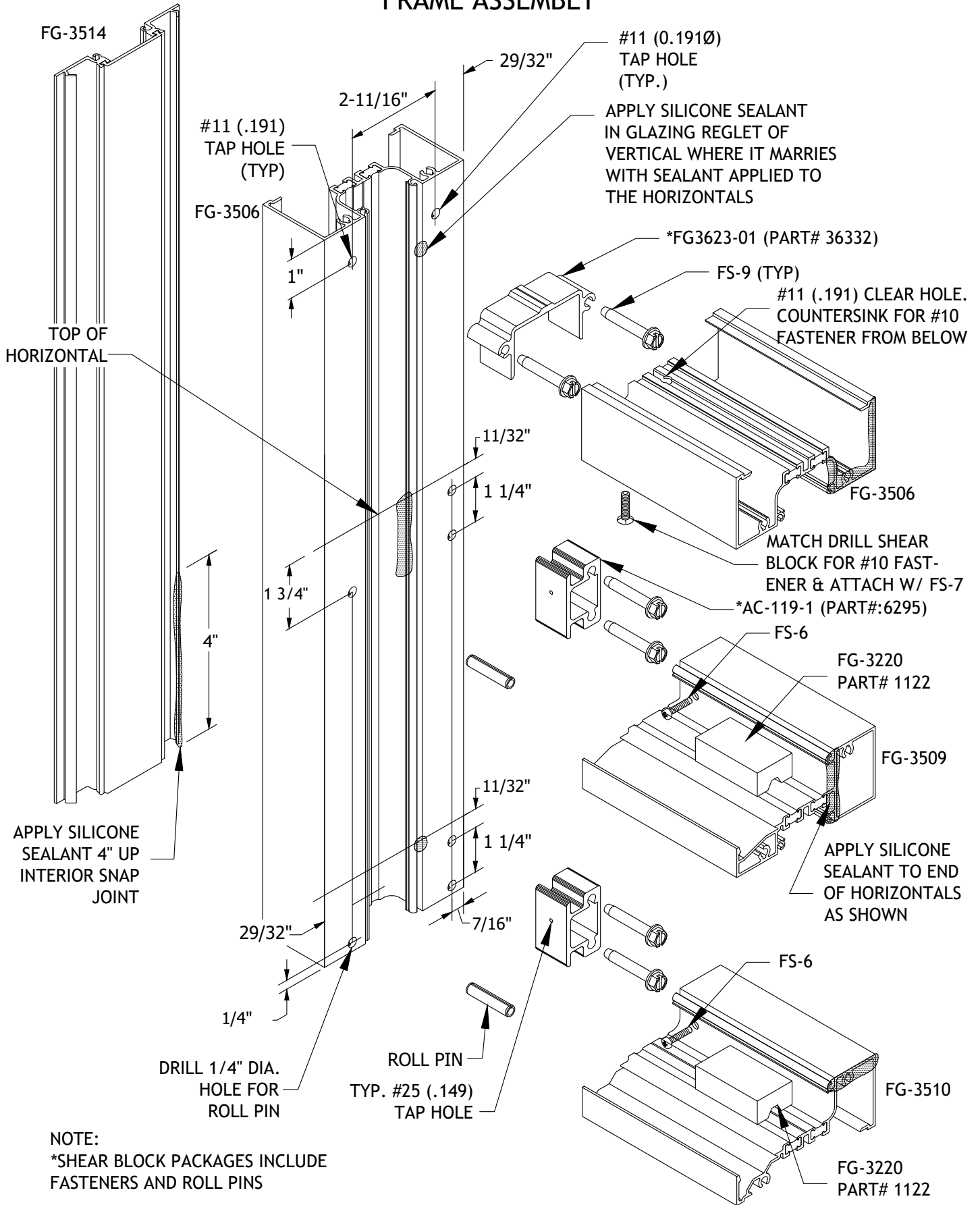
#### NOTE:

- 1) SILL RECEPTOR SHALL BE INSTALLED LEVEL AND SHOULD NEVER TILT TOWARDS INTERIOR OF BUILDING.
- 2) THE FG-3511 SILL RECEPTOR IS DESIGNED TO WITHSTAND A MAXIMUM END REACTION OF 600 LBS.
- 3) SPLICE SILL RECEPTOR AT MID-LITE.
- 4) LOCATE SPLICE JOINT AT DISTANCE OF NO MORE THAN EVERY 12 FEET.



# SERIES 3000XT INSTALLATION MANUAL

## OUTSIDE GLAZED, SHEAR BLOCK FRAME ASSEMBLY



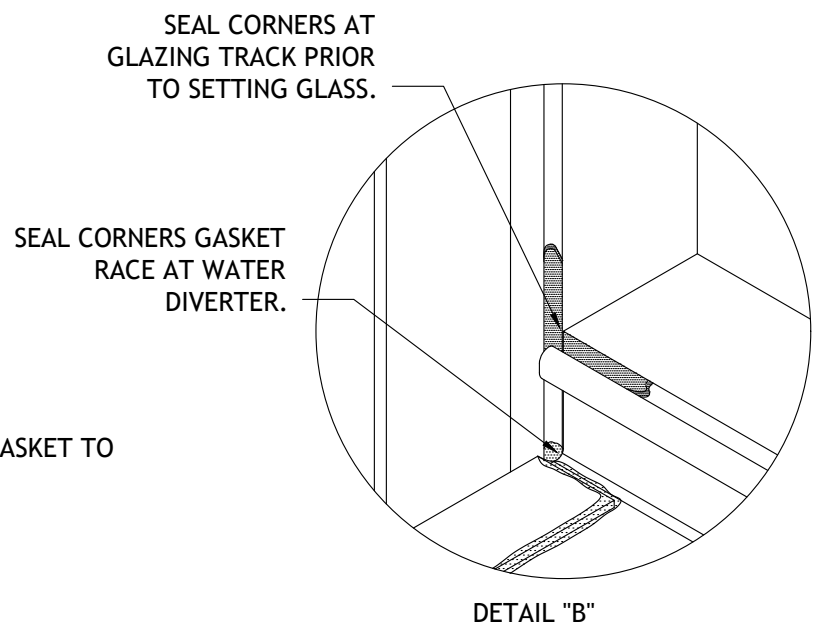
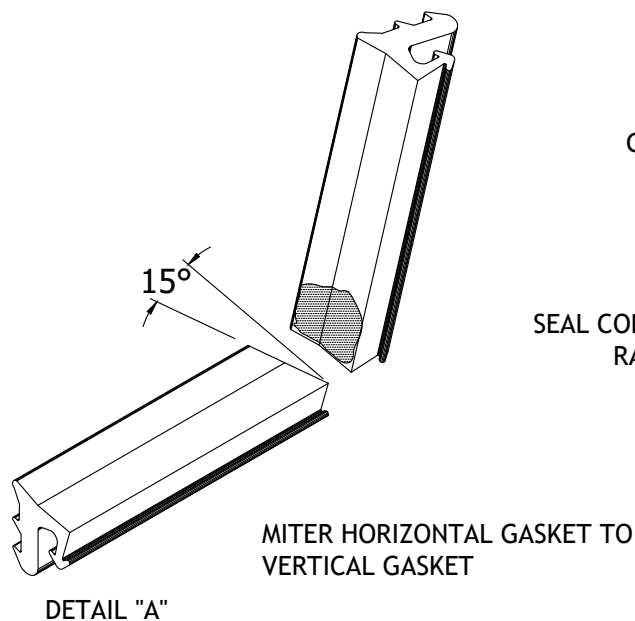
REFERENCE PAGE 17 FOR USE OF DJ-8 DRILL FIXTURE.  
April 2026

Phone: 1-866-OLDCASTLE (653-2278)  
Web: www.obe.com

# SERIES 3000XT INSTALLATION MANUAL

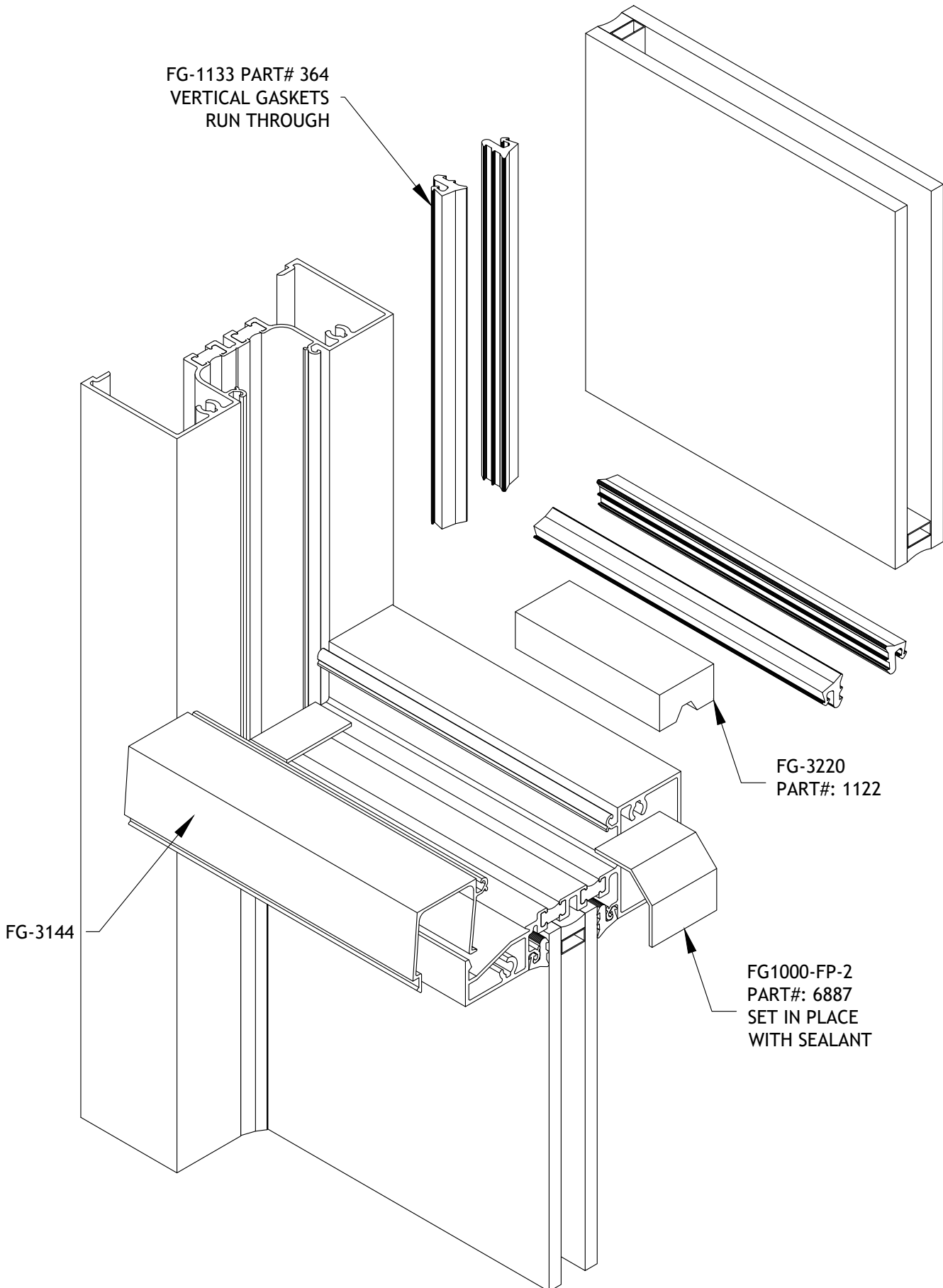
## OUTSIDE GLAZED GLAZING GUIDELINES

- 1) REMOVE GASKETS FROM ROLL AND ALLOW TO RELAX OVERNIGHT. ALL GASKETS TO BE CUT D.L.O. + 1/4" PER FOOT.
- 2) VERTICAL GASKETS RUN THRU, HORIZONTAL GASKETS SHOULD BE MITERED ON ENDS AS SHOWN IN DETAIL "A"
- 3) INSTALL INTERIOR GASKETS PRIOR TO GLAZING. CORNERS OF INTERIOR GASKETS TO BE SET IN SEALANT (DTL."B") AND CORNERS SEALED JUST PRIOR TO SETTING GLASS (DTL."A"). NOTE: CLEAN GASKETS AND SURFACES WITH ISOPROPYL ALCOHOL PRIOR TO SEALING CORNERS.
- 4) LOCATE SETTING BLOCKS AT EITHER 1/4 POINTS OR 1/8 POINTS, DEPENDENT ON SIZE OF GLASS.
- 5) GLASS IS CUT DAYLIGHT OPENING PLUS 7/8".
- 6) GLAZE OPENINGS FROM BOTTOM TO TOP. INSTALLING WATER DIVERTERS IN HORIZONTAL ABOVE, AFTER LITE BELOW IS IN POSITION.
- 7) WATER DIVERTERS (FG1000-FP-2) MUST BE LOCATED ON EACH END OF HORIZONTALS AND SET IN SEALANT.
- 8) WHEN INSTALLING GLASS: FIRST, WET TOP OF SETTING BLOCK WITH SOAPY WATER. ONCE GLASS IS SET IN PLACE, PUSH GLASS AGAINST INTERIOR GASKET AT SETTING BLOCK AREA. FAILURE TO DO SO MAY CAUSE DIAGONAL CRACKS TOWARDS SETTING BLOCKS DUE TO GLASS BENDING WHILE INSTALLING GASKET(S) IN CORNERS.



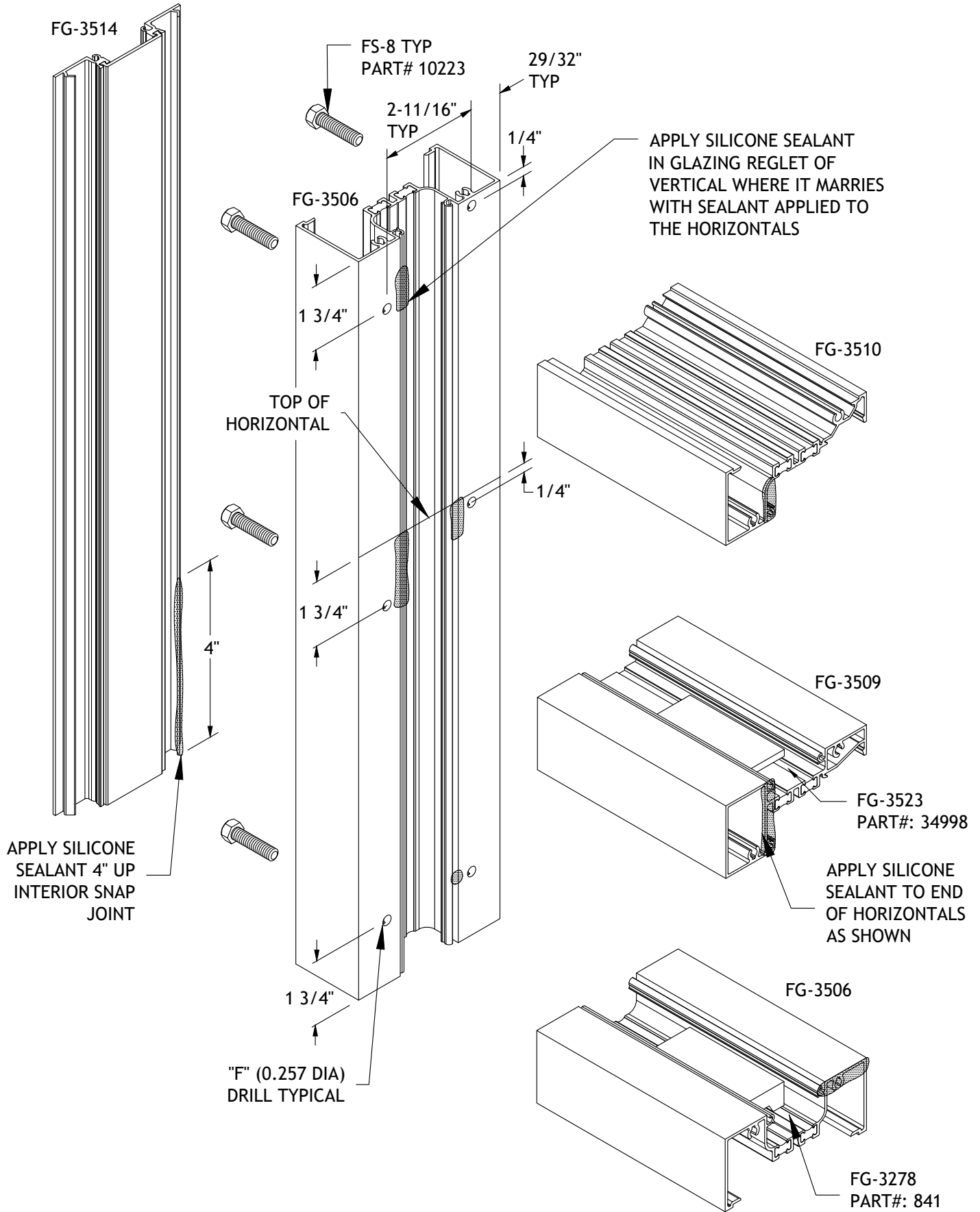
# SERIES 3000XT INSTALLATION MANUAL

## OUTSIDE GLAZED GLAZING DETAIL



# SERIES 3000XT INSTALLATION MANUAL

## INSIDE GLAZED, SCREW SPLINE FRAME ASSEMBLY

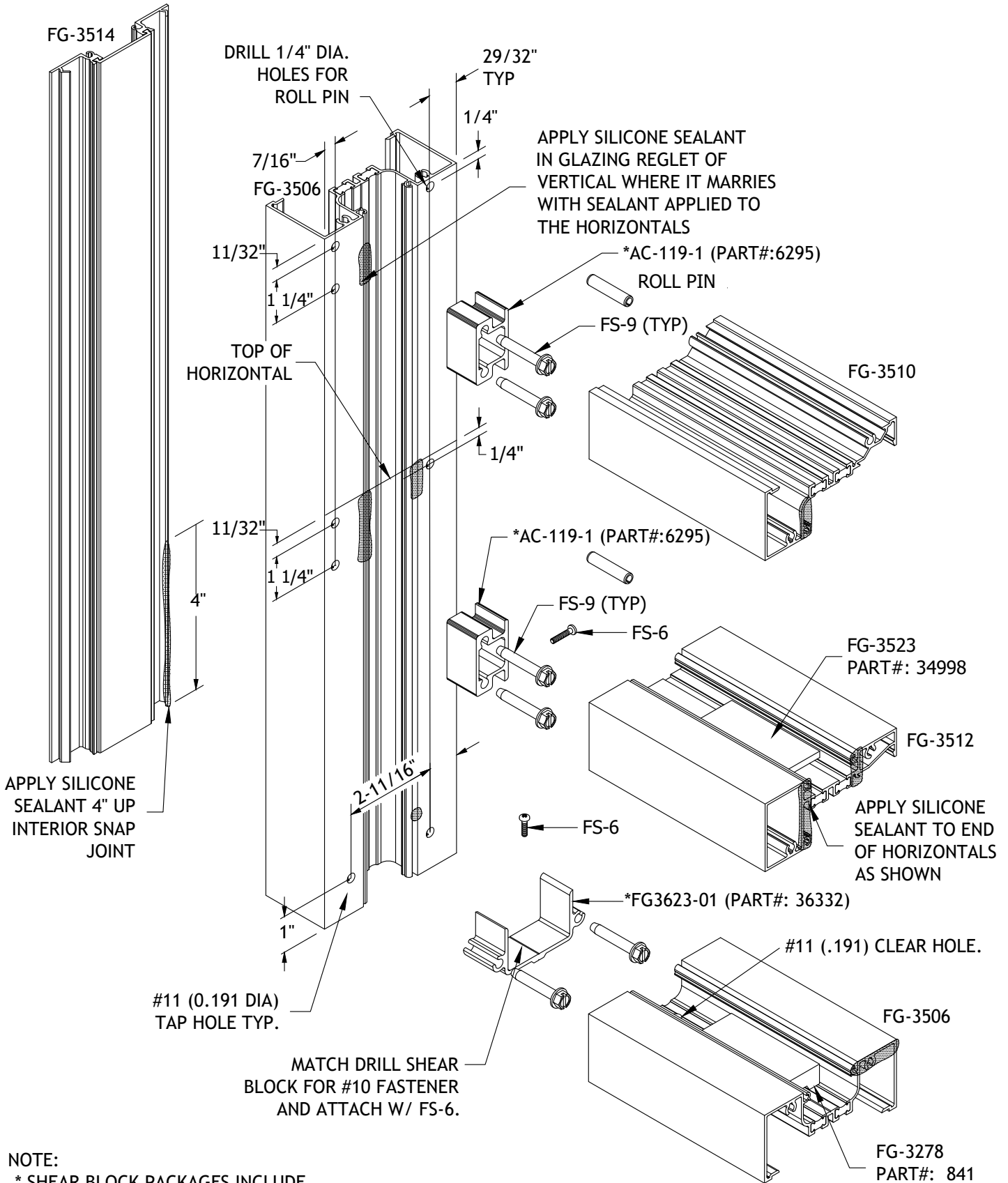


REFERENCE PAGE 18 FOR USE OF DJ-8 DRILL FIXTURE.  
 April 2026

Phone: 1-866-OLDCASTLE (653-2278)  
 Web: www.obe.com

# SERIES 3000XT INSTALLATION MANUAL

## INSIDE GLAZED, SHEAR BLOCK FRAME ASSEMBLY



**NOTE:**

\* SHEAR BLOCK PACKAGES INCLUDE FASTENERS AND ROLL PINS

REFERENCE PAGE 18 FOR USE OF DJ-8 DRILL FIXTURE.

April 2026

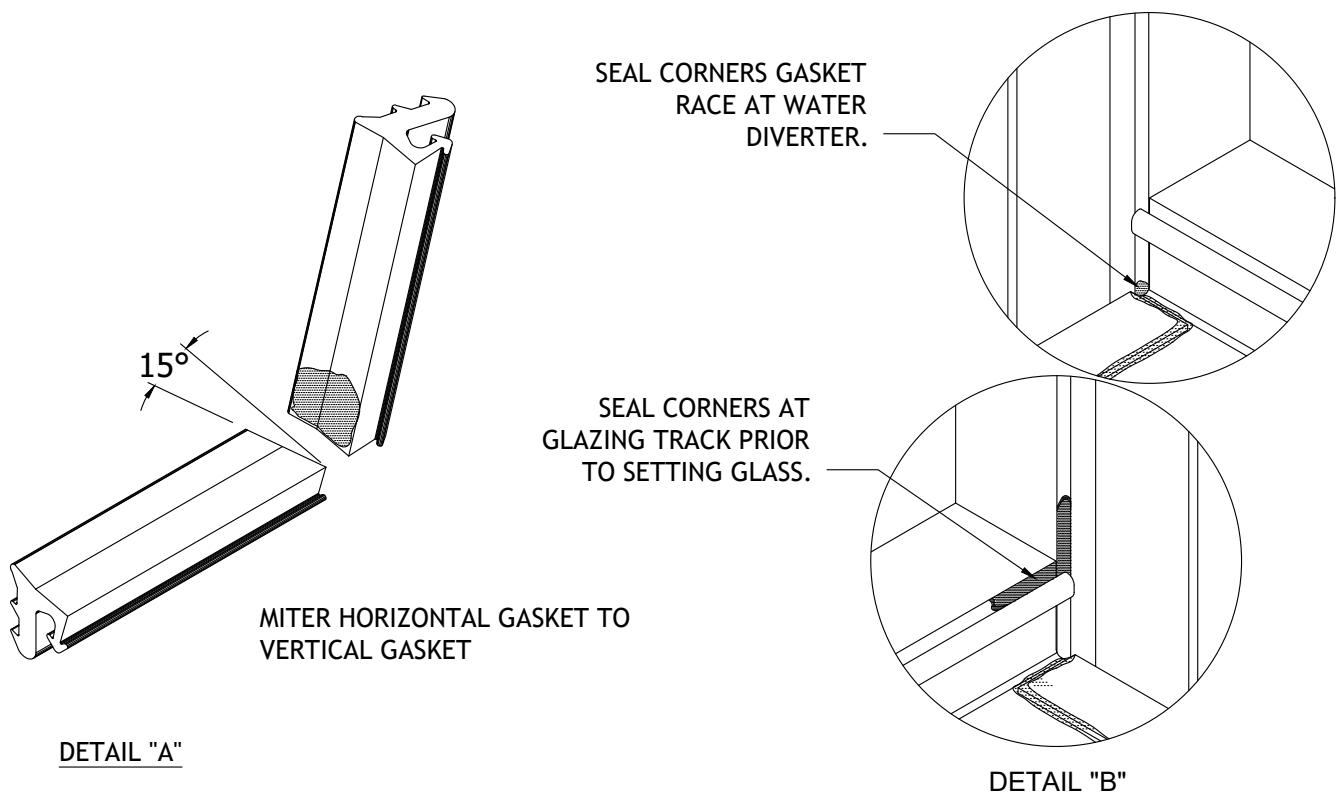
Phone: 1-866-OLDCASTLE (653-2278)

Web: www.obe.com

# SERIES 3000XT INSTALLATION MANUAL

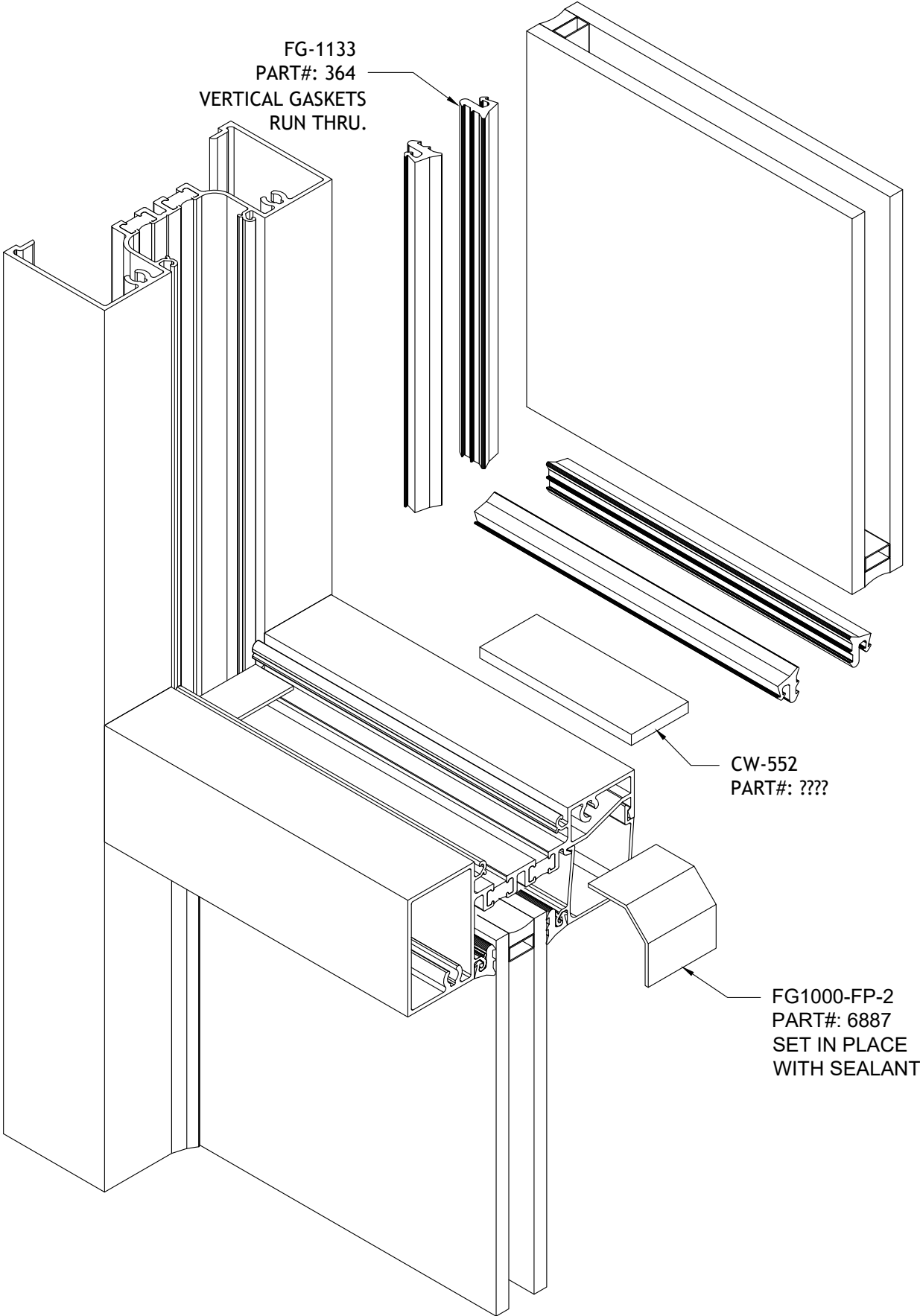
## INSIDE GLAZED GLAZING GUIDELINES

- 1) REMOVE GASKETS FROM ROLL AND ALLOW TO RELAX OVERNIGHT. ALL GASKETS TO BE CUT D.L.O. + 1/4" PER FOOT.
- 2) VERTICAL GASKETS RUN THRU, HORIZONTAL GASKETS SHOULD BE MITERED ON ENDS AS SHOWN IN DETAIL "A"
- 3) INSTALL EXTERIOR GASKETS PRIOR TO GLAZING. CORNERS OF EXTERIOR GASKETS TO BE SET IN SEALANT (DTL."B") AND CORNERS SEALED JUST PRIOR TO SETTING GLASS (DTL."A").  
NOTE: CLEAN GASKETS AND SURFACES WITH ISOPROPYL ALCOHOL PRIOR TO SEALING CORNERS.
- 4) LOCATE SETTING BLOCKS AT EITHER 1/4 POINTS OR 1/8 POINTS, DEPENDENT ON SIZE OF GLASS.
- 5) GLASS IS CUT DAYLIGHT OPENING PLUS 7/8".
- 6) GLAZE OPENINGS FROM BOTTOM TO TOP. INSTALLING WATER DIVERTERS IN HORIZONTAL ABOVE, AFTER LITE BELOW IS IN POSITION.
- 7) WATER DIVERTERS (FG1000-FP-4&5) MUST BE LOCATED ON EACH END OF HORIZONTALS AND SET IN SEALANT.
- 8) WHEN INSTALLING GLASS: FIRST, WET TOP OF SETTING BLOCK WITH SOAPY WATER. ONCE GLASS IS SET IN PLACE, PUSH GLASS AGAINST GASKET AT SETTING BLOCK AREA. FAILURE TO DO SO MAY CAUSE DIAGONAL CRACKS TOWARDS SETTING BLOCKS DUE TO GLASS BENDING WHILE INSTALLING GASKET(S) IN CORNERS.



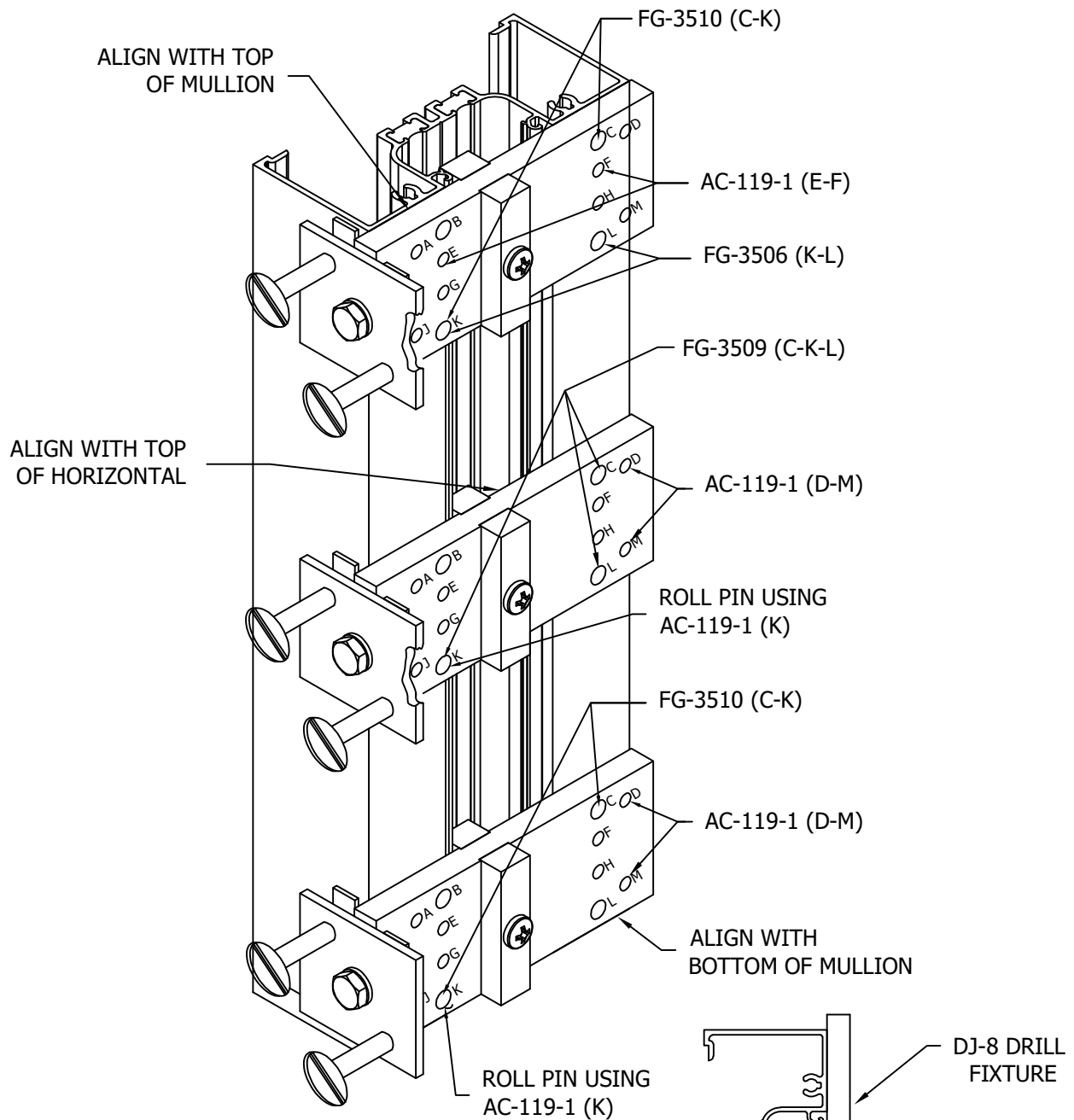
# SERIES 3000XT INSTALLATION MANUAL

## INSIDE GLAZED GLAZING DETAIL



# SERIES 3000XT INSTALLATION MANUAL

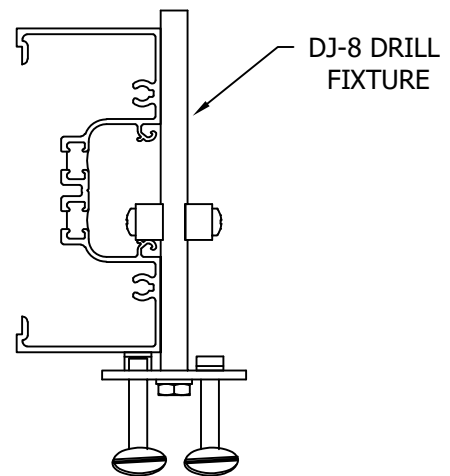
## OUTSIDE GLAZED FABRICATION USING DRILL FIXTURE



REFERENCE FRONT SET ASSEMBLY DRAWINGS FOR ADDITIONAL INFORMATION, SEALANT APPLICATION AND EXTRUSIONS.

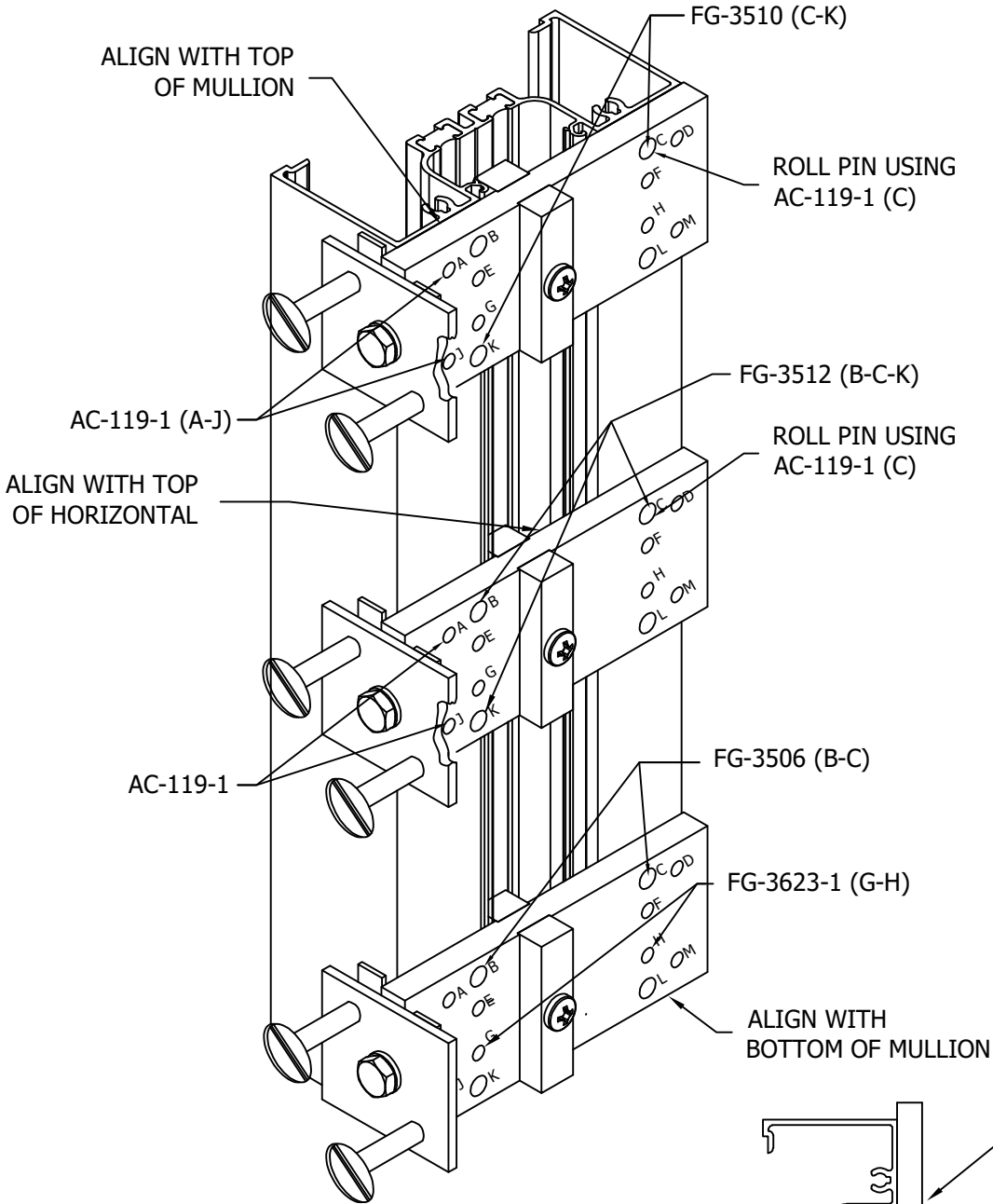
**NOTES:**

- 1) DRILL HOLES FOR SCREWSPLINES USING A "F" (.257 Ø) DRILL
- 2) DRILL HOLES FOR ROLL PINS USING A "F" (.257 Ø) DRILL
- 3) DRILL HOLES FOR SHEAR BLOCKS USING #11 (.191Ø) DRILL



# SERIES 3000XT INSTALLATION MANUAL

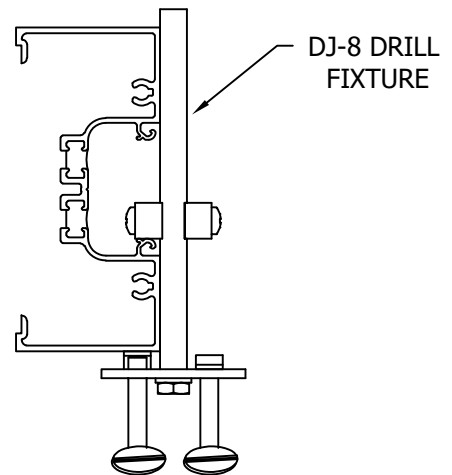
## INSIDE GLAZED FABRICATION USING DRILL FIXTURE



REFERENCE FRONT SET ASSEMBLY DRAWINGS FOR ADDITIONAL INFORMATION, SEALANT APPLICATION AND EXTRUSIONS.

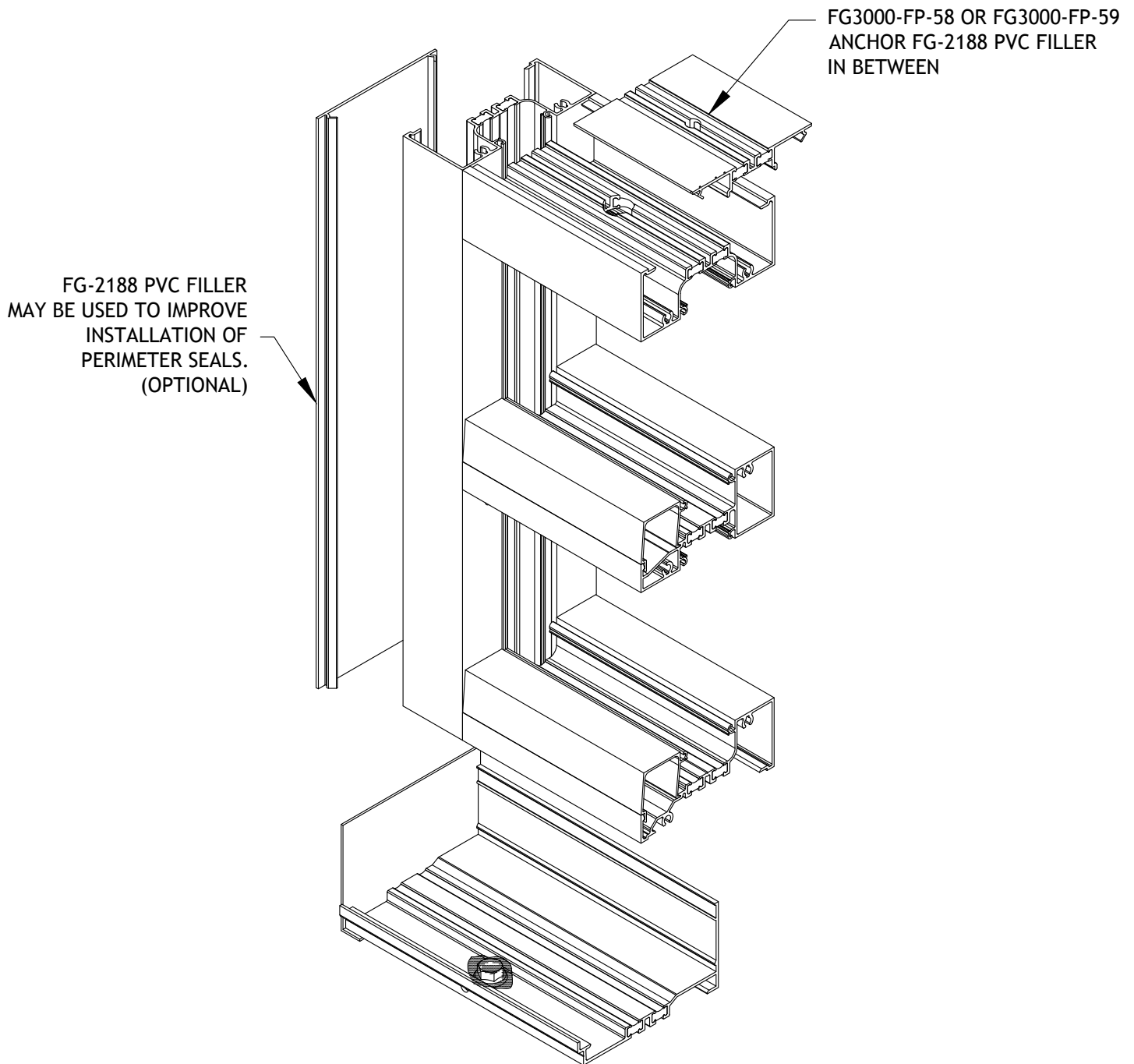
**NOTES:**

- 1) DRILL HOLES FOR SCREWSPLINES USING A "F" (.257 Ø) DRILL
- 2) DRILL HOLES FOR ROLL PINS USING A "F" (.257 Ø) DRILL
- 3) DRILL HOLES FOR SHEAR BLOCKS USING #11 (.191Ø) DRILL



# SERIES 3000XT INSTALLATION MANUAL

## FRAME INSTALLATION

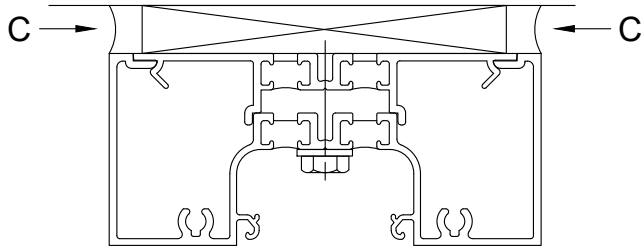


### NOTES:

- 1) WHEN USING OPTIONAL FG-3511 SILL RECEPTOR, SILL ANCHORS ARE NOT REQUIRED.
- 2) MAXIMUM END REACTION AT MULLION WHEN USING FG-3511 SILL RECEPTOR IS 600 LBS.
- 3) HEAD ANCHORS SHOULD BE LOCATED SO THAT THE ANCHOR IS NOT MORE THAN 4" AWAY FROM EACH SIDE OF MULLION.
- 4) ASSEMBLY WITHOUT FLASHING IS NOT RECOMMENDED.
- 5) ASSEMBLY USING A NON-THERMAL OR SHEET METAL FLASHING WILL RESULT IN LOSS OF THERMAL CONTINUITY AND IS NOT RECOMMENDED.

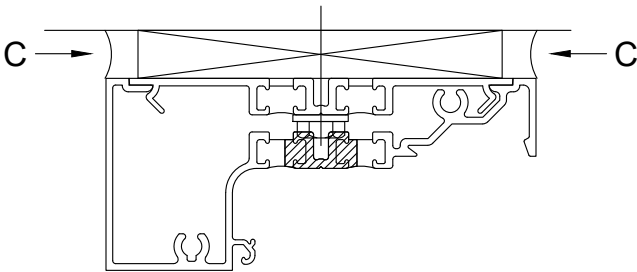
# SERIES 3000XT INSTALLATION MANUAL

## ANCHORAGE AND PERIMETER SEAL

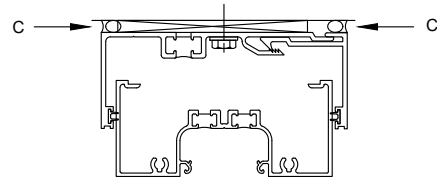


FG-3506 HEAD WITH FG3000-FP-58 ANCHOR

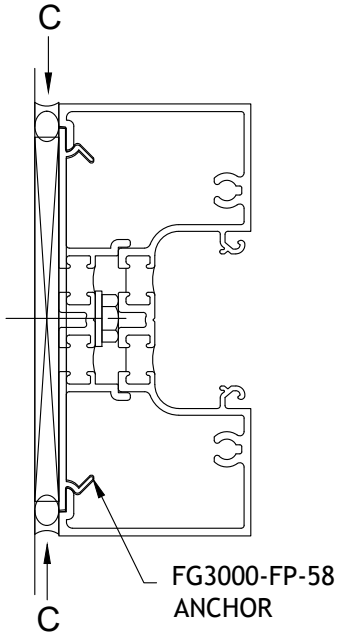
FG3000-FP-58 AND FG3000-FP-59 ANCHORS ARE DESIGNED TO CARRY A MAXIMUM END REACTION OF 600LBS.



FG-3510 HEAD WITH FG3000-FP-59 ANCHOR



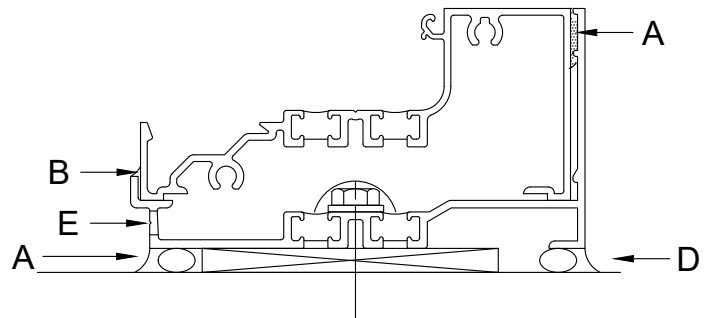
OPTIONAL MO-678/MO-244 HEAD RECEPTOR  
MAXIMUM END REACTION OF 450 LBS.



APPLY SEALANT ALONG LENGTH OF SILL FLASHING AT POINT (A).

APPLY FILLET SEAL BETWEEN SILL FLASHING AND FRONT OF SILL (B).

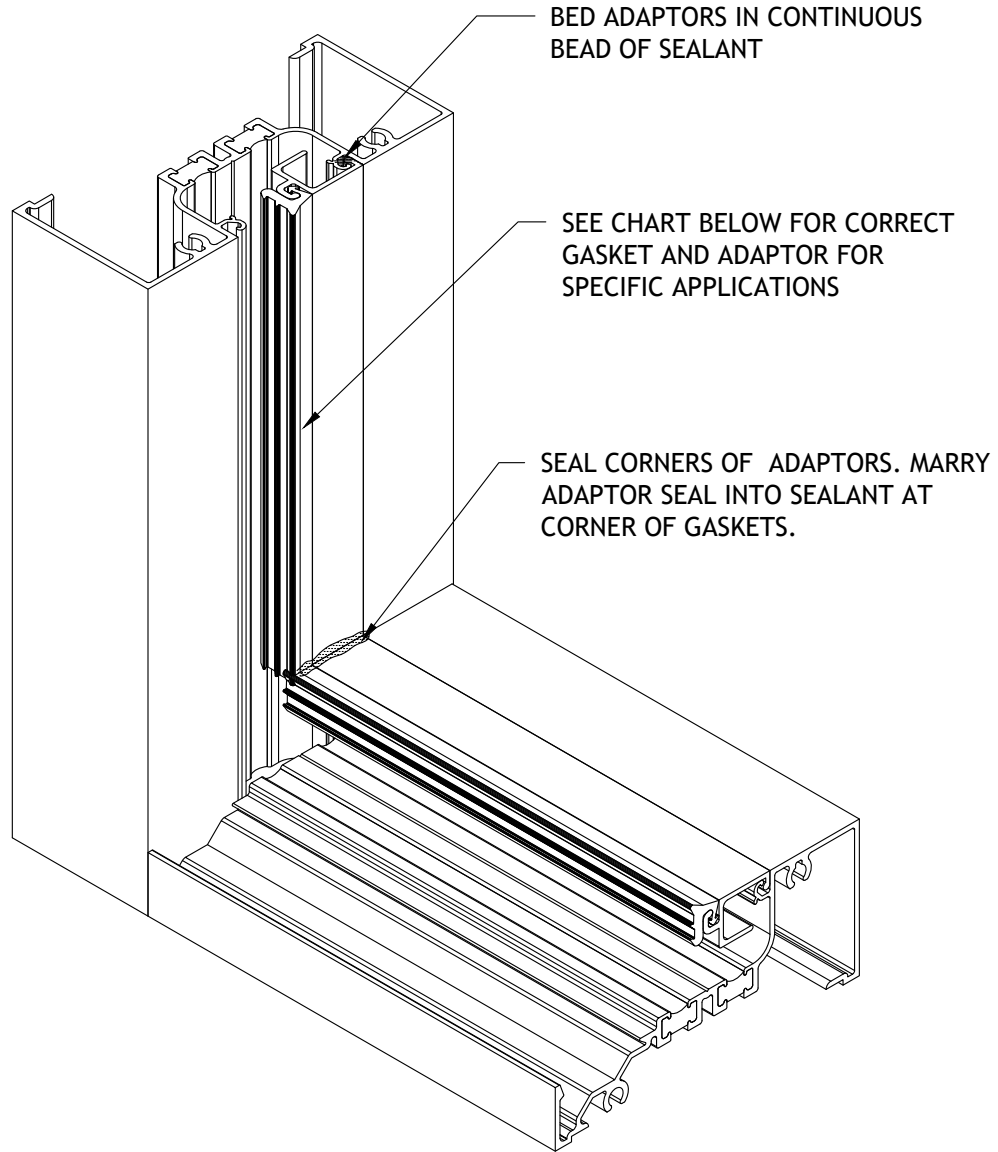
THE QUALITY OF THE INSIDE AND OUTSIDE PERIMETER SEALS (C) MAY BE IMPROVED BY USING FG-2188 RIGID PVC FILLER. THE PART MAY BE USED IN FULL LENGTHS OR CUT INTO PIECES. ITS PURPOSE IS TO PROVIDE SUPPORT FOR THE BACKER ROD REGARDLESS OF JOINT SIZE. INTERIOR PERIMETER SEAL AT SILL (D) IS OPTIONAL AND FOR COSMETIC PURPOSES ONLY.



NOTE: 1/4" WEEP HOLES REQUIRED IN FLASHING (E) AT CENTERLINE OF D.L.O.

# SERIES 3000XT INSTALLATION MANUAL

## GLAZING ADAPTOR INSTALLATION



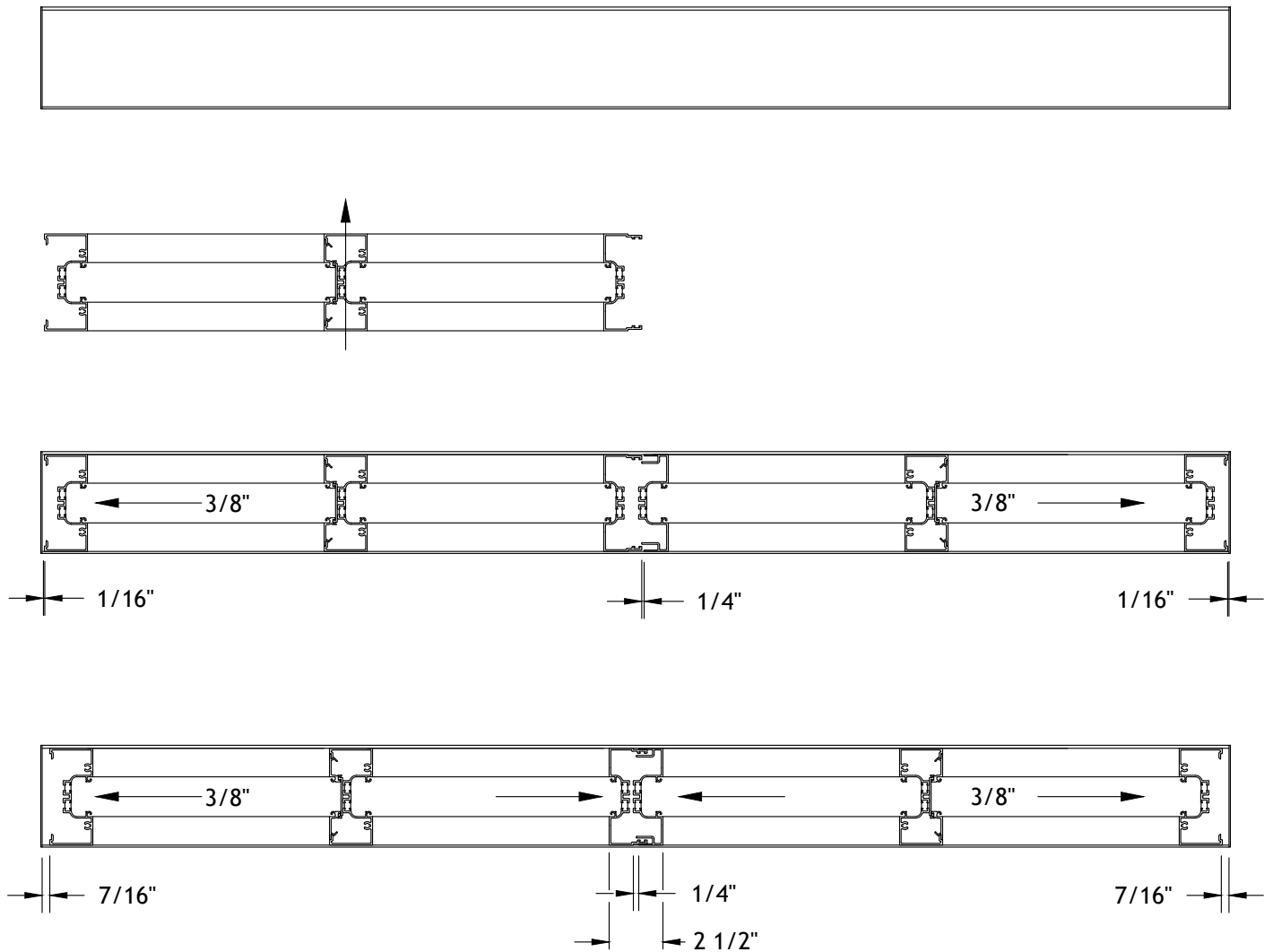
**NOTE:**  
ADAPTORS SHOULD BE INSTALLED ON INTERIOR  
SIDE OF ALL GLAZING OPTIONS.

| GLASS | ADAPTOR | GASKETS            | GLASS   | ADAPTOR | GASKETS            |
|-------|---------|--------------------|---------|---------|--------------------|
| 1/4"  | FG-3194 | FG-1133 Both Sides | 11/16"  | FG-3237 | FG-1133 & FG-1134  |
| 5/16" | FG-3236 | FG-5125 Both Sides | 3/4"    | FG-3237 | FG-1134 Both Sides |
| 3/8"  | FG-3236 | FG-1133 & FG-5125  | 13/16"  | N/A     | Not Available      |
| 7/16" | FG-3236 | FG-1133 Both Sides | 7/8"    | None    | FG-5125 Both Sides |
| 1/2"  | FG-3237 | FG-5125 Both Sides | 15/16"  | None    | FG-1133 & FG-5125  |
| 9/16" | FG-3237 | FG-1133 & FG-5125  | 1"      | None    | FG-1133 Both Sides |
| 5/8"  | FG-3237 | FG-1133 Both Sides | 1 1/16" | None    | FG-1133 & FG-1134  |
| 5/8"  | NONE    | FG-3129 Both Sides | 1 1/8"  | None    | FG-1134 Both Sides |

# SERIES 3000XT INSTALLATION MANUAL

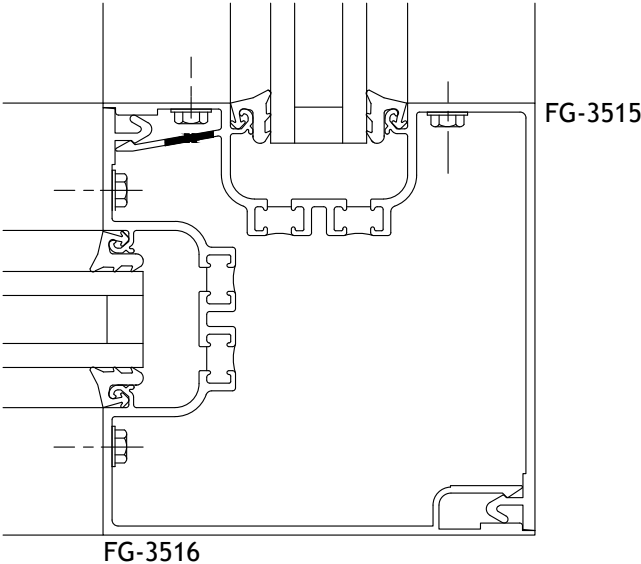
## EXPANSION MULLION INSTALLATION

MULTIPLE UNITS MAY REQUIRE THE USE OF AN EXPANSION MULLION IF THE TOTAL WIDTH OF THE OPENING EXCEEDS 24 FEET. IN THESE CASES, LOCATE EXPANSION MULLIONS NO GREATER THAN 20 FEET ON CENTER. LOCATE SPLICE IN SILL RECEPTOR NO MORE THAN 12 FEET ON CENTER. A MINIMUM OF 7/16" CLEARANCE BETWEEN THE JAMB AND THE SILL RECEPTOR END DAM MUST BE PROVIDED TO ALLOW FOR FRAME INSTALLATION WHEN USING EXPANSION MULLIONS. THIS WILL ALLOW THE MINIMUM 3/8" CLEARANCE NEEDED FOR THE NEXT FRAME ASSEMBLY TO BE ROTATED INTO POSITION AND INTERLOCKED WITH THE FRAME ASSEMBLY ALREADY INSTALLED. ONCE IN POSITION, UNITS SHOULD BE CENTERED INTO THE OPENING TO PROVIDE EQUAL CLEARANCE AT THE JAMBS. OLDCASTLE BUILDINGENVELOPE RECOMMENDS THE USE OF THE FG-2188 FILLER IN THE HEAD AND JAMBS TO IMPROVE THE PERIMETER SEAL.

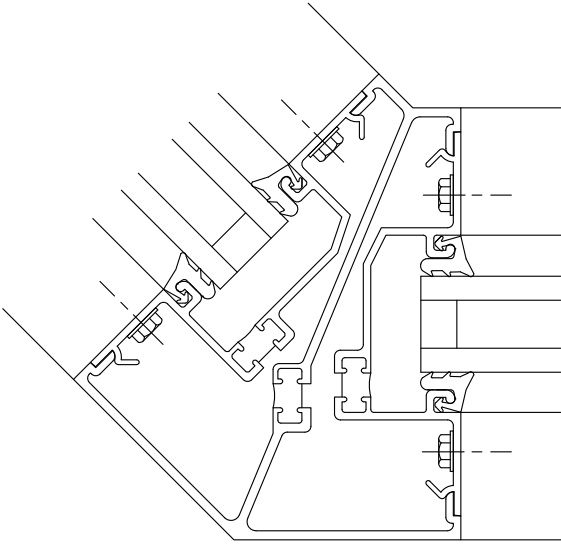


# SERIES 3000XT INSTALLATION MANUAL

## CORNER INSTALLATION



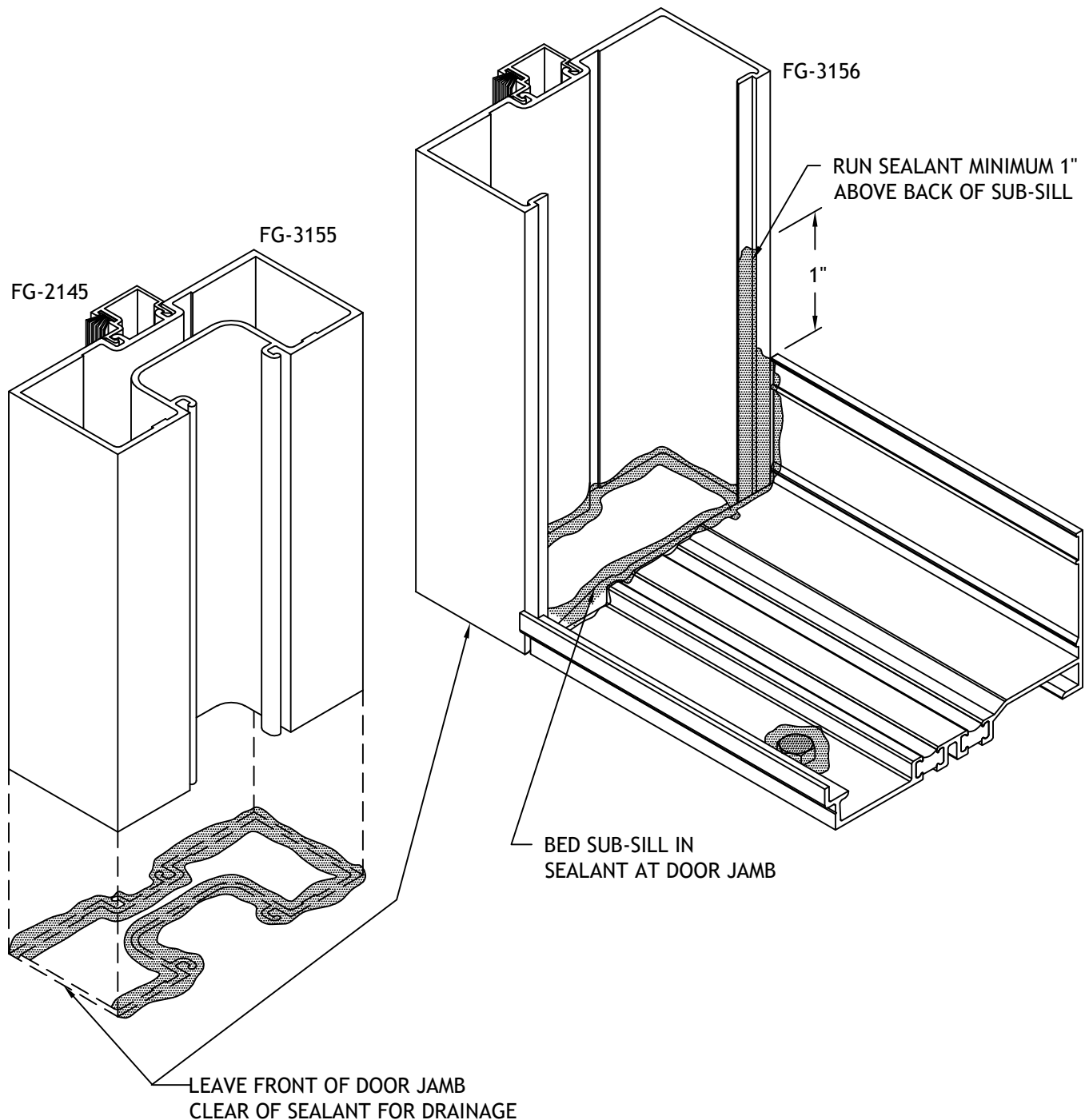
INSIDE OR OUTSIDE 90 DEGREE CORNER



INSIDE OR OUTSIDE 135 DEGREE CORNER

# SERIES 3000XT INSTALLATION MANUAL

## DOOR FRAME INSTALLATION









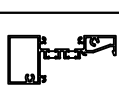
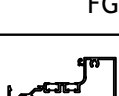
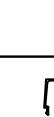
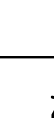
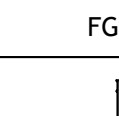
### NOTES:

- 1) USE SHEAR BLOCKS AS SHOWN IN FRAME ASSEMBLY SECTION OF THIS MANUAL TO SECURE HORIZONTALS TO TUBULAR FRAMES.
- 2) DOOR FRAME IS ANCHORED BY FASTENERS THROUGH THRESHOLD AND DOOR FRAME HEADER.
- 3) DO NOT FABRICATE STANDARD 2 PIECE POUR & DEBRIDGED FRAME EXTRUSIONS FOR DOOR FRAMES. IF THERMAL FRAME IS REQUIRED, OPTIONAL THERMAL DOOR FRAME FG-3575 MAY BE USED IN CONJUNCTION WITH OLDCASTLE BUILDINGENVELOPE THERMAL DOORS.
- 4) WHEN USING THE CENTER SET SYSTEM, THE TWO-PIECE OR TUBULAR FRAMING OPTION ARE AVAILABLE AS SHOWN ABOVE. WHEN USING EITHER THE FRONT SET OR BACK SET SYSTEM ONLY THE TUBULAR OPTION IS AVAILABLE. THE VERTICAL FOR THE FRONT OR BACK SET OPTIONS IS FG-3287.

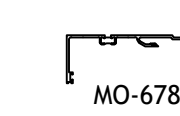

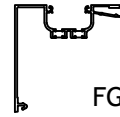
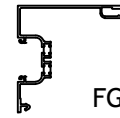
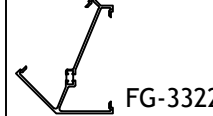


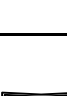
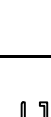
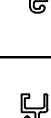
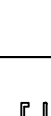
# SERIES 3000XT INSTALLATION MANUAL

## PARTS LIST

### SERIES 3000XT

|   |         |  |
|---|---------|--|
|    | FG-3506 | Open Back<br>Head / Jamb / Mullion           |
|    | FG-3517 | Open Back<br>Heavy Mullion                   |
|    | FG-3520 | Expansion<br>Mullion<br>(mates w/ FG-3519)   |
|    | FG-3519 | Expansion<br>Mullion<br>(mates w/ FG-3520)   |
|    | FG-3514 | Open Back<br>Filler                          |
|   | FG-3509 | Outside Glazed<br>Intermediate<br>Horizontal |
|  | FG-3512 | Inside Glazed<br>Intermediate<br>Horizontal  |
|  | FG-3510 | Sill   |
|  | FG-3144 | Glass Stop<br>for Outside Glazing            |
|  | FG-3210 | Heavy Glass Stop<br>for Inside Glazing       |
|  | FG-3511 | Sill Receptor                                |



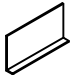
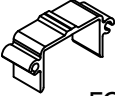

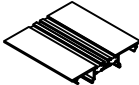
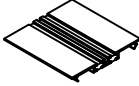
### SERIES 3000XT AUXILIARY EXTRUSIONS

|  |         |  |
|--|---------|--|
|    | MO-678  | Head Receptor  |
|     | MO-244  | Receptor Face  |
|    | FG-3515 | Center Set<br>90° Corner                                     |
|    | FG-3516 | Center Set<br>90° Corner<br>(Self-Mating 180°)               |
|    | FG-3322 | Center Set 135° Corner                                       |
|    | FG-3321 | Center Set 135°<br>Corner Filler<br>(2 per corner)           |
|  | FG-2188 | Vinyl Filler<br>for Caulk Stop<br>12' lg.                    |
|   | FG-3218 | Vinyl Pocket Filler<br>for Window<br>Applications<br>12' lg. |
|   | FG-3194 | Glazing Adaptor for<br>1/4" glass                            |
|   | FG-3237 | Glazing Adaptor for<br>1/2", 9/16", 5/8",<br>11/16" & 3/4"   |
|   | FG-3236 | Glazing Adaptor for<br>5/16", 3/8" & 7/16"                   |





# SERIES 3000XT INSTALLATION MANUAL

## PARTS LIST

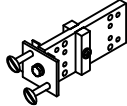







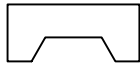
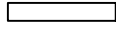


### SERIES 3000XT ACCESSORIES

|   |   |
|---|---|
| <br>FG1000-FP-2                          | Water Diverter  |
| <br>UW-466 | 2" Wide Silicone Sheet<br>for splicing of sill<br>receptors |
| <br>FG3000-FP-46                         | End Dam for<br>FG-3511                                      |
| <br>FG3623-01                            | Shear Block for<br>FG-3506                                  |
| <br>AC-119-1                             | Shear Block for<br>FG-3509, FG-3512<br>& FG-3510            |
| <br>FG3000-FP-58                         | Head Anchor for<br>FG-3506                                  |
| <br>FG3000-FP-59                       | Head Anchor for<br>FG-3510                                  |

### SERIES 3000XT ACCESSORIES FASTENERS

|   |  |
|---|--|
| <br>FS-6             | #10 X 3/4" PPH B PT<br>Shear Block<br>Attachment Screw               |
| <br>FS-8                  | 1/4 X 1" H.H.S.T.S.<br>Screw Spline<br>Assembly Screw                |
| <br>FS-9                 | 1/4 X 1-1/2" H.H.S.T.S.<br>Shear Block<br>Attachment Screw           |
| <br>FS-55 | #10 x 1/2" P.R.H.<br>Attachment of<br>Shear Blocks at<br>Horizontals |

### SERIES 3000XT ACCESSORIES DRILL JIGS, GASKETS & SETTING BLOCKS

|  |   |
|--|---|
| <br>DJ-8                         | Drill Fixture for<br>Center Set<br>Shear Block or<br>Screwspline Assembly |
| <br>FG-1133 | 1" Glazing<br>Gasket  |
| <br>FG-1134                       | Light Gasket  |
| <br>FG-3129 | 5/8" Glazing<br>Gasket  |
| <br>FG-5125                       | Heavy Gasket  |
| <br>CW-998                       | Gasket for<br>Expansion Mullions  |
| <br>V-11                       | Gasket for<br>Head Receptor   |
| <br>FG-3220                    | Setting Block<br>for FG-3509 horizontal<br>and FG-3510 sill               |
| <br>FG-3278                    | Setting Block<br>for FG-3512  |
| <br>FG-3523                    | Setting Block<br>for FG-3293, FG-3294<br>& FG-3334                        |
| <br>GP-152                     | Side Block<br>for Deep Pocket   |
| <br>GP-154                      | Side Block<br>for Shallow Pocket  |