

MOUNTING INSTRUCTIONS:

1. PREPARE DOOR, HEADER AND THRESHOLD PER DWG. 10-950-2 OPPOSITE SIDE OF THIS PG. AND TEMPLATE 10-992
2. INSTALL ROD & CASE ASS'Y WITH TOP LATCH CASE INTO ACTIVE STILE. SECURE ROD & CASE ASS'Y WITH 2 EA. 1/4-20 SHOULDER BOLTS. NOTE: DO NOT SECURE TOP LATCH CASE TO STILE AT THIS TIME.
3. INSTALL BOTTOM STRIKE PLATE ON THRESHOLD WITH 2 EA. #8x3/4(19) SELF TAPPING SCREWS.
4. INSTALL 1 EA. 1/4-20 SHOULDER BOLT ON INACTIVE STILE. (IF LOCK CYL. IS NOT BEING USED SKIP NOTE #5.)
5. INSERT LOCK CYLINDER INTO LOCK MTG. PAD AND SECURE WITH LOCK RING. POSITION LOCK CYLINDER MTG. PAD ON OUTSIDE (LOCKSIDE) OF ACTIVE STILE & SECURE WITH 2 EA. 8-32x1-15/16(49) FHMS. IF TRIM IS BEING USED FOLLOW INSTRUCTION GUIDE 10-990 WITH TRIM.
6. UN-DOG PANIC DEVICE PER INSTRUCTIONS ON ACTIVE PAD
7. PLACE ACTUATOR LINK ONTO LEVER PINS (REF. DETAIL "A").
8. BEING SURE THERE IS A POSITIVE ENGAGEMENT OVER EA. END OF GROOV-PIN. INSTALL PANIC DEVICE ON STILES ASSURING ACTUATOR LINK ENGAGES ACTUATOR PIN AS SHOWN PER DETAIL "A". TIGHTEN (2) SET SCREWS ON ACTIVE PAD (1) EA. ON INACTIVE PAD.

ADJUSTMENTS:

1. **TOP LATCH:** PANIC MUST BE IN THE DOGGED POS. TO COMPLETE THE FOLLOWING ADJUSTMENTS.
2. POSITION TOP LATCH INTO THE OPEN POS. PER DETAIL "B" & ROTATE TOP LATCH CASE UNTIL MTG. HOLES ON LATCH CASE ARE OFF-CENTER TO C'SUNK HOLES ON ACTIVE STILE AS SHOWN PER DETAIL "D". SECURE CASE WITH (2) EA. 10-32x1/4(6) FHMS.

BOTTOM BOLT ADJUSTMENT:

1. WITH PANIC UN-DOGGED FULL DEPRESS TOUCH BAR, BOTTOM ROD WILL RETRACT & LATCH WILL ROTATE TO THE UNLOCKED POS. PER DETAIL "B". WITH LATCH IN THIS POS. ADJUST BOTTOM BOLT PER DETAIL "Z".
2. INSTALL BOLT GUIDE & SECURE WITH (2) EA. #10 SELF TAPPING SCREWS.

MANUAL CHECK:

- UN-DOG PANIC DEVICE, MANUALLY POSITION TOP LATCH TO THE LOCKED OR CAPTURED POS. PER DETAIL "B-1"(BOTTOM BOLT WILL THEN EXTEND.)

OPERATIONS CHECK:

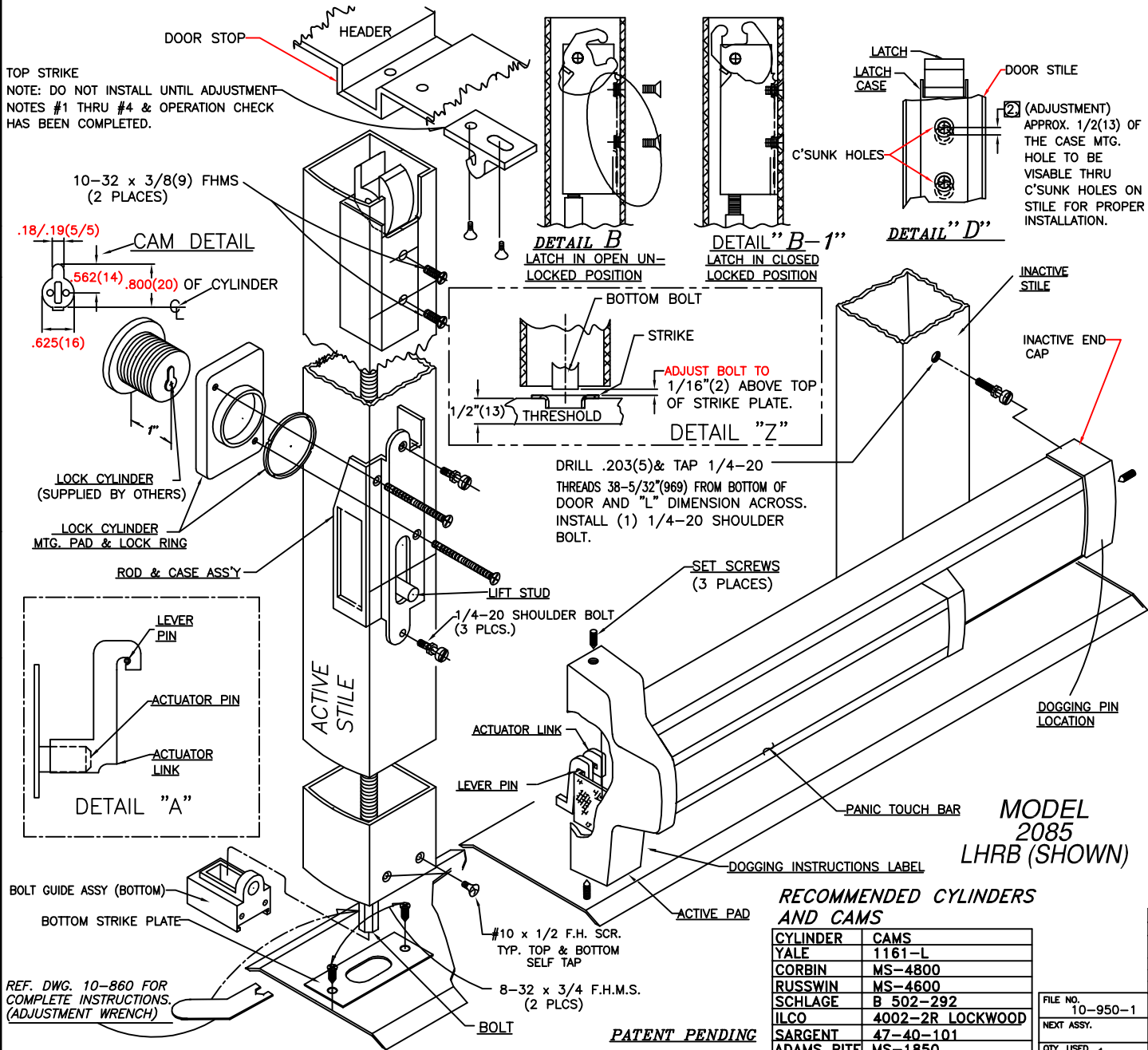
- DEPRESS PANIC TOUCH BAR FULLY, BOTTOM BOLT SHOULD RETRACT TO BTM. EDGE OF DOOR STILE, TOP LATCH WILL WIND UP IN THE OPEN POSITION (DETAIL "B").

- ** IMPORTANT:** IF TOP LATCH POSITIONS ITSELF TO THE OPEN POS. WITH TOUCH BAR ONLY BEING PARTIALLY DEPRESSED, OR IF TOP LATCH DOES NOT GO TO THE OPEN POS. WHEN TOUCH BAR IS FULLY DEPRESSED, REDOG PANIC & REPEAT STEPS 1 THRU 3 IF TOP LATCH IS RE-ADJUSTED BTM. BOLT MUST BE RE-ADJUSTED PER DETAIL "Z" AS WELL.

2. WHEN SYTEM WORKS PROPERLY, INSTALL TOP STRIKE WITH OVAL C'SUNK HOLES TOWARDS DOOR STOP.

DOGGING INSTRUCTIONS:

1. TO DOG: DEPRESS TOUCH BAR, PUSH DOGGING UP UNTIL IT STOPS. TO UN-DOG: PUSH DOGGING PIN UP, THE RELEASE.



RECOMMENDED CYLINDERS AND CAMS

CYLINDER	CAMS
YALE	1161-L
CORBIN	MS-4800
RUSSWIN	MS-4600
SCHLAGE	B 502-292
ILCO	4002-2R LOCKWOOD
SARGENT	47-40-101
ADAMS RITE	MS-1850

FILE NO. 10-950-1
NEXT ASSY.
QTY. USED 1

C 06/06/00 ADD NOTE FOR OUTSIDE TRIM		ECN1384	RM
B 12/14/99 REF. SHIT 2 OF 2		ECN1327	RM
DIMENSIONAL TOLERANCES UNLESS OTHERWISE SPECIFIED		APPROVALS	DATE
DECIMAL DIMENSIONS .XX ± .010	CHECKED		
DECIMAL DIMENSIONS .XXX ± .005	DRWN	RM	5/10/97
ANGULAR ± .01 FRACTIONAL ± 1/64	SCALE	NONE	
MATERIAL	FINISH	NONE	
HEAT TREAT	INSTALLATION GUIDE 2085 PANIC DEVICE & 1900 TOP LATCH		
SHEET 1 OF 2 SHEETS			REV.
DWG. NO. 10-950-1			C

Jackson
CORPORATION
8412 UNION PACIFIC AVE.
LOS ANGELES, CALIF. 90023

PATENT PENDING