



STOREFRONTS

SERIES 450 CENTER / INTERIOR GLAZED STACKED STOREFRONT SYSTEM

450 SERIES SPECIFICATIONS

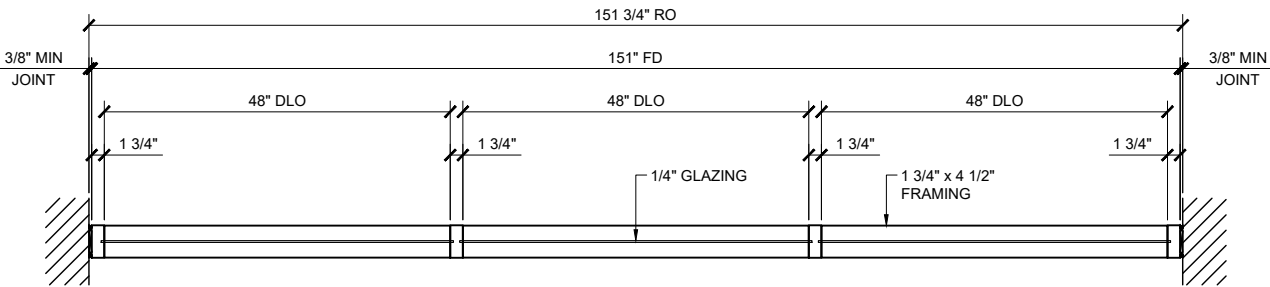
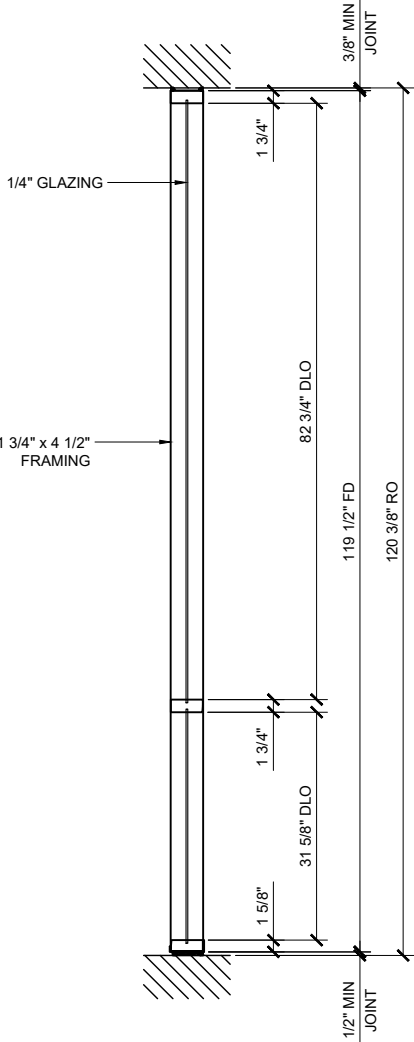
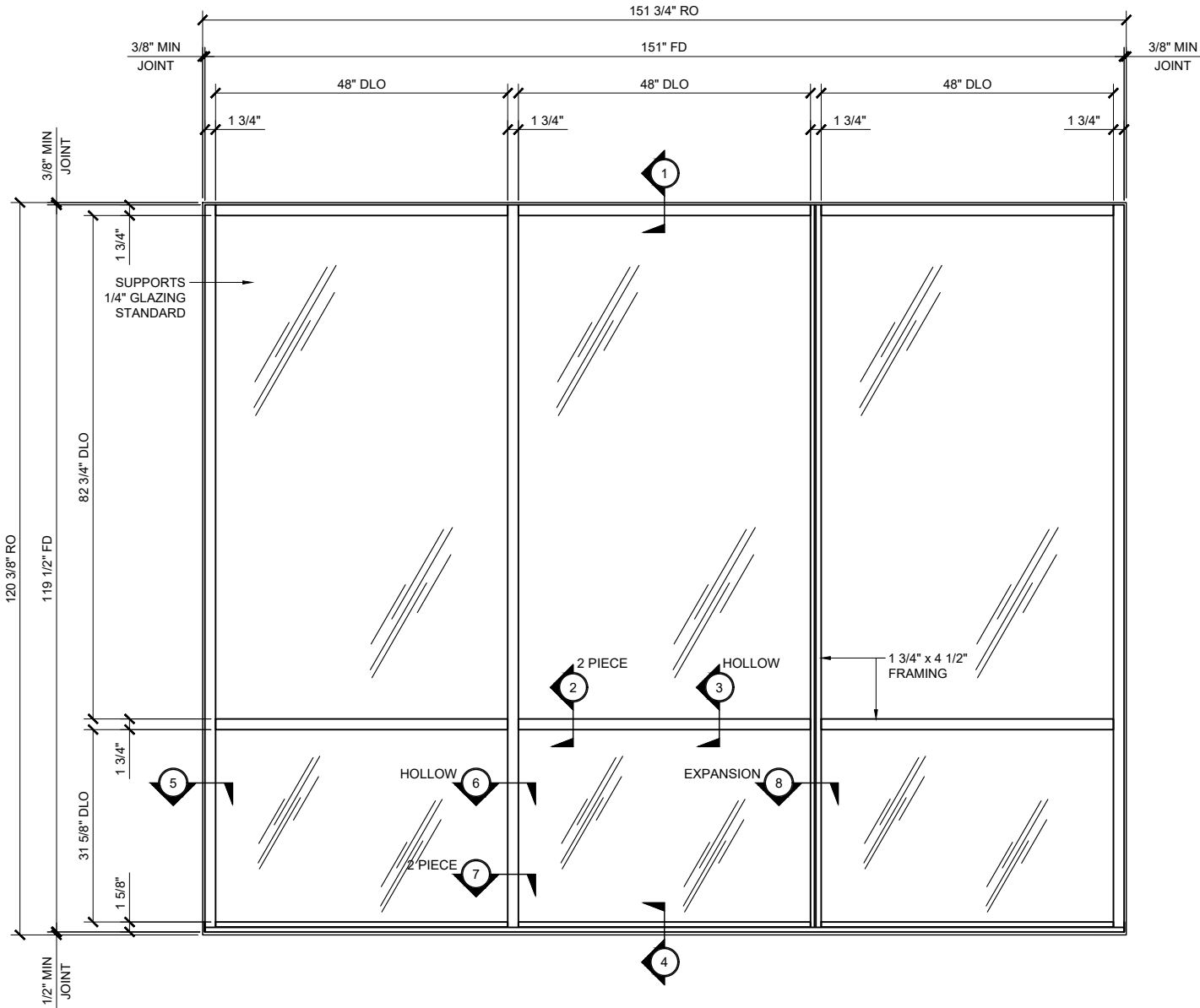
Fabrication and installation labor costs have always been a decisive factor in selecting framing systems for storefront projects. U.S. Aluminum offers cost efficient versatile Center Glazed Systems with clean lines and superb performance. Series 450 may be interior or exterior glazed. A top load E.P.D.M. gasket is used to position and weatherseal the glass in the aluminum pocket. Center Glazed Systems are compatible with most U.S. Aluminum entrance doors.

- 1 3/4" x 4 1/2" frame
- 1/4" Glazing infill
- Full range of accessory components
- Available in an array of architectural coatings and anodized finishes
- Screw spline assembly
- Shear block assembly
- Stacking installation option (SHOWN)
- Interior or Exterior Glazed (INTERIOR GLAZED OPTION SHOWN)

STRUCTURAL DISCLAIMER:

ALL CUSTOMERS WHO IN ANY WAY UTILIZE THIS PRODUCT ARE SOLELY RESPONSIBLE TO CONSULT A STRUCTURAL ENGINEER TO DETERMINE THE SUITABILITY OF THE PRODUCT FOR THE INTENDED USE AND SITE CONDITIONS. ALL INSTALLERS MUST BE QUALIFIED AND HAVE PROFESSIONAL KNOWLEDGE ABOUT COMPLIANCE WITH LOCAL, STATE AND FEDERAL REGULATIONS, SAFETY FACTORS, AND THE APPROPRIATE CHOICE OF FIXING MATERIAL AND PROCEDURES.

GLASS SIZING NOTE:  
REFERENCE U.S. ALUMINUM  
CATALOGS AND WEBSITE'S  
LOAD CHARTS FOR SIZING  
GUIDELINES.



STANDARD ABBREVIATIONS

- |      |                           |
|------|---------------------------|
| RO   | ROUGH OPENING             |
| FD   | FRAME DIMENSION           |
| DLO  | DAYLITE OPENING           |
| DO   | DOOR OPENING              |
| DD   | DOOR DIMENSION            |
| SMC  | SURFACE MOUNTED CLOSER    |
| OHCC | OVERHEAD CONCEALED CLOSER |

Revisions By:

CRL  
ALUMINUM  
C.R. LAURENCE CO. ARCHITECTURAL PRODUCTS  
2503 E. Vernon Avenue, Los Angeles, CA 90038-1897  
PH: (800)-421-6144 FX: (800)-867-7501 www.crlaurence.com

Description:  
U.S. ALUMINUM  
SERIES 450 CENTER GLAZED  
STOREFRONT SYSTEM

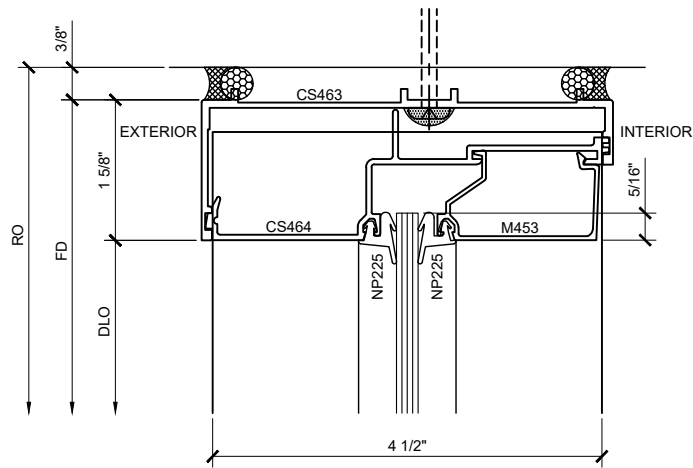
Drawn By: AAD

Date: 10/28/14

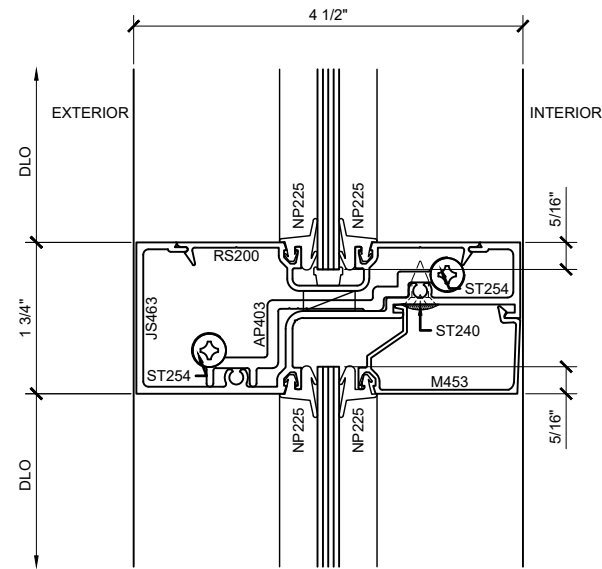
Scale: AS NOTED

File Name: SF 450

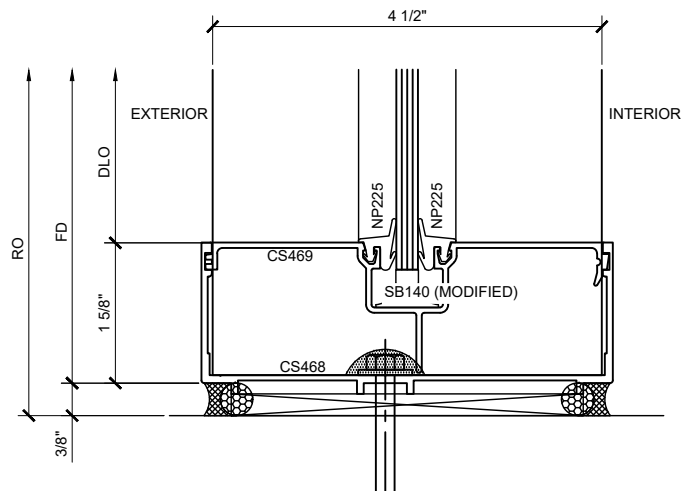
Sheet



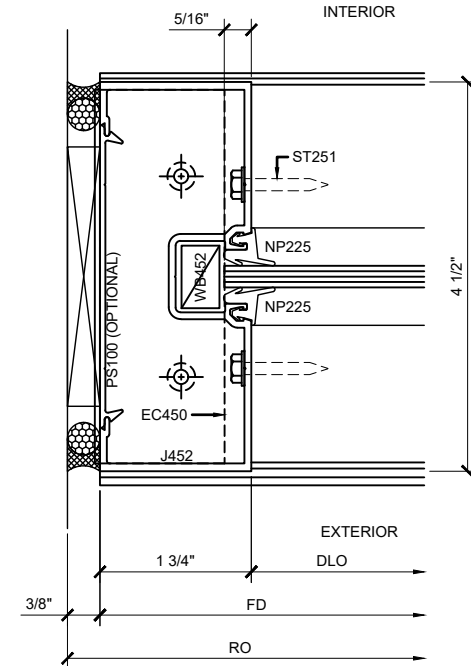
**SECTION DETAIL AT HEAD** ①



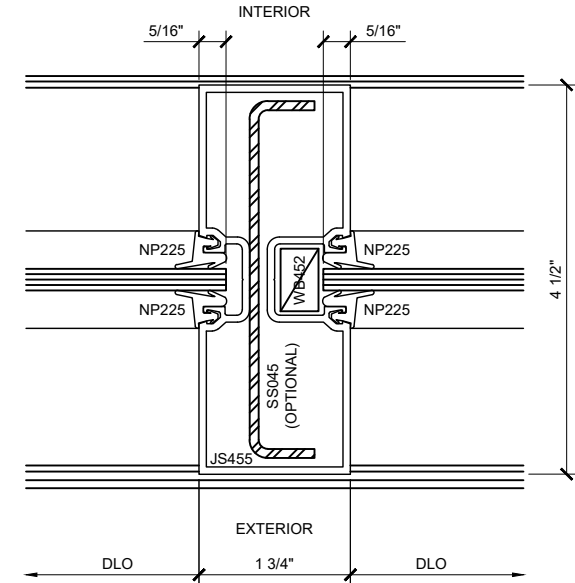
**SECTION DETAIL AT INTERMEDIATE HORIZONTAL** ②  
TYPICAL FOR SHEAR LUG ASSEMBLY



**SECTION DETAIL AT SILL** ④



**SECTION DETAIL AT JAMB** ⑤



**SECTION DETAIL AT HOLLOW INTERMEDIATE VERTICAL** ⑥  
TYPICAL SHEAR BLOCK ASSEMBLY MULLION

## SERIES 450 CENTER / INTERIOR GLAZED STACKED STOREFRONT SYSTEM

Revisions By:

**CAL**  
**ALUMINUM**  
C.R. LAURENCE CO. ARCHITECTURAL PRODUCTS  
2503 E. Vernon Avenue, Los Angeles, CA 90058-1897  
PH: (800)-421-6144 FX: (800)-807-7501 www.crlaurence.com

Description:  
U.S. ALUMINUM  
SERIES 450 CENTER GLAZED  
STOREFRONT SYSTEM

Drawn By: AAD  
Date: 10/28/14  
Scale: AS NOTED  
File Name: SF 450

Sheet

8.2