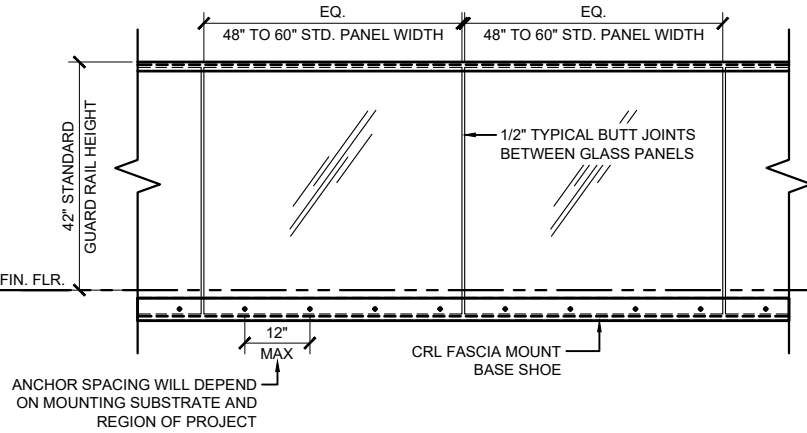
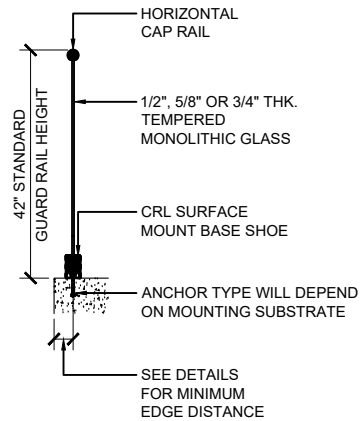
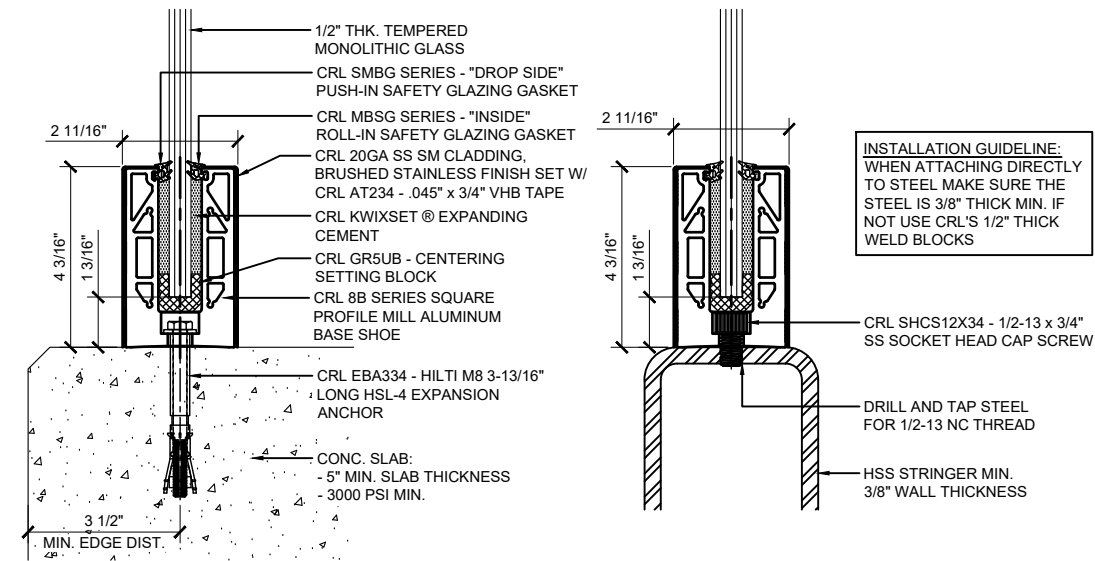


TYPICAL GRS GLASS RAILING ELEVATION VIEW - SURFACE MOUNT



TYPICAL GRS GLASS RAILING ELEVATION VIEW - FASCIA MOUNT

TYPICAL BASE SHOE ATTACHMENTS USING THE 8B SERIES BASE SHOE WITH TAPER-LOC ® SYSTEM



SURFACE MOUNT DETAIL
CONCRETE SUBSTRATE

ANCHOR SPACING WILL DEPEND ON MOUNTING SUBSTRATE AND REGION OF PROJECT

SURFACE MOUNT DETAIL
STEEL SUBSTRATE

12" ON CENTER ANCHOR SPACING

SURFACE MOUNT DETAIL
STEEL SUBSTRATE W/ WELD BLOCK

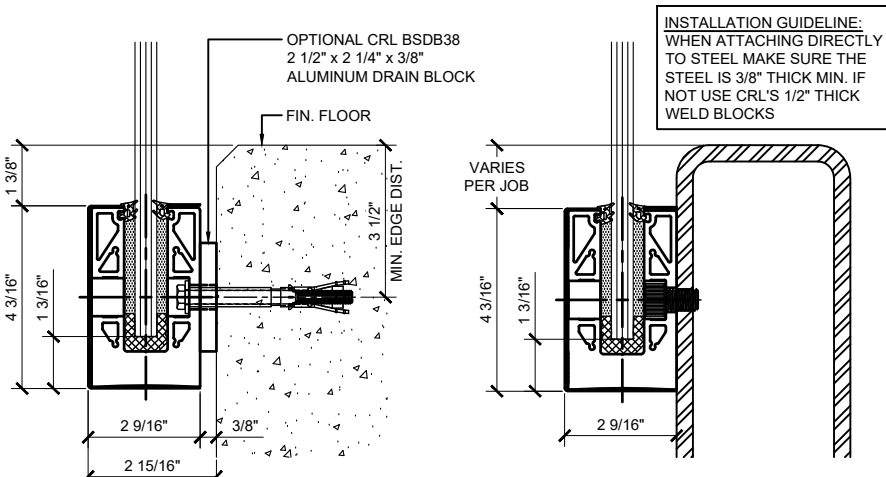
12" ON CENTER ANCHOR SPACING

SURFACE MOUNT DETAIL
WOOD SUBSTRATE

12" ON CENTER ANCHOR SPACING

SURFACE MOUNT DETAIL
CONCRETE SUBSTRATE W/ DRAIN BLOCK

ANCHOR SPACING WILL DEPEND ON MOUNTING SUBSTRATE AND REGION OF PROJECT



FASCIA MOUNT DETAIL
CONCRETE SUBSTRATE

ANCHOR SPACING WILL DEPEND ON MOUNTING SUBSTRATE AND REGION OF PROJECT

FASCIA MOUNT DETAIL
STEEL SUBSTRATE

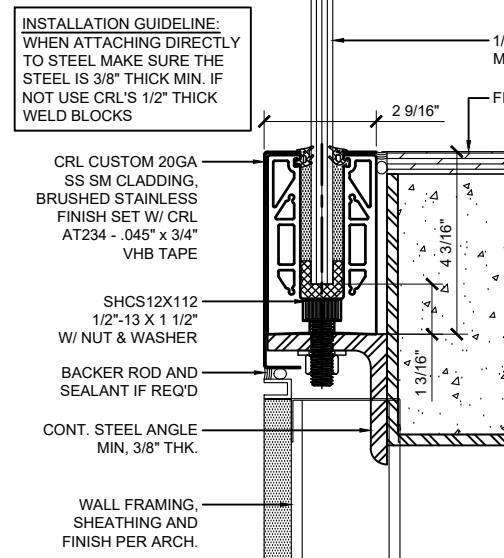
12" ON CENTER ANCHOR SPACING

FASCIA MOUNT DETAIL
STEEL SUBSTRATE

12" ON CENTER ANCHOR SPACING

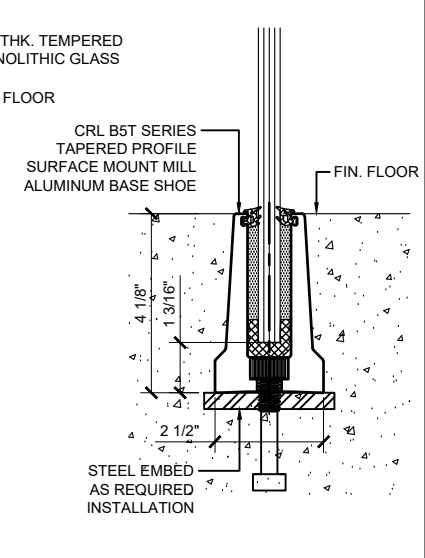
FASCIA MOUNT DETAIL
WOOD SUBSTRATE

ANCHOR SPACING WILL DEPEND ON MOUNTING SUBSTRATE AND REGION OF PROJECT



SURFACE MOUNT DETAIL
STEEL SUBSTRATE W/ CUSTOM CLADDING

12" ON CENTER ANCHOR SPACING



EMBED MOUNT
CONCRETE SUBSTRATE

ANCHOR SPACING WILL DEPEND ON MOUNTING SUBSTRATE AND REGION OF PROJECT

Revisions By:		
△	02/28/25	JO
△	06/28/21	AB
△	06/05/18	VM
△	08/12/16	JG
△	02/08/16	JG

CRL

2508 E. Vernon Avenue, Los Angeles, CA 90058-1897
PH (800) 421-6144 FX 800-597-7501 www.crlaurena.com

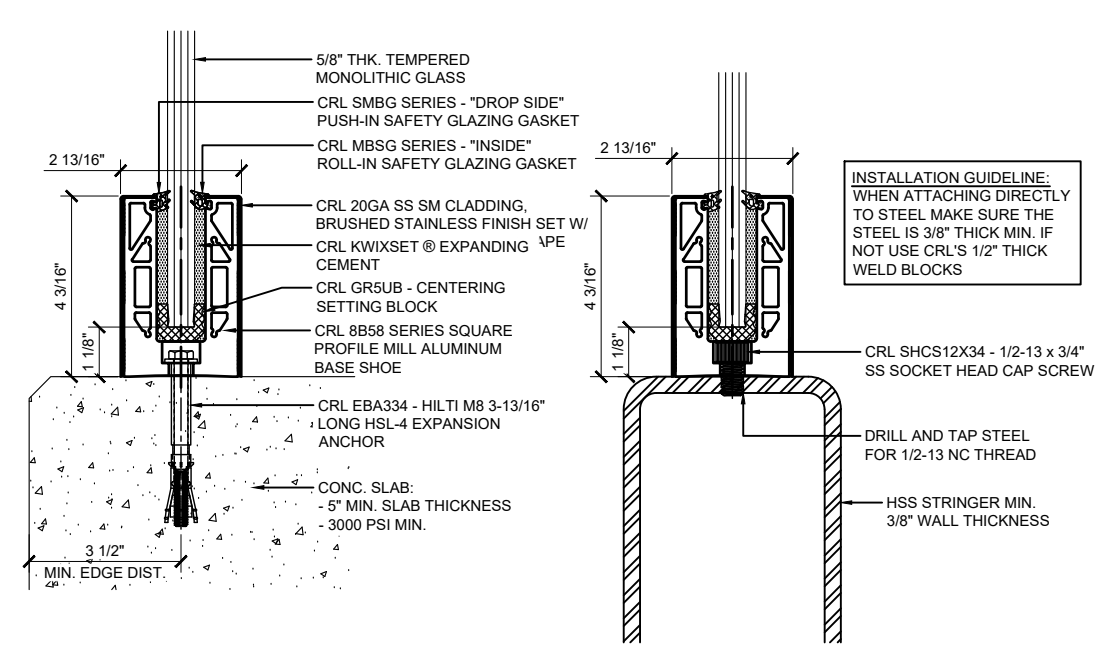
ESR-3269

GRS
GLASS RAILING SYSTEM
WET GLAZED
FOR TEMPERED MONOLITHIC
1/2", 5/8" & 3/4" THK. GLASS

ELEVATIONS AND DETAILS
SURFACE MOUNT AND
FASCIA MOUNT OPTIONS

Drawn By: JG
Date: 12/15/2015
Scale: AS NOTED
File Name:
CRL GRS Monolithic Glass Railing System.dwg
Sheet

TYPICAL BASE SHOE ATTACHMENTS USING THE 8B58 SERIES BASE SHOE WITH TAPER-LOC ® SYSTEM

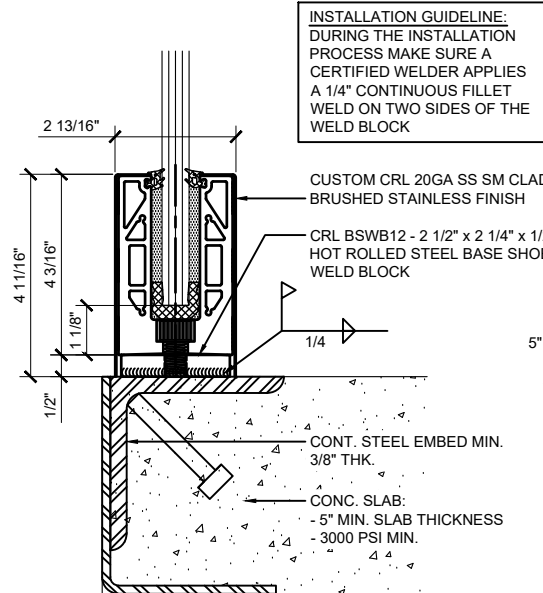


SURFACE MOUNT DETAIL
CONCRETE SUBSTRATE

ANCHOR SPACING WILL DEPEND ON MOUNTING SUBSTRATE AND REGION OF PROJECT

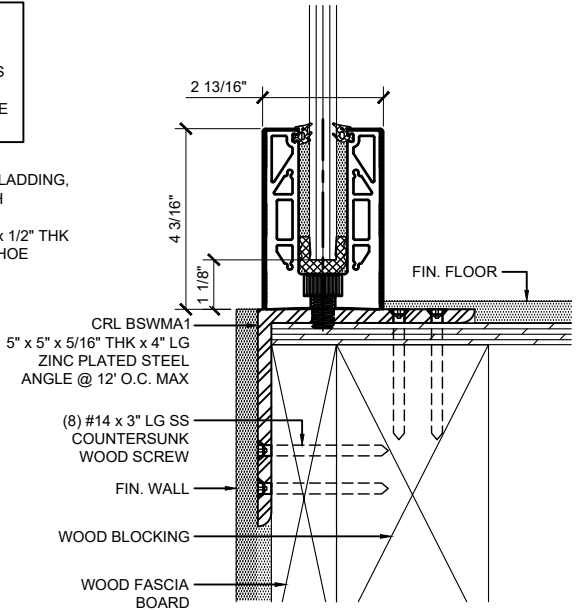
SURFACE MOUNT DETAIL
STEEL SUBSTRATE

12" ON CENTER ANCHOR SPACING



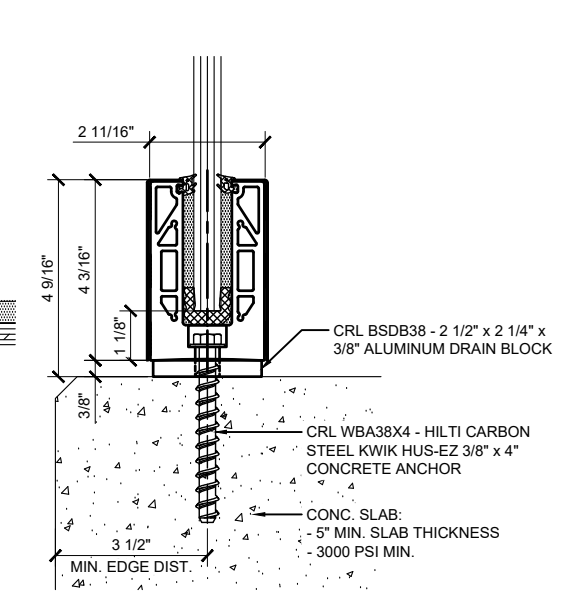
SURFACE MOUNT DETAIL
STEEL SUBSTRATE W/ WELD BLOCK

12" ON CENTER ANCHOR SPACING



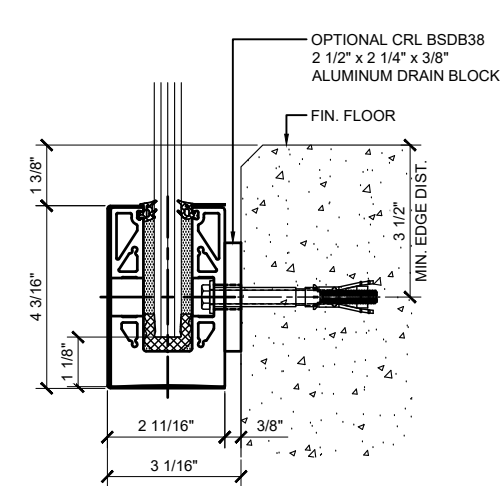
SURFACE MOUNT DETAIL
WOOD SUBSTRATE

12" ON CENTER ANCHOR SPACING



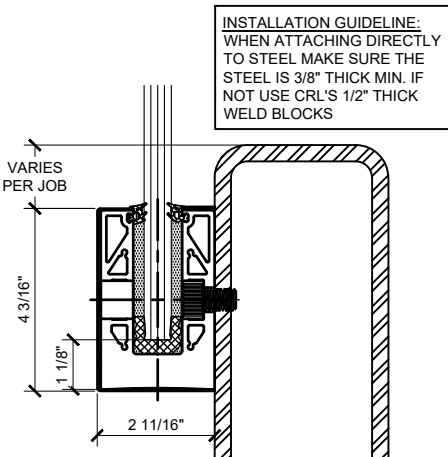
SURFACE MOUNT DETAIL
CONCRETE SUBSTRATE W/ DRAIN BLOCK

ANCHOR SPACING WILL DEPEND ON MOUNTING SUBSTRATE AND REGION OF PROJECT



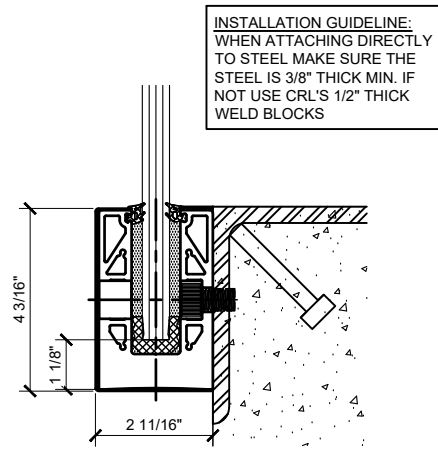
FASCIA MOUNT DETAIL
CONCRETE SUBSTRATE

ANCHOR SPACING WILL DEPEND ON MOUNTING SUBSTRATE AND REGION OF PROJECT



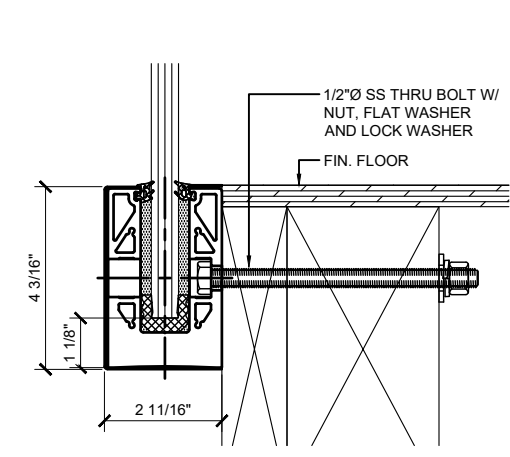
FASCIA MOUNT DETAIL
STEEL SUBSTRATE

12" ON CENTER ANCHOR SPACING



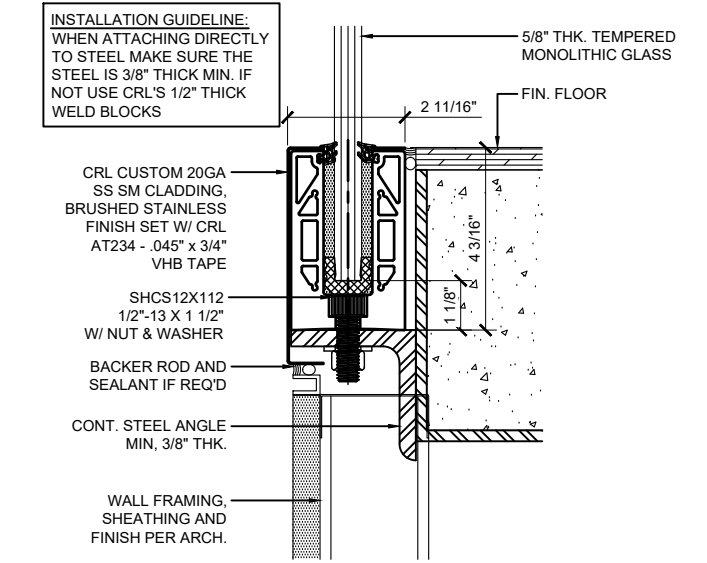
FASCIA MOUNT DETAIL
STEEL SUBSTRATE

12" ON CENTER ANCHOR SPACING



FASCIA MOUNT DETAIL
WOOD SUBSTRATE

ANCHOR SPACING WILL DEPEND ON MOUNTING SUBSTRATE AND REGION OF PROJECT



SURFACE MOUNT DETAIL
STEEL SUBSTRATE W/ CUSTOM CLADDING

12" ON CENTER ANCHOR SPACING

Revisions By:		
△	02/28/25	JO
△	06/28/21	AB
△	06/05/18	VM
△	08/12/16	JG
△	02/08/16	JG

CRL

2503 E. Vernon Avenue, Los Angeles, CA 90058-1897
PH (800) 421-6144 FX (800) 597-7501 www.crlaurena.com

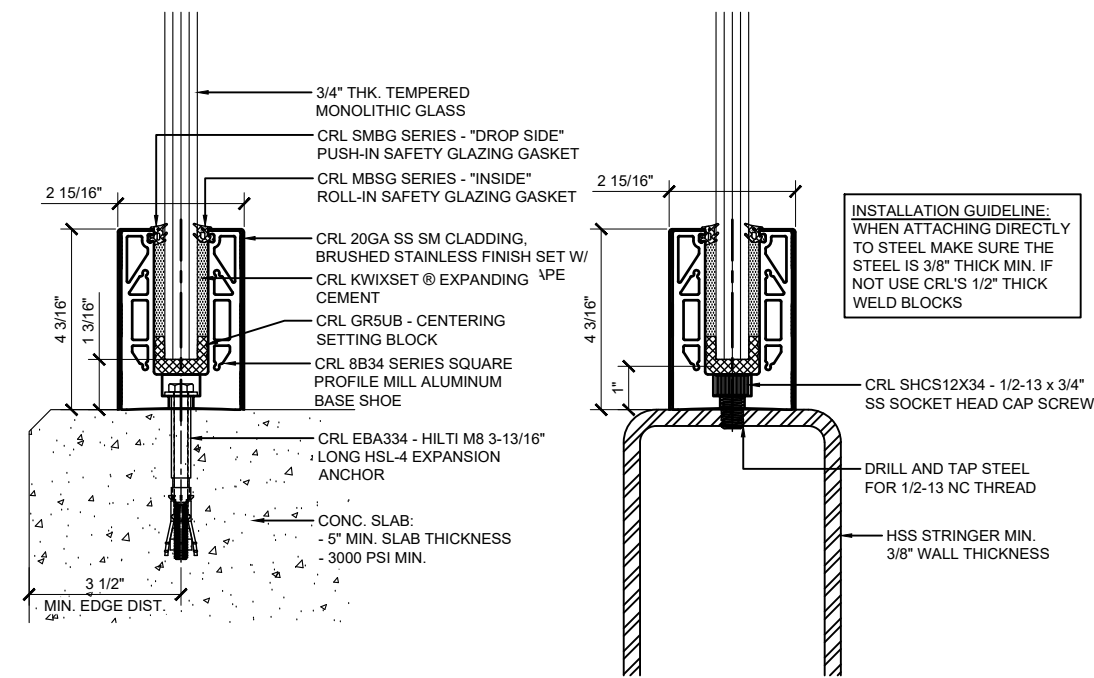
ICG ESR-3269

Description: GRS GLASS RAILING SYSTEM WET GLAZED FOR TEMPERED MONOLITHIC 1/2", 5/8" & 3/4" THK. GLASS

ELEVATIONS AND DETAILS
SURFACE MOUNT AND FASCIA MOUNT OPTIONS

Drawn By:	JG
Date:	12/15/2015
Scale:	AS NOTED
File Name:	CRL GRS Monolithic Glass Railing System.dwg
Sheet	

TYPICAL BASE SHOE ATTACHMENTS USING THE 8B34 SERIES BASE SHOE WITH TAPER-LOC ® SYSTEM



SURFACE MOUNT DETAIL
CONCRETE SUBSTRATE

ANCHOR SPACING WILL DEPEND ON MOUNTING
SUBSTRATE AND REGION OF PROJECT

SURFACE MOUNT DETAIL
STEEL SUBSTRATE

12" ON CENTER ANCHOR SPACING

SURFACE MOUNT DETAIL
STEEL SUBSTRATE W/ WELD BLOCK

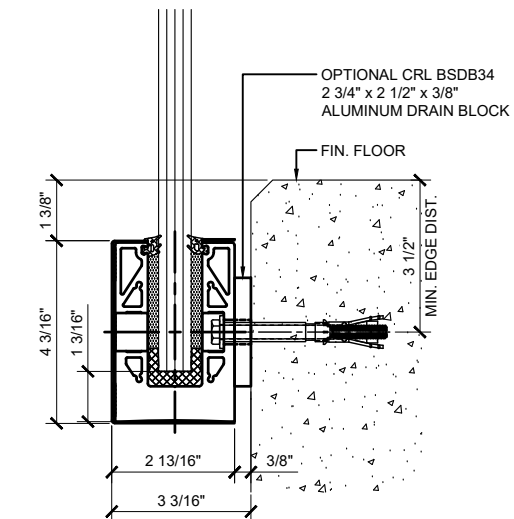
12" ON CENTER ANCHOR SPACING

SURFACE MOUNT DETAIL
WOOD SUBSTRATE

12" ON CENTER ANCHOR SPACING

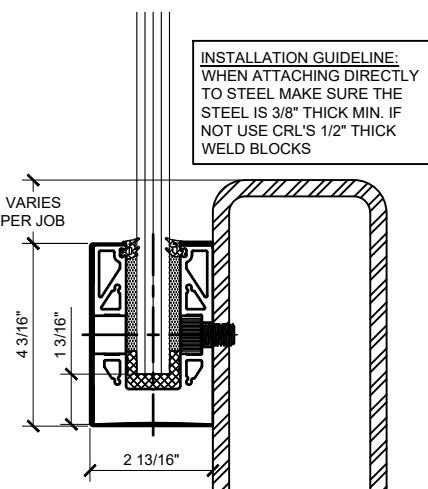
SURFACE MOUNT DETAIL
CONCRETE SUBSTRATE W/ DRAIN BLOCK

ANCHOR SPACING WILL DEPEND ON MOUNTING
SUBSTRATE AND REGION OF PROJECT



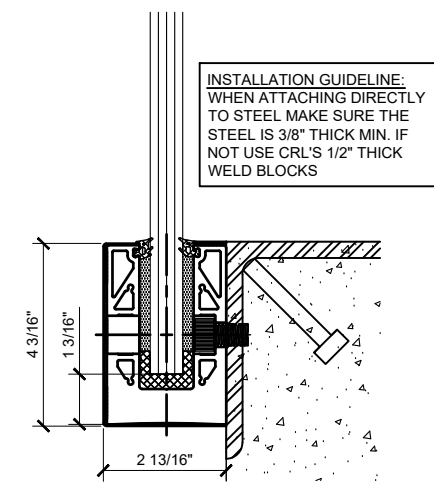
FASCIA MOUNT DETAIL
CONCRETE SUBSTRATE

ANCHOR SPACING WILL DEPEND ON MOUNTING
SUBSTRATE AND REGION OF PROJECT



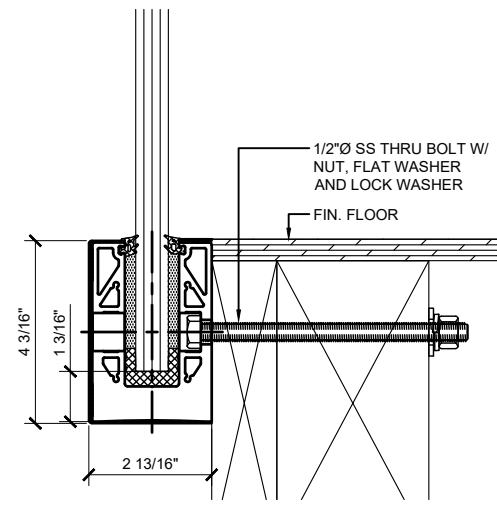
FASCIA MOUNT DETAIL
STEEL SUBSTRATE

12" ON CENTER ANCHOR SPACING



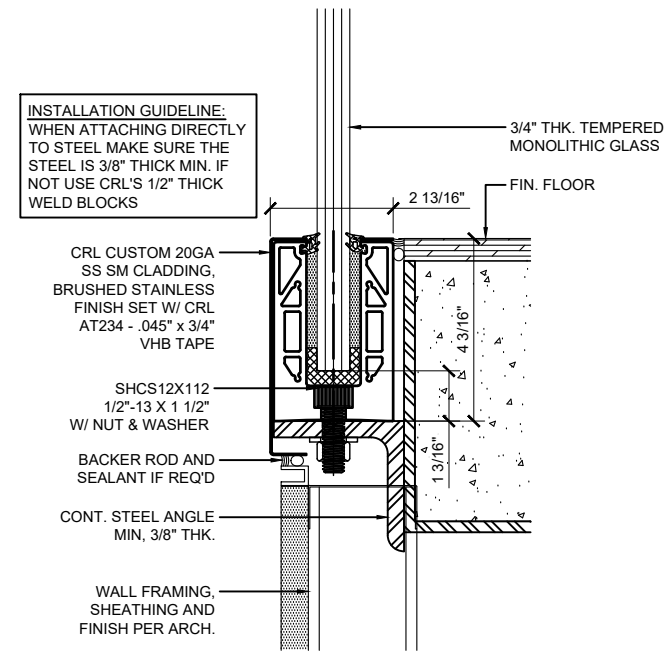
FASCIA MOUNT DETAIL
STEEL SUBSTRATE

12" ON CENTER ANCHOR SPACING



FASCIA MOUNT DETAIL
WOOD SUBSTRATE

ANCHOR SPACING WILL DEPEND ON MOUNTING
SUBSTRATE AND REGION OF PROJECT



SURFACE MOUNT DETAIL
STEEL SUBSTRATE W/ CUSTOM CLADDING

12" ON CENTER ANCHOR SPACING

INSTALLATION GUIDELINE:
DURING THE INSTALLATION
PROCESS MAKE SURE A
CERTIFIED WELDER APPLIES
A 1/4" CONTINUOUS FILLET
WELD ON TWO SIDES OF THE
WELD BLOCK

CUSTOM CRL 20GA SS SM CLADDING,
BRUSHED STAINLESS FINISH

CRL BSWB712 - 2 3/4" x 2 1/2" x 1/2"
THK HOT ROLLED STEEL BASE SHOE
WELD BLOCK

CRL BSWMA1
5" x 5" x 5/16" THK x 4" LG
ZINC PLATED STEEL
ANGLE @ 12" O.C. MAX

(8) #14 x 3" LG SS
COUNTERSUNK
WOOD SCREW

FIN. WALL

WOOD BLOCKING

WOOD FASCIA
BOARD

CONT. STEEL EMBED MIN.
3/8" THK.

CONC. SLAB:
- 5" MIN. SLAB THICKNESS
- 3000 PSI MIN.

CRL BSDB34 - 2 3/4" x 2 1/2" x 3/8"
ALUMINUM DRAIN BLOCK

CRL WBA38X4 - HILTI CARBON
STEEL KWIK HUS-EZ 3/8" x 4"
CONCRETE ANCHOR

CONC. SLAB:
- 5" MIN. SLAB THICKNESS
- 3000 PSI MIN.

Revisions By:		
△	02/28/25	JO
△	06/28/21	AB
△	06/05/18	VM
△	08/12/16	JG
△	02/08/16	JG

CRL

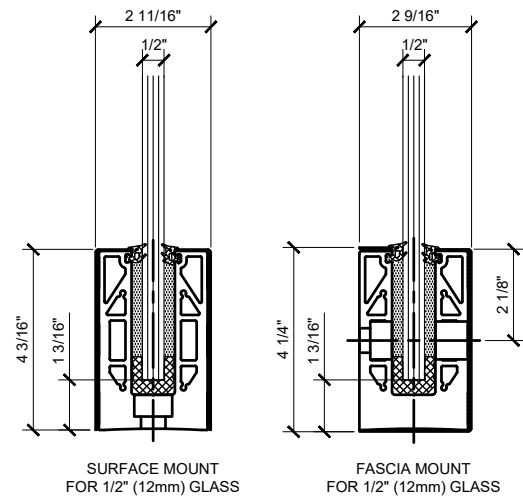
2503 E. Vernon Avenue, Los Angeles, CA 90058-1897
PH (800) 421-6144 FX 800-587-7501 www.crlaurena.com

ICC ESR-3269

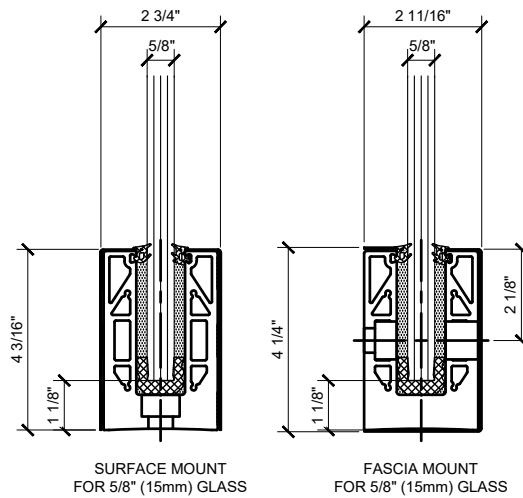
Description:
GRS
GLASS RAILING SYSTEM
WET GLAZED
FOR TEMPERED MONOLITHIC
1/2", 5/8" & 3/4" THK. GLASS

ELEVATIONS AND DETAILS
SURFACE MOUNT AND
FASCIA MOUNT OPTIONS

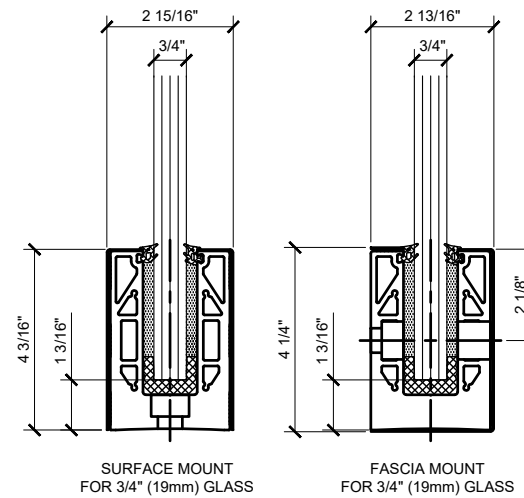
Drawn By: JG
Date: 12/15/2015
Scale: AS NOTED
File Name:
CRL GRS Monolithic Glass Railing System.dwg
Sheet



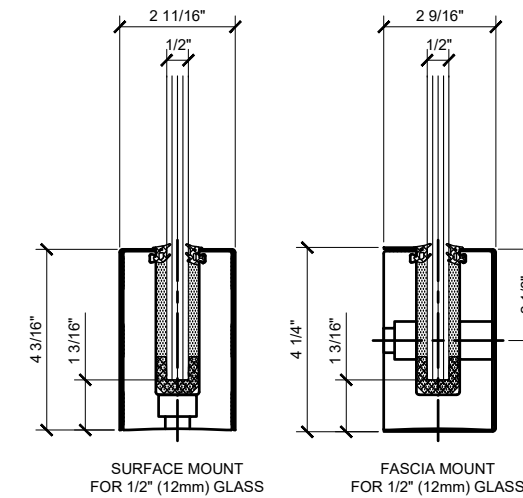
8B SERIES BASE SHOE



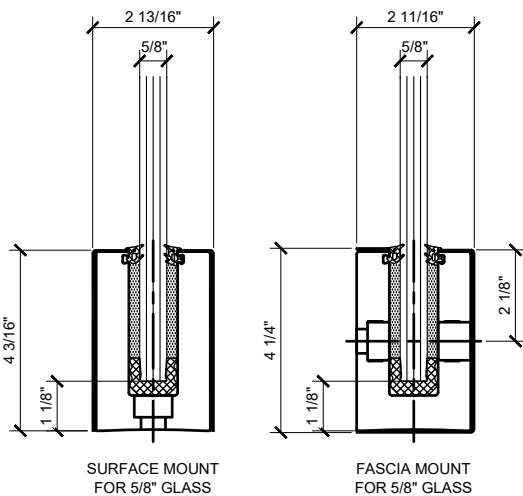
8B58 SERIES BASE SHOE



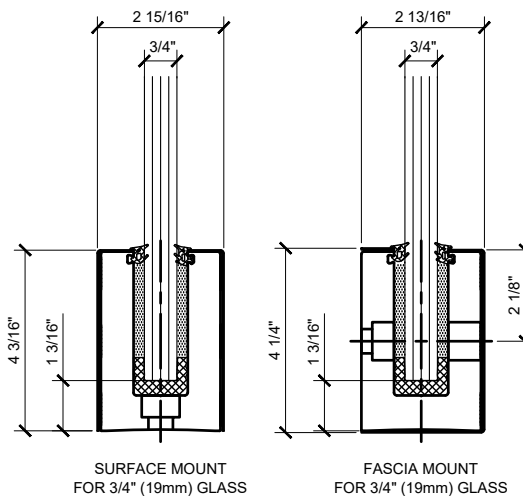
8B34 SERIES BASE SHOE



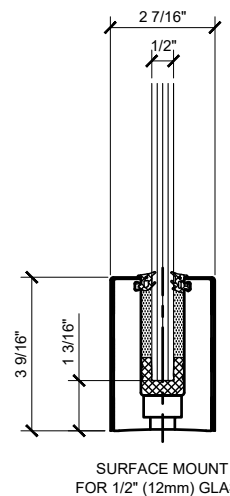
B5S SERIES BASE SHOE



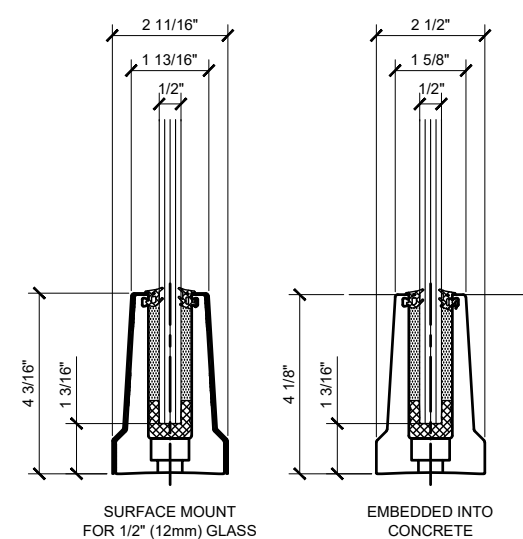
B6N SERIES BASE SHOE



B7S SERIES BASE SHOE



B5L SERIES BASE SHOE
*NOTE: B5L BASE SHOE CANNOT BE USED W/ TAPER-LOC ®.



B5T SERIES BASE SHOE

Revisions By:		
Δ	02/28/25	JO
Δ	06/28/21	AB
Δ	06/05/18	VM
Δ	08/12/16	JG
Δ	02/08/16	JG

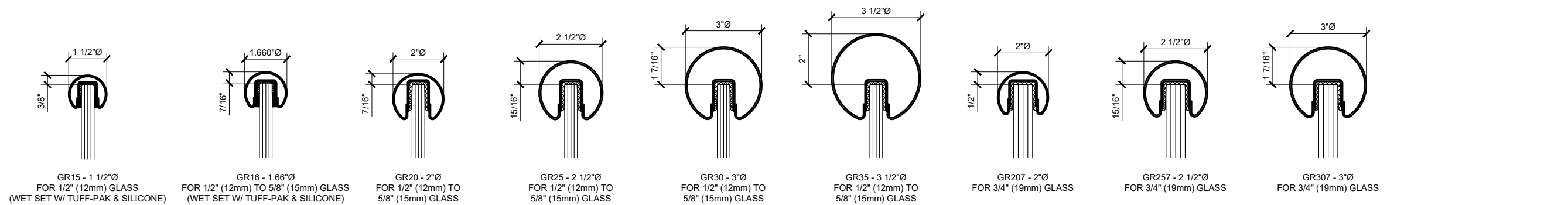
2503 E. Vernon Avenue, Los Angeles, CA 90058-1897
PH: (800)-421-6144 FX: 800-587-7591 www.crlaurena.com

Description: GRS GLASS RAILING SYSTEM WET GLAZED FOR TEMPERED MONOLITHIC 1/2", 5/8" & 3/4" THK. GLASS

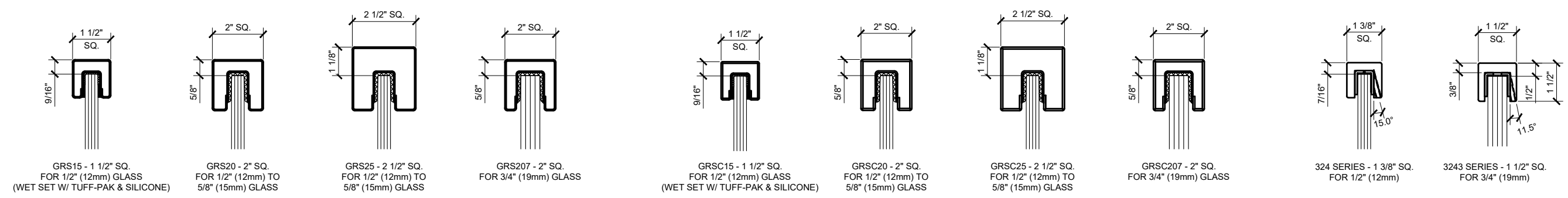
BASE SHOE OPTIONS
SURFACE & FASCIA MOUNT

Drawn By: JG
Date: 12/15/2015
Scale: AS NOTED
File Name: CRL GRS Monolithic Glass Railing System.dwg
Sheet

4



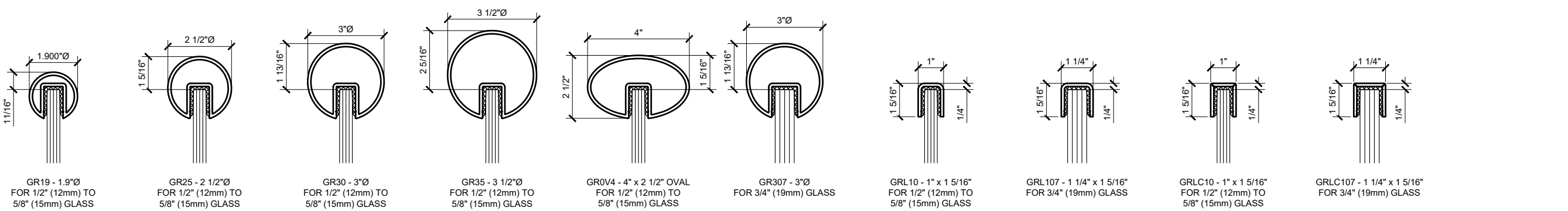
BUMP-FORMED & WELDED PREMIUM RADIUS PROFILE CAP RAIL



BUMP-FORMED & WELDED PREMIUM SQUARE PROFILE CAP RAIL

SQUARE PROFILE CRISP CORNER CAP RAIL

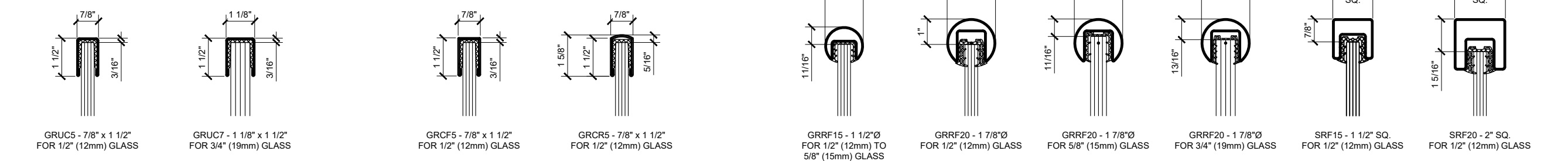
BLUMCRAFT ® EXTRUDED SOLID ALUM CAP RAIL



EXTRUDED ALUMINUM CAP RAIL

LOW PROFILE 11 GAUGE CAP RAIL

LOW PROFILE 11 GAUGE CRISP CORNER CAP RAIL



U-CHANNEL 18 GAUGE CAP RAIL

U-CHANNEL 18 GAUGE CRISP CORNER CAP RAIL

ROLL-FORMED CAP RAIL

Revisions By:

△	02/28/25	JO
△	06/28/21	AB
△	06/05/18	VM
△	08/12/16	JG
△	02/08/16	JG

CRL

2503 E. Vernon Avenue, Los Angeles, CA 90058-1897
PH: (800)-421-6144 FX: 800-597-7501 www.crlaurema.com

ICG ES

ESR-3269

Description:

GRS
GLASS RAILING SYSTEM
WET GLAZED
FOR TEMPERED MONOLITHIC
1/2", 5/8" & 3/4" THK. GLASS

CAP RAIL OPTIONS

Drawn By: JG

Date: 12/15/2015

Scale: AS NOTED

File Name: CRL GRS Monolithic Glass Railing System.dwg

Sheet

5