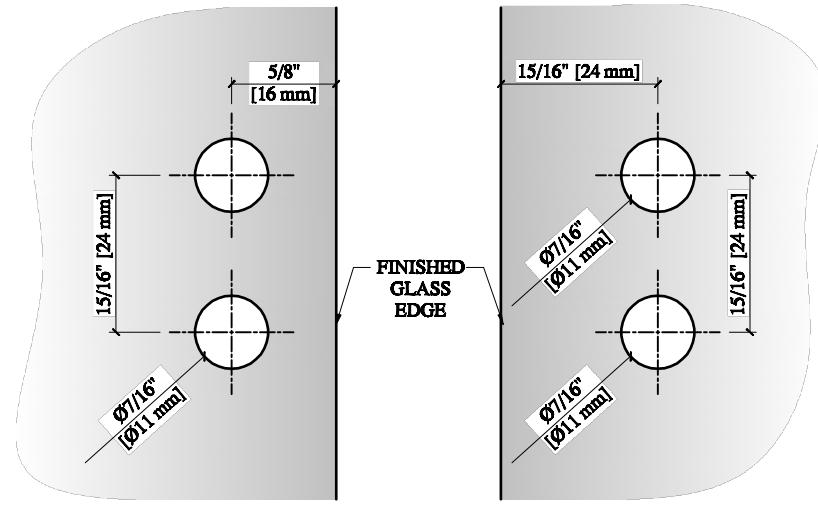


FIXED SIDE
GLASS FABRICATION

PIVOT SIDE
GLASS FABRICATION

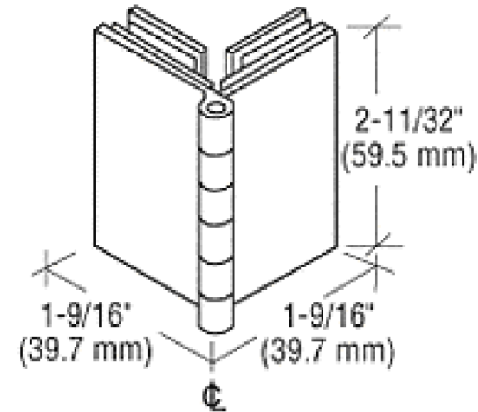
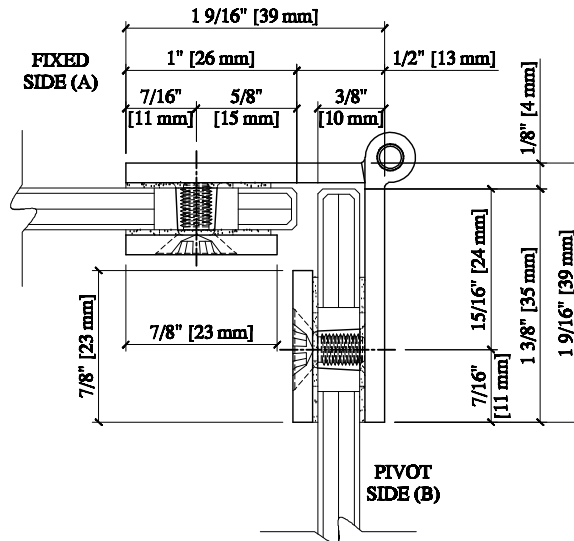
**GLASS FABRICATION
FOR 5/16" (8mm) THK. GLASS**



FIXED SIDE
GLASS FABRICATION

PIVOT SIDE
GLASS FABRICATION

**GLASS FABRICATION
FOR 1/4" (6mm) THK. GLASS**



**90 DEG. GLASS TO GLASS
RETURN HINGE**

CATALOG NUMBER	FINISH
BH254	CHROME
BH252	BRASS

THE MAXIMUM RECOMMENDED DOOR WIDTH IS 22" (559 mm).
AND A MAXIMUM WEIGHT OF 30 lbs. (13.6 kg)

ALWAYS USE DIMENSIONS SHOWN ON THE PLAN.
DO NOT SCALE OR DIMENSION ACTUAL DRAWING
TO ENSURE ACCURACY



ARCHITECTURAL PRODUCTS
PH: 800-421-6144 FX: 800-262-3299
WWW.CRLAURENCE.COM

DESCRIPTION:
90 DEGREE GLASS TO GLASS RETURN HINGE
FOR 1/4" (6 mm) TO 5/16" (8mm) GLASS

CAT. NO: (SEE CHART)	DATE: 12/12/09
FILE NAME: BH254	SCALE: N.T.S.
DRAWN BY: R.P.A.	CHECKED BY: C.H.
SHT 1 OF 1	