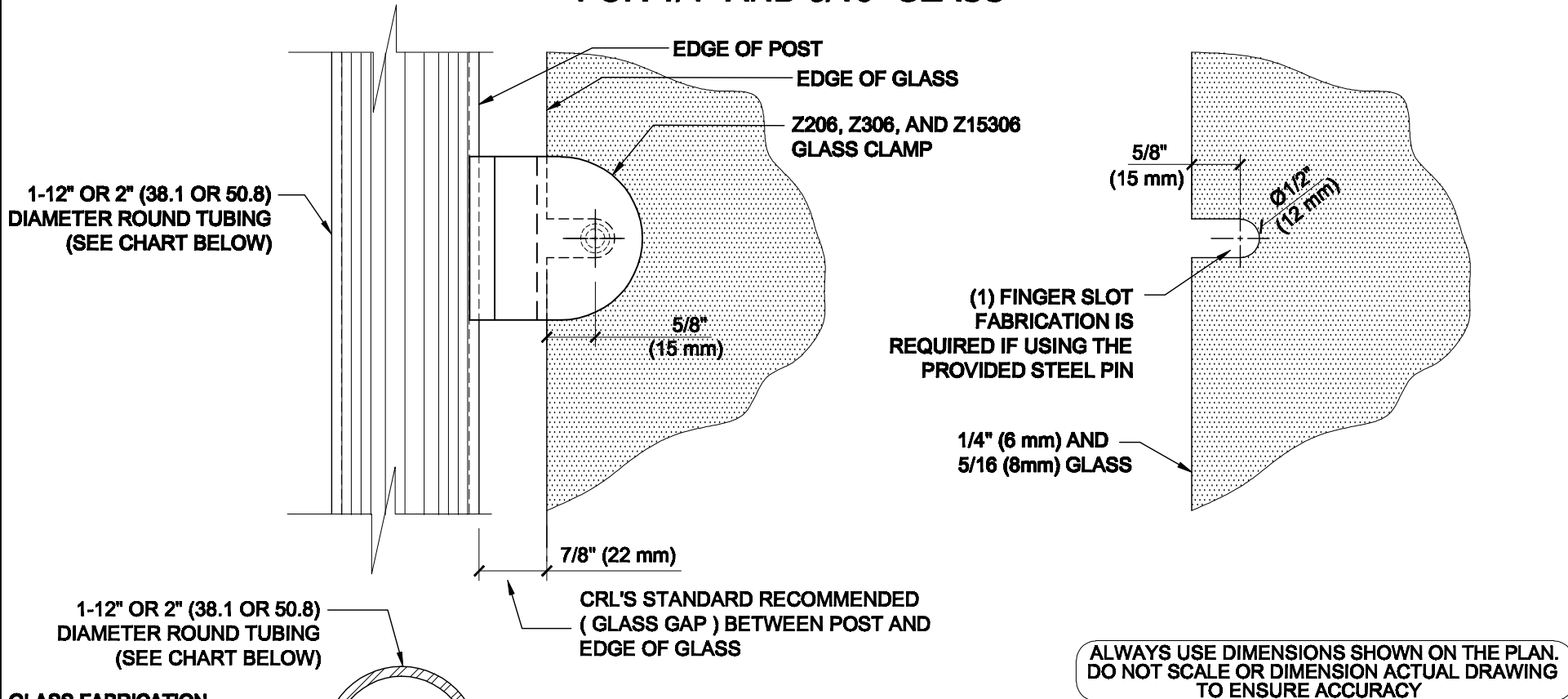
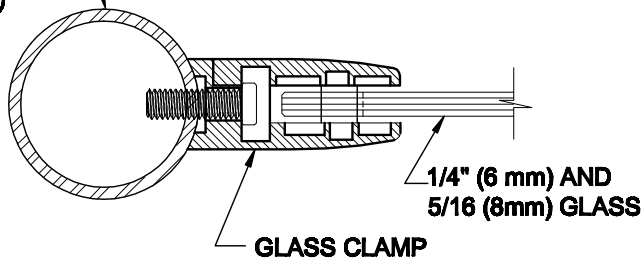


# GLASS FABRICATION TEMPLATE FOR THE Z-SERIES ROUND TYPE RADIUS BASE CLAMPS FOR 1/4" AND 5/16" GLASS



**GLASS FABRICATION  
TEMPLATE USED FOR:**

CATALOG NUMBER	TUBE DIA
Z206BR	2" (50.8 mm)
Z206CH	2" (50.8 mm)
Z206SC	2" (50.8 mm)
Z206BN	2" (50.8 mm)
Z206GP	2" (50.8 mm)
Z206W	2" (50.8 mm)
Z306BS	2" (50.8 mm)
Z306PS	2" (50.8 mm)
Z15306BS	1-1/2" (38.1 mm)
Z15306PS	1-1/2" (38.1 mm)



**SPECIFICATIONS:**

**GLASS THICKNESS:** MODELS FOR 1/4" AND 5/16" (6 TO 8 mm) GLASS.

**BASE DESIGN:** RADIUS BACK

**FOR USE WITH:** 1-1/2" OR 2" (38.1 OR 50.8 mm) DIAMETER ROUND TUBING (SEE CHART).

**MATERIAL:** CHOICE OF ZINC CONSTRUCTED OR STAINLESS STEEL. STAINLESS STEEL OR POWDER PAINTED ZINC CLAMPS ARE RECOMMENDED FOR MORE DURABILITY IN EXTERIOR APPLICATIONS.

**GLASS FABRICATION:** FOR 1/4" (6 mm), 5/16" (8mm), THICK GLASS. 1/2" (12mm) FINGER SLOT REQUIRED IF USING PROVIDED STEEL PIN FOR GLASS SUPPORT

**INCLUDES:** RUBBER GASKETS AND STEEL PIN (FOR OPTIONAL USE) WITH GROMMET.



**ARCHITECTURAL PRODUCTS**  
PH: 800-421-6144 FX: 800-262-3299  
WWW.CRLAURENCE.COM

**DESCRIPTION:**

**Z-SERIES ROUND TYPE RADIUS BASE GLASS CLAMP**

**FOR 1/4" (6mm) & 5/16" (8mm) THICK GLASS**

CAT. NO: (SEE CHART)

DATE: 10/21/09

FILE NAME: Z206-Gls Fab REV

SCALE: N.T.S.

DRAWN BY: R.A.

CHECKED BY: C.H.

SHT 1 OF 1