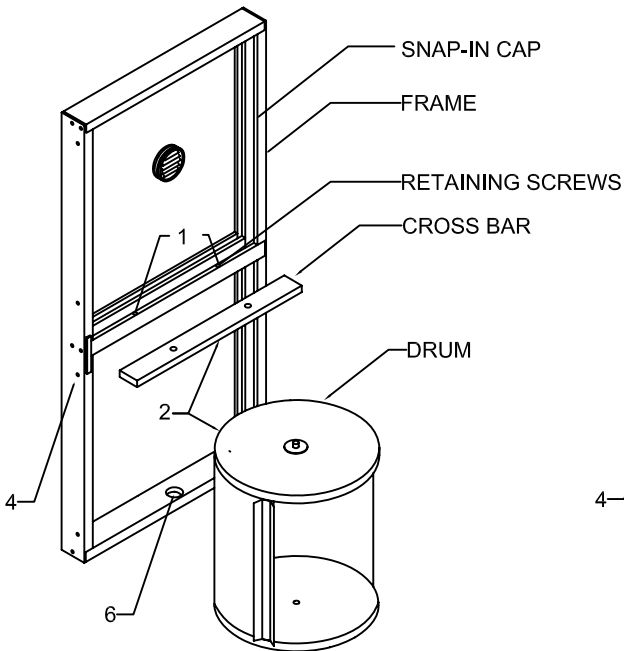
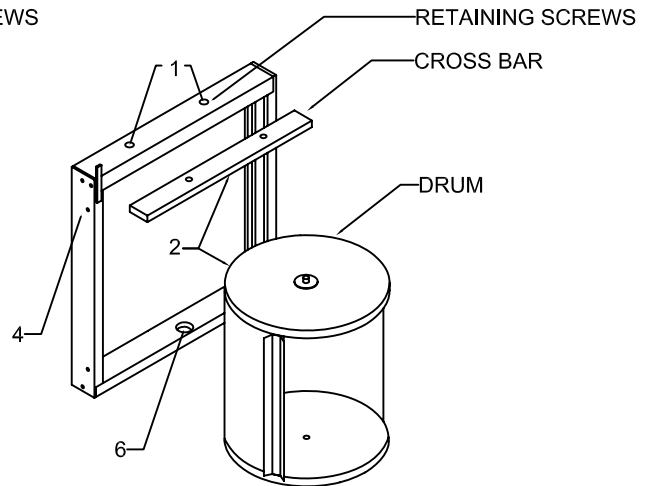


# ROTATING SERVICE WINDOWS P/N RS200A and RS201DU, and ROTATING SERVICE DRUM P/N RS200DRUM and RS201DRUM Installation Instructions



**ROTATING SERVICE WINDOW**



**ROTATING SERVICE DRUM**

## **RECOMMENDED ROUGH OPENINGS**

Rotating Service Windows RS200A / RS201DU

16 1/8" W x 36 1/4" H

Rotating Service Drums RS200DRUM / RS201DRUM

16 1/8" W x 18 5/8" H

## **INSTALLATION PROCEDURE**

- 1 Remove the two (2) retaining screws
- 2 Remove cross bar and lift drum out
- 3 Place frame in installation position
- 4 Drill holes in frame for anchors by others. See drawings for recommended locations.
- 5 After shimming to ensure frame / opening is snug and square, install anchors, by others, through frame to secure it
- 6 To reinstall drum, place lower drum pivot into recess in bottom channel  
Tilt drum up into position, and secure with the cross bar, and two retaining screws
- 7 Rotating Service Windows only - Install snap-in caps (shipped loose)

**P/N RS201NSTR**