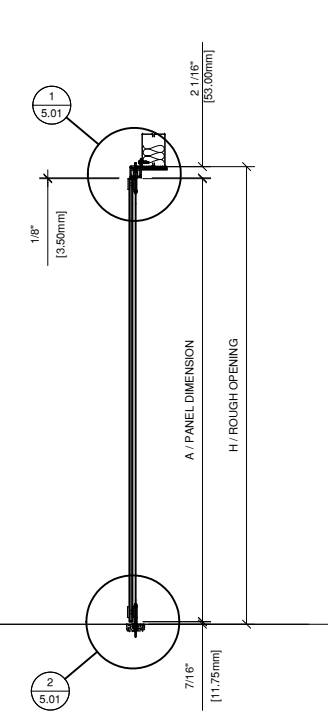
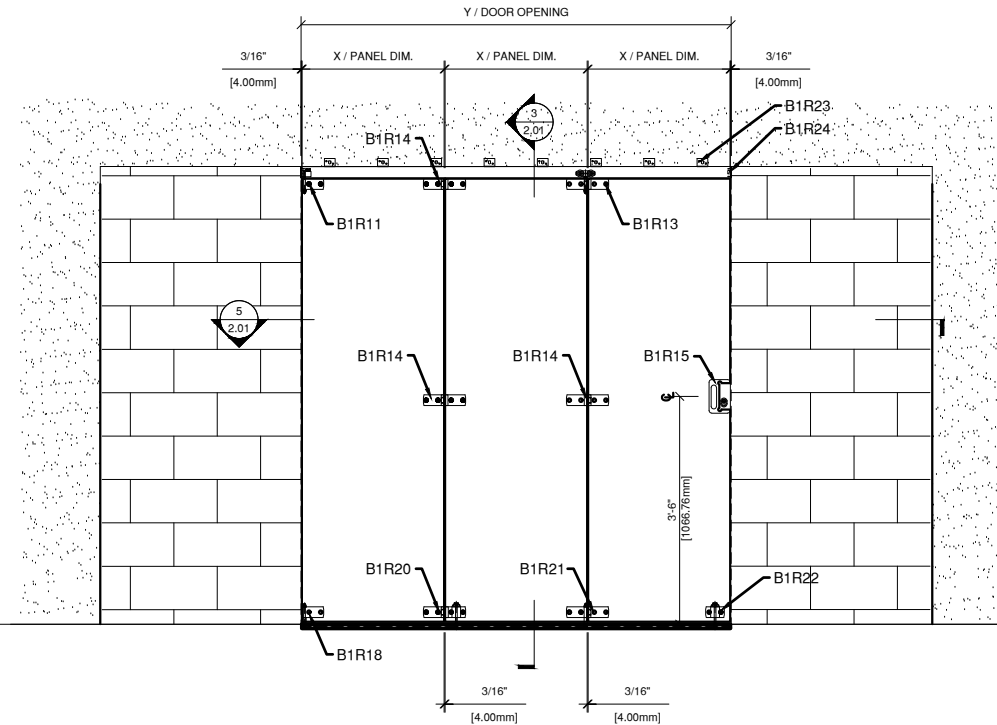
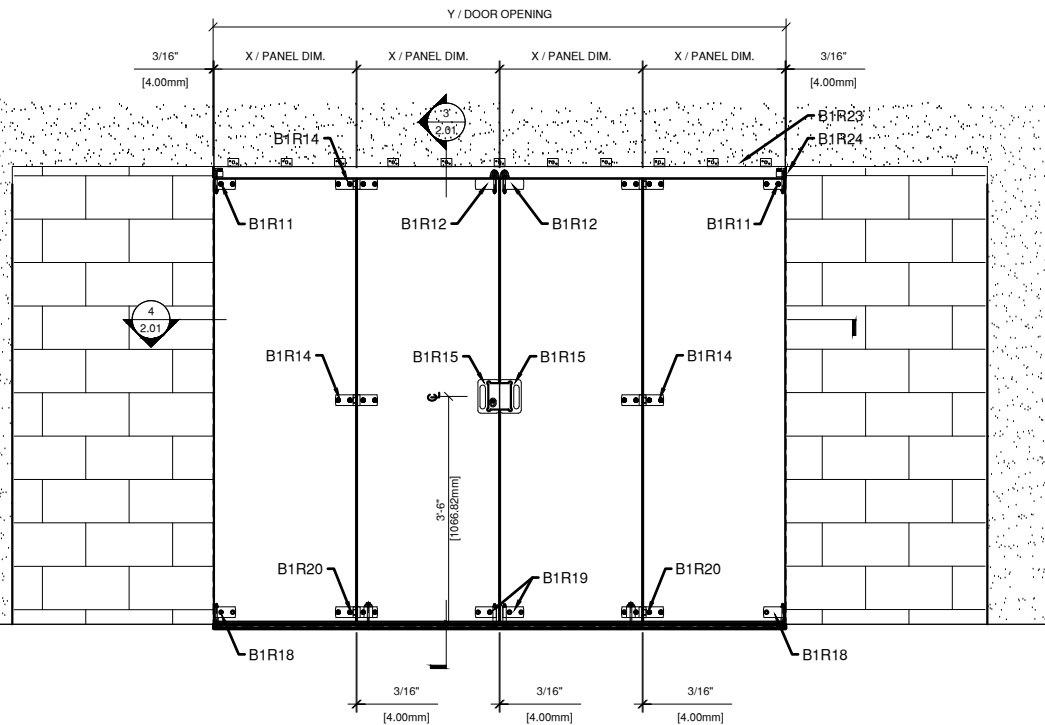


CRL BIRMINGHAM SERIES BI-FOLDING TOP HUNG SLIDING DOOR SYSTEM

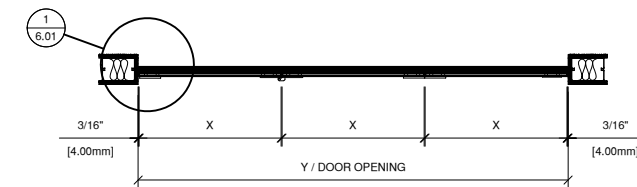
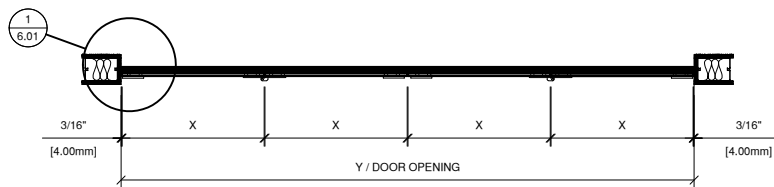
Revisions By:



1 CRL BIRMINGHAM SERIES 2x2 BI-FOLDING DOOR KIT (B1R22BP)
ARCH REF: NONE 3/4"=1'-0"

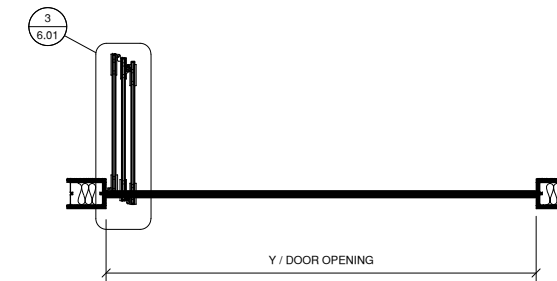
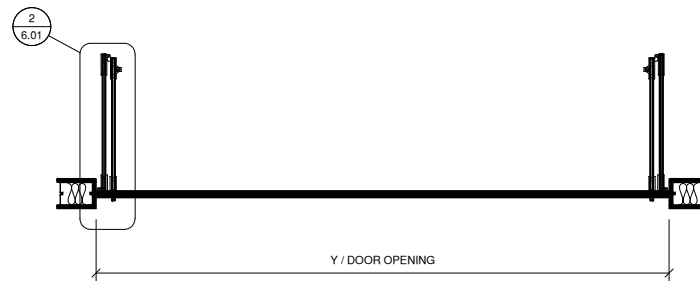
2 CRL BIRMINGHAM 3 PANEL BI-FOLDING DOOR KIT (B1R3S)
ARCH REF: NONE 3/4"=1'-0"

3 SECTION VIEW
ARCH REF: NONE 3/4"=1'-0"



4 PLAN VIEW ~ CLOSED ELEVATION
ARCH REF: NONE 3/4"=1'-0"

5 PLAN VIEW ~ CLOSED ELEVATION
ARCH REF: NONE 3/4"=1'-0"



4A PLAN VIEW ~ FULLY OPEN
ARCH REF: NONE 3/4"=1'-0"

5A PLAN VIEW ~ FULLY OPEN
ARCH REF: NONE 3/4"=1'-0"

DOOR HEIGHT :
A = H - 67 mm
A = H - 2 5/8 "

DOOR PANEL WIDTH :
 $X = \left(\frac{Y - 4 \text{ mm}}{N} \right) - 4 \text{ mm}$
 $X = \left(\frac{Y - 3/16"}{N} \right) - 3/16"$

Y = TOTAL WIDTH
N = NUMBER OF LEAFS
X = WIDTH GLASS DOOR

IMPORTANT NOTE:

- DIMENSION AND HARDWARE ARE JUST FOR INFORMATION ONLY. DO NOT TAKE ANY MEASUREMENT FROM THIS DRAWING.
- MAXIMUM PANEL WEIGHT OF 110 LBS (50 KG), WITH THE MAXIMUM WIDTH OF 29" (737 mm) AND MAXIMUM HEIGHT OF 118" (3000 mm).
- FITTING CAN ACCOMMODATE 3/8" OR 1/2" (10 mm OR 12 mm) TEMPERED GLASS.
- OPTIONAL LOCKING HANDLE (B1R15) AND RECEIVER HANDLE (B1R16) ARE AVAILABLE. (ORDERED SEPARATELY)
- FOR OPENINGS TALLER THAN 104" (2600 mm), ADDITIONAL B1R14 GLASS-TO-GLASS PATCHES MUST BE USED AT PANEL HEIGHT MIDPOINT TO ENSURE SAFE OPERATION OF THE SYSTEM (ORDERED SEPARATELY)

STRUCTURAL DISCLAIMER:
ALL CUSTOMERS WHO IN ANY WAY UTILIZE THIS PRODUCT ARE SOLELY RESPONSIBLE TO CONSULT A STRUCTURAL ENGINEER TO DETERMINE THE SUITABILITY OF THE PRODUCT FOR THE INTENDED USE AND SITE CONDITIONS. ALL INSTALLERS MUST BE QUALIFIED AND HAVE PROFESSIONAL KNOWLEDGE ABOUT COMPLIANCE WITH LOCAL, STATE AND FEDERAL REGULATIONS, SAFETY FACTORS, AND THE APPROPRIATE CHOICE OF FIXING MATERIAL AND PROCEDURES.

Description:
CRL BIRMINGHAM SERIES
BI-FOLDING TOP HUNG
SLIDING DOOR SYSTEM
FOR 3/8" OR 1/2" GLASS

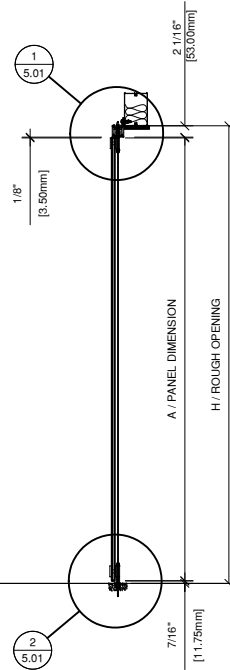
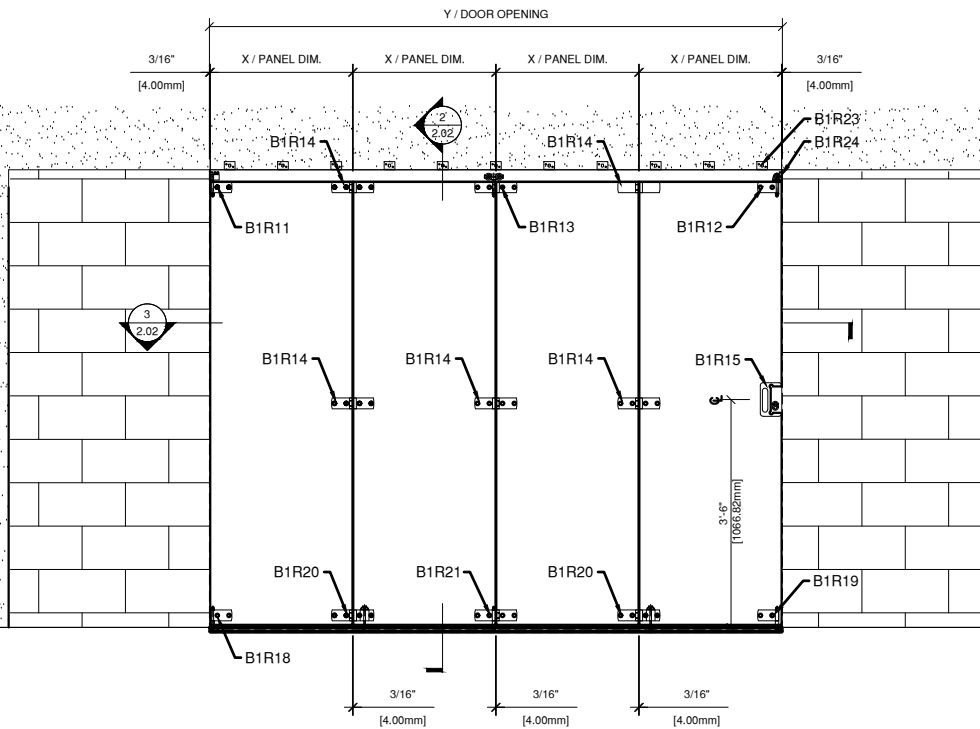
Drawn By: YS
Date: 03.27.19
Scale: AS NOTED
File Name:
SYS0115A - BIRMINGHAM BI-FOLDING SLIDING

Sheet
2.01



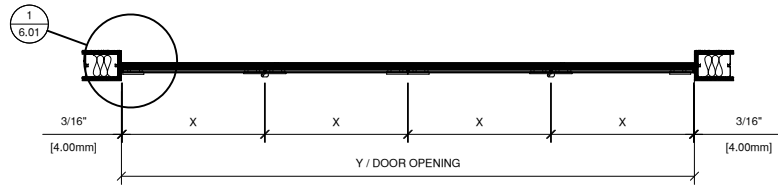
CRL BIRMINGHAM SERIES BI-FOLDING TOP HUNG SLIDING DOOR SYSTEM

Revisions By:

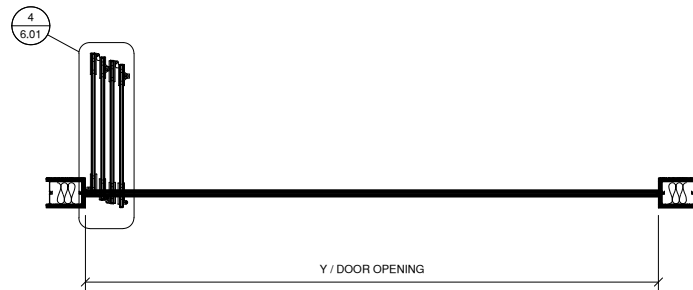


① CRL BIRMINGHAM 4 PANEL BI-FOLDING DOOR KIT (B1R4S)
 ARCH REF: NONE 3/4"=1'-0"

② SECTION VIEW
 ARCH REF: NONE 3/4"=1'-0"



③ PLAN VIEW ~ CLOSED ELEVATION
 ARCH REF: NONE 3/4"=1'-0"



③A PLAN VIEW ~ PARTIALLY OPEN
 ARCH REF: NONE 3/4"=1'-0"

DOOR HEIGHT :

$D.O. = R.O. - 67 \text{ mm}$
 $D.O. = R.O. - 2 \frac{5}{8} \text{ \"}$

DOOR PANEL WIDTH :

$X = \left(\frac{Y - 4 \text{ mm}}{N} \right) - 4 \text{ mm}$
 $X = \left(\frac{Y - 3/16 \text{ \"}}{N} \right) - 3/16 \text{ \"}$

Y = TOTAL WIDTH
 N = NUMBER OF LEAFS
 X = WIDTH GLASS DOOR

IMPORTANT NOTE:

- DIMENSION AND HARDWARE ARE JUST FOR INFORMATION ONLY. DO NOT TAKE ANY MEASUREMENT FROM THIS DRAWING.
- MAXIMUM PANEL WEIGHT OF 110 LBS (50 KG), WITH THE MAXIMUM WIDTH OF 29\" (737 mm) AND MAXIMUM HEIGHT OF 118\" (3000 mm).
- FITTING CAN ACCOMMODATE 3/8\" OR 1/2\" (10 mm OR 12 mm) TEMPERED GLASS.
- OPTIONAL LOCKING HANDLE (B1R15) AND RECEIVER HANDLE (B1R16) ARE AVAILABLE. (ORDERED SEPARATELY)
- FOR OPENINGS TALLER THAN 104\" (2600 mm), ADDITIONAL B1R14 GLASS-TO-GLASS PATCHES MUST BE USED AT PANEL HEIGHT MIDPOINT TO ENSURE SAFE OPERATION OF THE SYSTEM (ORDERED SEPARATELY)

STRUCTURAL DISCLAIMER:

ALL CUSTOMERS WHO IN ANY WAY UTILIZE THIS PRODUCT ARE SOLELY RESPONSIBLE TO CONSULT A STRUCTURAL ENGINEER TO DETERMINE THE SUITABILITY OF THE PRODUCT FOR THE INTENDED USE AND SITE CONDITIONS. ALL INSTALLERS MUST BE QUALIFIED AND HAVE PROFESSIONAL KNOWLEDGE ABOUT COMPLIANCE WITH LOCAL, STATE AND FEDERAL REGULATIONS, SAFETY FACTORS, AND THE APPROPRIATE CHOICE OF FIXING MATERIAL AND PROCEDURES.



Description:
 CRL BIRMINGHAM SERIES
 BI-FOLDING TOP HUNG
 SLIDING DOOR SYSTEM
 FOR 3/8\" OR 1/2\" GLASS

Drawn By: YS

Date: 03.27.19

Scale: AS NOTED

File Name:

SYS0115A - BIRMINGHAM BI-FOLDING SLIDING

Sheet

Revisions By:

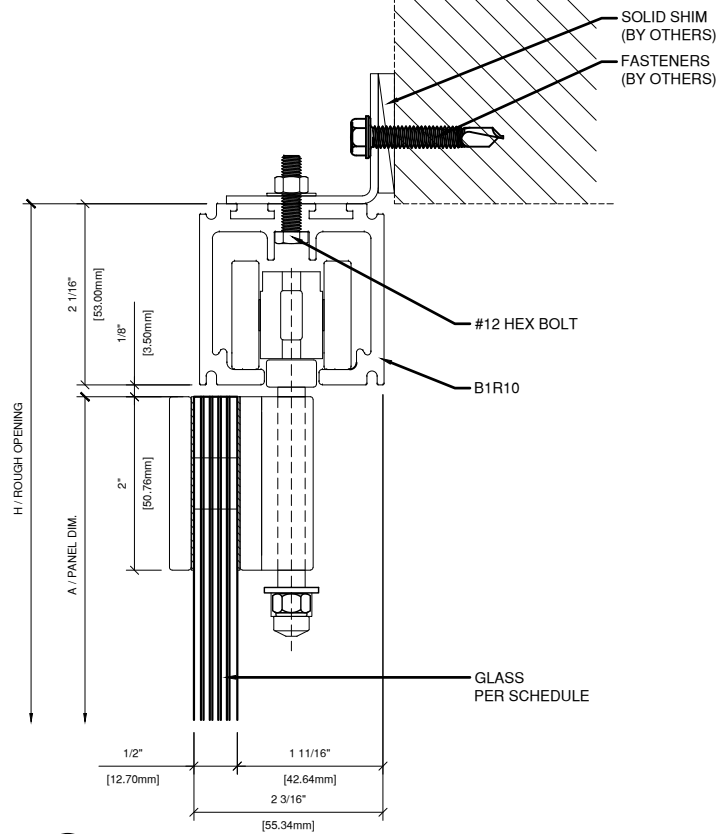


Description:
CRL BIRMINGHAM SERIES
BI-FOLDING TOP HUNG
SLIDING DOOR SYSTEM
FOR 3/8" OR 1/2" GLASS

Drawn By: YS
Date: 03.27.19
Scale: AS NOTED
File Name:
SYS0115A - BIRMINGHAM BIFOLDING SLIDING

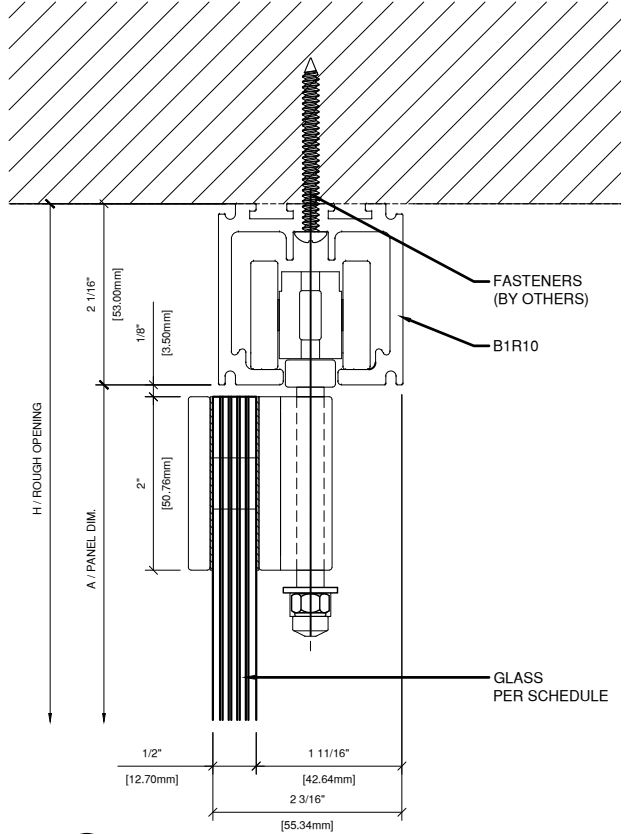
Sheet

5.01



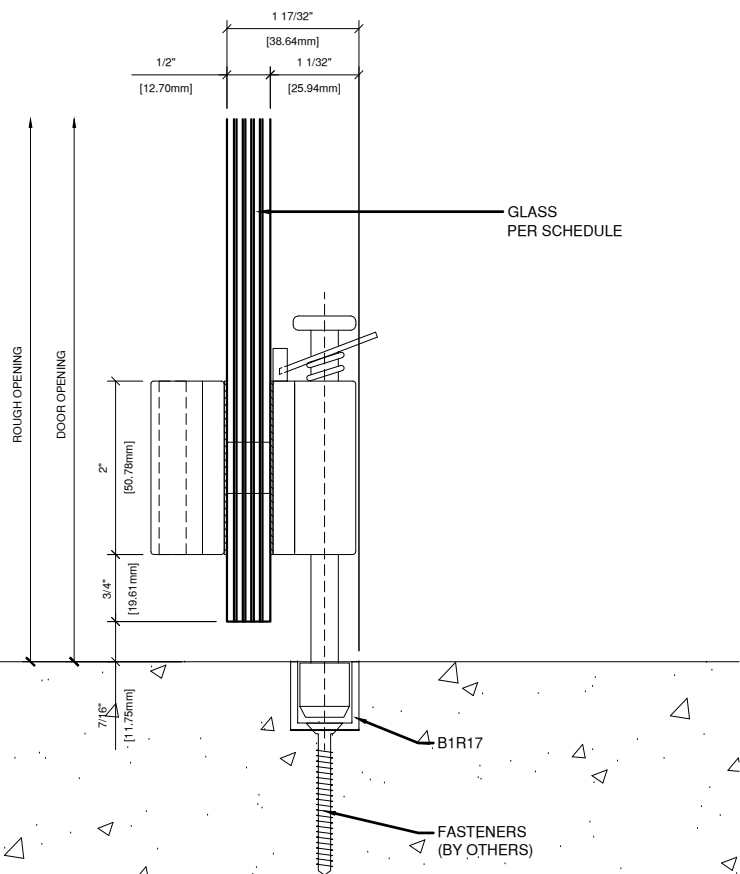
① SECTION DETAIL @ HEAD

ARCH REF: NONE 1'-0"=1'-0"



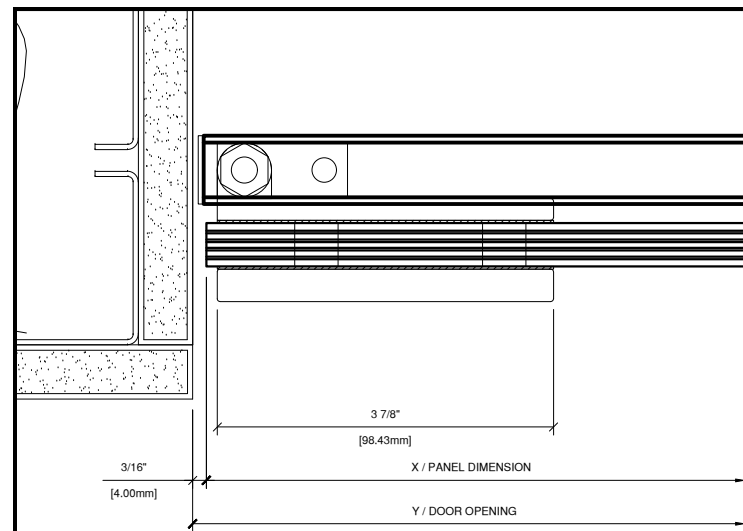
③ SECTION DETAIL @ HEAD (OPTIONAL)

ARCH REF: NONE 1'-0"=1'-0"

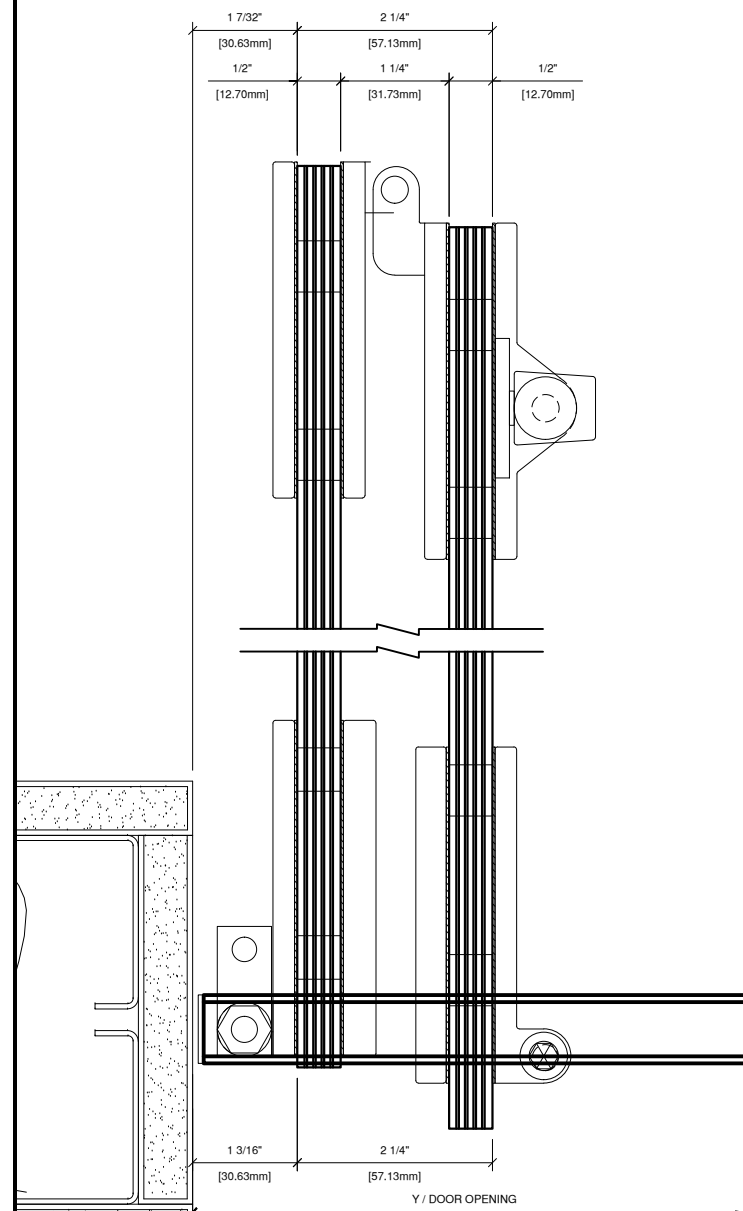


② SECTION DETAIL @ BOTTOM RAIL

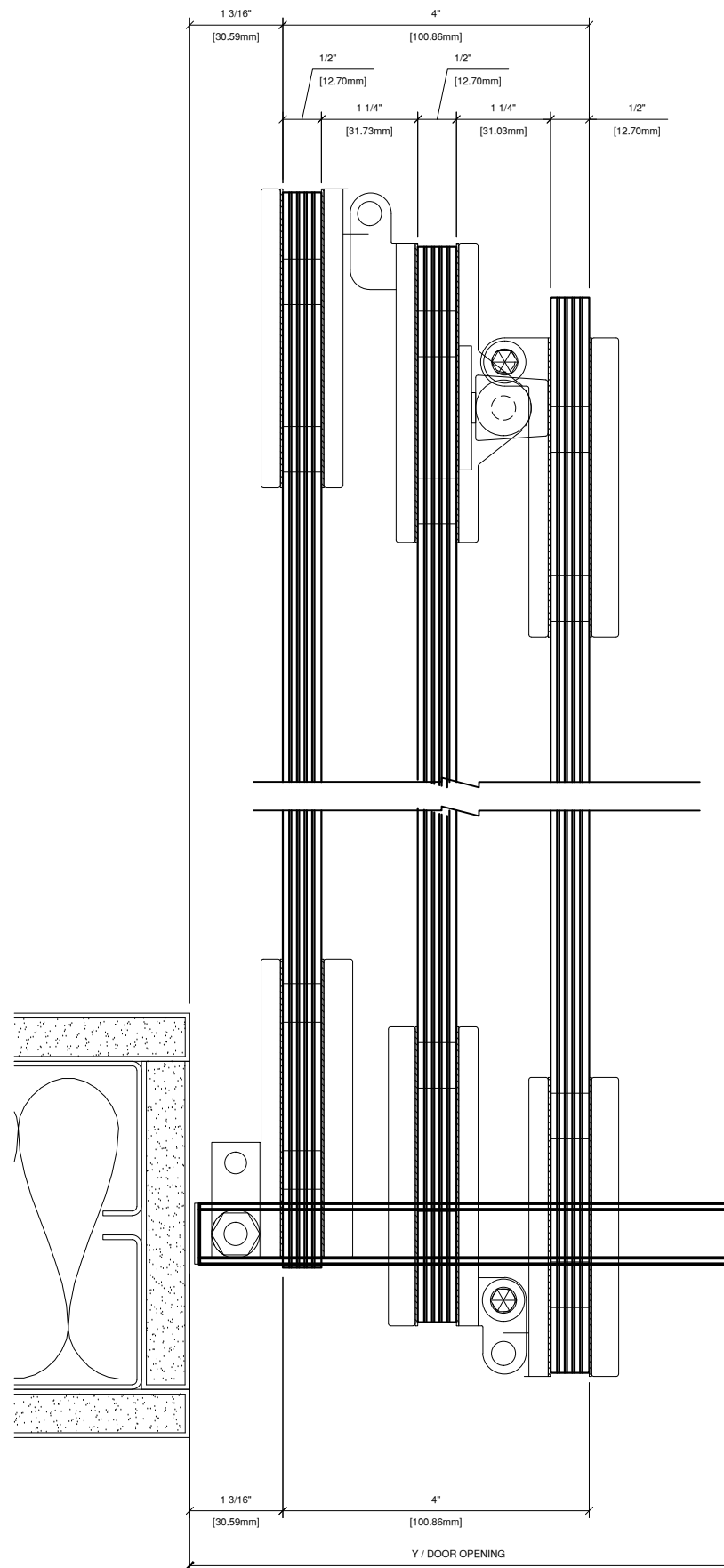
ARCH REF: NONE 1'-0"=1'-0"



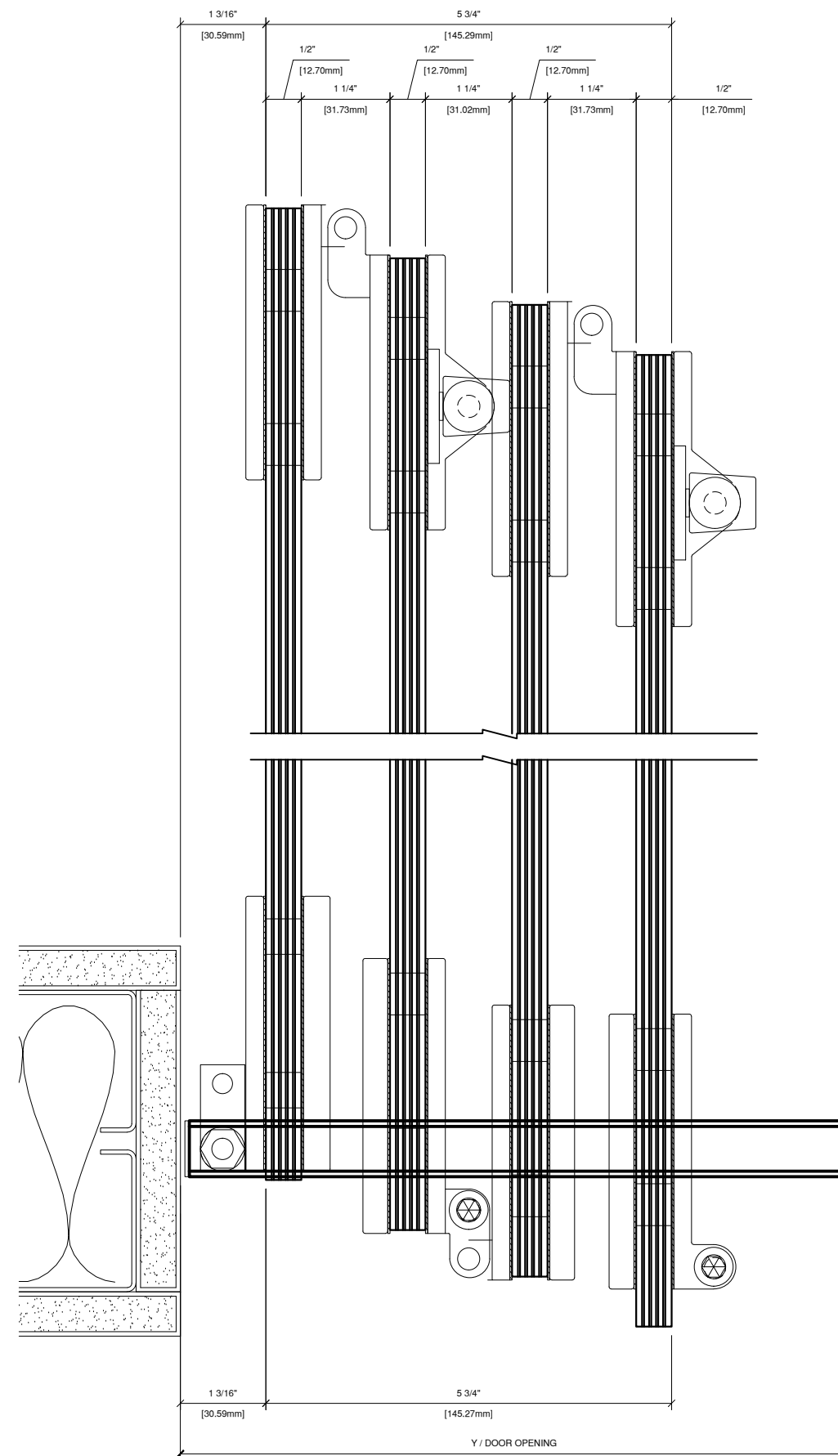
1 SECTION DETAIL @ JAMB
 ARCH REF: NONE 1'-0"=1'-0"



2 SECTION DETAIL @ 2x2 JAMB
 ARCH REF: NONE 1'-0"=1'-0"



3 SECTION DETAIL @ B1R3S JAMB
 ARCH REF: NONE 1'-0"=1'-0"



4 SECTION DETAIL @ B1R4S JAMB
 ARCH REF: NONE 1'-0"=1'-0"

Revisions By:



2508 E. Vernon Avenue, Los Angeles, CA 90058-1897
 PH (800) 421-6144 FX (800) 567-7501 www.crlaluminum.com

Description:
 CRL BIRMINGHAM SERIES
 BI-FOLDING TOP HUNG
 SLIDING DOOR SYSTEM
 FOR 3/8" OR 1/2" GLASS

Drawn By: YS

Date: 03.27.19

Scale: AS NOTED

File Name:

SYS0115A - BIRMINGHAM BIFOLDING SLIDING

Sheet

6.01