

487 Series Glass Partition



As a traditional stick-built, full-frame office partition, the 487 Series presents an adaptable solution for a wide range of interior applications. The system features screw spline and clip joinery of framing members, which allows vertical or horizontal installation of frame extrusions.

Technical Details

- **System type:** Framed glass wall
- **System options:** 10 in bottom door rail (ADA compliant)
- **Frame dimensions:** 1-1/2 in width x 5-11/16 in depth
- **Max system height:** 12 ft
- **Max door height and width:** 8 ft x 3 ft (recommended)
- **Door options:** Pivot door, hinged door, and integrated sliding glass door
- **Glass type:** 1/4 in, 3/8 in, 1/2 in monolithic, and 9/16 in laminated tempered glass
- **Finishes:** Clear anodized, black bronze anodized, and custom finishes available

487 Swing/Slider STC Value

- 9/16 in laminated = STC 35

487 Series Integrated Slider

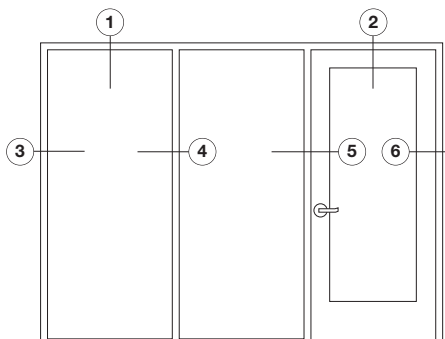
This top-hung sliding system saves valuable floor space over conventional pivoting systems.

Technical Details

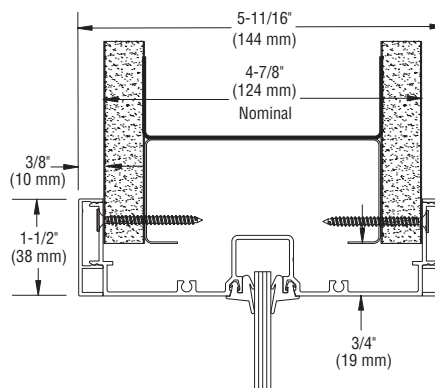
- Single or bi-parting doors, with or without a transom
- 1-1/2" face trim
- Accepts 1/4", 3/8", 1/2", and 9/16" (6, 10, 12, 14 mm) glazing
- Stock frame kits available
- Can accommodate doors weighing up to 200 lbs. (91 kg)
- Optional "softbrake" braking system on all glass doors only



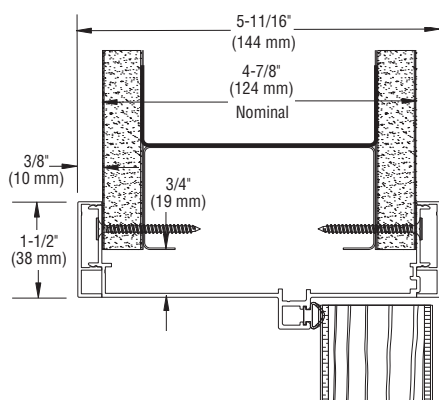
Typical Elevation



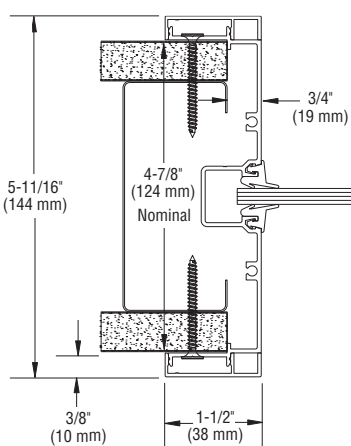
1. Fixed Glazing Header



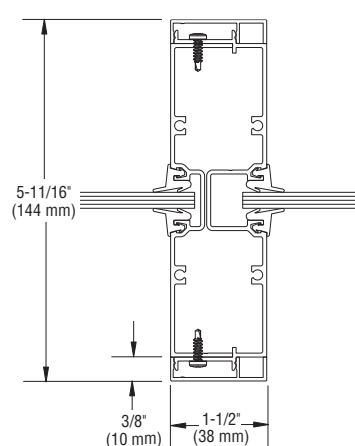
2. Door Header



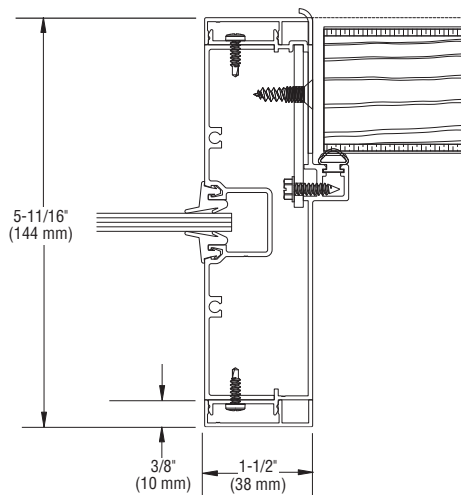
3. Wall Jamb



4. Intermediate Vertical



5. Strike Jamb with Sidelite



6. Hinge Jamb

