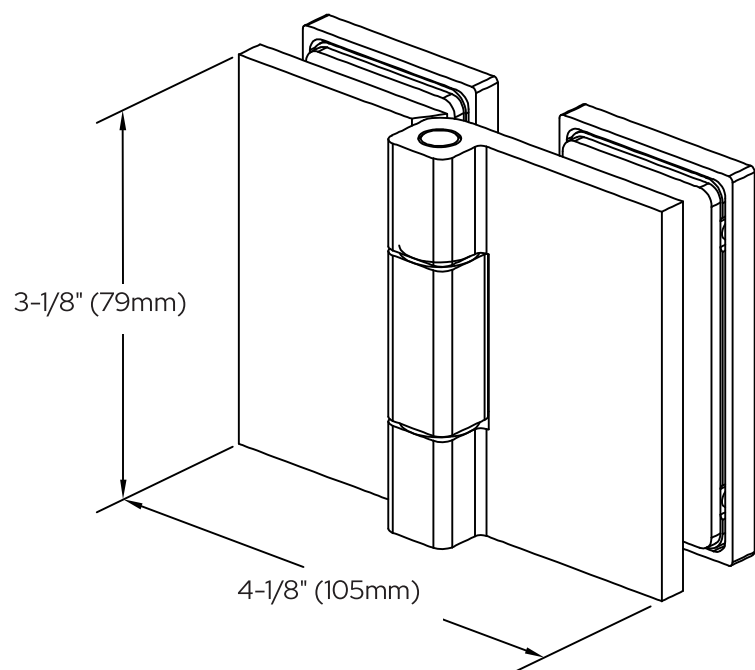


**\* SEE TEMPLATE ON BACK \***

Refer to Dimensions Shown  
to Ensure Accuracy



## COMO

Glass-to-Glass 180° Hinge

CAT. NO. COM180

**\*NOTE:** Do not exceed either maximum weight or width when choosing proper quantity of hinges.

### Important Information:

1). This is a one-direction hinge and is designed for an outswing application only. A door strike is required so the door isn't allowed to swing inward and damage the door glass.

### Specifications:

Glass Sizes:	5/16" (8mm) to 3/8" (10mm) thick tempered safety glass
Construction:	Solid brass
Cutout Required	
Includes:	Gaskets, screws and template

### Maximum Door Capacities

### Two Hinges

Maximum Door Weight:	110 lbs. (50 kg)
Maximum Door Width:	39" (1000mm)

### Use of Gaskets:

For 5/16" (8mm) Glass: Use one thick gasket on each side

For 3/8" (10mm) Glass: Use one thin gasket on each side

### Recommendations:

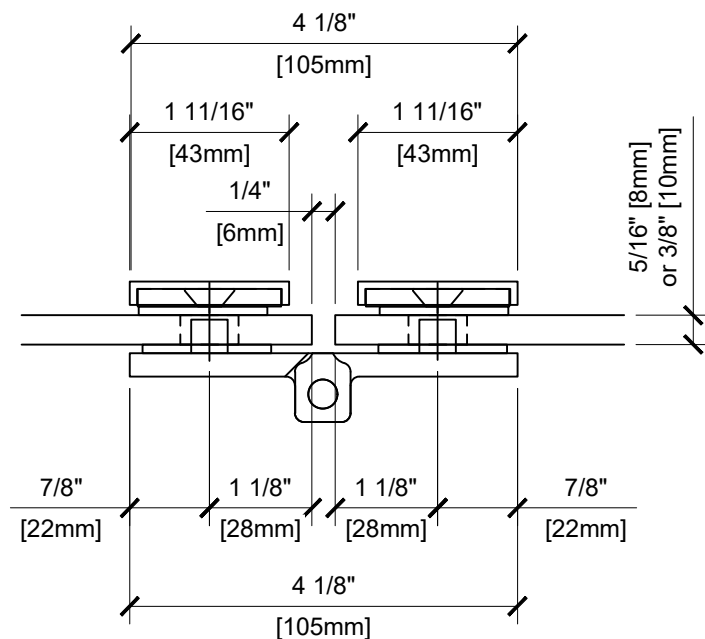
For public safety, we recommend the use of only tempered safety glass. Do not use power tools when installing these hinges.

### Maintenance Guidelines:

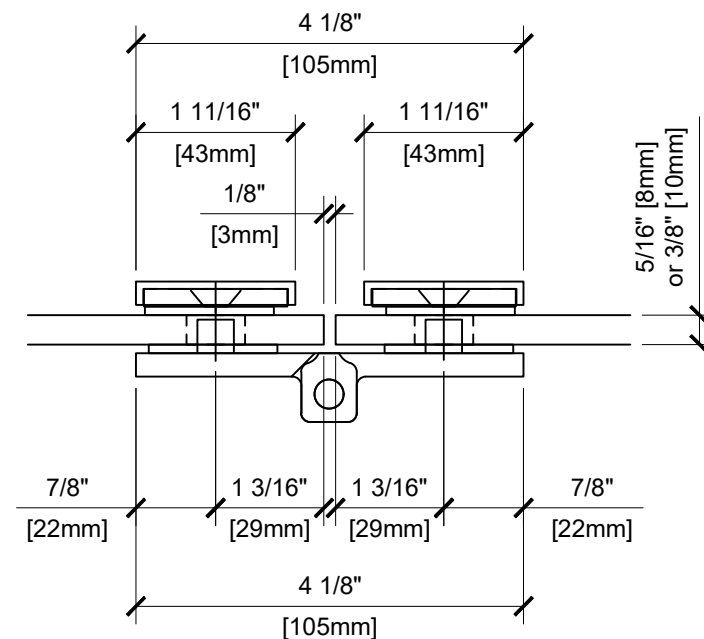
- Never use an abrasive cleaner on the hardware. Many of the components are coated with a clear lacquer that will be irreparably damaged if subjected to harsh, abrasive chemicals. Advise your customer that drying the hardware with a clean, soft towel on a daily basis is the best way to maintain the hardware. If mineral deposits build-up, mix a couple of drops of a mild liquid soap (such as Ivory or a similar product) into a cup of warm water. Using a soft, non-abrasive cloth, clean the hardware. Rinse thoroughly with clean, warm water and dry.

# COMO

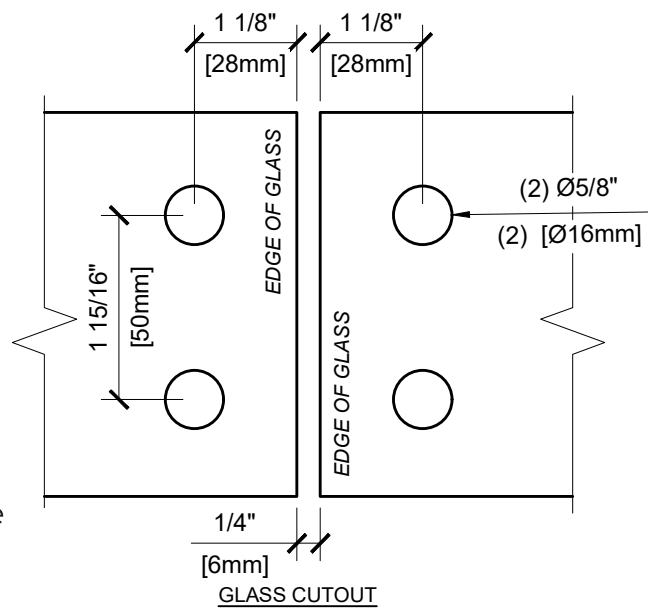
Glass-to-Glass 180° Hinge  
CAT. NO. COM180



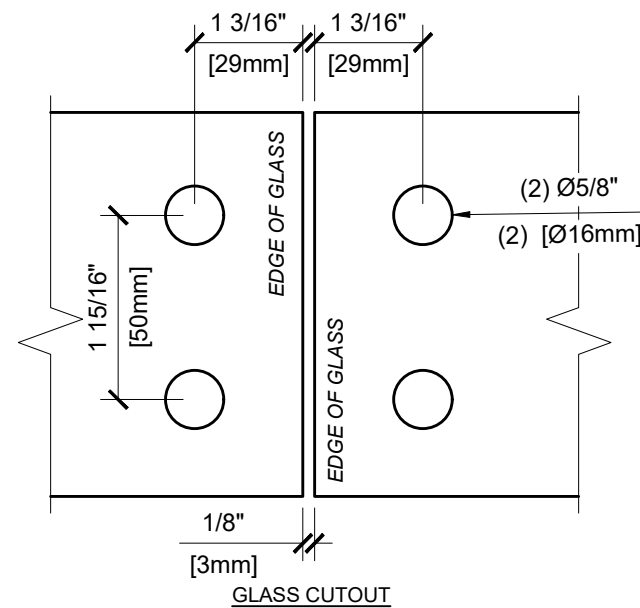
TYP. GLASS CUTOUT



TIGHT CLEARANCE GLASS CUTOUT



## GLASS CUTOUT



### GLASS CUTOUT